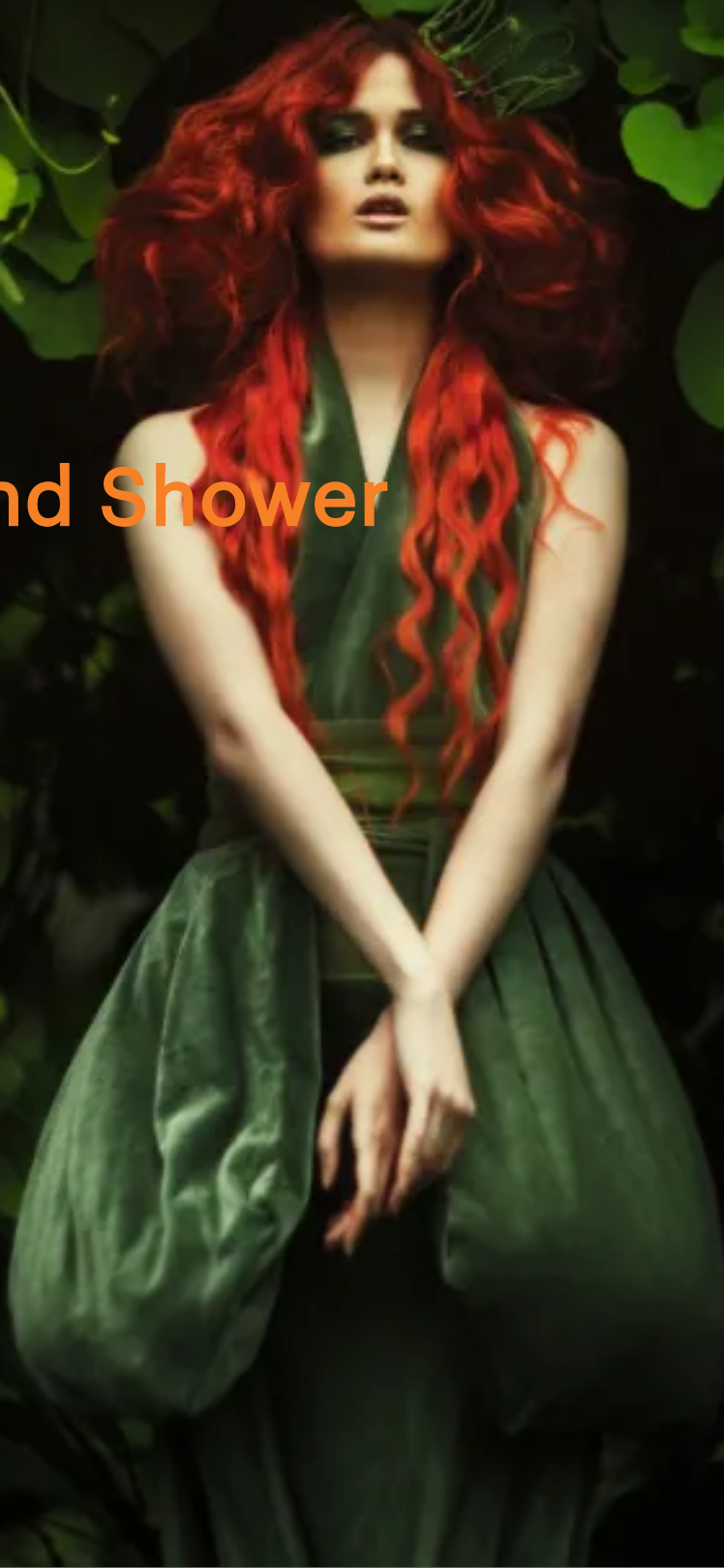


INFINITY GREDIENTS

Inspiring Cosmetics

Bath and Shower



Bath and Shower

The bath and shower market has come a long way from the humble bar of soap.

These days, consumers aren't just washing, they're looking for a whole experience. They expect their daily cleanse to be both gentle and effective, with mild surfactants and pH-balanced formulas that respect the skin's natural barrier while still leaving them feeling fresh and pampered.

But despite all this progress, many liquid toiletries still rely on fairly basic surfactant systems, typically a combination of SLES and Betaine, often thickened with salt.

Sure, this tried-and-true combo delivers reliable foaming and keeps costs down, but it doesn't always offer the skin-loving benefits or sensory excitement that today's consumers are craving. In a crowded market, that can make it hard for products to truly stand out. To develop a bath or shower product that feels special and earns a spot in the customer's daily ritual, formulators are increasingly reaching for more innovative tools.

Think natural surfactants, gentle moisturising foaming agents, surfactant combinations that offer denser more stable foams and skin conditioners that hydrate, soften, and support healthier skin with every wash. Add a carefully crafted fragrance, a pop of color, or a fun textural tip-in, and suddenly you've transformed a basic product into a sensorial treat that delights both skin and senses.

After all, who says cleansing can't be an experience worth looking forward to?

Take a look at our catalogue below.

Alder Buckthorn Dye Extract

(INCI: Frangula alnus bark extract, Maltodextrin)

Orange soluble dye plant extract recommended for skin care and Personal Care applications.

Recommended usage level: Aqueous and transparent formulations: 0.1 - 0.5%; Emulsions: 1 - 3%

Annato Dye Extract

(INCI: Maltodextrin, Annatto / CI 75120 / E160b, Potassium hydroxide)

Orange soluble dye plant extract recommended for skin care and Personal Care applications.

Recommended usage level: Aqueous and transparent formulations: 0.1 - 0.5%; Emulsions: 1 - 3%

Avocado Powder

(INCI: Persea Gratissima (Avocado) Fruit Powder)

The avocado has been a product of excellence at Laboratoires Expanscience for over 30 years. By choosing to work with local partners through our South African and Latin American avocado suppliers, Laboratoires Expanscience are taking concrete steps to fight deforestation, encourage best cultural practices based on tradition and contribute to strengthening the producer's economy and society.

Avocado powder is produced by grinding the whole dehydrated, delipidated fruit (stone, pulp and skin). The smooth avocado particles obtained (average granulometry: 100-500µm) act gently rather than abrasively on the skin surface.

An alternative to plastic micro-beads, plant scrubs remove dead cells and impurities from the skin mechanically and gently. It accelerates skin renewal and brightens the complexion. Plant scrubs soften and unify the epidermis and facilitate the penetration skin care products.

Recommended usage level: 0 - 100%

Calybiota[®] Bio

(INCI: Glycerin, Water, Bombax Costatum Flower Extract)

Calybiota[®] Bio is an extract rich in polysaccharides of red Kapokier calyces, a tree sourced in Africa. Calybiota[®] Bio is COSMOS certified by Ecocert and is particularly recommended for personal care and intimate hygiene products.

A clinical study has demonstrated its protective role of the vaginal flora. This study revealed a prebiotic effect in this flora, showing a reduction in inflammation and feelings of discomfort, hydration of the intimate area and an improvement in sexual comfort.

Calybiota[®] Bio is also recommended for acne-prone, atopic/ eczematous or hypersensitive skin, as well as for deodorant formulas, limiting unpleasant odours. This active ingredient protects and maintains the balance of the skin microbiota.

Recommended usage level: 1 - 3%

Babaçu oil

(INCI: Orbignya Oleifera Seed Oil)

Babaçu oil has emulsifying properties making it ideal for the preparation of O/W type emulsions. As an active ingredient, it can be used in skin and hair products for moisturisation. In soap it can be used to replace fats of animal and vegetable origin and as a raw material to obtain surfactants.

Babaçu almond is used in baby products in the form of liquid talc. When crushed, the seed produces a powder, known as babaçu powder, which absorbs moisture and helps protect the baby's skin, especially in the region of direct contact with the nappy.

Recommended usage level: 0.5 - 5% creams and lotions; 0.5 - 8% bar soaps and 0.1 - 1% in hair products

Copaiba Oil

(INCI: Copaifera species resin oils)

Copaiba oil has been used by natives of the Amazon in folk remedies long before they were known in the 21st century for relieving pain, stress or serving as an antimicrobial solution.

The rising use of cannabinoids is closely linked with therapeutical activities, besides the anti-inflammatory property. The most highlighted cannabinoids are cannabidiol (CBD), tetrahydrocannabinol (THC), and β -caryophyllene (BCP). These compounds are present in different vegetable sources such as the cannabis plant and Copaiba oil.

Copaiba is one of the most interesting natural ingredients to explore the experience delivered by this kind of product.

Recommended usage level: 1 - 10%

Coreopsis Dye Extract

(INCI: Coreopsis tinctoria flower/leaf/stem extract, Maltodextrin)

Yellow soluble dye plant extract recommended for skin care and Personal Care applications.

Recommended usage level: Aqueous and transparent formulations: 0.1 - 0.5%; Emulsions: 1 - 3%

CYTOFRUIT® Grapefruit

(INCI: Citrus Grandis Fruit Extract)

CYTOFRUIT® Grapefruit is Cosmos certified and circular economy fruit water from the production of Grapefruit juice. The fruit is harvested in the Mediterranean and is rich in bioflavonoids.

Grapefruit provides detoxifying and antioxidant properties, whilst improving cell energy levels for anti-ageing benefits. Ideal for skin toning, anti-cellulite, detoxifying and oily skin.

Thanks to the presence of oligo-elements, this upcycled Grapefruit water could sustain skin biological benefits through an improvement of cell vitality, a protection against external agents or a physiological improvement.

Recommended usage level: 1 - 100%

CYTOFRUIT® Green Mandarin

(INCI: Citrus Nobilis Fruit Extract)

CYTOFRUIT® Green Mandarin is Cosmos certified and a circular economy fruit water from the production of Green Mandarin juice.

The fruits are harvested in the Mediterranean and show precious antiseptic characteristics as well as an anti-stress, making it ideal for use in relaxing, anti-stress, uplifting, refreshing, anti-depressant, soothing and lenitive applications.

Thanks to the presence of oligo-elements, this upcycled Green Mandarin water could sustain skin biological benefits through an improvement of cell vitality, a protection against external agents or a physiological improvement.

Recommended usage level: 1 - 100%

CYTOFRUIT® Kiwi

(INCI: Actinidia Chinensis Fruit Extract)

CYTOFRUIT® Kiwi is Cosmos certified and circular economy fruit water from the production of Kiwi juice.

The fruits are harvested in the Mediterranean and are suitable for all skin types due to Kiwi's versatile protective properties. Suitable for energising skin and stimulating the skin's defence system.

Thanks to the presence of oligo-elements, this upcycled Kiwi water could sustain skin biological benefits through an improvement of cell vitality, a protection against external agents or a physiological improvement.

Recommended usage level: 1 - 100%

CYTOFRUIT® Lemon

(INCI: Citrus Limon Fruit Extract)

CYTOFRUIT® Lemon is a Cosmos certified and circular economy fruit water from the production of Lemon Juice. The Lemons, harvested in the Mediterranean, are rich in Vitamin C, Potassium and Citric Acid. Lemon fruits cleanse and exfoliate dull and oily skins, whilst refreshing and quenching the skin's thirst to provide a radiant glow.

In addition, Lemon fruit also offers natural anti-bacterial and astringent properties.

Thanks to the presence of oligo-elements, this upcycled Lemon water could sustain skin biological benefits through an improvement of cell vitality, a protection against external agents or a physiological improvement.

Recommended usage level: 1 - 100%

CYTOFRUIT® Red Orange

(INCI: Citrus Sinensis (Orange) Fruit Extract)

CYTOFRUIT® Red Orange is a Cosmos certified, circular economy fruit water from the production of Red Orange juice. The fruits are harvested in the Mediterranean and are rich in Vitamin C.

Red Orange stimulates the skin with a cocktail of nutritive components and provides a toning effect.

Thanks to the presence of oligoelements, this upcycled Red Orange water could sustain skin biological benefits through an improvement of cell vitality, a protection against external agents or a physiological improvement.

Recommended usage level: 1 - 100%

CYTOFRUIT® Pomegranate

(INCI: Punica Granatum Fruit Extract, Potassium Sorbate)

CYTOFRUIT® Pomegranate is Cosmos certified, and a circular economy fruit water from the production of Pomegranate juice.

The fruits are harvested in the Mediterranean and are rich in Vitamin C, E and K.

Thanks to the presence of oligoelements, this upcycled Pomegranate water could sustain skin biological benefits through an improvement of cell vitality, a protection against external agents or a physiological improvement.

Recommended usage level: 1 – 100%

CYTOFRUIT® Sweet Orange

(INCI: Citrus Aurantium Dulcis Fruit Extract)

CYTOFRUIT® Sweet Orange is a Cosmos certified and circular economy fruit water from the production of Sweet Orange juice. The fruits are harvested in the Mediterranean and are rich in Vitamin C.

Sweet Orange fruits gently awaken the skin with a cocktail of vitamins, whilst providing a re-energising fresh, fruity zest for a reborn skin.

Thanks to the presence of oligoelements, this upcycled Sweet Orange water could sustain skin biological benefits through an improvement of cell vitality, a protection against external agents or a physiological improvement.

Recommended usage level: 1 - 100%

CYTOFRUIT® Bergamot

(INCI: Citrus Aurantium Bergamia Fruit Extract)

CYTOFRUIT® Bergamot is a Cosmos certified and circular economy fruit water from the production of Bergamot juice.

fruits are harvested in the Mediterranean.

Bergamot offers calming and antiseptic properties for irritated skin as well as cooling and refreshing benefits. Ideal for use in cleansers and toners to achieve clear and flawless skin.

Thanks to the presence of oligo-elements, this upcycled Bergamot water could sustain skin biological benefits through an improvement of cell vitality, a protection against external agents or a physiological improvement.

Recommended usage level: 1 - 100%

DRENALIP™

(INCI: Propanediol, Aqua, Ruscus Aculeatus Root Extract, Citrus Limon (Lemon) Peel Extract, Solidago Virgaurea (Goldenrod) Extract, Astragalus Membranaceus Root Extract, Sodium Benzoate, Potassium Sorbate)

DRENALIP™ is a new standardised complex containing vegetal origin active ingredients designed to prevent and reduce the different factors responsible for cellulite.

The components contained in DRENALIP™ perform a combined action that leads to a reduction of adipose tissue, a decrease in edema and an improvement in blood flow.

Daily use of cosmetic products that have an effect on fatty tissue, preventing the formation of new fat cells and improving blood circulation, provides a preventive effect.

Therefore, DRENALIP™ can be incorporated in daily body formulations (milks, creams and gels) and in hygiene formulations (bath gels).

Recommended usage level: 2 - 3%

CYTOFRUIT® Clementine

(INCI: Citrus Clementina Fruit Extract)

CYTOFRUIT® Clementine is a Cosmos certified and circular economy fruit water from the production of Clementine juice. The fruits are harvested in Mediterranean and are rich in Potassium, Calcium, beta-Carotene and Vitamin C.

Clementine offers refreshing, purifying and free radical scavenging properties.

Thanks to the presence of oligo-elements, this upcycled Clementine water could sustain skin biological benefits through an improvement of cell vitality, a protection against external agents or a physiological improvement.

Recommended usage level: 1 - 100%

Dyer's Sorghum Dye Extract

(INCI: Sorghum bicolor leaf/stem extract, Maltodextrin)

Pink/ Red soluble dye plant extract recommended for skin care and Personal Care applications.

Recommended usage level: Aqueous and transparent formulations: 0.1 - 0.5%; Emulsions: 1 - 3%

Eco Scrub Murumuru

(INCI: *Astrocaryum murumuru* seed powder)

Eco Scrub Murumuru represents a natural and sustainable alternative to the use of exfoliating synthetic polymers. The product has natural colouration without the addition of synthetic additives and brings all the benefits of the fruit to the exfoliation in the final formulation.

It is rich in lauric and myristic fatty acids, in addition to vitamin E constituent tocopherols. It can be used in gels for face and body, as well as liquid soaps, creams and bath lotions.

Recommended usage level: 0.1 - 1.5% liquid and bar soaps; 0.1 - 1% creams, lotions and gels

Evicare[®] aquatex 14

(INCI: Xanthan Gum)

Evicare[®] aquatex 14 is a Cosmos certified, non-GMO, transparent and vegan gelling agent. Electrolyte tolerant it is compatible with up to 40% alcohol.

Incredibly fast solubility and excellent transparency due to its granulated form.

Evicare[®] aquatex 14 offers a higher viscosity yield compared to Evicare[®] aquatex 80.

Recommended usage level: 0.1 – 1.0 %

ESSACHEM[®] BW

(INCI: Behenyl Olivat)

A natural based ester complex designed to offer thickening properties without compromising the spread of the formulation on the skin and hair. ESSACHEM[®] BW will thicken the oil phase of emulsions, lip applications and oil enriched cleansers to aid stabilisation whilst delivering an exceptional skin feel.

This natural complex will enhance the moisturisation properties and post rinse after feel from oil enriched body wash formulations without impacting the cleansing and foaming properties.

Recommended usage level: 2 - 8%

Evicare[®] aquatex 80

(INCI: Xanthan Gum)

Evicare[®] aquatex 80 is a Cosmos certified, non-GMO, transparent and vegan gelling agent. Electrolyte tolerant it is compatible with up to 40% alcohol.

Fast solubility and excellent transparency. Highly compatible with surfactants and significantly reduced stringiness. Evicare[®] aquatex 14 offers a higher viscosity yield compared to Evicare[®] aquatex 80.

Recommended usage level: 0.1 – 1.0 %

Evicare® complex 1

(INCI: Phytic Acid, Aqua)

Evicare® complex 1 is a natural substitute for EDTA. With a strong complexing function this readily biodegradable raw material traps undesired metal ions that accelerate oxidation and helps to protect sensitive materials in cosmetic products. By removing Magnesium and Calcium it makes water softer and helps to boost foam in shampoos and cleansing products.

Evicare® complex 1 is water soluble and can simply be added to the water phase. In emulsions it supports antioxidants by removing metal ions that catalyse oxidation processes. In surfactant-based products it helps to increase foam volume.

Recommended usage level: 0.1 - 0.3%

Evicare® polysolve 10L

(INCI: Polyglyceryl-10 Laurate, Aqua, Citric Acid)

Evicare® polysolve 10L is a natural PEG-free solubiliser, co-emulsifier and co-surfactant. It can be used in Body Washes, Shampoos, Micellar Waters, Tonics and Lotions. The active ingredient is Polyglyceryl-10 Laurate, which is a non-ionic monoester of 10 glycerin units and lauric acid.

Recommended usage level: Co-Emulsifier: 1.5 – 3%; Co-Surfactant: 1 – 30% depending on formulation type

Evicare® complex 12

(INCI: Sodium Phytate)

Evicare® complex 12 is a natural substitute for EDTA. With a strong complexing function this readily biodegradable raw material traps undesired metal ions that accelerate oxidation and helps to protect sensitive materials in cosmetic products. By removing Magnesium and Calcium it makes water softer and helps to boost foam in shampoos and cleansing products. The pre-neutralized Evicare® complex 12 is the purest form of this natural chelator. Readily water soluble it can simply be added to the water phase. In emulsions it supports antioxidants by removing metal ions that catalyse oxidation processes. In surfactant-based products it helps to increase foam volume.

Recommended usage level: 0.1 - 0.3%

Evicare® polysolve 10L 100

(INCI: Polyglyceryl-10 Laurate)

Evicare® polysolve 10L 100 is a natural PEG-free solubiliser, co-emulsifier and co-surfactant based on vegetable glycerin. It can be used in Body Washes, Shampoos, Micellar Waters, Tonics and Lotions. The active ingredient is Polyglyceryl-10 Laurate, which is a non-ionic monoester of 10 glycerin units and lauric acid.

Recommended usage level: Co-Emulsifier: 1.5 – 3%; Co-Surfactant: 1 – 30% depending on formulation type

Evicare[®] polysolve 4C

(INCI: Polyglyceryl-4 Caprate)

Evicare[®] polysolve 4C can be used as a natural solubiliser and will create a milky to translucent solution. Especially suitable for very polar emollients. Due to its non-irritant properties it can also be used as a co-surfactant for mild rinse-off formulations, such as micellar waters, liquid soaps as well as face and body washes.

It can also be used as a co-emulsifier as it has some self-emulsifying properties, making it ideal for self-emulsifying bath oils or cleansing oils. With its refatting characteristics Evicare[®] polysolve 4C will improve the sensory quality of every formulation and will leave the skin nourished without leaving a sticky skin feel.

Recommended usage level: 1-20%

Evicare[®] silk

(INCI: PCA Glyceryl Oleate)

Evicare[®] silk is a fully natural hair conditioning agent. Due to its molecular structure it has a natural cationic charge that helps to create a connection to human hair. The natural Oleic Acid in the molecule is identical to the protection provided in the natural state of the hair and therefore restores the protection that is lost by washing the hair and stress caused by UV, Oxygen etc. It is compatible with all common surfactants and can be used in shampoos, hair conditioners and masks. The conditioning effect on the skin can be used in shower gels, skin care and lip stick products too.

Recommended usage level: 0.5 - 2.0%

Evicare[®] polysolve 4C 90

(INCI: Polyglyceryl-4 Caprate, Aqua)

Evicare[®] polysolve 4C 90 can be used as a natural solubiliser and will create a milky to translucent solution. Especially suitable for very polar emollients.

Due to its non-irritant properties it can also be used as a co-surfactant for mild rinse-off formulations, such as micellar waters, liquid soaps as well as face and body washes. It can also be used as a co-emulsifier as it has some self-emulsifying properties, making it ideal for self-emulsifying bath oils or cleansing oils.

With its refatting characteristics Evicare[®] polysolve 4C 90 will improve the sensory quality of every formulation and will leave the skin nourished without leaving a sticky skin feel.

Recommended usage level: 1-20%

Evicide[®] anise eco

(INCI: p-Anisic Acid)

Evicide[®] anise eco is a well-known 100% natural fungicide, especially designed for natural cosmetics. When used in combination with the right anti-bacterial agent such as, Evicide[®] levulinate it is easily possible to replace existing traditional preservatives. Evicide[®] anise eco works perfectly and easily as a strong fungicidal component for the full protection of surfactant-based products such as, shampoos and shower gels. In emulsions Evicide[®] anise eco is used globally as well, in some cases the use of a boosting agent such as, Evicide[®] G 5 eco or Evicide[®] GMCY is recommended.

Recommended usage level: 0.1 - 0.3%

Evicide® propanediol

(INCI: Propanediol)

Evicide® propanediol is a non-GMO, natural, COSMOS certified alternative to petroleum-based glycols.

This high purity (min. 99.8%) skin-friendly ingredient can be used as a humectant, preservative booster, emollient and carrier solvent.

Suitable for all personal care products including fragrances, toothpastes, mouthwashes, deodorants, hair, skin and suncare.

Evicide® propanediol enhances moisturisation and skin feel.

Recommended usage level: 1 – 40%

EXFO-OLIVE BODY

(INCI: Olea Europaea (Olive) Seed Powder)

EXFO-OLIVE BODY is produced from the pits of olive fruits (*Olea europae*), which are milled to obtain two cosmetic active compounds: one with particle size 200 µm and the other with particle size 500 µm.

It is a natural and physical exfoliant using upcycled olive stones with granules specifically sized for the body. It removes dead surface cells through a mechanical action that improves the texture of the skin, the natural regeneration of the epidermis and the penetration of cosmetic active ingredients.

Recommended usage level: 5-10%

FLORALG WATER PF™

(INCI: Palmaria Palmata Extract, Pentylene Glycol)

FLORALG WATER PF™ is a biological algal water. It results from the slow and progressive drying process of fresh and organic red seaweed *Palmaria Palmata*. It is upcycled and can be used in formulation to replace water and increase the naturalness and organic rate of the cosmetic formula. Recommended usage level: 5 - 100%

Recommended usage level: 5-100%

EXFO-BAMBOO BODY

(INCI: Bambusa Arundinacea Stem Powder)

Physical exfoliant using bamboo with granules specifically sized for the body. Removes dead surface cells through a mechanical action that improves the texture of the skin, the natural regeneration of the epidermis and the penetration of cosmetic active ingredients.

Recommended usage level: 5 - 10%

EXFO-OLIVE FACE

(INCI: Olea Europaea (Olive) Seed Powder)

EXFO-OLIVE FACE is produced from the pits of olive fruits (*Olea europae*), which are milled to obtain two cosmetic active compounds: one with particle size 200 µm and the other with particle size 500 µm.

It is a natural and physical exfoliant using upcycled olive stones with granules specifically sized for the face. It removes dead surface cells through a mechanical action that improves the texture of the skin, the natural regeneration of the epidermis and the penetration of cosmetic active ingredients.

Recommended usage level: 5 - 10%

FOAMIN'TEA

(INCI: Camellia oleifera seed extract)

FOAMIN'TEA is a 100% natural and upcycled plant powder with surfactant assets and is a by-product of the tea seeds oil extraction. Thanks to its properties, FOAMIN'TEA can replace your usual surfactant to create a generous foaming effect, with cleaning and antimicrobial actions. This anionic surfactant is ideal for use in a variety of applications including: dry cleansers, micellar waters, shower gels, shampoos, cleaning pastes and toothpastes.

Recommended usage level: TBC

FUCUS EXTRACT H.GL. - M.S

(INCI: Glycerin, Aqua, Fucus Vesiculosus Extract, Sodium Benzoate, Potassium Sorbate)

FUCUS EXTRACT H.GL. - M.S is an extract in Glycerin/ water of the algae "Fucus vesiculosus L."

It contains mainly alginic acid (alginate), which accounts for almost 40% total weight and can be found as calcium, magnesium or sodium salts. It also contains soluble glucosans and carotenoids. Fucus Extract is recommended for products with moisturising, filmogenic, soothing and anti-irritant actions.

Fucus Extract may also be used at up to 10% of the glycolic extract in "slimming" products (both and shower gel, cream) and body massage cream.

Recommended usage level: 0.5 - 5%

Genipa Dye Extract

(INCI: Genipa americana fruit extract, Maltodextrin, Potassium Sorbate)

Blue soluble dye plant extract recommended for skin care and Personal Care applications.

Recommended usage level: Aqueous and transparent formulations: 0.1 - 0.5%; Emulsions: 1 - 3%

Green CAPB-B

(INCI: Cocamidopropyl betaine)

The Green CAPB-B is obtained by the crude babaçu oil. This oil is rich in lauric, myristic and oleic fatty acids. This allows the actives products presents in the formulation to be better absorbed by the hair, enhancing its effects. In addition, the oil is known for its emollient properties and for its lightness in the hair fiber, being absorbed quickly without affecting its movement or leaving them oily.

The Green CAPB-B has excellent dermal compatibility and associated with anionic surfactants, allow a synergistic reduction of irritability to the eyes and skin, brings a soft and creamy foam, besides that, it is naturally more viscous. Can be used in clear and pearly shampoos formulations, formulations for kids, shower gel, shower foam, liquid soaps.

Recommended usage level: 1 - 5% hair care and 1 - 8% skin care.

GELLIN-K

(INCI: Glucomannan)

GELLIN-K is a gelling agent obtained by extracting polysaccharides from konjac's root. It provides colourless gels with high viscosity, leaving a protective film and fresh feeling on the skin. It can be used in either hot or cold processes and is the perfect natural alternative to synthetic polymers. Ideal to formulate shower gels, shampoos, slimming gels, gel scrub, freshness gel mask.

Recommended usage level: 0.1-1.5%

Golden Rod Dye Extract

(INCI: Solidago virgaurea extract, Maltodextrin)

Yellow soluble dye plant extract recommended for skin care and Personal Care applications.

Recommended usage level: Aqueous and transparent formulations: 0.1 - 0.5%; Emulsions: 1 - 3%

Green Cocoamphoacetate B

(INCI: Sodium Babassuamphoacetate)

Green Cocoamphoacetate B (from Babaçu oil) is a mild amphoteric vegetal surfactant (35 - 40% active) that is Cosmos certified. It is a multi-functional ingredient that can be used in a variety of personal and hair care applications as well as baby/ kids care.

Rich in lauric, myristic and oleic fatty acids, its benefits of application to the skin and hair are superior to the conventional product of the market.

Recommended usage level: 3%

HYDRAFENCE GNNN

(INCI: Aqua, Glycerin, Amylopectin, Lithothamnion Calcareum Extract, Pentylene Glycol, Lactic Acid, Levulinic Acid, Glyceryl Caprylate, Xanthan Gum)

HYDRAFENCE™ increases skin cohesion from the inside and protects from the outside. It acts from the inside by activating the skin's natural hydration and protection mechanisms, and it reinforces the barrier function from the outside by stimulating lipid synthesis in the epidermis, especially the synthesis of ceramides, which are crucial for maintaining the skin barrier.

HYDRAFENCE™ provides immediate relief for dry skin while ensuring long-lasting hydration for up to five days after the last treatment. The skin barrier is enhanced for more protected, healthier and brighter skin.

Recommended usage level: 3%

Infinity Ingredients Elements®

(INCI: Various)

Range of oils and butters.

Recommended usage level: Various

HYDROMANIL™ H.GL. - M.S

(INCI: Aqua, Glycerin, Hydrolyzed Caesalpinia Spinosa Gum, Caesalpinia Spinosa Gum, Sodium Benzoate, Potassium Sorbate)

Provital's iconic moisturiser, now with an additional antibacterial protective effect.

Exclusive 3D Matrix technology for immediate and long-lasting hydration, even after rinsing/cleansing. Provides film-forming effect that prevents transepidermal water loss, desquamation and cracking. Inhibits the formation of bacterial biofilm.

Recommended usage level: 2-10%

Kahai Oil

(INCI: Caryodendron orinocense nut oil)

100% natural anti-ageing oil, extracted by cold pressing the nuts of the Cacay tree. It has a high penetration capability, a dry skin feel and a mild nutty scent, which fades quickly.

Its high content of natural Vitamin E, F and Retinol nourishes, softens and repairs damaged skin making it an ideal choice for scar treatments, tattoo care, stretch marks and aftershave creams.

Kahai Oil revitalises the skin's radiance, reduces fine lines and wrinkles, minimises dark spots and provides long lasting hydration. Kahai Oil contains 50% more Vitamin E and twice the amount of Linoleic Acid than Argan oil and it has 3 times more Retinol than Rose Hip Oil. When used on nails it strengthens brittle nails and relieves nail psoriasis. On hair it provides thermal protection, repairs split ends, increases gloss and reduces frizz at high humidity, outperforming Argan oil (tested at 5%).

Recommended usage level: Various

Lucerne's Chlorophyll Dye Extract

(INCI: E141(ii) / CI 75810)

Green soluble dye plant extract recommended for skin care and Personal Care applications.

Recommended usage level: Aqueous and transparent formulations: 0.1 - 0.5%; Emulsions: 1 - 3%

Madder Rich Dye Extract

(INCI: Rubia tinctorum root extract, Maltodextrin)

Orange soluble dye plant extract recommended for skin care and Personal Care applications.

Recommended usage level: Aqueous and transparent formulations: 0.1 - 0.5%; Emulsions: 1 - 3%

Organic Glycerin

(INCI: Glycerin)

Glycerin is a syrupy, odourless and colourless liquid with great moisturising properties. Glycerin can retain several times its weight in water, making it a key ingredient in various cosmetics formulations such as: Soap, Shaving foam, Toothpaste, Hair care, Skin care.

Our Organic Glycerin is made with vegetable oil of Karanja, tree from fabaceae family, native from Asia. In India Karanja's crops are widely encouraged to rehabilitate areas traditionally considered as unworkable. Cosmetic and Food grade. Halal certified.

Recommended usage level: 0.5 - 10%

Madder Dye Extract

(INCI: Rubia tinctorum root extract, Maltodextrin)

Yellow/ Orange soluble dye plant extract recommended for skin care and Personal Care applications.

Recommended usage level: Aqueous and transparent formulations: 0.1 - 0.5%; Emulsions: 1 - 3%

Organic Deodorised Coconut Oil

(INCI: Cocos Nucifera Oil)

Organic Deodorised Coconut Oil is a light oil rich in medium chain fatty acids and particularly Lauric Acid, which makes it ideal for use in soaps. It also acts as an excellent emollient with a great affinity for skin and hair. Ideal for soaps, moisturisers, massage oils and hair products.

Recommended usage level: 1-10%

Organic Olive Oil

(INCI: Olea Europaea Fruit Oil)

Organic Olive Oil is rich in essential fatty acids, tocopherols and squalene and acts as a natural emollient, moisturiser and skin regenerator. Ideal for use in skincare, body care, haircare, hand care and bar soaps. Available in Organic Extra Virgin, Organic Deodorised and Organic Fairtrade options.

Recommended usage level: 1-10%

Organic Sunflower Oil

(INCI: Helianthus Annuus Seed Oil)

Organic Sunflower Oil is rich in linoleic acid, oleic acid and vitamin E and helps to soothe and moisturise the skin, as well as condition dry hair. Ideal for use as a base oil in anhydrous products and also in skincare, haircare, baby, massage and bath products. Available in Organic Deodorised high oleic and Organic Deodorised options.

Recommended usage level: up to 70%

PHYTOSQUALAN

(INCI: Squalane)

Phytosqualan is a natural vegetable squalane, sourced from olive, a renewable vegetable source, and recognised as a high quality emollient. SOPHIM is leader in vegetable squalane production and thanks to an advanced technology, and unique process, offers a premium and sustainable qualitative ingredient.

When testing on hair Phytosqualan was found to reduce frizz, increase gloss and improve combability. Ideal for pigment dispersion, texturising hair care and moisturising face and body care.

Recommended usage level: 3-10%

PhytOlive® Fine

(INCI: Olea Europaea Seed)

PhytOlive® Fine is an olive sourced exfoliant offering a bio-based alternative to plastic beads scrubs. Its uniqueness is due to its sourcing and sensory properties, at the core of SOPHIM's values.

PhytOlive® Fine is made in France (Provence Origin), and is upcycled from olive stones. This smooth exfoliant offers a grain size of 500 microns, fitting various needs and offering multiple opportunities to formulators such as, skin purification and skin cleansing.

Recommended usage level: 5-25%

PROVENCE CRYSTAL

(INCI: Sea Salt (Maris Sal))

Rich in minerals such as, calcium, sodium, magnesium and potassium, this thick layer of sea salt provides exfoliation for a soothing effect and skin homeostasis.

Recommended usage level: 1 - 80%

SAGE EXTRACT H.GL. - M.S

(INCI: Glycerin, Aqua, Salvia Officinalis (Sage) Leaf Extract, Potassium Sorbate, Sodium Benzoate)

SAGE EXTRACT H.GL. - M.S. is an extract in Glycerin/ water from the leaves of "Salvia officinalis L."

Sage Extract demonstrates antimicrobial activity, antioxidant activity, anti-secretory, anti-perspirant activity, anti-inflammatory activity, activity on hair and astringent activity. The antimicrobial activity is mainly due to the thujones in the essential oil. Externally applied thujones seem to have antihydrotic activity, since they block the nerve terminals in sweat glands.

Sage leaves also have a well-known antioxidant activity based on their phenolic compounds content.

SAGE EXTRACT H.GL. - M.S. is ideal for formulating tonics, deodorants, purifying, reactivating, anti-perspirant and anti-dandruff products up to 1% dry extract and up to 5% glycolic and fluid extracts when used in stimulating and purifying hair lotions, toothpastes, greasy and opaque skin products, deodorants and anti-perspirants. It can be used at up to 10% in bath and shower gel and shampoo.

Recommended usage level: 0.5-5%

SEA MINERALS EXTRACT H.G.

(INCI: Propylene Glycol, Aqua, Sea Salt, Fucus Vesiculosus Extract, Laminaria Digitata Extract, Laminaria Hyperborea Extract, Sodium Benzoate, Potassium Sorbate)

Sea Minerals Extract HG restores activity on skin homeostasis, anti-inflammatory anti-ageing.

It's restoring activity on skin homeostasis is due to the Fucus alginates and Fucus and sea salt ions. The anti-inflammatory activity of is due to the mucilage properties of hydrocolloidal polysaccharides, and its anti-aging activity is due to Fucoidan and sulfated polysaccharides from this seaweed.

Ideal for us in calming, soothing and emollients up to 1% of the dry extract and up to 10% of the glycolic extract in slimming products (bath and shower gel, cream) and body massage creams.

Recommended usage level: 0.5-5.0%

Sappanwood Dye Extract

(INCI: Caesalpinia sappan bark extract, Maltodextrin)

Orange/ Red soluble dye plant extract recommended for skin care and Personal Care applications.

Recommended usage level: Aqueous and transparent formulations: 0.1 - 0.5%; Emulsions: 1 - 3%

SWEET ALMOND MILK - NAT

(INCI: Aqua, Prunus Amygdalus Dulcis (Sweet Almond) Fruit Extract, Zea Mays (Corn) Starch, Glycerin, Prunus Amygdalus Dulcis (Sweet Almond) Oil, Polyglyceryl-4 Caprate, Xanthan Gum, Gluconolactone, Tocopherol, Sodium Benzoate, Potassium Sorbate, Calcium Gluconate)

SWEET ALMOND MILK - NAT- NAT is an emulsion of natural ingredients that contains lipids, proteins and sugars from the fruit of "Prunus amygdalus v. dulcis L." Ideal for hair and skin care where it offers moisturising, conditioning repairing and emollient properties.

Recommended usage level: 0.5-5%

TI-NatSurf® BW

(INCI: Aqua (Water), Decyl Glucoside, Sodium Myristoyl Sarcosinate, Cocamidopropyl Hydroxysultaine, Sodium Cocoyl Amino Acids (Apple))

TI-NatSurf® BW is designed for formulating premium range of high-end bath, body, and hair products. It may be used as the primary or as the secondary surfactant offering excellent hydrophobe compatibility without compromising foam integrity.

It has excellent compatibility with traditional anionic systems, such as lauryl and laureth sulphates and a variety of sulphonates, making it an ideal choice for secondary surfactant replacement, to improve foam characteristics of a system.

Its uncompromising foam performance in the presence of natural polar oils, makes it the ideal candidate in the preparation of moisturising bath products offering exception post-rinse sensory.

Recommended usage level: 25 – 50%

TI-NatSurf® QCB

(INCI: Aqua (Water), Cocamidopropyl Hydroxysultaine, Myristamine Oxide, Caprylyl/ Capryl Glucoside, Decyl Glucoside)

The TI-NatSurf® QCB is a uniquely designed to provide versatility in formulation a wide range of personal care cleansing preparations. It may be used as the primary or as the secondary surfactant offering excellent hydrophobe compatibility without compromising foam integrity.

It has excellent compatibility with traditional anionic systems, such as lauryl and laureth sulphates and a variety of sulphonates, making it an ideal choice for secondary surfactant replacement, to improve foam characteristics of a system. Its hydrophobe compatibility allows the formulation of crystal clear micro-emulsions with emollient esters, and other natural polar oils, offering exception post-rinse sensory.

It is compatible with quaternary ammonium compounds and other cationics, and has great compatible with high electrolyte levels, while still maintain a crystal clear system.

Recommended usage level: 25 – 50%

TI-NatSurf® FHS

(INCI: Aqua (Water), Caprylyl/ Capryl Glucoside, Sodium Lauroyl Sarcosinate, Decyl Glucoside, Cocamidopropyl Hydroxysultaine, Sodium Cocoyl Amino Acids (Apple))

TI-NatSurf® FHS is specifically designed for use in low viscosity aerated pump foaming systems. It may be used as the primary or as the secondary surfactant in a variety of sulphate-free toiletry preparations using aerated pump foaming systems as their mode of delivery.

It has excellent compatibility with traditional anionic systems, such as lauryl and laureth sulphates and a variety of sulphonates. Its hydrophobe compatibility allows the formulation of crystal clear micro-emulsions or stable opaque dispersions with emollient esters, and other natural polar oils.

Recommended usage level: 25 - 50%

XERADIN™

(INCI: Propanediol, Aqua, Glycerin, Salvia Sclarea (Clary) Extract, Potassium Sorbate, Sodium Benzoate)

Vegetable source of 24-hour hydration based on adaptogenic mechanism of a xerophytic plant. Provides hydrating action thanks to its high sugar and flavonoid content. Immediate and all-day-long hydration power. Ideal for immediate action; face and body creams, milks and lotions, shampoos, aftershaves and bath moisturising products. It can also be used in 24-hour action products such as intensive moisturising products, products for dry skin, anti-ageing and extreme sports moisturisation.

Recommended usage level: 2 - 4%

ZENERBET®

(INCI: Octyl Dodecyl Dimer Dilinoleyl Alcohol/Succinic Acid Copolymer)

Zenerbet® is a unique Guerbet polyester made from naturally derived Dimer Alcohol, Dimer acid (Succinic acid) and Guerbet alcohol (Cetyl Dodecanol). This 100% active branched polymeric Guerbet, which has a high molecular weight (10,000+) is a hydrophobic products that can be used in a variety of hair, colour, skin and sun care applications.

Zenerbet® is a branched liquid that lubricates and conditions skin and hair. Its high molecular weight has superb barrier qualities making it a wonderful product with dramatic effects in skin and sun applications as well as products for dry hair and scalp.

Its hydrophobic properties prevent it from washing off making it an excellent natural water resister and film forming polymer.

Recommended usage level: 0.5 - 10%

ZENESTER® S

(INCI: PEG-8 Dimethicone/Dimer Dilinoleic Acid Copolymer)

Zenester® S is a water soluble high molecular weight (25,000) polymeric silicone polyester. It is highly lubricious and provides excellent wet comb and conditioning as well as superb skin feel when delivered from aqueous systems.

Zenester® S is non-ionic and is compatible with cationic and anionic systems thereby providing the formulator with greater latitude. This product is water soluble and goes clear into a formula. Zenester® S is patent pending.

Recommended usage level: 0.25 - 4%

ZENESTER® ME

(INCI: Bis-PEG10 Dimethicone/Dimer Dilinoleate Copolymer)

Zenester® ME is a high molecular weight (36,000) polymeric silicone polyester, it is a completely reacted product. It is highly lubricious, provides superb skin feel when delivered from aqueous systems.

Zenester® ME is non-ionic and is compatible with oil/water and water/oil systems as well as anionic systems, thereby providing the formulator with greater latitude.

Zenester® ME is water dispersible and would be brilliant in sun and skin applications. Zenester® ME is patent pending.

Recommended usage level: 0.25 - 4%

ZENICONE® IX

(INCI: PEG-8 Dimethicone, PEG-8 Ricinoleate)

This versatile product is a water-soluble polymer. It is very substantive to hair and skin. Since the product is non-ionic, it is compatible with cationic and anionic surfactants.

Additionally, it acts as a coupler for W/O emulsions and blends clear into formulas. It contributes to volumising in normal to oily hair shampoos. This unique compound has superb pigment wetting and dispersion properties.

It may be used in spray-on sun and moisturising applications.

Recommended usage level: 0.25 - 4%

ZENICONE® XQ

(INCI: PEG-8 Dimethicone, PEG-8 Ricinoleate, Polyquaternium 57)

This multi-functional water-soluble polymer created from a castor based quaternary will improve volumising and manageability of dry and damaged hair. It has a high molecular weight and is very mild in formulations used for skin and sun applications.

Recommended usage level: 0.25 - 4%

ZENIGLOSS® Q

(INCI: Polyquaternium-57)

This new quaternary compound is based on polymerised castor oil. Its cationic nature provides substantive conditioning and gloss to the hair making it ideal for conditioners. It performs very effectively on damaged (coloured, permed, or bleached) hair and is a superb detangler.

Zenigloss® Q is an extremely mild polymer and can be used for body washes, skin and hair applications. In 2in1 shampoos Zenigloss® Q has been found to outperform conventional silicone based ingredients in both wet and dry comb performance, as well as gloss providing shine to the hair.

Can also be used in nail varnish removers.

Recommended usage level: 0.5 - 4%

ZENICONE® XX

(INCI: PEG-8 Dimethicone, PEG-8 Ricinoleate)

ZENICONE® XX is a high molecular weight (6,000) water-soluble polymer. This highly substantive product does not adversely affect foam or viscosity in shampoos while contributing to volumizing and improved comb through.

In skin and sun emulsions, the high molecular weight increase substantivity and creates a lubricious emollient feel while leaving the skin soft and smooth.

Recommended usage level: 0.25 - 4%

ZENIGLOSS® Q-SE

(INCI: Polyquaternium-57, PEG 8 Ricinoleate)

This self-emulsifying quaternary compound based on Zenigloss® Q-SE forms a stable emulsion when mixed into cold or warm water. The self-emulsifying properties result in an easy to use conditioning system that provides substantivity and gloss to all applications.

It performs very effectively on damaged (coloured, permed, or bleached) hair and is a superb detangler. Zenigloss® Q-SE is an extremely mild polymer and can be used for body washes, skin and hair applications.

In 2in1 shampoos Zenigloss® Q-SE has been found to outperform conventional silicone based ingredients in both wet and dry comb performance, as well as gloss providing shine to the hair. Can also be used in nail varnish removers.

Recommended usage level: 2 - 8%

ZENIGLOSS® S

(INCI: Castor Isostearate Beeswax Succinate)

This unique solid polymer with its high molecular weight improves substantivity and puts exceptional gloss in a wide variety of applications.

ZENIGLOSS® S has excellent pigment wetting and dispersion attributes. It is ideal for use in colour cosmetics, AP sticks, makeup sticks, and pencils as well as body scrubs.

It is natural and biodegradable and 100% active.

Recommended usage level: 2 - 10%

Contact Us

Interested?

Then contact the Infinity team
for more information:

T: 01344 354 900

E: technical@infinity-ingredients.co.uk

W: infinity-ingredients.co.uk