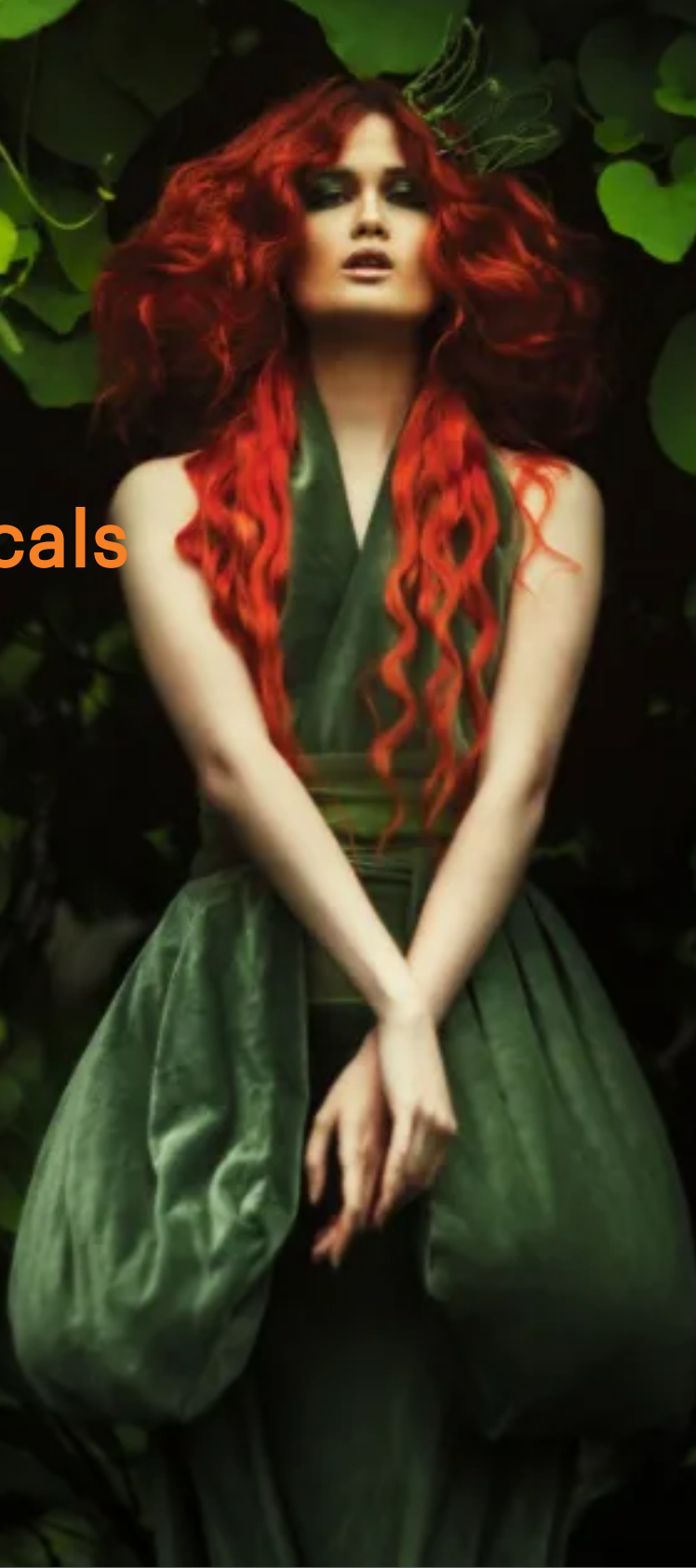


# INFINITY GREDIENTS

Inspiring Cosmetics

Botanicals



## Botanicals

A comprehensive range of Botanical ingredients.

When it comes to formulations, botanical and algae extracts can be a highly cost-effective addition to help support product positioning and marketing claims. Often the issue is the solvent/ preservatives used. At Infinity Ingredients we are delighted to be able to offer extracts in glycerin and water for minimal impact to formulations. Available in both standard and organically certified grades.

For anhydrous formulations ingredient options can often be somewhat limited. We offer a wide choice of oily macerates in sunflower oil to help support pack claims and again these are also available as organically certified.

To replace water in formulations or to increase your organic content our organic fruit and floral waters can be used.

Plant extracts can be used to colour transparent formulations and clays to naturally colour opaque products such as, creams, lotions, toothpastes and bar soaps. Available as dye extracts, pigmented oils and pigments.

When it comes to plants the whole plant can of course be used and as such, we offer a number of different scrub particles for physical exfoliation.

So, scroll down now to see the many options we offer.

## Coloured Clays

### Beige Clay

(INCI: Montmorillonite)

Beige Clay is a natural silicate, complex of aluminium, iron and magnesium. Ideal for detoxifying, remineralising and soothing. Can also provide natural colour to cosmetic products.

Recommended usage level: 1 - 40%

### Green Clay - Illite

(INCI: Illite)

Green Clay is recommended for products used to treat greasy hair and oily, acne-prone skin. Provides antiseptic, purifying, remineralising and sebo regulating activities. Can also provide natural colour to cosmetic products.

Recommended usage level: 1 - 40%

### Green Clay

(INCI: Montmorillonite)

Green Clay is a natural silicate, complex of aluminium, iron and magnesium. Green Clay has the strongest adsorbative power compared to other types of clays.

Thanks to its richness in mineral salts and trace elements, it has many properties which makes it a good ingredients for skin and hair care products including, adsorbing and absorbing, detoxifying, remineralising and tonifying, purifying and repairing. It can also be used in toothpastes as a thickener and/ or as mild abrasive. Can also provide natural colour to cosmetic products.

Recommended usage level: 1 - 40%

### Pink Clay SP

(INCI: Kaolin)

Pink Clay SP is obtained by drying of natural clay (kaolinite). Then it is grinded to reduce the particle size.

Pink Clay SP is very rich in trace elements and mineral salts. It can constricts skin pores thanks to its astringent effect. Moreover, Pink Clay SP is antiseptic, and has regenerating properties.

It offers an healthy-glow effect, decreases redness and gives a clear complexion to tired skin.

It provides a pink colour

Recommended usage level: 1 - 40%

## Red Clay

(INCI: Montmorillonite)

Red Clay offers soothing, re-balancing and re-mineralising properties. Ideal for sensitive and reactive skin types. It is also very useful for tightening dilated pores and for attenuating small skin redness. Can also provide natural colour to cosmetic products for a healthy glow effect. In solid formulations, its pink-orange colour makes it a perfect additive for colouring soaps.

Recommended usage level: 1 - 40%

## Rhassoul Clay

(INCI: Moroccan lava clay)

Rhassoul is a Moroccan lava clay, part of the Hammam rituals and is used in both skin and hair care. Unlike soap, Rhassoul cleanses without surfactant by naturally absorbing grease, sebum and impurities to purify the skin and hair.

Rhassoul Clay is ideal for formulating solid and powder cosmetic products such as, powdered face masks, cleansing pastes, powder cleansers, lotions, body wraps, scrubs, powdered shower gels, solid soap, shampoo bars, dry shampoo and hair masks.

Recommended usage level: 1-40%

## White Clay

(INCI: Kaolin)

White clay is very effective for fragile and dry skin thanks to its adsorbing, purifying, cleansing, absorbing and mattifying, repairing and soothing properties. White clay can be used in toothpastes as a thickener and/ or as mild abrasive.

Recommended usage level: 1 - 40%

# Exfoliating Powders

## Almond Exfoliating Powder

(INCI: Prunus amygdalus dulcis shell powder)

Almond exfoliating powder for physical exfoliation of dead skin cells. Available in a range of particle sizes and organic.

Recommended usage level: 0.2 to 10%, depending on application.

## Argan Exfoliating Powder

(INCI: Argania Spinosa shell powder)

Argan Exfoliating Powder for physical exfoliation of dead skin cells. Available in a range of particle sizes and organic.

Recommended usage level: 0.2 to 10%, depending on application.

## Bamboo Exfoliating Powder NI

(INCI: Bambusa arundinacea stem extract)

Non-irradiated Bamboo exfoliating powder for physical exfoliation of dead skin cells.

Recommended usage level: 0.2 to 10%, depending on application.

## Black Sand from Polynesia

(INCI: Silica)

Black Sand exfoliating powder from Polynesia for physical exfoliation of dead skin cells.

Recommended usage level: 0.2 to 10%, depending on application.

## Apricot Exfoliating Powder

(INCI: Prunus Armeniaca Seed Powder)

Apricot exfoliating powder for physical exfoliation of dead skin cells. Available in a range of particle sizes and organic.

Recommended usage level: 0.2 to 10%, depending on application.

## Bamboo Exfoliating Powder

(INCI: Bambusa arundinacea stem extract)

Bamboo exfoliating powder for physical exfoliation of dead skin cells. Available in a range of particle sizes.

Recommended usage level: 0.2 to 10%, depending on application.

## Black Rice Exfoliating Powder

(INCI: Oryza sativa Powder)

Black Rice exfoliating powder for physical exfoliation of dead skin cells. Available in a range of particle sizes.

Recommended usage level: 0.2 to 10%, depending on application.

## Cherry Exfoliating Powder

(INCI: Prunus cerasus shell powder)

Cherry exfoliating powder for physical exfoliation of dead skin cells. Available in a range of particle sizes.

Recommended usage level: 0.2 to 10%, depending on application.

## Chia Exfoliating Powder

(INCI: Salvia hispanica seed)

Chia exfoliating powder for physical exfoliation of dead skin cells. Available in a range of particle sizes.

Recommended usage level: 0.2 to 10%, depending on application.

## Cocoa Exfoliating Powder

(INCI: Theobroma cacao shell powder)

Cocoa exfoliating powder for physical exfoliation of dead skin cells. Available in a range of particle sizes.

Recommended usage level: 0.2 to 10%, depending on application.

## Coconut Exfoliating Powder NI

(INCI: Cocos nucifera shell powder)

Non-irradiated Coconut exfoliating powder for physical exfoliation of dead skin cells. Available in a range of particle sizes.

Recommended usage level: 0.2 to 10%, depending on application.

## Coffee Exfoliating Powder

(INCI: Coffee arabica seed powder)

Coffee exfoliating powder for physical exfoliation of dead skin cells. Available in a range of particle sizes.

Recommended usage level: 0.2 to 10%, depending on application.

## Corindon Exfoliating Powder

(INCI: Alumina)

Corindon exfoliating powder for physical exfoliation of dead skin cells. Available in a range of particle sizes.

Recommended usage level: 0.2 to 10%, depending on application.

## Cinnamon Exfoliating Powder

(INCI: Cinnamomum Zeylanicum bark powder)

Cinnamon Exfoliating Powder for physical exfoliation of dead skin cells. Available in a range of particle sizes.

Recommended usage level: 0.2 to 10%, depending on application.

## Coconut Exfoliating Powder

(INCI: Cocos nucifera shell powder)

Coconut exfoliating powder for physical exfoliation of dead skin cells. Available in a range of particle sizes.

Recommended usage level: 0.2 to 10%, depending on application.

## Coconut Pulp Exfoliating Powder

(INCI: Cocos Nucifera Fruit Powder)

Coconut Pulp Exfoliating Powder for physical exfoliation of dead skin cells. Available in a range of particle sizes.

Recommended usage level: 0.2 to 10%, depending on application.

## Coral Exfoliating Powder

(INCI: Coral powder)

Coral exfoliating powder for physical exfoliation of dead skin cells. Available in a range of particle sizes.

Recommended usage level: 0.2 to 10%, depending on application.

## Cranberry Exfoliating Powder

(INCI: Vaccinium macrocarpon fruit powder)

Cranberry exfoliating powder for physical exfoliation of dead skin cells. Available in a range of particle sizes.

Recommended usage level: 0.2 to 10%, depending on application.

## Cranberry Exfoliating Powder NI

(INCI: Vaccinium macrocarpon fruit powder)

Non-irradiated Cranberry exfoliating powder for physical exfoliation of dead skin cells. Available in a range of particle sizes.

Recommended usage level: 0.2 to 10%, depending on application.

## EXFO-BAMBOO FACE

(INCI: Bambusa Arundinacea Stem Powder)

A natural exfoliant from bamboo, native to Asia.

At 200µm it is ideal for facial applications and is dispersible in both oil and water.

Recommended usage level: 5-10%

## Grape Exfoliating Powder

(INCI: Vitis Vinifera seed powder)

Grape Exfoliating Powder for physical exfoliation of dead skin cells. Available in a range of particle sizes and organic.

Recommended usage level: 0.2 to 10%, depending on application.

## Himalayan Pink Salt Exfoliating Powder

(INCI: Sodium chloride)

Himalayan Pink Salt exfoliating powder for physical exfoliation of dead skin cells. Available in a range of particle sizes.

Recommended usage level: 0.2 to 10%, depending on application.

## EXFO-AMBER

(INCI: Amber Powder)

Natural organic gem for physical skin exfoliation and skin purifying.

For smooth, bright and luminous skin with a touch of elegance. Removes dead surface cells through a mechanical action that improves the texture of the skin, the natural regeneration of the epidermis and the penetration of cosmetic active ingredients.

Recommended usage level: 5-10%

## FLOWER OF SUN

(INCI: Sea Salt (Maris Sal))

FLOWER OF SUN is a high quality of salt flower rich in magnesium and harvested under traditional method in the Provence region of France. These salt marshes are very special. The presence of a microscopic algae colours the pools creating, a colour chart from pink to purple. Flower of sun corresponds to the very thin layer made of salt flower crystals in the surface of the pools. Magnesium-rich seasalt is known as an effective treatment of sensitive skin as well as psoriasis and atopic dermatitis. Ideal for exfoliation, skin homeostasis and skin soothing.

Recommended usage level: 1-3%

## Hibiscus Exfoliating Powder

(INCI: Hibiscus sabdariffa flower powder)

Hibiscus Exfoliating Powder for physical exfoliation of dead skin cells. Available in a range of particle sizes.

Recommended usage level: 0.2 to 10%, depending on application.

## Kiwi Exfoliating Powder

(INCI: Actinidia chinensis seed)

Kiwi exfoliating powder for physical exfoliation of dead skin cells. Available in a range of particle sizes.

Recommended usage level: 0.2 to 10%, depending on application.

## Lavender Exfoliating Powder

(INCI: Lavandula angustifolia flower)

Lavender exfoliating powder for physical exfoliation of dead skin cells. Available in a range of particle sizes and organic.

Recommended usage level: 0.2 to 10%, depending on application.

## Lithothamnium Exfoliating Powder

(INCI: Lithothamnium calcareum powder)

Lithothamnium exfoliating powder for physical exfoliation of dead skin cells. Available in a range of particle sizes.

Recommended usage level: 0.2 to 10%, depending on application.

## Lychee Exfoliating Powder

(INCI: Litchi Chinensis seed powder)

Lychee exfoliating powder for physical exfoliation of dead skin cells. Available in a range of particle sizes.

Recommended usage level: 0.2 to 10%, depending on application.

## Orange Exfoliating Powder

(INCI: Citrus aurantium dulcis peel powder)

Orange exfoliating powder for physical exfoliation of dead skin cells. Available in a range of particle sizes.

Recommended usage level: 0.2 to 10%, depending on application.

## Lemon Exfoliating Powder

(INCI: Citrus limon peel powder)

Lemon exfoliating powder for physical exfoliation of dead skin cells. Available in a range of particle sizes.

Recommended usage level: 0.2 to 10%, depending on application.

## Lithothamnium Exfoliating Powder NI

(INCI: Lithothamnium calcareum powder)

Non-irradiated Lithothamnium exfoliating powder for physical exfoliation of dead skin cells. Available in a range of particle sizes.

Recommended usage level: 0.2 to 10%, depending on application.

## Olive Exfoliating Powder

(INCI: Olea europaea seed powder)

Olive exfoliating powder for physical exfoliation of dead skin cells. Available in a range of particle sizes and organic.

Recommended usage level: 0.2 to 10%, depending on application.

## Passionfruit Exfoliating Powder

(INCI: Passiflora edulis seed powder)

Passionfruit exfoliating powder for physical exfoliation of dead skin cells. Available in a range of particle sizes.

Recommended usage level: 0.2 to 10%, depending on application.

## Peach Exfoliating Powder

(INCI: Prunus Persica Seed Powder)

Peach exfoliating powder for physical exfoliation of dead skin cells. Available in a range of particle sizes.

Recommended usage level: 0.2 to 10%, depending on application.

## PhytOlive® Fine

(INCI: Olea Europaea Seed)

PhytOlive® Fine is an olive sourced exfoliant offering a bio-based alternative to plastic beads scrubs. Its uniqueness is due to its sourcing and sensory properties, at the core of SOPHIM's values.

PhytOlive® Fine is made in France (Provence Origin), and is upcycled from olive stones. This smooth exfoliant offers a grain size of 500 microns, fitting various needs and offering multiple opportunities to formulators such as, skin purification and skin cleansing.

Recommended usage level: 5-25%

## Pomegranate Exfoliating Powder

(INCI: Punica granatum seed powder)

Pomegranate exfoliating powder for physical exfoliation of dead skin cells. Available in a range of particle sizes and organic.

Recommended usage level: 0.2 to 10%, depending on application.

## Poppy Exfoliating Powder

(INCI: Papaver somniferum seed)

Poppy exfoliating powder for physical exfoliation of dead skin cells.

Recommended usage level: 0.2 to 10%, depending on application.

## Prickly Pear Exfoliating Powder

(INCI: Opuntia Ficus-Indica Fruit extract)

Prickly Pear Exfoliating Powder for physical exfoliation of dead skin cells. Available in a range of particle sizes.

Recommended usage level: 0.2 to 10%, depending on application.

## PROVENCE CRYSTAL

(INCI: Sea Salt (Maris Sal))

Rich in minerals such as, calcium, sodium, magnesium and potassium, this thick layer of sea salt provides exfoliation for a soothing effect and skin homeostasis.

Recommended usage level: 1 - 80%

## Raspberry Exfoliating Powder

(INCI: Rubus idaeus seed Powder)

Raspberry exfoliating powder for physical exfoliation of dead skin cells. Available in a range of particle sizes and organic.

Recommended usage level: 0.2 to 10%, depending on application.

## Rhyolite Exfoliating Powder

(INCI: Pumice)

Rhyolite exfoliating powder for physical exfoliation of dead skin cells. Available in a range of particle sizes.

Recommended usage level: 0.2 to 10%, depending on application.

## Rhyolite Exfoliating Powder NI

(INCI: Pumice)

Non-irradiated Rhyolite exfoliating powder for physical exfoliation of dead skin cells. Available in a range of particle sizes.

Recommended usage level: 0.2 to 10%, depending on application.

## Rose Hip Exfoliating Powder

(INCI: Rosa canina fruit extract)

Rose Hip exfoliating powder for physical exfoliation of dead skin cells. Available in a range of particle sizes and organic.

Recommended usage level: 0.2 to 10%, depending on application.

## Silica Exfoliating Powder

(INCI: Silica)

Silica exfoliating powder for physical exfoliation of dead skin cells. Available in a range of particle sizes.

Recommended usage level: 0.2 to 10%, depending on application.

## Strawberry Exfoliating Powder

(INCI: Fragaria vesca seed)

Strawberry exfoliating powder for physical exfoliation of dead skin cells. Available in a range of particle sizes.

Recommended usage level: 0.2 to 10%, depending on application.

## Vanilla Exfoliating Powder

(INCI: Vanilla planifolia fruit)

Vanilla Exfoliating Powder for physical exfoliation of dead skin cells. Available in a range of particle sizes.

Recommended usage level: 0.2 to 10%, depending on application.

## Rice Exfoliating Powder

(INCI: Oryza sativa powder)

Rice exfoliating powder for physical exfoliation of dead skin cells. Available in a range of particle sizes and organic.

Recommended usage level: 0.2 to 10%, depending on application.

## Shea Exfoliating Powder

(INCI: Butyrospermum Parkii Nut Shell Powder)

Shea exfoliating powder for physical exfoliation of dead skin cells. Available in a range of particle sizes and organic.

Recommended usage level: 0.2 to 10%, depending on application.

## SOY EXTRACT GNB

(INCI: Aqua, Glycerin, Glycine Soja (Soybean) Seed Extract, Sodium Benzoate, Potassium Sorbate)

SOY EXTRACT GNB is a water-soluble extract. Anti-ageing. Antioxidant. Photoprotection. Hair colour protection. Moisturising. Skin and hair conditioning.

Recommended usage level: 0.5-5%

## Tamanu Exfoliating Powder

(INCI: Calophyllum inophyllum shell powder)

Tamanu Exfoliating Powder for physical exfoliation of dead skin cells. Available in a range of particle sizes.

Recommended usage level: 0.2 to 10%, depending on application.

## Walnut Exfoliating Powder

(INCI: Juglans regia shell powder)

Walnut exfoliating powder for physical exfoliation of dead skin cells. Available in a range of particle sizes.

Recommended usage level: 0.2 to 10%, depending on application.



## Floral Waters

### Cornflower Floral Water

(INCI: Centaurea cyanus flower water, Citric acid, Sodium benzoate, Potassium sorbate)

Dried Cornflower petals. Distillation through steam water, without chemical treatment, at  $\pm 100^{\circ}\text{C}$ , under atmospheric pressure.

Recommended usage level: 1 - 100%

### Everlasting Floral Water

(INCI: Helichrysum arenarium flower extract, Citric acid, Sodium benzoate, Potassium sorbate)

Dried Everlasting petals. Distillation through steam water, without chemical treatment, at  $\pm 100^{\circ}\text{C}$ , under atmospheric pressure.

Recommended usage level: 1 - 100%

### Lavender Floral Water

(INCI: Lavendula angustifolia flower water, Citric acid, Sodium benzoate, Potassium sorbate)

Dried Lavender flowers. Distillation through steam water, without chemical treatment, at  $\pm 100^{\circ}\text{C}$ , under atmospheric pressure.

Recommended usage level: 1 - 100%

### Orange Floral Water

(INCI: Citrus aurantium amara flower, Citric acid, Sodium benzoate, Potassium sorbate)

Dried Orange flowers. Distillation through steam water, without chemical treatment, at  $\pm 100^{\circ}\text{C}$ , under atmospheric pressure.

Recommended usage level: 1 - 100%

### Elder Floral Water

(INCI: Sambucus nigra flower water, Citric acid, Sodium benzoate, Potassium sorbate)

Dried Elder petals. Distillation through steam water, without chemical treatment, at  $\pm 100^{\circ}\text{C}$ , under atmospheric pressure.

Recommended usage level: 1 - 100%

### Green Tea Floral Water

(INCI: Camellia sinensis leaf water, Citric acid, Sodium benzoate, Potassium sorbate)

Dried Green Tea leaves. Distillation through steam water, without chemical treatment, at  $\pm 100^{\circ}\text{C}$ , under atmospheric pressure.

Recommended usage level: 1 - 100%

### Orange Floral Water

(INCI: Citrus aurantium amara flower, Citric acid, Sodium benzoate and Potassium sorbate)

Orange Floral Water. Distillation through steam water, without chemical treatment of the water.

Recommended usage level: 1 - 20%

### Peppermint Floral Water

(INCI: Mentha piperita leaf water, Citric acid, Sodium benzoate, Potassium sorbate)

Dried Peppermint leaves. Distillation through steam water, without chemical treatment, at  $\pm 100^{\circ}\text{C}$ , under atmospheric pressure.

Recommended usage level: 1 - 100%

## Roman Chamomile Floral Water

(INCI: Anthemis nobilis flower water, Citric acid, Sodium benzoate, Potassium sorbate)

Dried Roman Chamomile leaves. Distillation through steam water, without chemical treatment, at  $\pm 100^{\circ}\text{C}$ , under atmospheric pressure.

Recommended usage level: 1 - 100%

## Rosa Floral Water

(INCI: Rosa damascena flower water, Citric acid, Sodium benzoate, Potassium sorbate)

Dried Rose flowers. Distillation through steam water, without chemical treatment, at  $\pm 100^{\circ}\text{C}$ , under atmospheric pressure.

Recommended usage level: 1 - 100%

## Thyme Floral Water

(INCI: Thymus vulgaris leaf water, Citric acid, Sodium benzoate, Potassium sorbate)

Dried Thyme leaves. Distillation through steam water, without chemical treatment, at  $\pm 100^{\circ}\text{C}$ , under atmospheric pressure.

Recommended usage level: 1 - 100%

## Rosa Centifolia Floral Water

(INCI: Rosa centifolia flower water, Citric acid, Sodium benzoate, Potassium sorbate)

Dried Rosa Centifolia flowers. Distillation through steam water, without chemical treatment, at  $\pm 100^{\circ}\text{C}$ , under atmospheric pressure.

Recommended usage level: 1 - 100%

## Sage Floral Water

(INCI: Salvia officinalis leaf water, Citric acid, Sodium benzoate, Potassium sorbate)

Dried Sage leaves. Distillation through steam water, without chemical treatment, at  $\pm 100^{\circ}\text{C}$ , under atmospheric pressure.

Recommended usage level: 1 - 100%

## Witch Hazel Floral Water

(INCI: Hamamelis virginiana leaf water, Citric acid, Sodium benzoate, Potassium sorbate)

Dried Witch Hazel leaves. Distillation through steam water, without chemical treatment, at  $\pm 100^{\circ}\text{C}$ , under atmospheric pressure.

Recommended usage level: 1 - 100%

# Hydroglycerin Extracts

## Acerola Hydroglycerin Extract

(INCI: Water, Glycerin, Malpighia punicifolia fruit extract, Citric acid, Sodium benzoate, Potassium sorbate)

Acerola extract obtained by filtration after a long maceration of the plant in a blend of water and vegetable palm-free glycerin.

Recommended usage level: 1 - 5%

## Almond Hydroglycerin Extract

(INCI: Water, Glycerin, Prunus amygdalus dulcis fruit extract, Citric acid, Sodium benzoate, Potassium sorbate)

Almond extract obtained by filtration after a long maceration of the plant in a blend of water and vegetable palm-free glycerin.

Recommended usage level: 1 - 5%

## Aloe Vera Hydroglycerin Extract

(INCI: Water, Glycerin, Aloe barbadensis leaf extract, Citric acid, Sodium benzoate, Potassium sorbate)

Aloe vera extract obtained by filtration after a long maceration of the plant in a blend of water and vegetable palm-free glycerin.

Recommended usage level: 1 - 5%

## AlfaAlfa Hydroglycerin Extract

(INCI: Water, Glycerin, Medicago sativa extract, Citric acid, Sodium benzoate, Potassium sorbate)

AlfaAlfa extract obtained by filtration after a long maceration of the plant in a blend of water and vegetable palm-free glycerin.

Recommended usage level: 1 - 5%

## Almond Shell Hydroglycerin Extract

(INCI: Water, Glycerin, Prunus amygdalus dulcis shell extract, Citric acid, Sodium benzoate, Potassium sorbate)

Almond shell extract obtained by filtration after a long maceration of the plant in a blend of water and vegetable palm-free glycerin.

Recommended usage level: 1 - 5%

## Apple Hydroglycerin Extract

(INCI: Water, Glycerin, Pyrus malus fruit extract, Citric acid, Sodium benzoate, Potassium sorbate)

Apple extract obtained by filtration after a long maceration of the plant in a blend of water and vegetable palm-free glycerin.

Recommended usage level: 1 - 5%

### **Apricot Hydroglycerin Extract**

(INCI: Water, Glycerin, Prunus armeniaca fruit extract, Citric acid, Sodium benzoate, Potassium sorbate)

Apricot extract obtained by filtration after a long maceration of the plant in a blend of water and vegetable palm-free glycerin.

Recommended usage level: 1 - 5%

### **Avocado Hydroglycerin Extract**

(INCI: Water, Glycerin, Persea gratissima fruit extract, Citric acid, Sodium benzoate, Potassium sorbate)

Avocado extract obtained by filtration after a long maceration of the plant in a blend of water and vegetable palm-free glycerin.

Recommended usage level: 1 - 5%

### **Basil Hydroglycerin Extract**

(INCI: Water, Glycerin, Ocimum basilicum leaf extract, Citric acid, Sodium benzoate, Potassium sorbate)

Basil extract obtained by filtration after a long maceration of the plant in a blend of water and vegetable palm-free glycerin.

Recommended usage level: 1 - 5%

### **Bilberry Hydroglycerin Extract**

(INCI: Water, Glycerin, Vaccinium myrtillus fruit extract, Citric acid, Sodium benzoate, Potassium sorbate)

Bilberry extract obtained by filtration after a long maceration of the plant in a blend of water and vegetable palm-free glycerin.

Recommended usage level: 1 - 5%

### **Bitter Orange Hydroglycerin Extract**

(INCI: Water, Glycerin, Citrus aurantium amara flower extract, Citric acid, Sodium benzoate, Potassium sorbate)

Bitter Orange extract obtained by filtration after a long maceration of the plant in a blend of water and vegetable palm-free glycerin.

Recommended usage level: 1 - 5%

### **Arnica Hydroglycerin Extract**

(INCI: Water, Glycerin, Arnica montana flower extract, Citric acid, Sodium benzoate, Potassium sorbate)

Arnica extract obtained by filtration after a long maceration of the plant in a blend of water and vegetable palm-free glycerin.

Recommended usage level: 1 - 5%

### **Balm Hydroglycerin Extract**

(INCI: Water, Glycerin, Melissa officinalis leaf extract, Citric acid, Sodium benzoate, Potassium sorbate)

Balm extract obtained by filtration after a long maceration of the plant in a blend of water and vegetable palm-free glycerin.

Recommended usage level: 1 - 5%

### **Bearberry Hydroglycerin Extract**

(INCI: Water, Glycerin, Arctostaphylos uva ursi leaf extract, Citric acid, Sodium benzoate, Potassium sorbate)

Bearberry extract obtained by filtration after a long maceration of the plant in a blend of water and vegetable palm-free glycerin.

Recommended usage level: 1 - 5%

### **Birch Bark Hydroglycerin Extract**

(INCI: Water, Glycerin, Betula alba bark extract, Citric acid, Sodium benzoate, Potassium sorbate)

Birch Bark extract obtained by filtration after a long maceration of the plant in a blend of water and vegetable palm-free glycerin.

Recommended usage level: 1 - 5%

### **Black Tea Hydroglycerin Extract**

(INCI: Water, Glycerin, Camellia sinensis leaf extract, Citric acid, Sodium benzoate, Potassium sorbate)

Black Tea extract obtained by filtration after a long maceration of the plant in a blend of water and vegetable palm-free glycerin.

Recommended usage level: 1 - 5%

### **Blackberry Hydroglycerin Extract**

(INCI: Water, Glycerin, Rubus fruticosus fruit extract, Citric acid, Sodium benzoate, Potassium sorbate)

Blackberry extract obtained by filtration after a long maceration of the plant in a blend of water and vegetable palm-free glycerin.

Recommended usage level: 1 - 5%

### **Calendula Hydroglycerin Extract**

(INCI: Water, Glycerin, Calendula Officinalis Flower extract, Citric acid, Sodium benzoate, Potassium sorbate)

Calendula extract obtained by filtration after a long maceration of the plant in a blend of water and vegetable palm-free glycerin.

Recommended usage level: 1 - 5%

### **Carrot Hydroglycerin Extract**

(INCI: Water, Glycerin, Daucus carota sativa root extract, Citric acid, Sodium benzoate, Potassium sorbate)

Carrot extract obtained by filtration after a long maceration of the plant in a blend of water and vegetable palm-free glycerin.

Recommended usage level: 1 - 5%

### **Cherry Hydroglycerin Extract**

(INCI: Water, Glycerin, Prunus cerasus fruit extract, Citric acid, Sodium benzoate, Potassium sorbate)

Cherry extract obtained by filtration after a long maceration of the plant in a blend of water and vegetable palm-free glycerin.

Recommended usage level: 1 - 5%

### **Cinnamon Hydroglycerin Extract**

(INCI: Water, Glycerin, Cinnamomum zeylanicum bark extract, Citric acid, Sodium benzoate, Potassium sorbate)

Cinnamon extract obtained by filtration after a long maceration of the plant in a blend of water and vegetable palm-free glycerin.

Recommended usage level: 1 - 5%

### **Burdock Hydroglycerin Extract**

(INCI: Water, Glycerin, Arctium majus root extract, Citric acid, Sodium benzoate, Potassium sorbate)

Burdock extract obtained by filtration after a long maceration of the plant in a blend of water and vegetable palm-free glycerin.

Recommended usage level: 1 - 5%

### **Capsicum Hydroglycerin Extract**

(INCI: Water, Glycerin, Capsicum annuum fruit extract, Citric acid, Sodium benzoate, Potassium sorbate)

Capsicum extract obtained by filtration after a long maceration of the plant in a blend of water and vegetable palm-free glycerin.

Recommended usage level: 1 - 5%

### **Centella Asiatica Hydroglycerin Extract**

(INCI: Water, Glycerin, Centella asiatica extract, Citric acid, Sodium benzoate, Potassium sorbate)

Centella Asiatica extract obtained by filtration after a long maceration of the plant in a blend of water and vegetable palm-free glycerin.

Recommended usage level: 1 - 5%

### **Cherry Stalk Hydroglycerin Extract**

(INCI: Water, Glycerin, Prunus cerasus stalk extract, Citric acid, Sodium benzoate, Potassium sorbate)

Cherry stalk extract obtained by filtration after a long maceration of the plant in a blend of water and vegetable palm-free glycerin.

Recommended usage level: 1 - 5%

### **Coconut Hydroglycerin Extract**

(INCI: Water, Glycerin, Cocos nucifera fruit extract, Citric acid, Sodium benzoate, Potassium sorbate)

Coconut extract obtained by filtration after a long maceration of the plant in a blend of water and vegetable palm-free glycerin.

Recommended usage level: 1 - 5%

## Coltsfoot Hydroglycerin Extract

(INCI: Water, Glycerin, Tussilago farfara leaf extract, Citric acid, Sodium benzoate, Potassium sorbate)

Coltsfoot extract obtained by filtration after a long maceration of the plant in a blend of water and vegetable palm-free glycerin.

Recommended usage level: 1 - 5%

## Cornflower Hydroglycerin Extract

(INCI: Water, Glycerin, Centaurea cyanus flower extract, Citric acid, Sodium benzoate, Potassium sorbate)

Cornflower extract obtained by filtration after a long maceration of the plant in a blend of water and vegetable palm-free glycerin.

Recommended usage level: 1 - 5%

## Cranberry Hydroglycerin Extract

(INCI: Water, Glycerin, Vaccinium macrocarpon fruit extract, Citric acid, Sodium benzoate, Potassium sorbate)

Cranberry extract obtained by filtration after a long maceration of the plant in a blend of water and vegetable palm-free glycerin.

Recommended usage level: 1 - 5%

## Curcuma Hydroglycerin Extract

(INCI: Water, Glycerin, Curcuma longa root extract, Citric acid, Sodium benzoate, Potassium sorbate)

Curcuma extract obtained by filtration after a long maceration of the plant in a blend of water and vegetable palm-free glycerin.

Recommended usage level: 1 - 5%

## Devil's Apron Hydroglycerin Extract

(INCI: Water, Glycerin, Laminaria digitata extract, Citric acid, Sodium benzoate, Potassium sorbate)

Devil's Apron extract obtained by filtration after a long maceration of the plant in a blend of water and vegetable palm-free glycerin.

Recommended usage level: 1 - 5%

## Comfrey Hydroglycerin Extract

(INCI: Water, Glycerin, Symphytum officinale leaf extract, Citric acid, Sodium benzoate, Potassium sorbate)

Comfrey extract obtained by filtration after a long maceration of the plant in a blend of water and vegetable palm-free glycerin.

Recommended usage level: 1 - 5%

## Cotton Hydroglycerin Extract

(INCI: Water, Glycerin, Gossypium herbaceum extract, Citric acid, Sodium benzoate, Potassium sorbate)

Cotton extract obtained by filtration after a long maceration of the plant in a blend of water and vegetable palm-free glycerin.

Recommended usage level: 1 - 5%

## Cucumber Hydroglycerin Extract

(INCI: Water, Glycerin, Cucumis sativus fruit extract, Citric acid, Sodium benzoate, Potassium sorbate)

Cucumber extract obtained by filtration after a long maceration of the plant in a blend of water and vegetable palm-free glycerin.

Recommended usage level: 1 - 5%

## Date Hydroglycerin Extract

(INCI: Water, Glycerin, Phoenix dactylifera fruit extract, Citric acid, Sodium benzoate, Potassium sorbate)

Date extract obtained by filtration after a long maceration of the plant in a blend of water and vegetable palm-free glycerin.

Recommended usage level: 1 - 5%

## Devil's Claw Hydroglycerin Extract

(INCI: Water, Glycerin, Harpagophytum procumbens root extract, Citric acid, Sodium benzoate, Potassium sorbate)

Devil's Claw extract obtained by filtration after a long maceration of the plant in a blend of water and vegetable palm-free glycerin.

Recommended usage level: 1 - 5%

### Echinacea Hydroglycerin Extract

(INCI: Water, Glycerin, Echinacea purpurea root extract, Citric acid, Sodium benzoate, Potassium sorbate)

Echinacea extract obtained by filtration after a long maceration of the plant in a blend of water and vegetable palm-free glycerin.

Recommended usage level: 1 - 5%

### Eucalyptus Hydroglycerin Extract

(INCI: Water, Glycerin, Eucalyptus globulus leaf extract, Citric acid, Sodium benzoate, Potassium sorbate)

Eucalyptus extract obtained by filtration after a long maceration of the plant in a blend of water and vegetable palm-free glycerin.

Recommended usage level: 1 - 5%

### Fig Hydroglycerin Extract

(INCI: Water, Glycerin, Ficus carica fruit extract, Citric acid, Sodium benzoate, Potassium sorbate)

Fig extract obtained by filtration after a long maceration of the plant in a blend of water and vegetable palm-free glycerin.

Recommended usage level: 1 - 5%

### Gentian Hydroglycerin Extract

(INCI: Water, Glycerin, Gentiana lutea root extract, Citric acid, Sodium benzoate, Potassium sorbate)

Gentian extract obtained by filtration after a long maceration of the plant in a blend of water and vegetable palm-free glycerin.

Recommended usage level: 1 - 5%

### Elder Hydroglycerin Extract

(INCI: Water, Glycerin, Sambucus nigra berry extract, Citric acid, Sodium benzoate, Potassium sorbate)

Elder extract obtained by filtration after a long maceration of the plant in a blend of water and vegetable palm-free glycerin.

Recommended usage level: 1 - 5%

### Fennel Hydroglycerin Extract

(INCI: Water, Glycerin, Foeniculum vulgare root extract, Citric acid, Sodium benzoate, Potassium sorbate)

Fennel extract obtained by filtration after a long maceration of the plant in a blend of water and vegetable palm-free glycerin.

Recommended usage level: 1 - 5%

### Frangipany Hydroglycerin Extract

(INCI: Water, Glycerin, Plumeria alba flower extract, Citric acid, Sodium benzoate, Potassium sorbate)

Frangipany extract obtained by filtration after a long maceration of the plant in a blend of water and vegetable palm-free glycerin.

Recommended usage level: 1 - 5%

### German Chamomile Hydroglycerin Extract

(INCI: Water, Glycerin, Chamomilla recutita Flower extract, Citric acid, Sodium benzoate, Potassium sorbate)

German Chamomile extract obtained by filtration after a long maceration of the plant in a blend of water and vegetable palm-free glycerin.

Recommended usage level: 1 - 5%

### **Ginger Hydroglycerin Extract**

(INCI: Water, Glycerin, Zingiber officinale root extract, Citric acid, Sodium benzoate, Potassium sorbate)

Ginger extract obtained by filtration after a long maceration of the plant in a blend of water and vegetable palm-free glycerin.

Recommended usage level: 1 - 5%

### **Ginseng Hydroglycerin Extract**

(INCI: Water, Glycerin, Panax ginseng root extract, Citric acid, Sodium benzoate, Potassium sorbate)

Ginseng extract obtained by filtration after a long maceration of the plant in a blend of water and vegetable palm-free glycerin.

Recommended usage level: 1 - 5%

### **Grape (Fruit) Hydroglycerin Extract**

(INCI: Water, Glycerin, Vitis vinifera fruit extract, Citric acid, Sodium benzoate, Potassium sorbate)

Grape (fruit) extract obtained by filtration after a long maceration of the plant in a blend of water and vegetable palm-free glycerin.

Recommended usage level: 1 - 5%

### **Green Coffee Hydroglycerin Extract**

(INCI: Water, Glycerin, Coffea arabica seed extract, Citric acid, Sodium benzoate, Potassium sorbate)

Green Coffee extract obtained by filtration after a long maceration of the plant in a blend of water and vegetable palm-free glycerin.

Recommended usage level: 1 - 5%

### **Guarana Hydroglycerin Extract**

(INCI: Water, Glycerin, Paullinia cupana seed extract, Citric acid, Sodium benzoate, Potassium sorbate)

Guarana extract obtained by filtration after a long maceration of the plant in a blend of water and vegetable palm-free glycerin.

Recommended usage level: 1 - 5%

### **Ginkgo Biloba Hydroglycerin Extract**

(INCI: Water, Glycerin, Ginkgo biloba leaf extract, Citric acid, Sodium benzoate, Potassium sorbate)

Ginkgo Biloba extract obtained by filtration after a long maceration of the plant in a blend of water and vegetable palm-free glycerin.

Recommended usage level: 1 - 5%

### **Goji Hydroglycerin Extract**

(INCI: Water, Glycerin, Lycium barbarum fruit extract, Citric acid, Sodium benzoate, Potassium sorbate)

Goji extract obtained by filtration after a long maceration of the plant in a blend of water and vegetable palm-free glycerin.

Recommended usage level: 1 - 5%

### **Grape (Seed) Hydroglycerin Extract**

(INCI: Water, Glycerin, Vitis vinifera seed extract, Citric acid, Sodium benzoate, Potassium sorbate)

Grape (seed) extract obtained by filtration after a long maceration of the plant in a blend of water and vegetable palm-free glycerin.

Recommended usage level: 1 - 5%

### **Green Tea Hydroglycerin Extract**

(INCI: Water, Glycerin, Camellia sinensis leaf extract, Citric acid, Sodium benzoate, Potassium sorbate)

Green Tea extract obtained by filtration after a long maceration of the plant in a blend of water and vegetable palm-free glycerin.

Recommended usage level: 1 - 5%

### **Henna Hydroglycerin Extract**

(INCI: Water, Glycerin, Lawsonia inermis leaf extract, Citric acid, Sodium benzoate, Potassium sorbate)

Henna extract obtained by filtration after a long maceration of the plant in a blend of water and vegetable palm-free glycerin.

Recommended usage level: 1 - 5%

## Honey Hydroglycerin Extract

(INCI: Water, Glycerin, Mel extract, Citric acid, Sodium benzoate, Potassium sorbate)

Honey extract obtained by filtration after a long maceration of the plant in a blend of water and vegetable palm-free glycerin.

Recommended usage level: 1 - 5%

## Hops Hydroglycerin Extract

(INCI: Water, Glycerin, Humulus lupulus extract, Citric acid, Sodium benzoate, Potassium sorbate)

Hops extract obtained by filtration after a long maceration of the plant in a blend of water and vegetable palm-free glycerin.

Recommended usage level: 1 - 5%

## Horseradish Hydroglycerin Extract

(INCI: Water, Glycerin, Raphanus sativus root extract, Citric acid, Sodium benzoate, Potassium sorbate)

Horseradish extract obtained by filtration after a long maceration of the plant in a blend of water and vegetable palm-free glycerin.

Recommended usage level: 1 - 5%

## Iris (Oris) Hydroglycerin Extract

(INCI: Water, Glycerin, Iris florentina root extract, Citric acid, Sodium benzoate, Potassium sorbate)

Iris (Oris) extract obtained by filtration after a long maceration of the plant in a blend of water and vegetable palm-free glycerin.

Recommended usage level: 1 - 5%

## Knotweed Hydroglycerin Extract

(INCI: Water, Glycerin, Polygonum aviculare extract, Citric acid, Sodium benzoate, Potassium sorbate)

Knotweed extract obtained by filtration after a long maceration of the plant in a blend of water and vegetable palm-free glycerin.

Recommended usage level: 1 - 5%

## Honeysuckle Hydroglycerin Extract

(INCI: Water, Glycerin, Lonicera caprifolium extract, Citric acid, Sodium benzoate, Potassium sorbate)

Honeysuckle extract obtained by filtration after a long maceration of the plant in a blend of water and vegetable palm-free glycerin.

Recommended usage level: 1 - 5%

## Horsechestnut Hydroglycerin Extract

(INCI: Water, Glycerin, Aesculus hippocastanum seed extract, Citric acid, Sodium benzoate, Potassium sorbate)

Horsechestnut extract obtained by filtration after a long maceration of the plant in a blend of water and vegetable palm-free glycerin.

Recommended usage level: 1 - 5%

## Incense Hydroglycerin Extract

(INCI: Water, Glycerin, Boswellia carterii resin extract, Citric acid, Sodium benzoate, Potassium sorbate)

Incense extract obtained by filtration after a long maceration of the plant in a blend of water and vegetable palm-free glycerin.

Recommended usage level: 1 - 5%

## Jasmine Hydroglycerin Extract

(INCI: Water, Glycerin, Jasminum officinale flower extract, Citric acid, Sodium benzoate, Potassium sorbate)

Jasmine extract obtained by filtration after a long maceration of the plant in a blend of water and vegetable palm-free glycerin.

Recommended usage level: 1 - 5%

## Lemon Hydroglycerin Extract

(INCI: Water, Glycerin, Citrus limon fruit extract, Citric acid, Sodium benzoate, Potassium sorbate)

Lemon extract obtained by filtration after a long maceration of the plant in a blend of water and vegetable palm-free glycerin.

Recommended usage level: 1 - 5%

### Licorice Hydroglycerin Extract

(INCI: Water, Glycerin, Glycyrrhiza glabra root extract, Citric acid, Sodium benzoate, Potassium sorbate)

Licorice extract obtained by filtration after a long maceration of the plant in a blend of water and vegetable palm-free glycerin.

Recommended usage level: 1 - 5%

### Litchi Hydroglycerin Extract

(INCI: Water, Glycerin, Litchi chinensis fruit extract, Citric acid, Sodium benzoate, Potassium sorbate)

Litchi extract obtained by filtration after a long maceration of the plant in a blend of water and vegetable palm-free glycerin.

Recommended usage level: 1 - 5%

### Mango Hydroglycerin Extract

(INCI: Water, Glycerin, Mangifera indica fruit extract, Citric acid, Sodium benzoate, Potassium sorbate)

Mango extract obtained by filtration after a long maceration of the plant in a blend of water and vegetable palm-free glycerin.

Recommended usage level: 1 - 5%

### Mate Hydroglycerin Extract

(INCI: Water, Glycerin, Ilex paraguariensis leaf extract, Citric acid, Sodium benzoate, Potassium sorbate)

Mate extract obtained by filtration after a long maceration of the plant in a blend of water and vegetable palm-free glycerin.

Recommended usage level: 1 - 5%

### Melon Hydroglycerin Extract

(INCI: Water, Glycerin, Cucumis melo fruit extract, Citric acid, Sodium benzoate, Potassium sorbate)

Melon extract obtained by filtration after a long maceration of the plant in a blend of water and vegetable palm-free glycerin.

Recommended usage level: 1 - 5%

### Linseed (Flax) Hydroglycerin Extract

(INCI: Water, Glycerin, Linum usitatissimum seed extract, Citric acid, Sodium benzoate, Potassium sorbate)

Linseed (Flax) extract obtained by filtration after a long maceration of the plant in a blend of water and vegetable palm-free glycerin.

Recommended usage level: 1 - 5%

### Mallow Flower Hydroglycerin Extract

(INCI: Water, Glycerin, Malva sylvestris flower extract, Citric acid, Sodium benzoate, Potassium sorbate)

Mallow Flower extract obtained by filtration after a long maceration of the plant in a blend of water and vegetable palm-free glycerin.

Recommended usage level: 1 - 5%

### Marjoram Hydroglycerin Extract

(INCI: Water, Glycerin, Origanum marjorana leaf extract, Citric acid, Sodium benzoate, Potassium sorbate)

Marjoram extract obtained by filtration after a long maceration of the plant in a blend of water and vegetable palm-free glycerin.

Recommended usage level: 1 - 5%

### Melilot Hydroglycerin Extract

(INCI: Water, Glycerin, Melilotus officinalis extract, Citric acid, Sodium benzoate, Potassium sorbate)

Melilot extract obtained by filtration after a long maceration of the plant in a blend of water and vegetable palm-free glycerin.

Recommended usage level: 1 - 5%

### Milk Thistle Hydroglycerin Extract

(INCI: Water, Glycerin, Sylibum marianum extract, Citric acid, Sodium benzoate, Potassium sorbate)

Milk Thistle extract obtained by filtration after a long maceration of the plant in a blend of water and vegetable palm-free glycerin.

Recommended usage level: 1 - 5%

### Mimosa Hydroglycerin Extract

(INCI: Water, Glycerin, Mimosa Tenuiflora leaf extract, Citric acid, Sodium benzoate, Potassium sorbate)

Mimosa extract obtained by filtration after a long maceration of the plant in a blend of water and vegetable palm-free glycerin.

Recommended usage level: 1 - 5%

### Mugwort Hydroglycerin Extract

(INCI: Water, Glycerin, Artemisia vulgaris extract, Citric acid, Sodium benzoate, Potassium sorbate)

Mugwort extract obtained by filtration after a long maceration of the plant in a blend of water and vegetable palm-free glycerin.

Recommended usage level: 1 - 5%

### Myrrh Hydroglycerin Extract

(INCI: Water, Glycerin, Commiphora abyssinica resin extract, Citric acid, Sodium benzoate, Potassium sorbate)

Myrrh extract obtained by filtration after a long maceration of the plant in a blend of water and vegetable palm-free glycerin.

Recommended usage level: 1 - 5%

### Norway Pine Hydroglycerin Extract

(INCI: Water, Glycerin, Pinus sylvestris bud extract, Citric acid, Sodium benzoate, Potassium sorbate)

Norway Pine extract obtained by filtration after a long maceration of the plant in a blend of water and vegetable palm-free glycerin.

Recommended usage level: 1 - 5%

### Olive Tree Hydroglycerin Extract

(INCI: Water, Glycerin, Olea europaea leaf extract, Citric acid, Sodium benzoate, Potassium sorbate)

Olive Tree extract obtained by filtration after a long maceration of the plant in a blend of water and vegetable palm-free glycerin.

Recommended usage level: 1 - 5%

### Moringa Hydroglycerin Extract

(INCI: Water, Glycerin, Moringa oleifera leaf extract, Citric acid, Sodium benzoate, Potassium sorbate)

Moringa extract obtained by filtration after a long maceration of the plant in a blend of water and vegetable palm-free glycerin.

Recommended usage level: 1 - 5%

### Mulberry Hydroglycerin Extract

(INCI: Water, Glycerin, Morus alba leaf extract, Citric acid, Sodium benzoate, Potassium sorbate)

Mulberry extract obtained by filtration after a long maceration of the plant in a blend of water and vegetable palm-free glycerin.

Recommended usage level: 1 - 5%

### Neem Hydroglycerin Extract

(INCI: Water, Glycerin, Melia azadirachta leaf extract, Citric acid, Sodium benzoate, Potassium sorbate)

Neem extract obtained by filtration after a long maceration of the plant in a blend of water and vegetable palm-free glycerin.

Recommended usage level: 1 - 5%

### Oat Hydroglycerin Extract

(INCI: Water, Glycerin, Avena sativa kernel extract, Citric acid, Sodium benzoate, Potassium sorbate)

Oat extract obtained by filtration after a long maceration of the plant in a blend of water and vegetable palm-free glycerin.

Recommended usage level: 1 - 5%

### Onion Hydroglycerin Extract

(INCI: Water, Glycerin, Allium cepa bulb extract, Citric acid, Sodium benzoate, Potassium sorbate)

Onion extract obtained by filtration after a long maceration of the plant in a blend of water and vegetable palm-free glycerin.

Recommended usage level: 1 - 5%

## Orange (sweet) Hydroglycerin Extract

(INCI: Water, Glycerin, Citrus aurantium dulcis fruit extract, Citric acid, Sodium benzoate, Potassium sorbate)

Orange (sweet) extract obtained by filtration after a long maceration of the plant in a blend of water and vegetable palm-free glycerin.

Recommended usage level: 1 - 5%

## Papaya Hydroglycerin Extract

(INCI: Water, Glycerin, Carica papaya fruit extract, Citric acid, Sodium benzoate, Potassium sorbate)

Papaya extract obtained by filtration after a long maceration of the plant in a blend of water and vegetable palm-free glycerin.

Recommended usage level: 1 - 5%

## Passionflower Hydroglycerin Extract

(INCI: Water, Glycerin, Passiflora incarnata extract, Citric acid, Sodium benzoate, Potassium sorbate)

Passionflower extract obtained by filtration after a long maceration of the plant in a blend of water and vegetable palm-free glycerin.

Recommended usage level: 1 - 5%

## Pear Hydroglycerin Extract

(INCI: Water, Glycerin, Pyrus communis fruit extract, Citric acid, Sodium benzoate, Potassium sorbate)

Pear extract obtained by filtration after a long maceration of the plant in a blend of water and vegetable palm-free glycerin.

Recommended usage level: 1 - 5%

## Panama Wood Hydroglycerin Extract

(INCI: Water, Glycerin, Quillaja saponaria wood extract, Citric acid, Sodium benzoate, Potassium sorbate)

Panama Wood extract obtained by filtration after a long maceration of the plant in a blend of water and vegetable palm-free glycerin.

Recommended usage level: 1 - 5%

## Parsley Hydroglycerin Extract

(INCI: Water, Glycerin, Petroselinum crispum leaf extract, Citric acid, Sodium benzoate, Potassium sorbate)

Parsley extract obtained by filtration after a long maceration of the plant in a blend of water and vegetable palm-free glycerin.

Recommended usage level: 1 - 5%

## Peach Hydroglycerin Extract

(INCI: Water, Glycerin, Prunus persica fruit extract, Citric acid, Sodium benzoate, Potassium sorbate)

Peach extract obtained by filtration after a long maceration of the plant in a blend of water and vegetable palm-free glycerin.

Recommended usage level: 1 - 5%

## Peppermint Hydroglycerin Extract

(INCI: Water, Glycerin, Mentha piperita leaf extract, Citric acid, Sodium benzoate, Potassium sorbate)

Peppermint extract obtained by filtration after a long maceration of the plant in a blend of water and vegetable palm-free glycerin.

Recommended usage level: 1 - 5%

## Pineapple Hydroglycerin Extract

(INCI: Water, Glycerin, Ananas sativus fruit extract, Citric acid, Sodium benzoate, Potassium sorbate)

Pineapple extract obtained by filtration after a long maceration of the plant in a blend of water and vegetable palm-free glycerin.

Recommended usage level: 1 - 5%

## Pomegranate Bark Hydroglycerin Extract

(INCI: Water, Glycerin, Punica granatum bark extract, Citric acid, Sodium benzoate, Potassium sorbate)

Pomegranate Bark extract obtained by filtration after a long maceration of the plant in a blend of water and vegetable palm-free glycerin.

Recommended usage level: 1 - 5%

## Pomegranate Hydroglycerin Extract

(INCI: Water, Glycerin, Punica granatum fruit extract, Citric acid, Sodium benzoate, Potassium sorbate)

Pomegranate extract obtained by filtration after a long maceration of the plant in a blend of water and vegetable palm-free glycerin.

Recommended usage level: 1 - 5%

## Prickly Pear Hydroglycerin Extract

(INCI: Water, Glycerin, Opuntia ficus-indica flower extract, Citric acid, Sodium benzoate, Potassium sorbate)

Prickly Pear extract obtained by filtration after a long maceration of the plant in a blend of water and vegetable palm-free glycerin.

Recommended usage level: 1 - 5%

## Propolis Hydroglycerin Extract

(INCI: Water, Glycerin, Propolis extract, Citric acid, Sodium benzoate, Potassium sorbate)

Propolis extract obtained by filtration after a long maceration of the plant in a blend of water and vegetable palm-free glycerin.

Recommended usage level: 1 - 5%

## Pumpkin Hydroglycerin Extract

(INCI: Water, Glycerin, Cucurbita pepo seed extract, Citric acid, Sodium benzoate, Potassium sorbate)

Pumpkin extract obtained by filtration after a long maceration of the plant in a blend of water and vegetable palm-free glycerin.

Recommended usage level: 1 - 5%

## Quinoa Hydroglycerin Extract

(INCI: Water, Glycerin, Chenopodium quinoa seed extract, Citric acid, Sodium benzoate, Potassium sorbate)

Quinoa extract obtained by filtration after a long maceration of the plant in a blend of water and vegetable palm-free glycerin.

Recommended usage level: 1 - 5%

## Raspberry Hydroglycerin Extract

(INCI: Water, Glycerin, Rubus idaeus fruit extract, Citric acid, Sodium benzoate, Potassium sorbate)

Raspberry extract obtained by filtration after a long maceration of the plant in a blend of water and vegetable palm-free glycerin.

Recommended usage level: 1 - 5%

## Roman Chamomile Hydroglycerin Extract

(INCI: Water, Glycerin, Anthemis nobilis flower extract, Citric acid, Sodium benzoate, Potassium sorbate)

Roman Chamomile extract obtained by filtration after a long maceration of the plant in a blend of water and vegetable palm-free glycerin.

Recommended usage level: 1 - 5%

## Rose Hydroglycerin Extract

(INCI: Water, Glycerin, Rosa centifolia flower extract, Citric acid, Sodium benzoate, Potassium sorbate)

Rose extract obtained by filtration after a long maceration of the plant in a blend of water and vegetable palm-free glycerin.

Recommended usage level: 1 - 5%

## Saffron Hydroglycerin Extract Food Grade

(INCI: Aqua, Glycerin, Crocus sativus stigma extract, Citric acid, Sodium benzoate, Potassium sorbate)

Saffron food grade extract obtained by filtration after a long maceration of the plant in a blend of water and vegetable palm-free glycerin.

Recommended usage level: 1 - 5%

## SAW PALMETTO EXTRACT GNB

(INCI: Glycerin, Water, Serenoa Serrulata Fruit Extract, Sodium Benzoate, Potassium Sorbate)

Saw palmetto is rich in sugar and high molecular weight polysaccharides, making it an ideal moisturiser and film former.

It's dual inhibitory effect on both arachidonic acid metabolic pathways provides anti-irritancy properties and the anti-androgenic activity makes saw palmetto extract useful in formulating cosmetic products to treat androgenic alopecia and cosmetic products for greasy skin and hair.

Recommended usage level: 0.5 – 5%

## Rose Hip Hydroglycerin Extract

(INCI: Water, Glycerin, Rosa canina fruit extract, Citric acid, Sodium benzoate, Potassium sorbate)

Rose Hip extract obtained by filtration after a long maceration of the plant in a blend of water and vegetable palm-free glycerin.

Recommended usage level: 1 - 5%

## Rosemary Hydroglycerin Extract

(INCI: Water, Glycerin, Rosmarinus officinalis leaf extract, Citric acid, Sodium benzoate, Potassium sorbate)

Rosemary extract obtained by filtration after a long maceration of the plant in a blend of water and vegetable palm-free glycerin.

Recommended usage level: 1 - 5%

## Sage Hydroglycerin Extract

(INCI: Water, Glycerin, Salvia officinalis leaf extract, Citric acid, Sodium benzoate, Potassium sorbate)

Sage extract obtained by filtration after a long maceration of the plant in a blend of water and vegetable palm-free glycerin.

Recommended usage level: 1 - 5%

## Saw Palmetto Hydroglycerin Extract

(INCI: Water, Glycerin, Serenoa serrulata fruit extract, Citric acid, Sodium benzoate, Potassium sorbate)

Saw Palmetto extract obtained by filtration after a long maceration of the plant in a blend of water and vegetable palm-free glycerin.

Recommended usage level: 1 - 5%

## Seaweed Hydroglycerin Extract

(INCI: Water, Glycerin, Fucus vesiculosus extract, Citric acid, Sodium benzoate, Potassium sorbate)

Seaweed extract obtained by filtration after a long maceration of the plant in a blend of water and vegetable palm-free glycerin.

Recommended usage level: 1 - 5%

## Sophora Japonica Hydroglycerin Extract

(INCI: Water, Glycerin, Sophora japonica flower extract, Citric acid, Sodium benzoate, Potassium sorbate)

Sophora Japonica extract obtained by filtration after a long maceration of the plant in a blend of water and vegetable palm-free glycerin.

Recommended usage level: 1 - 5%

## Spirulina Hydroglycerin Extract

(INCI: Water, Glycerin, Spirulina maxima extract, Citric acid, Sodium benzoate, Potassium sorbate)

Spirulina extract obtained by filtration after a long maceration of the plant in a blend of water and vegetable palm-free glycerin.

Recommended usage level: 1 - 5%

## Stinging Nettle Hydroglycerin Extract

(INCI: Water, Glycerin, Urtica dioica root extract, Citric acid, Sodium benzoate, Potassium sorbate)

Stinging Nettle extract obtained by filtration after a long maceration of the plant in a blend of water and vegetable palm-free glycerin.

Recommended usage level: 1 - 5%

## Soapwort Hydroglycerin Extract

(INCI: Water, Glycerin, Saponaria officinalis leaf/root extract, Citric acid, Sodium benzoate, Potassium sorbate)

Soapwort extract obtained by filtration after a long maceration of the plant in a blend of water and vegetable palm-free glycerin.

Recommended usage level: 1 - 5%

## Spinach Japonica Hydroglycerin Extract

(INCI: Water, Glycerin, Spinacia oleacera leaf extract, Citric acid, Sodium benzoate, Potassium sorbate)

Spinach extract obtained by filtration after a long maceration of the plant in a blend of water and vegetable palm-free glycerin.

Recommended usage level: 1 - 5%

## St. John's Hydroglycerin Extract

(INCI: Water, Glycerin, Hypericum perforatum flower extract, Citric acid, Sodium benzoate, Potassium sorbate)

St. John's extract obtained by filtration after a long maceration of the plant in a blend of water and vegetable palm-free glycerin.

Recommended usage level: 1 - 5%

## Stinging Nettle Leaf Hydroglycerin Extract

(INCI: Water, Glycerin, Urtica dioica leaf extract, Citric acid, Sodium benzoate, Potassium sorbate)

Stinging Nettle Leaf extract obtained by filtration after a long maceration of the plant in a blend of water and vegetable palm-free glycerin.

Recommended usage level: 1 - 5%

## Strawberry Hydroglycerin Extract

(INCI: Water, Glycerin, Fragaria vesca fruit extract, Citric acid, Sodium benzoate, Potassium sorbate)

Strawberry extract obtained by filtration after a long maceration of the plant in a blend of water and vegetable palm-free glycerin.

Recommended usage level: 1 - 5%

## Tomato Hydroglycerin Extract

(INCI: Water, Glycerin, Solanum lycopersicum fruit extract, Citric acid, Sodium benzoate, Potassium sorbate)

Tomato extract obtained by filtration after a long maceration of the plant in a blend of water and vegetable palm-free glycerin.

Recommended usage level: 1 - 5%

## Verbena Hydroglycerin Extract

(INCI: Water, Glycerin, Lippia citriodora leaf extract, Citric acid, Sodium benzoate, Potassium sorbate)

Verbena extract obtained by filtration after a long maceration of the plant in a blend of water and vegetable palm-free glycerin.

Recommended usage level: 1 - 5%

## Watermelon Hydroglycerin Extract

(INCI: Water, Glycerin, Citrullus lanatus fruit extract, Citric acid, Sodium benzoate, Potassium sorbate)

Watermelon extract obtained by filtration after a long maceration of the plant in a blend of water and vegetable palm-free glycerin.

Recommended usage level: 1 - 5%

## Suagarcane Hydroglycerin Extract

(INCI: Water, Glycerin, Saccharum officinarum extract, Citric acid, Sodium benzoate, Potassium sorbate)

Sugarcane extract obtained by filtration after a long maceration of the plant in a blend of water and vegetable palm-free glycerin.

Recommended usage level: 1 - 5%

## Tropical Orchid Hydroglycerin Extract

(INCI: Water, Glycerin, Dendrobium phalaenopsis flower extract, Citric acid, Sodium benzoate, Potassium sorbate)

Tropical Orchid extract obtained by filtration after a long maceration of the plant in a blend of water and vegetable palm-free glycerin.

Recommended usage level: 1 - 5%

## Violet Hydroglycerin Extract

(INCI: Water, Glycerin, Viola odorata leaf extract, Citric acid, Sodium benzoate, Potassium sorbate)

Violet extract obtained by filtration after a long maceration of the plant in a blend of water and vegetable palm-free glycerin.

Recommended usage level: 1 - 5%

## Wheat Hydroglycerin Extract

(INCI: Water, Glycerin, Triticum vulgare seed extract, Citric acid, Sodium benzoate, Potassium sorbate)

Wheat extract obtained by filtration after a long maceration of the plant in a blend of water and vegetable palm-free glycerin.

Recommended usage level: 1 - 5%

## White Lily Flower Hydroglycerin Extract

(INCI: Water, Glycerin, Lilium candidum flower extract, Citric acid, Sodium benzoate, Potassium sorbate)

White Lily Flower extract obtained by filtration after a long maceration of the plant in a blend of water and vegetable palm-free glycerin.

Recommended usage level: 1 - 5%

## White Tea Hydroglycerin Extract

(INCI: Water, Glycerin, Camellia sinensis leaf extract, Citric acid, Sodium benzoate, Potassium sorbate)

White Tea extract obtained by filtration after a long maceration of the plant in a blend of water and vegetable palm-free glycerin.

Recommended usage level: 1 - 5%

## Willow Bark Hydroglycerin Extract

(INCI: Water, Glycerin, Salix alba bark extract, Citric acid, Sodium benzoate, Potassium sorbate)

Willow Bark extract obtained by filtration after a long maceration of the plant in a blend of water and vegetable palm-free glycerin.

Recommended usage level: 1 - 5%

## Witch Hazel Hydroglycerin Extract

(INCI: Water, Glycerin, Hamamelis virginiana leaf extract, Citric acid, Sodium benzoate, Potassium sorbate)

Witch Hazel extract obtained by filtration after a long maceration of the plant in a blend of water and vegetable palm-free glycerin.

Recommended usage level: 1 - 5%

## Yarrow Hydroglycerin Extract

(INCI: Water, Glycerin, Achillea millefolium flower extract, Citric acid, Sodium benzoate, Potassium sorbate)

Yarrow extract obtained by filtration after a long maceration of the plant in a blend of water and vegetable palm-free glycerin.

Recommended usage level: 1 - 5%

## Natural Dyes

### Alder Buckthorn Dye Extract

(INCI: Frangula alnus bark extract, Maltodextrin)

Orange soluble dye plant extract recommended for skin care and Personal Care applications.

Recommended usage level: Aqueous and transparent formulations: 0.1 - 0.5%; Emulsions: 1 - 3%

### Coreopsis Dye Extract

(INCI: Coreopsis tinctoria flower/leaf/stem extract, Maltodextrin)

Yellow soluble dye plant extract recommended for skin care and Personal Care applications.

Recommended usage level: Aqueous and transparent formulations: 0.1 - 0.5%; Emulsions: 1 - 3%

### Dyer's Sorghum Dye Extract

(INCI: Sorghum bicolor leaf/stem extract, Maltodextrin)

Pink/ Red soluble dye plant extract recommended for skin care and Personal Care applications.

Recommended usage level: Aqueous and transparent formulations: 0.1 - 0.5%; Emulsions: 1 - 3%

### Annato Dye Extract

(INCI: Maltodextrin, Annatto / CI 75120 / E160b, Potassium hydroxide)

Orange soluble dye plant extract recommended for skin care and Personal Care applications.

Recommended usage level: Aqueous and transparent formulations: 0.1 - 0.5%; Emulsions: 1 - 3%

### Cutch Dye Extract - Hair

(INCI: Acacia catechu wood extract, Maltodextrin)

Beige/ Brown soluble dye plant extract recommended for hair care applications.

Recommended usage level: 1 - 5%

### Genipa Dye Extract

(INCI: Genipa americana fruit extract, Maltodextrin, Potassium Sorbate)

Blue soluble dye plant extract recommended for skin care and Personal Care applications.

Recommended usage level: Aqueous and transparent formulations: 0.1 - 0.5%; Emulsions: 1 - 3%

## Golden Rod Dye Extract

(INCI: Solidago virgaurea extract, Maltodextrin)

Yellow soluble dye plant extract recommended for skin care and Personal Care applications.

Recommended usage level: Aqueous and transparent formulations: 0.1 - 0.5%; Emulsions: 1 - 3%

## Lucerne's Chlorophyll Dye Extract

(INCI: E141(ii) / CI 75810)

Green soluble dye plant extract recommended for skin care and Personal Care applications.

Recommended usage level: Aqueous and transparent formulations: 0.1 - 0.5%; Emulsions: 1 - 3%

## Madder Rich Dye Extract

(INCI: Rubia tinctorum root extract, Maltodextrin)

Orange soluble dye plant extract recommended for skin care and Personal Care applications.

Recommended usage level: Aqueous and transparent formulations: 0.1 - 0.5%; Emulsions: 1 - 3%

## Sappanwood Dye Extract

(INCI: Caesalpinia sappan bark extract, Maltodextrin)

Orange/ Red soluble dye plant extract recommended for skin care and Personal Care applications.

Recommended usage level: Aqueous and transparent formulations: 0.1 - 0.5%; Emulsions: 1 - 3%

## KERARICE™ GNSB

(INCI: Aqua, Glycerin, Hydrolyzed Rice Protein, Phytic Acid, Oryza Sativa (Rice) Extract, Pentylene glycol, Levulinic Acid, Glyceryl Caprylate)

KERARICE™ GNSB protects and enhances the hair's natural or dyed colour from damage caused by solar radiation, decreasing colour fading in any hair type, even in the most damaged.

It reduces the breakdown of tryptophan, protecting the keratin and the peroxidation of lipids present in the hair fiber, whilst repairing the internal structure and protecting keratin for strong, shiny and smooth hair.

Recommended usage level: 0.5 - 5%

## Madder Dye Extract

(INCI: Rubia tinctorum root extract, Maltodextrin)

Yellow/ Orange soluble dye plant extract recommended for skin care and Personal Care applications.

Recommended usage level: Aqueous and transparent formulations: 0.1 - 0.5%; Emulsions: 1 - 3%

## Reseda Dye Extract

(INCI: Reseda Luteola extract, Maltodextrin)

Yellow soluble dye plant extract recommended for skin care and Personal Care applications.

Recommended usage level: Aqueous and transparent formulations: 0.1 - 0.5%; Emulsions: 1 - 3%



## Natural Hair Dyes

### Alder Buckthorn Dye Extract - Hair

(INCI: Frangula alnus bark extract, Maltodextrin)

Dark Yellow soluble dye plant extract recommended for hair care applications.

Recommended usage level: 1 - 5%

### Coreopsis Dye Extract - Hair

(INCI: Coreopsis tinctoria flower/leaf/stem extract, Maltodextrin)

Golden Yellow soluble dye plant extract recommended for hair care applications.

Recommended usage level: 1 - 5%

### Golden Rod Dye Extract - Hair

(INCI: Solidago virgaurea extract, Maltodextrin)

Yellow soluble dye plant extract recommended for hair care applications.

Recommended usage level: 1 - 5%

### Indigo Micronized Leaves Dye Extract - Hair

(INCI: Indigofera tinctoria leaf powder, Maltodextrin)

Blue/ Black soluble dye plant extract recommended for hair care applications.

Recommended usage level: 1 - 5%

### Chestnut Dye Extract - Hair

(INCI: Castanea sativa extract, Maltodextrin)

Beige/ Brown soluble dye plant extract recommended for hair care applications.

Recommended usage level: 1 - 5%

### Dyer's Sorghum Dye Extract - Hair

(INCI: Sorghum bicolor leaf/stem extract, Maltodextrin)

Brown soluble dye plant extract recommended for hair care applications.

Recommended usage level: 1 - 5%

### Henna Dye Extract - Hair

(INCI: Lawsonia inermis, Maltodextrin, Lysine hydrochloride)

Brown soluble dye plant extract recommended for hair care applications.

Recommended usage level: 1 - 5%

### Logwood Dye Extract - Hair

(INCI: Haematoxylum campechianum wood extract, Maltodextrin)

Brown/ Purple soluble dye plant extract recommended for hair care applications.

Recommended usage level: 1 - 5%

## Lucerne's Chlorophyll Dye Extract - Hair

(INCI: E141(ii) / CI 75810)

Green soluble dye plant extract recommended for hair care applications.

Recommended usage level: 1 - 5%

## Madder Dye Extract - Hair

(INCI: Rubia tinctorum root extract, Maltodextrin)

Red soluble dye plant extract recommended for hair care applications.

Recommended usage level: 1 - 5%

## Sappanwood Dye Extract - Hair

(INCI: Caesalpinia sappan bark extract, Maltodextrin)

Pink/ Red soluble dye plant extract recommended for hair care applications.

Recommended usage level: 1 - 5%

## Natural Pigments

### Chestnut Pigment

(INCI: Castanea sativa extract, Potassium alum, Calcium carbonate)

Brown/ Beige insoluble natural pigment. Dispersible in oil. Ideal for make-up products, oily emulsions and soaps.

Recommended usage level: 1 - 5% in the oily phase.

### Indigo Pigment

(INCI: Indigofera tinctoria extract)

Blue insoluble natural pigment. Dispersible in oil. Ideal for make-up products, oily emulsions and soaps.

Recommended usage level: 1 - 5% in the oily phase.

### Madder Pink Pigment

(INCI: Rubia tinctorum root extract, Potassium alum, Calcium carbonate)

Pink insoluble natural pigment. Dispersible in oil. Ideal for make-up products, oily emulsions and soaps.

Recommended usage level: 1 - 5% in the oily phase.

### Goldenrod Pigment

(INCI: Solidago virgaurea extract, Potassium alum, Calcium carbonate)

Yellow insoluble natural pigment. Dispersible in oil. Ideal for make-up products, oily emulsions and soaps.

Recommended usage level: 1 - 5% in the oily phase.

### Lucerne's chlorophyll Pigment

(INCI: CI 75815 / E 141ii, Potassium alum, Calcium carbonate)

Green insoluble natural pigment. Dispersible in oil. Ideal for make-up products, oily emulsions and soaps.

Recommended usage level: 1 - 5% in the oily phase.

### Madder Rich Pigment

(INCI: Rubia tinctorum root extract, Potassium alum, Calcium carbonate)

Red insoluble natural pigment. Dispersible in oil. Ideal for make-up products, oily emulsions and soaps.

Recommended usage level: 1 - 5% in the oily phase.

## Natural Black Pigment

(INCI: CI 77268:1)

Black insoluble natural pigment. Dispersible in oil. Ideal for make-up products, oily emulsions and soaps.

Recommended usage level: 1 - 5%

## Reseda Pigment

(INCI: Reseda Luteola extract, Potassium alum, Calcium carbonate)

Yellow insoluble natural pigment. Dispersible in oil. Ideal for make-up products, oily emulsions and soaps.

Recommended usage level: 1 - 5% in the oily phase.

## Sappanwood Pigment

(INCI: Caesalpinia sappan extract, Potassium alum, Calcium carbonate)

Pink/ Red insoluble natural pigment. Dispersible in oil. Ideal for make-up products, oily emulsions and soaps.

Recommended usage level: 1 - 5% in the oily phase.

## Sorghum Pigment

(INCI: Sorghum bicolour leaf/stem extract, Potassium alum, Calcium carbonate)

Brown insoluble natural pigment. Dispersible in oil. Ideal for make-up products, oily emulsions and soaps.

Recommended usage level: 1 - 5% in the oily phase.

## Naturally Pigmented Oils

### Goldenrod Pigmented Oil

(INCI: Solidago virgaurea extract, Helianthus annus seed oil, Potassium alum, Calcium carbonate)

A naturally yellow pigmented oil, pre-dispersed (20%) in organic sunflower oil for an easier dispersion into the finished product.

Recommended usage level: 0.2 - 5% in the oily phase.

### Madder Pink Pigmented Oil

(INCI: Rubia tinctorum root extract, Helianthus annus seed oil, Potassium alum, Calcium carbonate)

A naturally pink pigmented oil, pre-dispersed (20%) in organic sunflower oil for an easier dispersion into the finished product.

Recommended usage level: 0.2 - 5% in the oily phase.

### Sappanwood Pigmented Oil

(INCI: Caesalpinia sappan extract, Helianthus annus seed oil, Potassium alum, Calcium carbonate)

A naturally pink/ red pigmented oil, pre-dispersed (20%) in organic sunflower oil for an easier dispersion into the finished product.

Recommended usage level: 0.2 - 5% in the oily phase.

### Indigo Pigmented Oil

(INCI: Indigofera tinctoria extract, Helianthus annus seed oil)

A naturally blue pigmented oil, pre-dispersed (20%) in organic sunflower oil for an easier dispersion into the finished product.

Recommended usage level: 0.2 - 5% in the oily phase.

### Madder Rich Pigmented Oil

(INCI: Rubia tinctorum root extract, Helianthus annus seed oil, Potassium alum, Calcium carbonate)

A naturally red pigmented oil, pre-dispersed (20%) in organic sunflower oil for an easier dispersion into the finished product.

Recommended usage level: 0.2 - 5% in the oily phase.

### Sorghum Pigmented Oil

(INCI: Sorghum bicolor leaf/stem extract, Helianthus annus seed oil, Potassium alum, Calcium carbonate)

A naturally brown pigmented oil, pre-dispersed (20%) in organic sunflower oil for an easier dispersion into the finished product.

Recommended usage level: 0.2 - 5% in the oily phase.

## Oily Macerates

### Aloe Vera Oily Macerate

(INCI: Aloe barbadensis leaf extract, Helianthus annuus seed oil)

Aloe Vera oily macerate obtained via filtration following a long maceration and stirring of the plant in vegetable oil.

Recommended usage level: 1 - 5%

### Arnica Oily Macerate

(INCI: Arnica montana flower extract, Helianthus annuus seed oil)

Arnica oily macerate obtained via filtration following a long maceration and stirring of the plant in vegetable oil.

Recommended usage level: 1 - 5%

### Capsicum Oily Macerate

(INCI: Capsicum annuum fruit extract, Helianthus annuus seed oil)

Capsicum oily macerate obtained via filtration following a long maceration and stirring of the plant in vegetable oil.

Recommended usage level: 1 - 5%

### Cayenne Oily Macerate

(INCI: Capsicum frutescens fruit extract, Helianthus annuus seed oil)

Cayenne oily macerate obtained via filtration following a long maceration and stirring of the plant in vegetable oil.

Recommended usage level: 1 - 5%

### Annatto Oily Macerate

(INCI: Bixa orellana seed extract, Helianthus annuus seed oil)

Annatto oily macerate obtained via filtration following a long maceration and stirring of the plant in vegetable oil.

Recommended usage level: 1 - 5%

### Calendula Oily Macerate

(INCI: Calendula officinalis flower extract, Helianthus annuus seed oil)

Calendula oily macerate obtained via filtration following a long maceration and stirring of the plant in vegetable oil.

Recommended usage level: 1 - 5%

### Carrot Oily Macerate

(INCI: Daucus carota sativa root extract, Helianthus annuus seed oil)

Carrot oily macerate obtained via filtration following a long maceration and stirring of the plant in vegetable oil.

Recommended usage level: 1 - 5%

### Celery Oily Macerate

(INCI: Apium graveolens seed extract, Helianthus annuus seed oil)

Celery oily macerate obtained via filtration following a long maceration and stirring of the plant in vegetable oil.

Recommended usage level: 1 - 5%

## Centella Oily Macerate

(INCI: Centella asiatica extract, Helianthus annuus seed oil)

Centella oily macerate obtained via filtration following a long maceration and stirring of the plant in vegetable oil.

Recommended usage level: 1 - 5%

## Clove Oily Macerate

(INCI: Eugenia caryophyllus bud extract, Helianthus annuus seed oil)

Clove oily macerate obtained via filtration following a long maceration and stirring of the plant in vegetable oil.

Recommended usage level: 1 - 5%

## Cornflower Oily Macerate

(INCI: Centaurea cyanus flower extract, Helianthus annuus seed oil)

Cornflower oily macerate obtained via filtration following a long maceration and stirring of the plant in vegetable oil.

Recommended usage level: 1 - 5%

## Everlasting Oily Macerate

(INCI: Helichrysum arenarium flower extract, Helianthus annuus seed oil)

Everlasting oily macerate obtained via filtration following a long maceration and stirring of the plant in vegetable oil.

Recommended usage level: 1 - 5%

## Fig Oily Macerate

(INCI: Ficus carica fruit extract, Helianthus annuus seed oil)

Fig oily macerate obtained via filtration following a long maceration and stirring of the plant in vegetable oil.

Recommended usage level: 1 - 5%

## Cinnamon Oily Macerate

(INCI: Cinnamomum zeylanicum bark extract, Helianthus annuus seed oil)

Cinnamon oily macerate obtained via filtration following a long maceration and stirring of the plant in vegetable oil.

Recommended usage level: 1 - 5%

## Comfrey Oily Macerate

(INCI: Symphytum officinale leaf extract, Helianthus annuus seed oil)

Comfrey oily macerate obtained via filtration following a long maceration and stirring of the plant in vegetable oil.

Recommended usage level: 1 - 5%

## Date Oily Macerate

(INCI: Phoenix dactylifera fruit extract, Helianthus annuus seed oil)

Date oily macerate obtained via filtration following a long maceration and stirring of the plant in vegetable oil.

Recommended usage level: 1 - 5%

## Fennel Oily Macerate

(INCI: Foeniculum vulgare fruit extract, Helianthus annuus seed oil)

Fennel oily macerate obtained via filtration following a long maceration and stirring of the plant in vegetable oil.

Recommended usage level: 1 - 5%

## Ginger Oily Macerate

(INCI: Zingiber officinale root extract, Helianthus annuus seed oil)

Ginger oily macerate obtained via filtration following a long maceration and stirring of the plant in vegetable oil.

Recommended usage level: 1 - 5%

## Grape Oily Macerate

(INCI: Vitis vinifera fruit extract, Helianthus annuus seed oil)

Grape oily macerate obtained via filtration following a long maceration and stirring of the plant in vegetable oil.

Recommended usage level: 1 - 5%

## Green Tea Oily Macerate

(INCI: Camellia sinensis leaf extract, Helianthus annuus seed oil)

Green Tea oily macerate obtained via filtration following a long maceration and stirring of the plant in vegetable oil.

Recommended usage level: 1 - 5%

## Jasmine Oily Macerate

(INCI: Jasminum officinale flower extract, Helianthus annuus seed oil)

Jasmine oily macerate obtained via filtration following a long maceration and stirring of the plant in vegetable oil.

Recommended usage level: 1 - 5%

## Lavender Oily Macerate

(INCI: Lavandula angustifolia flower extract, Helianthus annuus seed oil)

Lavender oily macerate obtained via filtration following a long maceration and stirring of the plant in vegetable oil.

Recommended usage level: 1 - 5%

## Milk Thistle Oily Macerate

(INCI: Sylibum marianum extract, Helianthus annuus seed oil)

Milk Thistle oily macerate obtained via filtration following a long maceration and stirring of the plant in vegetable oil.

Recommended usage level: 1 - 5%

## Green Coffee Oily Macerate

(INCI: Coffea arabica seed extract, Helianthus annuus seed oil)

Green Coffee oily macerate obtained via filtration following a long maceration and stirring of the plant in vegetable oil.

Recommended usage level: 1 - 5%

## Horsechestnut Oily Macerate

(INCI: Aesculus hippocastanum seed extract, Helianthus annuus seed oil)

Horsechestnut oily macerate obtained via filtration following a long maceration and stirring of the plant in vegetable oil.

Recommended usage level: 1 - 5%

## Kiwi Oily Macerate

(INCI: Actinidia chinensis fruit extract, Helianthus annuus seed oil)

Kiwi oily macerate obtained via filtration following a long maceration and stirring of the plant in vegetable oil.

Recommended usage level: 1 - 5%

## Lemon Oily Macerate

(INCI: Citrus limon peel extract, Helianthus annuus seed oil)

Lemon oily macerate obtained via filtration following a long maceration and stirring of the plant in vegetable oil.

Recommended usage level: 1 - 5%

## Myrrh Oily Macerate

(INCI: Commiphora abyssinica resin extract, Helianthus annuus seed oil)

Myrrh oily macerate obtained via filtration following a long maceration and stirring of the plant in vegetable oil.

Recommended usage level: 1 - 5%

## Oat Oily Macerate

(INCI: Avena sativa kernel extract, Helianthus annuus seed oil)

Oat oily macerate obtained via filtration following a long maceration and stirring of the plant in vegetable oil.

Recommended usage level: 1 - 5%

## Pomegranate Oily Macerate

(INCI: Punica granatum bark extract, Helianthus annuus seed oil)

Pomegranate oily macerate obtained via filtration following a long maceration and stirring of the plant in vegetable oil.

Recommended usage level: 1 - 5%

## Quinoa Thistle Oily Macerate

(INCI: Chenopodium quinoa seed extract, Helianthus annuus seed oil)

Quinoa oily macerate obtained via filtration following a long maceration and stirring of the plant in vegetable oil.

Recommended usage level: 1 - 5%

## Saffron Thistle Oily Macerate

(INCI: Crocus sativus flower extract, Helianthus annuus seed oil)

Saffron oily macerate obtained via filtration following a long maceration and stirring of the plant in vegetable oil.

Recommended usage level: 1 - 5%

## Sweet Orange Oily Macerate

(INCI: Citrus aurantium dulcis peel extract, Helianthus annuus seed oil)

Sweet Orange oily macerate obtained via filtration following a long maceration and stirring of the plant in vegetable oil.

Recommended usage level: 1 - 5%

## Papaya Oily Macerate

(INCI: Carica papaya fruit extract, Helianthus annuus seed oil)

Papaya oily macerate obtained via filtration following a long maceration and stirring of the plant in vegetable oil.

Recommended usage level: 1 - 5%

## Propolis Oily Macerate

(INCI: Propolis extract, Helianthus annuus seed oil)

Propolis oily macerate obtained via filtration following a long maceration and stirring of the plant in vegetable oil.

Recommended usage level: 1 - 5%

## Rosemary Oily Macerate

(INCI: Rosmarinus officinalis leaf extract, Helianthus annuus seed oil)

Rosemary oily macerate obtained via filtration following a long maceration and stirring of the plant in vegetable oil.

Recommended usage level: 1 - 5%

## St. John's Wort Oily Macerate

(INCI: Hypericum perforatum flower extract, Helianthus annuus seed oil)

St. John's Wort oily macerate obtained via filtration following a long maceration and stirring of the plant in vegetable oil.

Recommended usage level: 1 - 5%

## Turmeric Oily Macerate

(INCI: Curcuma longa root extract, Helianthus annuus seed oil)

Turmeric oily macerate obtained via filtration following a long maceration and stirring of the plant in vegetable oil.

Recommended usage level: 1 - 5%

## Vanilla Oily Macerate

(INCI: Vanilla planifolia fruit extract, Helianthus annuus seed oil)

Vanilla oily macerate obtained via filtration following a long maceration and stirring of the plant in vegetable oil.

Recommended usage level: 1 - 5%

## Witch Hazel Oily Macerate

(INCI: Hamamelis virginiana leaf extract, Helianthus annuus seed oil)

Witch Hazel oily macerate obtained via filtration following a long maceration and stirring of the plant in vegetable oil.

Recommended usage level: 1 - 5%

## White Dead Nettle Oily Macerate

(INCI: Lamium album flower extract, Helianthus annuus seed oil)

White Dead Nettle oily macerate obtained via filtration following a long maceration and stirring of the plant in vegetable oil.

Recommended usage level: 1 - 5%

## Yarrow Oily Macerate

(INCI: Achillea millefolium flower extract, Helianthus annuus seed oil)

Yarrow oily macerate obtained via filtration following a long maceration and stirring of the plant in vegetable oil.

Recommended usage level: 1 - 5%

# Organic Algae Waters

## Organic Ascophyllum Water

(INCI: Ascophyllum nodosum extract, Citric acid, Sodium benzoate, Potassium sorbate)

This brown algae is coming from Atlantic Ocean and is known for its slimming assets. Ascophyllum is ideal to formulate firming and anti-aging cosmetic products.

Organic Ascophyllum Water is obtained by evaporation and condensation of fresh Ascophyllum nodosum. It offers formulators the opportunity to replace water in formulations. It is also a perfect way to increase the organic percentage while saving earth's primary resources.

Recommended usage level: 1 - 100%

## Organic Saccharina Water

(INCI: Saccharina latissima extract, Citric acid, Sodium benzoate, Potassium sorbate)

Coming from the Atlantic Ocean Saccharina is known in cosmetic for its purifying assets. Saccharina is ideal to protect the skin from external aggressions such as pollution, UV etc.

Organic Saccharina Water is obtained by evaporation and condensation of fresh Saccharina latissima and offers formulators the opportunity to replace water in formulations. It is also a perfect way to increase the organic percentage while saving earth's primary resources.

Recommended usage level: 1 - 100%

## Organic Palmaria Water

(INCI: Palmaria palmata extract, Citric acid, Sodium benzoate, Potassium sorbate)

Coming from the North Atlantic Ocean, the Manche or the North Sea, Palmaria Palmata is known for its draining and rejuvenating actions which are ideal for slimming cosmetic products.

Organic Palmaria Water is obtained by evaporation and condensation of fresh Palmaria Palmata and offers formulators the opportunity to replace water in formulations. It is also a perfect way to increase the organic percentage while saving earth's primary resources.

Recommended usage level: 1 - 100%

## Organic Undaria Water

(INCI: Undaria pinnatifida extract, Citric acid, Sodium benzoate, Potassium sorbate)

Coming from the Atlantic Ocean, Undaria Pinnatifida is also known as Wakame and is ideal for sensitive and mature skin. Rich in antioxidant and oligo elements, it is an ally to formulate anti-ageing cosmetic products.

Organic Undaria Water is obtained by evaporation and condensation of fresh Undaria pinnatifida and offers formulators the opportunity to replace water in formulations. It is also a perfect way to increase the organic percentage while saving earth's primary resources.

Recommended usage level: 1 - 100%

# Organic Floral Waters

## Organic Cucumber Floral Water

(INCI: Cucumis sativus fruit water, Aloe barbadensis leaf water, Citric acid, Sodium benzoate and Potassium sorbate)

Organic Cucumber Floral Water. Distillation through steam water, without chemical treatment of the water.

Recommended usage level: 1 - 20%

# Organic Hydroglycerin Extracts

## Organic Aloe Vera Hydroglycerin Extract

(INCI: Water, Glycerin, Aloe barbadensis leaf extract, Citric acid, Sodium benzoate, Potassium sorbate)

Organic Aloe Vera extract obtained by filtration after a long maceration of the plant in a blend of water and vegetable palm-free glycerin.

Recommended usage level: 1 - 5%

## Organic Arnica Montana Hydroglycerin Extract

(INCI: Water, Glycerin, Arnica Montana Flower extract, Citric acid, Sodium benzoate, Potassium sorbate)

Organic Arnica Montana extract obtained by filtration after a long maceration of the plant in a blend of water and vegetable palm-free glycerin.

Recommended usage level: 1 - 5%

## Organic Bamboo Hydroglycerin Extract

(INCI: Water, Glycerin, Phyllostachys bambusoides leaf extract, Citric acid, Sodium benzoate, Potassium sorbate)

Organic Bamboo extract obtained by filtration after a long maceration of the plant in a blend of water and vegetable palm-free glycerin.

Recommended usage level: 1 - 5%

## Organic Apple Hydroglycerin Extract

(INCI: Water, Glycerin, Pyrus malus fruit extract, Citric acid, Sodium benzoate, Potassium sorbate)

Organic Apple extract obtained by filtration after a long maceration of the plant in a blend of water and vegetable palm-free glycerin.

Recommended usage level: 1 - 5%

## Organic Avocado Hydroglycerin Extract

(INCI: Water, Glycerin, Persea gratissima fruit extract, Citric acid, Sodium benzoate, Potassium sorbate)

Organic Avocado extract obtained by filtration after a long maceration of the plant in a blend of water and vegetable palm-free glycerin.

Recommended usage level: 1 - 5%

## Organic Basil Hydroglycerin Extract

(INCI: Water, Glycerin, Ocimum basilicum leaf extract, Citric acid, Sodium benzoate, Potassium sorbate)

Organic Basil extract obtained by filtration after a long maceration of the plant in a blend of water and vegetable palm-free glycerin.

Recommended usage level: 1 - 5%

### Organic Birch Bark Hydroglycerin Extract

(INCI: Water, Glycerin, Betula alba bark extract, Citric acid, Sodium benzoate, Potassium sorbate)

Organic Birch Bark extract obtained by filtration after a long maceration of the plant in a blend of water and vegetable palm-free glycerin.

Recommended usage level: 1 - 5%

### Organic Blackberry Hydroglycerin Extract

(INCI: Water, Glycerin, Rubus fruticosus fruit extract, Citric acid, Sodium benzoate, Potassium sorbate)

Organic Blackberry extract obtained by filtration after a long maceration of the plant in a blend of water and vegetable palm-free glycerin.

Recommended usage level: 1 - 5%

### Organic Carrot Hydroglycerin Extract

(INCI: Water, Glycerin, Daucus carota sativa root extract, Citric acid, Sodium benzoate, Potassium sorbate)

Organic Carrot extract obtained by filtration after a long maceration of the plant in a blend of water and vegetable palm-free glycerin.

Recommended usage level: 1 - 5%

### Organic Cherry Hydroglycerin Extract

(INCI: Water, Glycerin, Prunus avium fruit extract, Citric acid, Sodium benzoate, Potassium sorbate)

Organic Cherry extract obtained by filtration after a long maceration of the plant in a blend of water and vegetable palm-free glycerin.

Recommended usage level: 1 - 5%

### Organic Birch Hydroglycerin Extract

(INCI: Water, Glycerin, Betula alba leaf extract, Citric acid, Sodium benzoate, Potassium sorbate)

Organic Birch extract obtained by filtration after a long maceration of the plant in a blend of water and vegetable palm-free glycerin.

Recommended usage level: 1 - 5%

### Organic Calendula Hydroglycerin Extract

(INCI: Water, Glycerin, Calendula Officinalis Flower extract, Citric acid, Sodium benzoate, Potassium sorbate)

Organic Calendula extract obtained by filtration after a long maceration of the plant in a blend of water and vegetable palm-free glycerin.

Recommended usage level: 1 - 5%

### Organic Cayenne Pepper Hydroglycerin Extract

(INCI: Water, Glycerin, Capsicum frutescens fruit extract, Citric acid, Sodium benzoate, Potassium sorbate)

Organic Cayenne Pepper extract obtained by filtration after a long maceration of the plant in a blend of water and vegetable palm-free glycerin.

Recommended usage level: 1 - 5%

### Organic Cotton Hydroglycerin Extract

(INCI: Water, Glycerin, Gossypium herbaceum extract, Citric acid, Sodium benzoate, Potassium sorbate)

Organic Cotton extract obtained by filtration after a long maceration of the plant in a blend of water and vegetable palm-free glycerin.

Recommended usage level: 1 - 5%

## Organic Cucumber Hydroglycerin Extract

(INCI: Water, Glycerin, Cucumis Sativus fruit extract, Citric acid, Sodium benzoate, Potassium sorbate)

Organic Cucumber extract obtained by filtration after a long maceration of the plant in a blend of water and vegetable palm-free glycerin.

Recommended usage level: 1 - 5%

## Organic Ginger Hydroglycerin Extract

(INCI: Water, Glycerin, Zingiber officinale root extract, Citric acid, Sodium benzoate, Potassium sorbate)

Organic Ginger extract obtained by filtration after a long maceration of the plant in a blend of water and vegetable palm-free glycerin.

Recommended usage level: 1 - 5%

## Organic Ginseng Hydroglycerin Extract

(INCI: Water, Glycerin, Panax ginseng root extract, Citric acid, Sodium benzoate, Potassium sorbate)

Organic Ginseng extract obtained by filtration after a long maceration of the plant in a blend of water and vegetable palm-free glycerin.

Recommended usage level: 1 - 5%

## Organic Grapefruit Hydroglycerin Extract

(INCI: Water, Glycerin, Citrus grandis fruit extract, Citric acid, Sodium benzoate, Potassium sorbate)

Organic Grapefruit extract obtained by filtration after a long maceration of the plant in a blend of water and vegetable palm-free glycerin.

Recommended usage level: 1 - 5%

## Organic German Chamomile Hydroglycerin Extract

(INCI: Water, Glycerin, Chamomilla recutita Flower extract, Citric acid, Sodium benzoate, Potassium sorbate)

Organic German Chamomile extract obtained by filtration after a long maceration of the plant in a blend of water and vegetable palm-free glycerin.

Recommended usage level: 1 - 5%

## Organic Ginkgo Bilboa Hydroglycerin Extract

(INCI: Water, Glycerin, Ginkgo Biloba leaf extract, Citric acid, Sodium benzoate, Potassium sorbate)

Organic Ginkgo Bilboa extract obtained by filtration after a long maceration of the plant in a blend of water and vegetable palm-free glycerin.

Recommended usage level: 1 - 5%

## Organic Grape Hydroglycerin Extract

(INCI: Water, Glycerin, Vitis vinifera fruit extract, Citric acid, Sodium benzoate, Potassium sorbate)

Organic Grape extract obtained by filtration after a long maceration of the plant in a blend of water and vegetable palm-free glycerin.

Recommended usage level: 1 - 5%

## Organic Green Coffee Hydroglycerin Extract

(INCI: Water, Glycerin, Coffea arabica seed extract, Citric acid, Sodium benzoate, Potassium sorbate)

Organic Green Coffee extract obtained by filtration after a long maceration of the plant in a blend of water and vegetable palm-free glycerin.

Recommended usage level: 1 - 5%

### Organic Green Tea Hydroglycerin Extract

(INCI: Water, Glycerin, Camellia sinensis leaf extract, Citric acid, Sodium benzoate, Potassium sorbate)

Organic Green Tea extract obtained by filtration after a long maceration of the plant in a blend of water and vegetable palm-free glycerin.

Recommended usage level: 1 - 5%

### Organic Hibiscus Hydroglycerin Extract

(INCI: Water, Glycerin, Hibiscus sabdariffa flower extract, Citric acid, Sodium benzoate, Potassium sorbate)

Organic Hibiscus extract obtained by filtration after a long maceration of the plant in a blend of water and vegetable palm-free glycerin.

Recommended usage level: 1 - 5%

### Organic Horsechestnut Hydroglycerin Extract

(INCI: Water, Glycerin, Aesculus hippocastanum seed extract, Citric acid, Sodium benzoate, Potassium sorbate)

Organic Horsechestnut extract obtained by filtration after a long maceration of the plant in a blend of water and vegetable palm-free glycerin.

Recommended usage level: 1 - 5%

### Organic Ivy Hydroglycerin Extract

(INCI: Water, Glycerin, Hedera helix leaf extract, Citric acid, Sodium benzoate, Potassium sorbate)

Organic Ivy extract obtained by filtration after a long maceration of the plant in a blend of water and vegetable palm-free glycerin.

Recommended usage level: 1 - 5%

### Organic Guarana Hydroglycerin Extract

(INCI: Water, Glycerin, Paullinia cupana seed extract, Citric acid, Sodium benzoate, Potassium sorbate)

Organic Guarana extract obtained by filtration after a long maceration of the plant in a blend of water and vegetable palm-free glycerin.

Recommended usage level: 1 - 5%

### Organic Honey Hydroglycerin Extract

(INCI: Water, Glycerin, Mel extract, Citric acid, Sodium benzoate, Potassium sorbate)

Organic Honey extract obtained by filtration after a long maceration of the plant in a blend of water and vegetable palm-free glycerin.

Recommended usage level: 1 - 5%

### Organic Horsetail Hydroglycerin Extract

(INCI: Water, Glycerin, Equisetum arvense extract, Citric acid, Sodium benzoate, Potassium sorbate)

Organic Horsetail extract obtained by filtration after a long maceration of the plant in a blend of water and vegetable palm-free glycerin.

Recommended usage level: 1 - 5%

### Organic Kiwi Hydroglycerin Extract

(INCI: Water, Glycerin, Actinidia chinensis fruit extract, Citric acid, Sodium benzoate, Potassium sorbate)

Organic Kiwi extract obtained by filtration after a long maceration of the plant in a blend of water and vegetable palm-free glycerin.

Recommended usage level: 1 - 5%

### Organic Lavender Hydroglycerin Extract

(INCI: Water, Glycerin, Lavandula angustifolia flower extract, Citric acid, Sodium benzoate, Potassium sorbate)

Organic Lavender extract obtained by filtration after a long maceration of the plant in a blend of water and vegetable palm-free glycerin.

Recommended usage level: 1 - 5%

### Organic Licorice Hydroglycerin Extract

(INCI: Water, Glycerin, Glycyrrhiza glabra root extract, Citric acid, Sodium benzoate, Potassium sorbate)

Organic Licorice extract obtained by filtration after a long maceration of the plant in a blend of water and vegetable palm-free glycerin.

Recommended usage level: 1 - 5%

### Organic Linseed Hydroglycerin Extract

(INCI: Water, Glycerin, Linum usitatissimum seed extract, Citric acid, Sodium benzoate, Potassium sorbate)

Organic Linseed extract obtained by filtration after a long maceration of the plant in a blend of water and vegetable palm-free glycerin.

Recommended usage level: 1 - 5%

### Organic Mango Hydroglycerin Extract

(INCI: Water, Glycerin, Mangifera indica fruit extract, Citric acid, Sodium benzoate, Potassium sorbate)

Organic Mango extract obtained by filtration after a long maceration of the plant in a blend of water and vegetable palm-free glycerin.

Recommended usage level: 1 - 5%

### Organic Lemon Hydroglycerin Extract

(INCI: Water, Glycerin, Citrus Limon fruit extract, Citric acid, Sodium benzoate, Potassium sorbate)

Organic Lemon extract obtained by filtration after a long maceration of the plant in a blend of water and vegetable palm-free glycerin.

Recommended usage level: 1 - 5%

### Organic Linden Hydroglycerin Extract

(INCI: Water, Glycerin, Tilia platyphyllos flower extract, Citric acid, Sodium benzoate, Potassium sorbate)

Organic Linden extract obtained by filtration after a long maceration of the plant in a blend of water and vegetable palm-free glycerin.

Recommended usage level: 1 - 5%

### Organic Mallow Hydroglycerin Extract

(INCI: Water, Glycerin, Malva sylvestris flower extract, Citric acid, Sodium benzoate, Potassium sorbate)

Organic Mallow extract obtained by filtration after a long maceration of the plant in a blend of water and vegetable palm-free glycerin.

Recommended usage level: 1 - 5%

### Organic Marshmallow Hydroglycerin Extract

(INCI: Water, Glycerin, Althaea officinalis root extract, Citric acid, Sodium benzoate, Potassium sorbate)

Organic Marshmallow extract obtained by filtration after a long maceration of the plant in a blend of water and vegetable palm-free glycerin.

Recommended usage level: 1 - 5%

### Organic Mulberry Hydroglycerin Extract

(INCI: Water, Glycerin, Morus alba leaf extract, Citric acid, Sodium benzoate, Potassium sorbate)

Organic Mulberry extract obtained by filtration after a long maceration of the plant in a blend of water and vegetable palm-free glycerin.

Recommended usage level: 1 - 5%

### Organic Olive Tree Hydroglycerin Extract

(INCI: Water, Glycerin, Olea europaea leaf extract, Citric acid, Sodium benzoate, Potassium sorbate)

Organic Olive Tree extract obtained by filtration after a long maceration of the plant in a blend of water and vegetable palm-free glycerin.

Recommended usage level: 1 - 5%

### Organic Passionflower Hydroglycerin Extract

(INCI: Water, Glycerin, Passiflora incarnata extract, Citric acid, Sodium benzoate, Potassium sorbate)

Organic Passionflower extract obtained by filtration after a long maceration of the plant in a blend of water and vegetable palm-free glycerin.

Recommended usage level: 1 - 5%

### Organic Pomegranate Hydroglycerin Extract

(INCI: Water, Glycerin, Punica granatum fruit extract, Citric acid, Sodium benzoate, Potassium sorbate)

Organic Pomegranate extract obtained by filtration after a long maceration of the plant in a blend of water and vegetable palm-free glycerin.

Recommended usage level: 1 - 5%

### Organic Oat Hydroglycerin Extract

(INCI: Water, Glycerin, Avena sativa kernel extract, Citric acid, Sodium benzoate, Potassium sorbate)

Organic Oat extract obtained by filtration after a long maceration of the plant in a blend of water and vegetable palm-free glycerin.

Recommended usage level: 1 - 5%

### Organic Papaya Hydroglycerin Extract

(INCI: Water, Glycerin, Carica papaya fruit extract, Citric acid, Sodium benzoate, Potassium sorbate)

Organic Papaya extract obtained by filtration after a long maceration of the plant in a blend of water and vegetable palm-free glycerin.

Recommended usage level: 1 - 5%

### Organic Pineapple Hydroglycerin Extract

(INCI: Water, Glycerin, Ananas sativus fruit extract, Citric acid, Sodium benzoate, Potassium sorbate)

Organic Pineapple extract obtained by filtration after a long maceration of the plant in a blend of water and vegetable palm-free glycerin.

Recommended usage level: 1 - 5%

### Organic Prickly Pear Hydroglycerin Extract

(INCI: Water, Glycerin, Opuntia ficus-indica flower extract, Citric acid, Sodium benzoate, Potassium sorbate)

Organic Prickly Pear extract obtained by filtration after a long maceration of the plant in a blend of water and vegetable palm-free glycerin.

Recommended usage level: 1 - 5%

### Organic Rice Hydroglycerin Extract

(INCI: Water, Glycerin, Oryza sativa extract, Citric acid, Sodium benzoate, Potassium sorbate)

Organic Rice extract obtained by filtration after a long maceration of the plant in a blend of water and vegetable palm-free glycerin.

Recommended usage level: 1 - 5%

### Organic Rose Hydroglycerin Extract

(INCI: Water, Glycerin, Rosa damascena flower extract, Citric acid, Sodium benzoate, Potassium sorbate)

Organic Rose extract obtained by filtration after a long maceration of the plant in a blend of water and vegetable palm-free glycerin.

Recommended usage level: 1 - 5%

### Organic Sage Hydroglycerin Extract

(INCI: Water, Glycerin, Salvia officinalis leaf extract, Citric acid, Sodium benzoate, Potassium sorbate)

Organic Sage extract obtained by filtration after a long maceration of the plant in a blend of water and vegetable palm-free glycerin.

Recommended usage level: 1 - 5%

### Organic Soapwort Hydroglycerin Extract

(INCI: Water, Glycerin, Saponaria officinalis leaf/root extract, Citric acid, Sodium benzoate, Potassium sorbate)

Organic Soapwort extract obtained by filtration after a long maceration of the plant in a blend of water and vegetable palm-free glycerin.

Recommended usage level: 1 - 5%

### Organic Roman Chamomile Hydroglycerin Extract

(INCI: Water, Glycerin, Anthemis nobilis flower extract, Citric acid, Sodium benzoate, Potassium sorbate)

Organic Roman Chamomile extract obtained by filtration after a long maceration of the plant in a blend of water and vegetable palm-free glycerin.

Recommended usage level: 1 - 5%

### Organic Rosemary Hydroglycerin Extract

(INCI: Water, Glycerin, Rosmarinus officinalis leaf extract, Citric acid, Sodium benzoate, Potassium sorbate)

Organic Rosemary extract obtained by filtration after a long maceration of the plant in a blend of water and vegetable palm-free glycerin.

Recommended usage level: 1 - 5%

### Organic Seaweed Hydroglycerin Extract

(INCI: Water, Glycerin, Fucus vesiculosus extract, Citric acid, Sodium benzoate, Potassium sorbate)

Organic Seaweed extract obtained by filtration after a long maceration of the plant in a blend of water and vegetable palm-free glycerin.

Recommended usage level: 1 - 5%

### Organic St. John's Wort Hydroglycerin Extract

(INCI: Water, Glycerin, Hypericum Perforatum flower extract, Citric acid, Sodium benzoate, Potassium sorbate)

Organic St. John's Wort extract obtained by filtration after a long maceration of the plant in a blend of water and vegetable palm-free glycerin.

Recommended usage level: 1 - 5%

### Organic Stinging Nettle Hydroglycerin Extract

(INCI: Water, Glycerin, Urtica dioica leaf extract, Citric acid, Sodium benzoate, Potassium sorbate)

Organic Stinging Nettle extract obtained by filtration after a long maceration of the plant in a blend of water and vegetable palm-free glycerin.

Recommended usage level: 1 - 5%

### Organic Thyme Hydroglycerin Extract

(INCI: Water, Glycerin, Thymus vulgaris leaf extract, Citric acid, Sodium benzoate, Potassium sorbate)

Organic Thyme extract obtained by filtration after a long maceration of the plant in a blend of water and vegetable palm-free glycerin.

Recommended usage level: 1 - 5%

### Organic Verbena Hydroglycerin Extract

(INCI: Water, Glycerin, Verbena officinalis extract, Citric acid, Sodium benzoate, Potassium sorbate)

Organic Verbena extract obtained by filtration after a long maceration of the plant in a blend of water and vegetable palm-free glycerin.

Recommended usage level: 1 - 5%

### Organic Willow Hydroglycerin Extract

(INCI: Water, Glycerin, Salix alba bark extract, Citric acid, Sodium benzoate, Potassium sorbate)

Organic Willow extract obtained by filtration after a long maceration of the plant in a blend of water and vegetable palm-free glycerin.

Recommended usage level: 1 - 5%

### Organic Strawberry Hydroglycerin Extract

(INCI: Water, Glycerin, Fragaria vesca fruit extract, Citric acid, Sodium benzoate, Potassium sorbate)

Organic Strawberry extract obtained by filtration after a long maceration of the plant in a blend of water and vegetable palm-free glycerin.

Recommended usage level: 1 - 5%

### Organic Vanilla Hydroglycerin Extract

(INCI: Water, Glycerin, Vanilla planifolia fruit extract, Citric acid, Sodium benzoate, Potassium sorbate)

Organic Vanilla extract obtained by filtration after a long maceration of the plant in a blend of water and vegetable palm-free glycerin.

Recommended usage level: 1 - 5%

### Organic White Tea Hydroglycerin Extract

(INCI: Water, Glycerin, Camellia sinensis leaf extract, Citric acid, Sodium benzoate, Potassium sorbate)

Organic White Tea extract obtained by filtration after a long maceration of the plant in a blend of water and vegetable palm-free glycerin.

Recommended usage level: 1 - 5%

### Organic Witch Hazel Hydroglycerin Extract

(INCI: Water, Glycerin, Hamamelis virginiana leaf extract, Citric acid, Sodium benzoate, Potassium sorbate)

Organic Witch Hazel extract obtained by filtration after a long maceration of the plant in a blend of water and vegetable palm-free glycerin.

Recommended usage level: 1 - 5%

## Organic Oily Macerates

### Organic Aloe Vera Oily Macerate

(INCI: Aloe barbadensis leaf extract, Helianthus annuus seed oil)

Organic Aloe Vera oily macerate obtained by filtration after a long maceration and stirring of the plant in organic vegetable oil.

Recommended usage level: 1 - 5%

### Organic Bamboo Oily Macerate

(INCI: Phyllostachys bambusoides leaf extract)

Organic Bamboo oily macerate obtained via filtration following a long maceration and stirring of the plant in vegetable oil.

Recommended usage level: 1 - 5%

### Organic Coffee Oily Macerate

(INCI: Coffea arabica seed extract, Helianthus annuus seed oil)

Organic Coffee oily macerate obtained by filtration after a long maceration and stirring of the plant in organic vegetable oil.

Recommended usage level: 1 - 5%

### Organic Green Tea Oily Macerate

(INCI: Camellia sinensis leaf extract, Helianthus annuus seed oil)

Organic Green Tea oily macerate obtained by filtration after a long maceration and stirring of the plant in organic vegetable oil.

Recommended usage level: 1 - 5%

### Organic Arnica Oily Macerate

(INCI: Arnica montana flower extract, Helianthus annuus seed oil)

Organic Arnica oily macerate obtained by filtration after a long maceration and stirring of the plant in organic vegetable oil.

Recommended usage level: 1 - 5%

### Organic Calendula Oily Macerate

(INCI: Calendula officinalis flower extract, Helianthus annuus seed oil)

Organic Calendula oily macerate obtained by filtration after a long maceration and stirring of the plant in organic vegetable oil.

Recommended usage level: 1 - 5%

### Organic Cotton Oily Macerate

(INCI: Gossypium herbaceum extract, Helianthus annuus seed oil)

Organic Cotton oily macerate obtained by filtration after a long maceration and stirring of the plant in organic vegetable oil.

Recommended usage level: 1 - 5%

### Organic Oat Oily Macerate

(INCI: Avena sativa kernel extract, Helianthus annuus seed oil)

Organic Oat oily macerate obtained by filtration after a long maceration and stirring of the plant in organic vegetable oil.

Recommended usage level: 1 - 5%

## Organic St. John's Wort (Olive) Oily Macerate

(INCI: Hypericum perforatum flower extract, Olea europaea fruit oil)

Organic St. John's Wort (olive) oily macerate obtained by filtration after a long maceration and stirring of the plant in organic vegetable oil.

Recommended usage level: 1 - 5%

## Organic St. John's Wort Oily Macerate

(INCI: Hypericum perforatum flower extract, Helianthus annuus seed oil)

Organic St. John's Wort oily macerate obtained by filtration after a long maceration and stirring of the plant in organic vegetable oil.

Recommended usage level: 1 - 5%

## Organic Vanilla Oily Macerate

(INCI: Vanilla planifolia fruit extract, Helianthus annuus seed oil)

Organic Vanilla oily macerate obtained by filtration after a long maceration and stirring of the plant in organic vegetable oil.

Recommended usage level: 1 - 5%

## Organic White Tea Oily Macerate

(INCI: Camellia sinensis leaf extract, Helianthus annuus seed oil)

Organic White Tea oily macerate obtained by filtration after a long maceration and stirring of the plant in organic vegetable oil.

Recommended usage level: 1 - 5%

# Waters

## Organic Hemp Water

(INCI: Cannabis sativa seed water)

Organic Hemp Water is an hydrolat obtained by water-steam distillation. The stems and leaves are crossed by water-steam. The steam is condensed and the recovered fluid is composed by water.

The Organic Hemp Water concentration is 100% : 1kg of Organic Hemp is processed to obtain 1kg of Organic Water. It is THC free!

Recommended usage level: 1 - 100%

## Organic Oils & Butters

### Organic Baobab Oil

(INCI: Adansonia Digitata Seed Oil)

Organic Baobab Oil is an oil with a non-greasy feel containing high levels of fatty acids to help restore skin suppleness and barrier function, promote skin regeneration and prevention of stretch marks and chapped lips. Ideal for skincare, bodycare, aftersun, massage, hair and nail products.

Recommended usage level: 1-10%

### Organic Deodorised Camellia Oil

(INCI: Camellia Oleifera Seed Oil)

Organic Deodorised Camellia Oil has excellent absorbance properties and a soft touch rich in fatty acids and Vitamins A, B and E to help revitalise skin, hair & nails. Ideal for skincare, eye products, body, lip and hand care.

Recommended usage level: 1-10%

### Organic Deodorised Coconut Oil

(INCI: Cocos Nucifera Oil)

Organic Deodorised Coconut Oil is a light oil rich in medium chain fatty acids and particularly Lauric Acid, which makes it ideal for use in soaps. It also acts as an excellent emollient with a great affinity for skin and hair. Ideal for soaps, moisturisers, massage oils and hair products.

Recommended usage level: 1-10%

### Organic Deodorised Argan Oil

(INCI: Argania Spinosa Kernel Oil)

Organic Deodorised Argan Oil is a rich oil containing high levels of fatty acids, Tocopherols and Sterols to reinforce skin barrier function of skin and scalp, restore shine to hair and strengthen nails. Also demonstrated to help maintain elasticity of postmenopausal skin and regulate skin sebum production. Ideal for skincare, bodycare and haircare.

Recommended usage level: 1-10%

### Organic Deodorised Cocoa Butter

(INCI: Theobroma Cacao Seed Butter)

Organic Deodorised Cocoa Butter is rich in oleic, stearic and palmitic acids and has multiple benefits such as intense moisturisation, preserving suppleness and firmness of the skin and hydrating scalp and hair. With a melting point between 34 - 38°C, it has strong stability and melts at skin temperature. Ideal for moisturisers, lip balms, hand creams and soaps.

Recommended usage level: 1-20%

### Organic Deodorised Sesame Oil

(INCI: Sesamum Indicum Seed Oil)

Organic Deodorised Sesame Oil is rich in Omega-6, tocopherols and lecithins and acts as an emollient, moisturiser and skin barrier restorer, as well as being used to soften the hair and scalp. Ideal for moisturisers, cleansers and haircare products.

Recommended usage level: 1-10%

## Organic Olive Oil

(INCI: Olea Europaea Fruit Oil)

Organic Olive Oil is rich in essential fatty acids, tocopherols and squalene and acts as a natural emollient, moisturiser and skin regenerator. Ideal for use in skincare, body care, haircare, hand care and bar soaps. Available in Organic Extra Virgin, Organic Deodorised and Organic Fairtrade options.

Recommended usage level: 1-10%

## Organic Refined Cold Pressed Cucumber Oil

(INCI: Cucumis Sativus Seed Oil)

Organic Refined Cold Pressed Cucumber Oil contains more than 60% linoleic acid and is rich in phytosterols, making it ideal to protect and restore the hydrolipidic film and leave skin feeling more elastic and rejuvenated. Also helps to regulate sebum production and leave skin feeling refreshed. Ideal for creams, serums and moisturisers.

Recommended usage level: 1 - 10%

## Organic Refined Mango Butter

(INCI: Mangifera Indica Seed Butter)

Organic Mango Butter is rich in oleic, stearic and palmitic acids and vitamins A, C and E to hydrate and moisturise the skin, protect against the drying effect of soaps and prevent scalp dryness.

Melts at body temperature and is ideal for sticks, balms, hand creams, body butters and lip balms, as well as haircare.

Recommended usage level: 1-3%

## Organic Shea Butter

(INCI: Butyrospermum Parkii Butter)

Organic Shea Butter is locally produced in Burkina Faso and is rich in palmitic, stearic and oleic acids and vitamins A, D, E & F to hydrate and repair dehydrated skin, lips, hands and hair. Ideal for intensive moisturisers, aftersun, lip balms, hand creams and hair products.

Recommended usage level: Haircare: 3 - 5%;  
Skin and Hand products: 3 - 8%

## Organic Sunflower Oil

(INCI: Helianthus Annuus Seed Oil)

Organic Sunflower Oil is rich in linoleic acid, oleic acid and vitamin E and helps to soothe and moisturise the skin, as well as condition dry hair. Ideal for use as a base oil in anhydrous products and also in skincare, haircare, baby, massage and bath products. Available in Organic Deodorised high oleic and Organic Deodorised options.

Recommended usage level: up to 70%

## Organic Sweet Almond Oil

(INCI: Prunus Amygdalus Dulcis Oil)

Organic Sweet Almond Oil is rich in oleic and linoleic acids and vitamin A to nourish and moisturise, as well as regenerate and restore elasticity. Ideal for delicate or mature skin, or in haircare, massage products and baby care. Available in Organic Virgin and Organic Deodorised options.

Recommended usage level: 1-10%

## Organic Virgin Apricot Oil

(INCI: Prunus Armeniaca Kernel Oil)

Organic Virgin Apricot Oil has a dry touch and is rich in Omega 6 & 9 essential fatty acids, Vitamin A & Tocopherols to moisturise and nourish, with soothing and antioxidant benefits. Also helps to reduce signs of ageing and brighten dull skin for a healthy glow. Ideal for skincare, makeup, babycare, body and massage products.

Recommended usage level: 1-10

## Organic Virgin Castor Oil

(INCI: Ricinus Communis Seed Oil)

Organic Virgin Castor Oil is a rich oil with a particularly high content of Ricinoleic acid which is an excellent alternative to petroleum derived emollients and offers strong film forming, water resistance, soothing and calming properties as well as being an excellent pigment dispersion agent and hair growth stimulant. Ideal for atopic skin, lip care and haircare.

Recommended usage level: 3 - 6% in haircare; 2 - 20% in makeup.

## Organic Virgin Grape Seed Oil

(INCI: Vitis Vinifera Seed Oil)

Organic Virgin Grape Seed Oil is a by-product of the wine industry rich in linoleic acid and with excellent emollient and film forming properties. Ideal as a base oil for helping to regenerate mature, damaged or stressed skin, particularly around the eye area and for body, lip and hand care.

Recommended usage level: 1-50%

## Organic Virgin Hemp Oil

(INCI: Cannabis Sativa Seed Oil)

Locally sourced Organic Virgin Hemp Oil is a non-greasy oil with quick penetration that has ideal proportions of Omega-3 and 6 fatty acids to effectively hydrate skin and hair and leave it feeling refreshed and revitalised. Ideal for mature, atopic or tired skin and for bringing new vitality to hair.

Recommended usage level: 1-10%

## Organic Virgin Jojoba Oil

(INCI: Simmondsia Chinensis Seed Oil)

Organic Virgin Jojoba Oil is a liquid wax ester rich in unsaponifiables and oleic acid to help moisturise, calm and regenerate the skin, as well as having sebum regulating properties. Ideal for any skin type from oily to dry, mature or sensitive.

Recommended usage level: 1-10%

## Organic Virgin Macadamia Oil

(INCI: Macadamia Integrifolia Seed Oil)

Organic Virgin Macadamia Oil is rich in oleic, palmitoleic and palmitic acids and restores softness and suppleness to the skin as well as helping to protect against oxidation. Ideal in skincare for dry or sensitive skin, aftersun products, haircare and massage formulations.

Recommended usage level: 1 - 10% (general); or up to 20% in massage products.

## Organic Virgin Pomegranate Oil

(INCI: Punica Granatum Seed Oil)

Organic Virgin Pomegranate Oil contains 60% alpha-punicic acid, known for its calming and healing properties as well as vitamins E and F, to restore skin barrier and protect skin against UV and pollution. Ideal for atopic and mature skin, the eye contour, aftersun, after shave and after-depilatory products and products for dry hair.

Recommended usage level: 1-10%

## Organic Virgin Raspberry Oil

(INCI: Rubus Idaeus Seed Oil)

Organic Virgin Raspberry Oil is made from by-products from the food industry. Rich in alpha and gamma-tocopherols, Vitamin A, Omega-3 and in particular, Omega-6, containing up to 60% linoleic acid. Ideal for sensitive, dry, tired or mature skins, it brings repairing and protecting properties and is also ideal to help reduce the effects of oxidative stress.

Recommended usage level: 1-10

## Organic Virgin Soybean Oil

(INCI: Glycine Soja Oil)

Organic Virgin Soybean Oil is rich in linoleic acid, oleic acid, tocopherol and lecithin and helps to restore the skin's hydrolipidic film, regenerate and restore suppleness, as well having a softening and protective effect on hair. Ideal for skincare, haircare and massage products.

Recommended usage level: 1-10%

# Contact Us

Interested?

Then contact the Infinity team  
for more information:

T: 01344 354 900

E: [technical@infinity-ingredients.co.uk](mailto:technical@infinity-ingredients.co.uk)

W: [infinity-ingredients.co.uk](http://infinity-ingredients.co.uk)