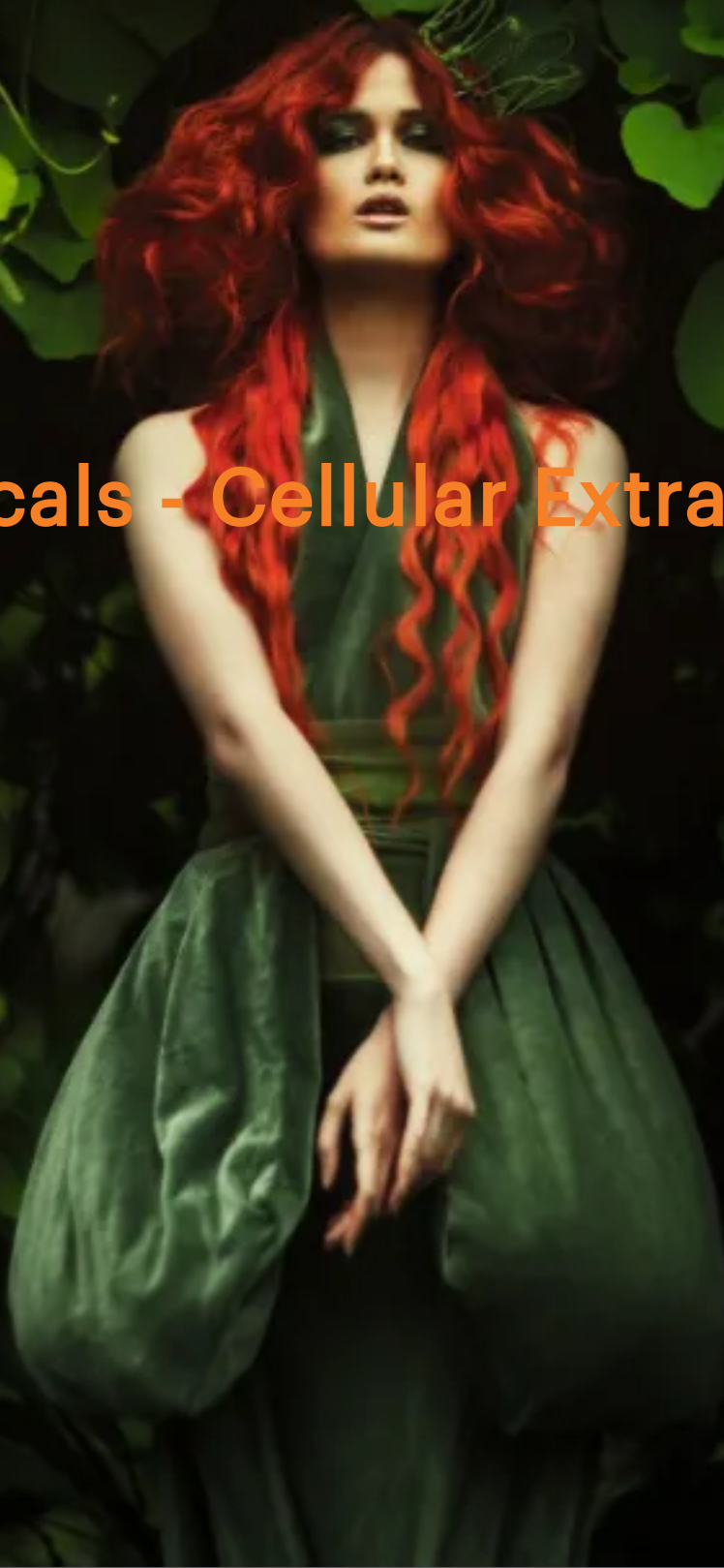


INFINITY GREDIENTS

Inspiring Cosmetics

Botanicals - Cellular Extracts



Botanicals - Cellular Extracts

Uniquely Australian Cellular Extracts: Powered by Nature, Perfected by Science

We're proud to partner with the incredible team at NATIVE EXTRACTS to bring you a truly unique collection of cellular botanical extracts straight from the heart of Australia's rich biodiversity. Offering oil-soluble and upcycled solutions, such as Red Velvet Oil from waste tomato seeds.

Tapping into the genius of nature's own design, their pioneering CELLULAR EXTRACTION™ technology captures the very essence of Australian botanicals, releasing the potent phyto-compounds plants have evolved to protect, heal, and thrive.

This cutting-edge process goes far beyond traditional extraction methods, unlocking a broader spectrum of water-soluble plant molecules that were once out of reach. Think of it as nature's full potential, now made accessible and ready to work wonders in your formulations.

Backed by rigorous testing and detailed data from independent labs, each extract offers not just purity and performance, but real science you can trust. Operating a green and self-sufficient manufacturing facility using solar power and recycling water.

Whether you're formulating for skin, hair, wellness, or something entirely new, these extracts are nature's secret weapons, delivered with innovation, sustainability, and a whole lot of Aussie spirit.

Acai Berry Cellular Extract

(INCI: Euterpe oleracea Fruit Extract)

Delivering “true to nature” hydrophilic plant profiles. Cellular Extraction harnesses the species’ water-soluble blueprint of phyto-compounds and their derivatives (the entourage), in their synergistic relationships, as they exist in the cell. Extracted rapidly under high pressure, NATIVE EXTRACTS maintain the molecules’ natural integrity.

Committed to conscious manufacturing, Cellular Extracts are created using purified, deionised, rain-harvested water and less plant material than past processes to produce a natural True to Nature plant extract, that is water-wise, repurposes waste, traceable to source, transparent in composition.

Indigenous tribes regularly use two thousand of the three thousand known rainforest fruits for medicinal purposes. Now used in both skin and hair care for its revitalising properties.

Recommended usage level: 0.5 – 1% concentrate; 1 – 5% dilution

Amla Berry Cellular Extract

(INCI: Emblica officinalis Fruit Extract)

Delivering “true to nature” hydrophilic plant profiles. Cellular Extraction harnesses the species’ water-soluble blueprint of phyto-compounds and their derivatives (the entourage), in their synergistic relationships, as they exist in the cell. Extracted rapidly under high pressure, NATIVE EXTRACTS maintain the molecules’ natural integrity.

Committed to conscious manufacturing, Cellular Extracts are created using purified, deionised, rain-harvested water and less plant material than past processes to produce a natural True to Nature plant extract, that is water-wise, repurposes waste, traceable to source, transparent in composition.

This super berry is a centerpiece of the great tradition of Ayurvedic medicine, now well known for supporting collagen production, leading to healthier and more youthful-looking skin

Recommended usage level: 0.5 – 1% concentrate; 1 – 5% dilution

Amaranth Seed Cellular Extract

(INCI: Amaranthus caudatus Seed Extract)

Delivering “true to nature” hydrophilic plant profiles. Cellular Extraction harnesses the species’ water-soluble blueprint of phyto-compounds and their derivatives (the entourage), in their synergistic relationships, as they exist in the cell. Extracted rapidly under high pressure, NATIVE EXTRACTS maintain the molecules’ natural integrity.

Committed to conscious manufacturing, Cellular Extracts are created using purified, deionised, rain-harvested water and less plant material than past processes to produce a natural True to Nature plant extract, that is water-wise, repurposes waste, traceable to source, transparent in composition.

The Aztec people grew amaranth an estimated 8,000+ years ago. Containing peptides from the seeds of the velvet flower, the small molecules offer greater penetration into skin and hair fibers. The lightweight peptides provide powerful performance without weighing down hair enhancing structural integrity of skin & fibres. It adds shine, improves manageability and fortifies hair.

Recommended usage level: 0.5 – 1% concentrate; 1 – 5% dilution

Amur Bark Cellular Extract

(INCI: Phellodendron amurense Bark Extract)

Delivering “true to nature” hydrophilic plant profiles. Cellular Extraction harnesses the species’ water-soluble blueprint of phyto-compounds and their derivatives (the entourage), in their synergistic relationships, as they exist in the cell. Extracted rapidly under high pressure, NATIVE EXTRACTS maintain the molecules’ natural integrity.

Committed to conscious manufacturing, Cellular Extracts are created using purified, deionised, rain-harvested water and less plant material than past processes to produce a natural True to Nature plant extract, that is water-wise, repurposes waste, traceable to source, transparent in composition.

In recent years, Amur Bark has gained recognition in the skincare industry for its antioxidant abilities.

Recommended usage level: 0.5 – 1% concentrate; 1 – 5% dilution

Aniseed Myrtle Cellular Extract

(INCI: Backhousia Anisata Leaf Extract)

Delivering “true to nature” hydrophilic plant profiles. Cellular Extraction harnesses the species’ water-soluble blueprint of phyto-compounds and their derivatives (the entourage), in their synergistic relationships, as they exist in the cell. Extracted rapidly under high pressure, NATIVE EXTRACTS maintain the molecules’ natural integrity.

Committed to conscious manufacturing, Cellular Extracts are created using purified, deionised, rain-harvested water and less plant material than past processes to produce a natural True to Nature plant extract, that is water-wise, repurposes waste, traceable to source, transparent in composition.

Well known for providing radiance & luminosity. Also considered a collagen booster.

Recommended usage level: 0.5 – 1% concentrate; 1 – 5% dilution.

Ashwagandha Cellular Extract

(INCI: Withania somnifera Root Extract)

Delivering “true to nature” hydrophilic plant profiles. Cellular Extraction harnesses the species’ water-soluble blueprint of phyto-compounds and their derivatives (the entourage), in their synergistic relationships, as they exist in the cell.

Extracted rapidly under high pressure, NATIVE EXTRACTS maintain the molecules’ natural integrity.

Committed to conscious manufacturing, Cellular Extracts are created using purified, deionised, rain-harvested water and less plant material than past processes to produce a natural True to Nature plant extract, that is water-wise, repurposes waste, traceable to source, transparent in composition.

For internal and external stress, this 'Indian ginseng' is a versatile herb that has nourishing tonic effects and various health-promoting actives. It is a typical adaptogen herb that has the effect of increasing adaptability and resistance of skin & hair to various stresses.

Recommended usage level: 0.5 – 1% concentrate; 1 – 5% dilution

Asparagus (Shativari) Cellular Extract

(INCI: Asparagus racemosus Root Extract)

Delivering “true to nature” hydrophilic plant profiles. Cellular Extraction harnesses the species’ water-soluble blueprint of phyto-compounds and their derivatives (the entourage), in their synergistic relationships, as they exist in the cell.

Extracted rapidly under high pressure, NATIVE EXTRACTS maintain the molecules’ natural integrity.

Committed to conscious manufacturing, Cellular Extracts are created using purified, deionised, rain-harvested water and less plant material than past processes to produce a natural True to Nature plant extract, that is water-wise, repurposes waste, traceable to source, transparent in composition.

Shatavari or 'Indian Asparagus' has been traditionally associated with boosting female health and balance.

Women at all life stages have benefitted from Shatavari as a general health tonic from youth to menopause and beyond.

Recommended usage level: 0.5 – 1% concentrate; 1 – 5% dilution

Banana Cellular Extract

(INCI: Musa paradisiaca Fruit Extract; Musa sapientum (Banana) Fruit Extract)

Delivering “true to nature” hydrophilic plant profiles. Cellular Extraction harnesses the species’ water-soluble blueprint of phyto-compounds and their derivatives (the entourage), in their synergistic relationships, as they exist in the cell.

Extracted rapidly under high pressure, NATIVE EXTRACTS maintain the molecules’ natural integrity. Committed to conscious manufacturing, Cellular Extracts are created using purified, deionised, rain-harvested water and less plant material than past processes to produce a natural True to Nature plant extract, that is water-wise, repurposes waste, traceable to source, transparent in composition.

A unique natural extract packed full of phyto-compounds for use in cosmetics.

Recommended usage level: 0.5 – 1% concentrate; 1 – 5% dilution

Banksia Flower Cellular Extract

(INCI: Banksia Serrata Flower Extract)

Delivering “true to nature” hydrophilic plant profiles. Cellular Extraction harnesses the species’ water-soluble blueprint of phyto-compounds and their derivatives (the entourage), in their synergistic relationships, as they exist in the cell. Extracted rapidly under high pressure, NATIVE EXTRACTS maintain the molecules’ natural integrity.

Committed to conscious manufacturing, Cellular Extracts are created using purified, deionised, rain-harvested water and less plant material than past processes to produce a natural True to Nature plant extract, that is water-wise, repurposes waste, traceable to source, transparent in composition. traditionally used for curing stomach conditions by burning the tree’s bark and mixing the ash with resin of the marri tree.

Banksia has evolved to store powerful phyto-compounds, which can be considered for use in hair and skin products. Acting as an anti-ageing, anti-wrinkle, skin repair & brightening agent. It contains actives including amino acids, amines, organic acids and flavone glycosides.

Recommended usage level: 0.5 – 1% concentrate; 1 – 5% dilution.

Bearberry Leaf Cellular Extract

(INCI: Arctostaphylos uva ursi Leaf Extract)

Delivering “true to nature” hydrophilic plant profiles. Cellular Extraction harnesses the species’ water-soluble blueprint of phyto-compounds and their derivatives (the entourage), in their synergistic relationships, as they exist in the cell. Extracted rapidly under high pressure, NATIVE EXTRACTS maintain the molecules’ natural integrity.

Committed to conscious manufacturing, Cellular Extracts are created using purified, deionised, rain-harvested water and less plant material than past processes to produce a natural True to Nature plant extract, that is water-wise, repurposes waste, traceable to source, transparent in composition.

The NE Bearberry Cellular Extract delivers the natural molecules this botanical species can offer in a water-soluble format, including arbutin, kaempferol, quercetin, gallic acid (GA), catechin and flavonoid glycosides.

Ideal for haircare, blemished skin, brightening, hair loss and premature ageing applications. Available as a concentrate and as a 10% dilution.

Recommended usage level: 0.5 – 1% concentrate; 1 – 5% dilution

Beetroot Cellular Extract

(INCI: Beta vulgaris Root Extract; Beta vulgaris (Beet) Root Extract)

Delivering “true to nature” hydrophilic plant profiles. Cellular Extraction harnesses the species’ water-soluble blueprint of phyto-compounds and their derivatives (the entourage), in their synergistic relationships, as they exist in the cell.

Extracted rapidly under high pressure, NATIVE EXTRACTS maintain the molecules’ natural integrity. Committed to conscious manufacturing, Cellular Extracts are created using purified, deionised, rain-harvested water and less plant material than past processes to produce a natural True to Nature plant extract, that is water-wise, repurposes waste, traceable to source, transparent in composition.

Beetroot Cellular Extract delivers natural molecules in a water-soluble format, including sugars, organic and amino acids, tryptophan, phenolics, lignan and ferulic acid for improving skin and hair condition.

Recommended usage level: 0.5 – 1% concentrate; 1 – 5% dilution

Bitter Orange Cellular Extract

(INCI: Citrus aurantium amara Peel Extract; Citrus aurantium amara (Bitter Orange) Peel Extract)

Delivering “true to nature” hydrophilic plant profiles. Cellular Extraction harnesses the species’ water-soluble blueprint of phyto-compounds and their derivatives (the entourage), in their synergistic relationships, as they exist in the cell.

Extracted rapidly under high pressure, NATIVE EXTRACTS maintain the molecules’ natural integrity.

Committed to conscious manufacturing, Cellular Extracts are created using purified, deionised, rain-harvested water and less plant material than past processes to produce a natural True to Nature plant extract, that is water-wise, repurposes waste, traceable to source, transparent in composition.

Bitter Orange offers an array of applications from blemish prone and reactive prone skin, and hydration to under eye care.

Recommended usage level: Recommended usage level: 0.5 – 1% concentrate; 1 – 5% dilution

Black Currant Cellular Extract

(INCI: Rubus nigrum Fruit Extract; Ribes nigrum (Black Currant) Fruit Extract)

Delivering “true to nature” hydrophilic plant profiles. Cellular Extraction harnesses the species’ water-soluble blueprint of phyto-compounds and their derivatives (the entourage), in their synergistic relationships, as they exist in the cell.

Extracted rapidly under high pressure, NATIVE EXTRACTS maintain the molecules’ natural integrity.

Committed to conscious manufacturing, Cellular Extracts are created using purified, deionised, rain-harvested water and less plant material than past processes to produce a natural True to Nature plant extract, that is water-wise, repurposes waste, traceable to source, transparent in composition.

Black Currant Cellular Extract’s additional phyto-compounds include quercetin, phenolics, amino acids and more offer benefits such as skin depigmentation, antioxidant, anti-inflammatory and hair growth boosting properties.

Recommended usage level: 0.5 – 1% concentrate; 1 – 5% dilution

Blackberry Cellular Extract

(INCI: Rubus fruticosus Fruit Extract; Rubus fruticosus (Blackberry) Fruit Extract)

Delivering “true to nature” hydrophilic plant profiles. Cellular Extraction harnesses the species’ water-soluble blueprint of phyto-compounds and their derivatives (the entourage), in their synergistic relationships, as they exist in the cell.

Extracted rapidly under high pressure, NATIVE EXTRACTS maintain the molecules’ natural integrity.

Committed to conscious manufacturing, Cellular Extracts are created using purified, deionised, rain-harvested water and less plant material than past processes to produce a natural True to Nature plant extract, that is water-wise, repurposes waste, traceable to source, transparent in composition.

Reflected by their purple colouring, it is packed with anthocyanins, which publicly available studies have shown may have the potential to support skin from drying effects of the sun.

Recommended usage level: 0.5 – 1% concentrate; 1 – 5% dilution

Blackwood Wattle Cellular Extract

(INCI: Acacia melanoxylon Leaf Extract)

Delivering “true to nature” hydrophilic plant profiles. Cellular Extraction harnesses the species’ water-soluble blueprint of phyto-compounds and their derivatives (the entourage), in their synergistic relationships, as they exist in the cell. Extracted rapidly under high pressure, NATIVE EXTRACTS maintain the molecules’ natural integrity.

Committed to conscious manufacturing, Cellular Extracts are created using purified, deionised, rain-harvested water and less plant material than past processes to produce a natural True to Nature plant extract, that is water-wise, repurposes waste, traceable to source, transparent in composition.

The ideal partner for anti-ageing and blemish prone skin.

Recommended usage level: 0.5 – 1% concentrate; 1 – 5% dilution

Blue Cypress Leaf Cellular Extract

(INCI: Callitris Columellaris Leaf Extract)

Delivering “true to nature” hydrophilic plant profiles. Cellular Extraction harnesses the species’ water-soluble blueprint of phyto-compounds and their derivatives (the entourage), in their synergistic relationships, as they exist in the cell. Extracted rapidly under high pressure, NATIVE EXTRACTS maintain the molecules’ natural integrity.

Committed to conscious manufacturing, Cellular Extracts are created using purified, deionised, rain-harvested water and less plant material than past processes to produce a natural True to Nature plant extract, that is water-wise, repurposes waste, traceable to source, transparent in composition.

Known for its rare blue essential oil, explore the unique profile of a species that has evolved in extreme environmental conditions for its use in anti-ageing and antioxidant cosmetics.

Recommended usage level: 0.5 – 1% concentrate; 1 – 5% dilution

Blue Butterfly Pea Cellular Extract

(INCI: Clitoria ternatea Flower Extract)

Delivering “true to nature” hydrophilic plant profiles. Cellular Extraction harnesses the species’ water-soluble blueprint of phyto-compounds and their derivatives (the entourage), in their synergistic relationships, as they exist in the cell.

Extracted rapidly under high pressure, NATIVE EXTRACTS maintain the molecules’ natural integrity.

Committed to conscious manufacturing, Cellular Extracts are created using purified, deionised, rain-harvested water and less plant material than past processes to produce a natural True to Nature plant extract, that is water-wise, repurposes waste, traceable to source, transparent in composition.

Butterfly Pea Cellular Extract’s unique synergy between it’s compounds delivers a powerhouse of natural ingredients to consider for haircare, blemished skin conditions, premature ageing and more.

Recommended usage level: 0.5 – 1% concentrate; 1 – 5% dilution

Blueberry Cellular Extract

(INCI: Vaccinium corymbosum Fruit Extract)

Delivering “true to nature” hydrophilic plant profiles. Cellular Extraction harnesses the species’ water-soluble blueprint of phyto-compounds and their derivatives (the entourage), in their synergistic relationships, as they exist in the cell.

Extracted rapidly under high pressure, NATIVE EXTRACTS maintain the molecules’ natural integrity.

Committed to conscious manufacturing, Cellular Extracts are created using purified, deionised, rain-harvested water and less plant material than past processes to produce a natural True to Nature plant extract, that is water-wise, repurposes waste, traceable to source, transparent in composition.

Blueberry Cellular Extract delivers natural molecules in a water-soluble format, including organic acids, anthocyanins, phenolics, chlorogenic acid and flavone glycosides skin for depigmentation, anti-ageing and antioxidant properties.

Recommended usage level: 0.5 – 1% concentrate; 1 – 5% dilution

Broccoli Cellular Extract

(INCI: Brassica oleracea italica Extract)

Delivering “true to nature” hydrophilic plant profiles. Cellular Extraction harnesses the species’ water-soluble blueprint of phyto-compounds and their derivatives (the entourage), in their synergistic relationships, as they exist in the cell.

Extracted rapidly under high pressure, NATIVE EXTRACTS maintain the molecules’ natural integrity.

Committed to conscious manufacturing, Cellular Extracts are created using purified, deionised, rain-harvested water and less plant material than past processes to produce a natural True to Nature plant extract, that is water-wise, repurposes waste, traceable to source, transparent in composition.

Broccoli Cellular Extract is packed full of antioxidants, providing super-food power to your skin & hair.

Recommended usage level: 0.5 – 1% concentrate; 1 – 5% dilution

Bush Tomato Cellular Extract

(INCI: Solanum Centrale Fruit Extract)

Delivering “true to nature” hydrophilic plant profiles. Cellular Extraction harnesses the species’ water-soluble blueprint of phyto-compounds and their derivatives (the entourage), in their synergistic relationships, as they exist in the cell. Extracted rapidly under high pressure, NATIVE EXTRACTS maintain the molecules’ natural integrity.

Committed to conscious manufacturing, Cellular Extracts are created using purified, deionised, rain-harvested water and less plant material than past processes to produce a natural True to Nature plant extract, that is water-wise, repurposes waste, traceable to source, transparent in composition.

Traditionally the roots of the plant were used as a medicine but in cosmetics the power of this plant is harnessed for use in preventative ageing luminating the skin and providing powerful antioxidant protection.

Recommended usage level: 0.5 – 1% concentrate; 1 – 5% dilution.

Brussels Sprout Cellular Extract

(INCI: Brassica oleracea gemmifera Extract)

Delivering “true to nature” hydrophilic plant profiles. Cellular Extraction harnesses the species’ water-soluble blueprint of phyto-compounds and their derivatives (the entourage), in their synergistic relationships, as they exist in the cell.

Extracted rapidly under high pressure, NATIVE EXTRACTS maintain the molecules’ natural integrity.

Committed to conscious manufacturing, Cellular Extracts are created using purified, deionised, rain-harvested water and less plant material than past processes to produce a natural True to Nature plant extract, that is water-wise, repurposes waste, traceable to source, transparent in composition.

Broccoli Cellular Extract is packed full of antioxidants, providing super-food power to your skin & hair.

Recommended usage level: 0.5 – 1% concentrate; 1 – 5% dilution

Casuarina Cellular Extract

(INCI: Allocasuarina verticillata (synonym Casuarina stricta) Leaf Extract)

Delivering “true to nature” hydrophilic plant profiles. Cellular Extraction harnesses the species’ water-soluble blueprint of phyto-compounds and their derivatives (the entourage), in their synergistic relationships, as they exist in the cell. Extracted rapidly under high pressure, NATIVE EXTRACTS maintain the molecules’ natural integrity.

Committed to conscious manufacturing, Cellular Extracts are created using purified, deionised, rain-harvested water and less plant material than past processes to produce a natural True to Nature plant extract, that is water-wise, repurposes waste, traceable to source, transparent in composition.

A powerful antioxidant for global skin protection.

Recommended usage level: 0.5 – 1% concentrate; 1 – 5% dilution

Cinnamon Myrtle Cellular Extract

(INCI: Backhousia Myrtifolia Leaf Extract)

Delivering “true to nature” hydrophilic plant profiles. Cellular Extraction harnesses the species’ water-soluble blueprint of phyto-compounds and their derivatives (the entourage), in their synergistic relationships, as they exist in the cell. Extracted rapidly under high pressure, NATIVE EXTRACTS maintain the molecules’ natural integrity.

Committed to conscious manufacturing, Cellular Extracts are created using purified, deionised, rain-harvested water and less plant material than past processes to produce a natural True to Nature plant extract, that is water-wise, repurposes waste, traceable to source, transparent in composition.

Perfect for use in anti-ageing and skin protection formula's.

Recommended usage level: 0.5 – 1% concentrate; 1 – 5% dilution

Coleus Cellular Extract

(INCI: Coleus barbadus Root Extract)

Delivering “true to nature” hydrophilic plant profiles. Cellular Extraction harnesses the species’ water-soluble blueprint of phyto-compounds and their derivatives (the entourage), in their synergistic relationships, as they exist in the cell.

Extracted rapidly under high pressure, NATIVE EXTRACTS maintain the molecules’ natural integrity.

Committed to conscious manufacturing, Cellular Extracts are created using purified, deionised, rain-harvested water and less plant material than past processes to produce a natural True to Nature plant extract, that is water-wise, repurposes waste, traceable to source, transparent in composition.

Several compounds extracted from the root of Coleus forskohlii show potential to help visibly improve common skin issues around breakouts and sensitive skin.

Recommended usage level: 0.5 – 1% concentrate; 1 – 5% dilution

Coffee Fruit Cellular Extract

(INCI: Coffea arabica Fruit Extract)

Delivering “true to nature” hydrophilic plant profiles. Cellular Extraction harnesses the species’ water-soluble blueprint of phyto-compounds and their derivatives (the entourage), in their synergistic relationships, as they exist in the cell.

Extracted rapidly under high pressure, NATIVE EXTRACTS maintain the molecules’ natural integrity.

Committed to conscious manufacturing, Cellular Extracts are created using purified, deionised, rain-harvested water and less plant material than past processes to produce a natural True to Nature plant extract, that is water-wise, repurposes waste, traceable to source, transparent in composition.

Coffee Fruit Cellular Extract unique synergy between it's compounds delivers a powerhouse of natural ingredients to provide an energising boost to ageing skins, fine lines and wrinkles.

Recommended usage level: 0.5 – 1% concentrate; 1 – 5% dilution

Comfrey Cellular Extract

(INCI: Symphytum officinale Leaf Extract)

Delivering “true to nature” hydrophilic plant profiles. Cellular Extraction harnesses the species’ water-soluble blueprint of phyto-compounds and their derivatives (the entourage), in their synergistic relationships, as they exist in the cell.

Extracted rapidly under high pressure, NATIVE EXTRACTS maintain the molecules’ natural integrity.

Committed to conscious manufacturing, Cellular Extracts are created using purified, deionised, rain-harvested water and less plant material than past processes to produce a natural True to Nature plant extract, that is water-wise, repurposes waste, traceable to source, transparent in composition.

A herb-derived ingredient that can be used in skincare to soothe, hydrate, and protect the skin.

Recommended usage level: 0.5 – 1% concentrate; 1 – 5% dilution

Cornflower Cellular Extract

(INCI: Centaurea cyanus Flower Extract)

Delivering “true to nature” hydrophilic plant profiles. Cellular Extraction harnesses the species’ water-soluble blueprint of phyto-compounds and their derivatives (the entourage), in their synergistic relationships, as they exist in the cell.

Extracted rapidly under high pressure, NATIVE EXTRACTS maintain the molecules’ natural integrity.

Committed to conscious manufacturing, Cellular Extracts are created using purified, deionised, rain-harvested water and less plant material than past processes to produce a natural True to Nature plant extract, that is water-wise, repurposes waste, traceable to source, transparent in composition.

Cornflower Cellular Extract is naturally multifunctional, and this new generation extract is an antioxidant, inflammation reduction powerhouse with potent levels of natural phyto-compounds such as protocatechuic acid, amino and organic acids.

Recommended usage level: 0.5 – 1% concentrate; 1 – 5% dilution

Cucumber Cellular Extract

(INCI: Cucumis sativus Fruit Extract; Cucumis sativus (Cucumber) Fruit Extract)

Delivering “true to nature” hydrophilic plant profiles. Cellular Extraction harnesses the species’ water-soluble blueprint of phyto-compounds and their derivatives (the entourage), in their synergistic relationships, as they exist in the cell.

Extracted rapidly under high pressure, NATIVE EXTRACTS maintain the molecules’ natural integrity.

Committed to conscious manufacturing, Cellular Extracts are created using purified, deionised, rain-harvested water and less plant material than past processes to produce a natural True to Nature plant extract, that is water-wise, repurposes waste, traceable to source, transparent in composition.

Cucumber Cellular Extract’s phyto-compounds may be considered for broad premature ageing products, in addition to attenuating certain skin disorders and improving skin and hair.

Recommended usage level: 0.5 – 1% concentrate; 1 – 5% dilution

Davidson Plum Cellular Extract

(INCI: Davidsonia Jerseyana Fruit Extract)

Delivering “true to nature” hydrophilic plant profiles. Cellular Extraction harnesses the species’ water-soluble blueprint of phyto-compounds and their derivatives (the entourage), in their synergistic relationships, as they exist in the cell. Extracted rapidly under high pressure, NATIVE EXTRACTS maintain the molecules’ natural integrity.

Committed to conscious manufacturing, Cellular Extracts are created using purified, deionised, rain-harvested water and less plant material than past processes to produce a natural True to Nature plant extract, that is water-wise, repurposes waste, traceable to source, transparent in composition.

The NE Davidson Plum Cellular Extract is packed with an exciting range of phyto-compounds including gallic acid, ellagic acid, quercetin, organic + amino acids, sugars, and anthocyanin which is responsible for its dark red colour. The synergism of these powerful compounds delivers exciting new possibilities for natural solutions to premature ageing, age lines, radiance and luminosity, acne prone skin, suppleness, inflammation and antioxidant applications in skincare. A

available as a concentrate and as a 10% dilution.

Recommended usage level: 0.5 – 1%
concentrate; 1 – 5% dilution

Desert Lime Cellular Extract

(INCI: Citrus Glauca Fruit Extract)

Delivering “true to nature” hydrophilic plant profiles. Cellular Extraction harnesses the species’ water-soluble blueprint of phyto-compounds and their derivatives (the entourage), in their synergistic relationships, as they exist in the cell. Extracted rapidly under high pressure, NATIVE EXTRACTS maintain the molecules’ natural integrity.

Committed to conscious manufacturing, Cellular Extracts are created using purified, deionised, rain-harvested water and less plant material than past processes to produce a natural True to Nature plant extract, that is water-wise, repurposes waste, traceable to source, transparent in composition.

Desert Lime has adapted over centuries to survive the harsh bushland of semi-arid Australian outback and is leading the next generation of advanced natural cosmetics. The fruit has been wild harvested by Aboriginal people for centuries and was referred to as the “native kumquat” by European settlers who used it to make jams and jellies.

NE Desert Lime Cellular Extract is a storehouse of natural compounds, to explore for hydration, barrier function and premature ageing all in one source. Multiple compounds = multifunctional single plant extracts. The NE Desert Lime Cellular Extract delivers natural molecules in a water-soluble format, including organic and amino acids, phenolics, ferulic acid and more.

Recommended usage level: 0.5 – 1%
concentrate; 1 – 5% dilution

Dragonfruit Cellular Extract

(INCI: Hylocereus costaricensis Fruit Extract)

Delivering “true to nature” hydrophilic plant profiles. Cellular Extraction harnesses the species’ water-soluble blueprint of phyto-compounds and their derivatives (the entourage), in their synergistic relationships, as they exist in the cell.

Extracted rapidly under high pressure, NATIVE EXTRACTS maintain the molecules’ natural integrity.

Committed to conscious manufacturing, Cellular Extracts are created using purified, deionised, rain-harvested water and less plant material than past processes to produce a natural True to Nature plant extract, that is water-wise, repurposes waste, traceable to source, transparent in composition.

Given its high levels of Vitamin C, Dragonfruit supports collagen production and protects skin from premature ageing, reversing ageing skin.

Recommended usage level: 0.5 – 1% concentrate; 1 – 5% dilution

Elderflower Cellular Extract

(INCI: Sambucus nigra Flower Extract)

Delivering “true to nature” hydrophilic plant profiles. Cellular Extraction harnesses the species’ water-soluble blueprint of phyto-compounds and their derivatives (the entourage), in their synergistic relationships, as they exist in the cell.

Extracted rapidly under high pressure, NATIVE EXTRACTS maintain the molecules’ natural integrity.

Committed to conscious manufacturing, Cellular Extracts are created using purified, deionised, rain-harvested water and less plant material than past processes to produce a natural True to Nature plant extract, that is water-wise, repurposes waste, traceable to source, transparent in composition.

Elderflower Cellular Extract is recommended in antioxidant and blemish-prone skin formulas due to its composition rich in phyto-compounds.

Recommended usage level: 0.5 – 1% concentrate; 1 – 5% dilution

Echinacea Cellular Extract

(INCI: Echinacea purpurea Root Extract)

Delivering “true to nature” hydrophilic plant profiles. Cellular Extraction harnesses the species’ water-soluble blueprint of phyto-compounds and their derivatives (the entourage), in their synergistic relationships, as they exist in the cell.

Extracted rapidly under high pressure, NATIVE EXTRACTS maintain the molecules’ natural integrity.

Committed to conscious manufacturing, Cellular Extracts are created using purified, deionised, rain-harvested water and less plant material than past processes to produce a natural True to Nature plant extract, that is water-wise, repurposes waste, traceable to source, transparent in composition.

A natural healer, Echinacea contains active substances like cichoric acid that may help with skin concerns such as aging, hydration, wrinkling, and skin damage from UVA rays

Recommended usage level: 0.5 – 1% concentrate; 1 – 5% dilution

Emu Apple Cellular Extract

(INCI: Kunzea Pomifera Fruit Extract)

Delivering “true to nature” hydrophilic plant profiles. Cellular Extraction harnesses the species’ water-soluble blueprint of phyto-compounds and their derivatives (the entourage), in their synergistic relationships, as they exist in the cell. Extracted rapidly under high pressure, NATIVE EXTRACTS maintain the molecules’ natural integrity.

Committed to conscious manufacturing, Cellular Extracts are created using purified, deionised, rain-harvested water and less plant material than past processes to produce a natural True to Nature plant extract, that is water-wise, repurposes waste, traceable to source, transparent in composition. A true global player in brightening, anti-acne & anti-inflammatory.

Extensive peer reviewed research identifies (by compound) what the extract profile may be considered for, this untapped little fruit could be the next big premature ageing phyto-nutrient powerhouse for moisturising ageing skin and inflammation.

Recommended usage level: 0.5 – 1% concentrate; 1 – 5% dilution.

Emu Bush Cellular Extract

(INCI: Eremophila Longifolia Leaf Extract)

Delivering “true to nature” hydrophilic plant profiles. Cellular Extraction harnesses the species’ water-soluble blueprint of phyto-compounds and their derivatives (the entourage), in their synergistic relationships, as they exist in the cell. Extracted rapidly under high pressure, NATIVE EXTRACTS maintain the molecules’ natural integrity.

Committed to conscious manufacturing, Cellular Extracts are created using purified, deionised, rain-harvested water and less plant material than past processes to produce a natural True to Nature plant extract, that is water-wise, repurposes waste, traceable to source, transparent in composition.

NE Emu Bush is a unique Australian pioneer species that has evolved over centuries to create powerful mechanisms to store vast quantities of phyto-compounds needed to survive the extreme conditions of the Australian Desert. Records show its leaves were used by Aboriginal tribes to wash sores and cuts.

The NE Emu Bush Cellular Extract delivers natural molecules in a water-soluble format, including chlorogenic acid (CGA), ferulic acid, isorhamnetin, quercetin, verbascoside and more. Ideal for acne blemishes, soothing skin, signs of ageing and after sun care. Available as a concentrate and as a 10% dilution.

Recommended usage level: 0.5 – 1% concentrate; 1 – 5% dilution

Euphorbia Cellular Extract

(INCI: Euphorbia hirta Extract)

Delivering “true to nature” hydrophilic plant profiles. Cellular Extraction harnesses the species’ water-soluble blueprint of phyto-compounds and their derivatives (the entourage), in their synergistic relationships, as they exist in the cell. Extracted rapidly under high pressure, NATIVE EXTRACTS maintain the molecules’ natural integrity.

Committed to conscious manufacturing, Cellular Extracts are created using purified, deionised, rain-harvested water and less plant material than past processes to produce a natural True to Nature plant extract, that is water-wise, repurposes waste, traceable to source, transparent in composition.

Euphorbia reduces redness and soothes sensitive skins.

Recommended usage level: 0.5 – 1% concentrate; 1 – 5% dilution

Eyebright Cellular Extract

(INCI: Euphrasia officinalis Extract)

Delivering “true to nature” hydrophilic plant profiles. Cellular Extraction harnesses the species’ water-soluble blueprint of phyto-compounds and their derivatives (the entourage), in their synergistic relationships, as they exist in the cell.

Extracted rapidly under high pressure, NATIVE EXTRACTS maintain the molecules’ natural integrity.

Committed to conscious manufacturing, Cellular Extracts are created using purified, deionised, rain-harvested water and less plant material than past processes to produce a natural True to Nature plant extract, that is water-wise, repurposes waste, traceable to source, transparent in composition.

Eyebright is a herb that has a long history of healing that continues to this day through restoring our skin barrier and increases skin hydration

Recommended usage level: 0.5 – 1% concentrate; 1 – 5% dilution

Finger Lime Caviar Cellular Extract

(INCI: Citrus Australasica Fruit Extract)

Delivering “true to nature” hydrophilic plant profiles. Cellular Extraction harnesses the species’ water-soluble blueprint of phyto-compounds and their derivatives (the entourage), in their synergistic relationships, as they exist in the cell. Extracted rapidly under high pressure, NATIVE EXTRACTS maintain the molecules’ natural integrity.

Committed to conscious manufacturing, Cellular Extracts are created using purified, deionised, rain-harvested water and less plant material than past processes to produce a natural True to Nature plant extract, that is water-wise, repurposes waste, traceable to source, transparent in composition.

The NE Finger Lime Caviar Cellular Extract delivers the natural molecules this botanical species can offer in a water-soluble format, including limocitrin, tryptophan, flavone-C-glycoside, flavonoid glycosides, organic acids, amino acids and phenolics, to power your products naturally. These exotic “finger shaped” fruits are bursting with tiny pearls or caviar, loaded with exciting water-soluble phyto-compounds making it an ideal choice for barrier function, hydration, reactive skin conditions, blemished skin and wound healing.

Available as a concentrate or as a 10% dilution.

Recommended usage level: 0.5 – 1% concentrate; 1 – 5% dilution

Flame Tree Cellular Extract

(INCI: Brachychiton Acerifolius Flower Extract)

Delivering “true to nature” hydrophilic plant profiles. Cellular Extraction harnesses the species’ water-soluble blueprint of phyto-compounds and their derivatives (the entourage), in their synergistic relationships, as they exist in the cell. Extracted rapidly under high pressure, NATIVE EXTRACTS maintain the molecules’ natural integrity.

Committed to conscious manufacturing, Cellular Extracts are created using purified, deionised, rain-harvested water and less plant material than past processes to produce a natural True to Nature plant extract, that is water-wise, repurposes waste, traceable to source, transparent in composition.

Flame Tree is famous for its bright red bell-shaped flowers with 5 fused petals that cover the tree when it is leafless. It reduces redness, repairs skin and under eye and supports vitamin C.

Recommended usage level: 0.5 – 1% concentrate; 1 – 5% dilution.

Frangipani Cellular Extract

(INCI: Plumeria rubra Flower Extract)

ering “true to nature” hydrophilic plant profiles. Cellular Extraction harnesses the species’ water-soluble blueprint of phyto-compounds and their derivatives (the entourage), in their synergistic relationships, as they exist in the cell.

Extracted rapidly under high pressure, NATIVE EXTRACTS maintain the molecules’ natural integrity.

Committed to conscious manufacturing, Cellular Extracts are created using purified, deionised, rain-harvested water and less plant material than past processes to produce a natural True to Nature plant extract, that is water-wise, repurposes waste, traceable to source, transparent in composition.

The NE Frangipani Cellular Extract delivers a range of phyto-compound. Sesquiterpene is believed to have powerful inflammation reduction properties, as well as coumarins, chlorogenic acid and benzoic acids.

Recommended usage level: 0.5 – 1% concentrate; 1 – 5% dilution

Flannel Flower Cellular Extract

(INCI: Actinotus Helianthi Flower Extract)

Delivering “true to nature” hydrophilic plant profiles. Cellular Extraction harnesses the species’ water-soluble blueprint of phyto-compounds and their derivatives (the entourage), in their synergistic relationships, as they exist in the cell. Extracted rapidly under high pressure, NATIVE EXTRACTS maintain the molecules’ natural integrity.

Committed to conscious manufacturing, Cellular Extracts are created using purified, deionised, rain-harvested water and less plant material than past processes to produce a natural True to Nature plant extract, that is water-wise, repurposes waste, traceable to source, transparent in composition.

A potent wound healer for many centuries, under eyes are restored and premature ageing slowed.

Recommended usage level: 0.5 – 1% concentrate; 1 – 5% dilution.

Gardenia Cellular Extract

(INCI: Gardenia florida Flower Extract; Gardenia jasminoids Flower Extract)

Delivering “true to nature” hydrophilic plant profiles. Cellular Extraction harnesses the species’ water-soluble blueprint of phyto-compounds and their derivatives (the entourage), in their synergistic relationships, as they exist in the cell.

Extracted rapidly under high pressure, NATIVE EXTRACTS maintain the molecules’ natural integrity.

Committed to conscious manufacturing, Cellular Extracts are created using purified, deionised, rain-harvested water and less plant material than past processes to produce a natural True to Nature plant extract, that is water-wise, repurposes waste, traceable to source, transparent in composition.

Gardenia Florida fruit extract is used in cosmetics as an antioxidant to help with skin tone, texture, and elasticity. It can also help with signs of aging, and has anti-inflammatory properties that can soothe dry or tired skin.

Recommended usage level: 0.5 – 1% concentrate; 1 – 5% dilution

Ginger Cellular Extract

(INCI: Zingibar officinalis Root Extract; Zingibar officinale (Ginger) Root Extract)

Delivering “true to nature” hydrophilic plant profiles. Cellular Extraction harnesses the species’ water-soluble blueprint of phyto-compounds and their derivatives (the entourage), in their synergistic relationships, as they exist in the cell.

Extracted rapidly under high pressure, NATIVE EXTRACTS maintain the molecules’ natural integrity.

Committed to conscious manufacturing, Cellular Extracts are created using purified, deionised, rain-harvested water and less plant material than past processes to produce a natural True to Nature plant extract, that is water-wise, repurposes waste, traceable to source, transparent in composition.

Ginger is loaded with nutrients and the NE Ginger Cellular Extract’s phyto-compound gingerol is known for its powerful anti-inflammatory and antioxidant effects.

Considered this powerful compound for blemishes, reactive skin, age lines, premature aging, inflammation, hair maintenance and protection and more.

Recommended usage level: 0.5 – 1% concentrate; 1 – 5% dilution

Ginseng (Siberian) Cellular Extract

(INCI: Eleutherococcus senticosus Root Extract; Acanthopanax Senticosus Root Extract)

Delivering “true to nature” hydrophilic plant profiles. Cellular Extraction harnesses the species’ water-soluble blueprint of phyto-compounds and their derivatives (the entourage), in their synergistic relationships, as they exist in the cell.

Extracted rapidly under high pressure, NATIVE EXTRACTS maintain the molecules’ natural integrity.

Committed to conscious manufacturing, Cellular Extracts are created using purified, deionised, rain-harvested water and less plant material than past processes to produce a natural True to Nature plant extract, that is water-wise, repurposes waste, traceable to source, transparent in composition.

Ginseng can be used in skincare products to treat skin inflammation, acne, dandruff, and hair loss.

Recommended usage level: 0.5 – 1% concentrate; 1 – 5% dilution

Gotu Kola Cellular Extract

(INCI: Centella asiatica Extract)

Delivering “true to nature” hydrophilic plant profiles. Cellular Extraction harnesses the species’ water-soluble blueprint of phyto-compounds and their derivatives (the entourage), in their synergistic relationships, as they exist in the cell.

Extracted rapidly under high pressure, NATIVE EXTRACTS maintain the molecules’ natural integrity.

Committed to conscious manufacturing, Cellular Extracts are created using purified, deionised, rain-harvested water and less plant material than past processes to produce a natural True to Nature plant extract, that is water-wise, repurposes waste, traceable to source, transparent in composition.

Centella asiatica is used as an active compound in skin care preparations due to its antioxidant, anti-inflammatory, anticellulite and antiaging activity.

Recommended usage level: 0.5 – 1% concentrate; 1 – 5% dilution

Green Coffee Bean Cellular Extract

(INCI: Coffea arabica Seed Extract)

Delivering “true to nature” hydrophilic plant profiles. Cellular Extraction harnesses the species’ water-soluble blueprint of phyto-compounds and their derivatives (the entourage), in their synergistic relationships, as they exist in the cell.

Extracted rapidly under high pressure, NATIVE EXTRACTS maintain the molecules’ natural integrity.

Committed to conscious manufacturing, Cellular Extracts are created using purified, deionised, rain-harvested water and less plant material than past processes to produce a natural True to Nature plant extract, that is water-wise, repurposes waste, traceable to source, transparent in composition.

Its high antioxidant potential is attributed to the synergistic interaction of chlorogenic acid (caffeoylquinic acid), caffeine and trigonelline among other antioxidant compounds

Recommended usage level: 0.5 – 1% concentrate; 1 – 5% dilution

Green Duo Cellular Extract

(INCI: Brassica oleracea italica Extract, Silybum marianum Seed Extract)

Delivering “true to nature” hydrophilic plant profiles. Cellular Extraction harnesses the species’ water-soluble blueprint of phyto-compounds and their derivatives (the entourage), in their synergistic relationships, as they exist in the cell.

Extracted rapidly under high pressure, NATIVE EXTRACTS maintain the molecules’ natural integrity.

Committed to conscious manufacturing, Cellular Extracts are created using purified, deionised, rain-harvested water and less plant material than past processes to produce a natural True to Nature plant extract, that is water-wise, repurposes waste, traceable to source, transparent in composition.

The Green Duo Cellular Extract represents unique combinations of the water-soluble phyto-compounds extracted from Milk Thistle (Silybum marianum Seed), and Broccoli (Brassica oleracea).

With over 8 powerful natural compounds combined, this blend will have a major impact in the cosmetic industry offering something exciting for potential applications in hydration, premature aging and reactive skin conditions.

Recommended usage level: 0.5 – 1% concentrate; 1 – 5% dilution

Green Tea Cellular Extract

(INCI: Camellia sinensis Leaf Extract)

Delivering “true to nature” hydrophilic plant profiles. Cellular Extraction harnesses the species’ water-soluble blueprint of phyto-compounds and their derivatives (the entourage), in their synergistic relationships, as they exist in the cell.

Extracted rapidly under high pressure, NATIVE EXTRACTS maintain the molecules’ natural integrity.

Committed to conscious manufacturing, Cellular Extracts are created using purified, deionised, rain-harvested water and less plant material than past processes to produce a natural True to Nature plant extract, that is water-wise, repurposes waste, traceable to source, transparent in composition.

Green tea is rich in antioxidants, particularly catechins, which help protect the skin from damage caused by free radicals, reducing signs of aging. It also has anti-inflammatory properties that soothe irritated skin and can help reduce redness and acne breakouts.

Recommended usage level: 0.5 – 1% concentrate; 1 – 5% dilution

Hawthorn Berries Cellular Extract

(INCI: Crataegus monogyna Fruit Extract)

Delivering “true to nature” hydrophilic plant profiles. Cellular Extraction harnesses the species’ water-soluble blueprint of phyto-compounds and their derivatives (the entourage), in their synergistic relationships, as they exist in the cell.

Extracted rapidly under high pressure, NATIVE EXTRACTS maintain the molecules’ natural integrity.

Committed to conscious manufacturing, Cellular Extracts are created using purified, deionised, rain-harvested water and less plant material than past processes to produce a natural True to Nature plant extract, that is water-wise, repurposes waste, traceable to source, transparent in composition.

Hawthorn berries are packed with antioxidants that help protect the skin from environmental damage and promote a youthful complexion. They also have anti-inflammatory and antimicrobial properties, which can help calm irritated skin and reduce acne-related inflammation.

Recommended usage level: 0.5 – 1% concentrate; 1 – 5% dilution

Holy Basil Cellular Extract

(INCI: Ocimum sanctum Extract)

Delivering “true to nature” hydrophilic plant profiles. Cellular Extraction harnesses the species’ water-soluble blueprint of phyto-compounds and their derivatives (the entourage), in their synergistic relationships, as they exist in the cell.

Extracted rapidly under high pressure, NATIVE EXTRACTS maintain the molecules’ natural integrity.

Committed to conscious manufacturing, Cellular Extracts are created using purified, deionised, rain-harvested water and less plant material than past processes to produce a natural True to Nature plant extract, that is water-wise, repurposes waste, traceable to source, transparent in composition.

Holy Basil, also known as tulsi, has powerful antioxidant and anti-inflammatory properties that help protect the skin from premature aging and environmental stressors. It also aids in balancing oily skin and reducing acne by preventing bacterial growth and soothing irritation.

Recommended usage level: 0.5 – 1% concentrate; 1 – 5% dilution

Honeysuckle Cellular Extract

(INCI: Lonicera Japonica Flower Extract)

Delivering “true to nature” hydrophilic plant profiles. Cellular Extraction harnesses the species’ water-soluble blueprint of phyto-compounds and their derivatives (the entourage), in their synergistic relationships, as they exist in the cell.

Extracted rapidly under high pressure, NATIVE EXTRACTS maintain the molecules’ natural integrity.

Committed to conscious manufacturing, Cellular Extracts are created using purified, deionised, rain-harvested water and less plant material than past processes to produce a natural True to Nature plant extract, that is water-wise, repurposes waste, traceable to source, transparent in composition.

Honeysuckle has natural anti-inflammatory and antibacterial properties, making it effective in soothing irritated skin and reducing breakouts. It also helps to hydrate and brighten the skin, promoting a healthier, more even complexion.

Recommended usage level: 0.5 – 1% concentrate; 1 – 5% dilution

Infitrio™

(INCI: Citrus aurantium amara Peel Extract, Citrus aurantium amara (Bitter Orange) Peel Extract)

Introducing the latest Inflammaging complex, Infitrio™ combining a synergy of extracts to fight both both internal and external initiators of inflammation.

Recommended usage level: 1-3%

Illawarra Plum Cellular Extract

(INCI: Podocarpus elatus Fruit Extract)

Delivering “true to nature” hydrophilic plant profiles. Cellular Extraction harnesses the species’ water-soluble blueprint of phyto-compounds and their derivatives (the entourage), in their synergistic relationships, as they exist in the cell.

Extracted rapidly under high pressure, NATIVE EXTRACTS maintain the molecules’ natural integrity.

Committed to conscious manufacturing, Cellular Extracts are created using purified, deionised, rain-harvested water and less plant material than past processes to produce a natural True to Nature plant extract, that is water-wise, repurposes waste, traceable to source, transparent in composition.

Illawarra plum extract is rich in antioxidants, which help protect the skin from oxidative stress and environmental damage, promoting a youthful appearance. It also has hydrating and soothing properties, making it effective in calming irritated skin and improving skin elasticity.

Recommended usage level: 0.5 – 1% concentrate; 1 – 5% dilution

Jacaranda Cellular Extract

(INCI: Jacaranda mimosifolia Flower Extract)

Delivering “true to nature” hydrophilic plant profiles. Cellular Extraction harnesses the species’ water-soluble blueprint of phyto-compounds and their derivatives (the entourage), in their synergistic relationships, as they exist in the cell. Extracted rapidly under high pressure, NATIVE EXTRACTS maintain the molecules’ natural integrity.

Committed to conscious manufacturing, Cellular Extracts are created using purified, deionised, rain-harvested water and less plant material than past processes to produce a natural True to Nature plant extract, that is water-wise, repurposes waste, traceable to source, transparent in composition.

Jacaranda extract is rich in antioxidants, which help protect the skin from oxidative stress and environmental damage, promoting a youthful glow. It also has soothing and anti-inflammatory properties, making it effective in calming irritated skin and reducing redness.

Recommended usage level: 0.5 – 1% concentrate; 1 – 5% dilution

Kakadu Plum Cellular Extract

(INCI: Terminalia Ferdinandiana Fruit Extract)

Delivering “true to nature” hydrophilic plant profiles. Cellular Extraction harnesses the species’ water-soluble blueprint of phyto-compounds and their derivatives (the entourage), in their synergistic relationships, as they exist in the cell. Extracted rapidly under high pressure, NATIVE EXTRACTS maintain the molecules’ natural integrity.

Committed to conscious manufacturing, Cellular Extracts are created using purified, deionised, rain-harvested water and less plant material than past processes to produce a natural True to Nature plant extract, that is water-wise, repurposes waste, traceable to source, transparent in composition. The NE Kakadu Plum Cellular Extract delivers stable, natural, active and biological/recycling vitamin C in a water-soluble format.

This botanical species, is the highest source of vitamin C, offering other natural molecules in a water-soluble format that contains natural antioxidant capacity. Kakadu Plum also known as Gubinge, Billygoat Plum or Murunga, is a native tree from Australia, the fruit is wild harvested by Indigenous communities exclusively in the Kimberleys, Northern Territory and Arnhem Land. Indigenous Australians have used this fruit extensively for food, its healing properties and traditional medicine.

Ideal for anti-ageing, wellness and haircare.
Available as a concentrate or as a 10% dilution.

Recommended usage level: 0.5 – 1%
concentrate; 1 – 5% dilution

Kale Cellular Extract

(INCI: Brassica oleracea capitata Leaf Extract; Brassica oleracea capitata (Cabbage) Leaf Extract)

Delivering “true to nature” hydrophilic plant profiles. Cellular Extraction harnesses the species’ water-soluble blueprint of phyto-compounds and their derivatives (the entourage), in their synergistic relationships, as they exist in the cell.

Extracted rapidly under high pressure, NATIVE EXTRACTS maintain the molecules’ natural integrity.

Committed to conscious manufacturing, Cellular Extracts are created using purified, deionised, rain-harvested water and less plant material than past processes to produce a natural True to Nature plant extract, that is water-wise, repurposes waste, traceable to source, transparent in composition.

Kale extract is packed with vitamins A, C, and K, which help brighten the complexion, fight signs of aging, and promote overall skin health. Its antioxidant-rich properties protect the skin from environmental damage and support collagen production, enhancing skin elasticity and firmness.

Recommended usage level: 0.5 – 1%
concentrate; 1 – 5% dilution

Kangaroo Apple Cellular Extract

(INCI: Solanum Aviculare Fruit Extract)

Delivering “true to nature” hydrophilic plant profiles. Cellular Extraction harnesses the species’ water-soluble blueprint of phyto-compounds and their derivatives (the entourage), in their synergistic relationships, as they exist in the cell. Extracted rapidly under high pressure, NATIVE EXTRACTS maintain the molecules’ natural integrity.

Committed to conscious manufacturing, Cellular Extracts are created using purified, deionised, rain-harvested water and less plant material than past processes to produce a natural True to Nature plant extract, that is water-wise, repurposes waste, traceable to source, transparent in composition. The fruit has been used as an anti-inflammatory poultice on swollen joints.

Extensive peer reviewed research identifies the extract’s compounds potential use for inflammation, blemishes and reactive/atopic skin conditions.

Recommended usage level: 0.5 – 1% concentrate; 1 – 5% dilution.

Kangaroo Paw Cellular Extract

(INCI: Anigozanthos Flavidus Flower/Leaf Extract)

Delivering “true to nature” hydrophilic plant profiles. Cellular Extraction harnesses the species’ water-soluble blueprint of phyto-compounds and their derivatives (the entourage), in their synergistic relationships, as they exist in the cell. Extracted rapidly under high pressure, NATIVE EXTRACTS maintain the molecules’ natural integrity.

Committed to conscious manufacturing, Cellular Extracts are created using purified, deionised, rain-harvested water and less plant material than past processes to produce a natural True to Nature plant extract, that is water-wise, repurposes waste, traceable to source, transparent in composition.

NE Kangaroo Paw is sourced from a local organic farm in the Byron Bay Hinterlands, the Kangaroo Paw flower offers an interesting range of phyto-compounds known for their positive effects on skin improvement, hydration and premature ageing. Also known as “Nollamara, Kurulbrang or Yonga Marra” in the Nyoongar language, Indigenous Australians have used this fuzzy vibrant flower in preparing traditional medicine.

The NE Kangaroo Paw Cellular Extract delivers the natural molecules this botanical species can offer in a water-soluble format, including amino acids, rutin, phenolics and more.

Recommended usage level: 0.5 – 1% concentrate; 1 – 5% dilution

Kelp Cellular Extract

(INCI: Fucus vesiculosus Extract)

Delivering “true to nature” hydrophilic plant profiles. Cellular Extraction harnesses the species’ water-soluble blueprint of phyto-compounds and their derivatives (the entourage), in their synergistic relationships, as they exist in the cell.

Extracted rapidly under high pressure, NATIVE EXTRACTS maintain the molecules’ natural integrity.

Committed to conscious manufacturing, Cellular Extracts are created using purified, deionised, rain-harvested water and less plant material than past processes to produce a natural True to Nature plant extract, that is water-wise, repurposes waste, traceable to source, transparent in composition.

Kelp extract is rich in vitamins, minerals, and antioxidants, helping to nourish and hydrate the skin while protecting it from environmental stressors. It also promotes detoxification, improving skin tone and texture by reducing inflammation and soothing irritation.

Recommended usage level: 0.5 – 1% concentrate; 1 – 5% dilution

Lemon Aspen Cellular Extract

(INCI: Acronychia acidula Fruit Extract)

Delivering “true to nature” hydrophilic plant profiles. Cellular Extraction harnesses the species’ water-soluble blueprint of phyto-compounds and their derivatives (the entourage), in their synergistic relationships, as they exist in the cell. Extracted rapidly under high pressure, NATIVE EXTRACTS maintain the molecules’ natural integrity.

Committed to conscious manufacturing, Cellular Extracts are created using purified, deionised, rain-harvested water and less plant material than past processes to produce a natural True to Nature plant extract, that is water-wise, repurposes waste, traceable to source, transparent in composition.

Supporting Vitamin C and restoring luminosity and skin defenses.

Recommended usage level: 0.5 – 1% concentrate; 1 – 5% dilution

Lemon Balm Cellular Extract

(INCI: Melissa officinalis Extract)

Delivering “true to nature” hydrophilic plant profiles. Cellular Extraction harnesses the species’ water-soluble blueprint of phyto-compounds and their derivatives (the entourage), in their synergistic relationships, as they exist in the cell.

Extracted rapidly under high pressure, NATIVE EXTRACTS maintain the molecules’ natural integrity.

Committed to conscious manufacturing, Cellular Extracts are created using purified, deionised, rain-harvested water and less plant material than past processes to produce a natural True to Nature plant extract, that is water-wise, repurposes waste, traceable to source, transparent in composition.

Lemon balm extract has powerful anti-inflammatory and antimicrobial properties, making it effective in soothing irritated skin and reducing redness. It also helps to brighten the complexion and protect the skin from environmental stressors with its antioxidant-rich content.

Recommended usage level: 0.5 – 1% concentrate; 1 – 5% dilution

Lemon Myrtle Cellular Extract

(INCI: Backhousia Citriodora Leaf Extract)

Delivering “true to nature” hydrophilic plant profiles. Cellular Extraction harnesses the species’ water-soluble blueprint of phyto-compounds and their derivatives (the entourage), in their synergistic relationships, as they exist in the cell. Extracted rapidly under high pressure, NATIVE EXTRACTS maintain the molecules’ natural integrity.

Committed to conscious manufacturing, Cellular Extracts are created using purified, deionised, rain-harvested water and less plant material than past processes to produce a natural True to Nature plant extract, that is water-wise, repurposes waste, traceable to source, transparent in composition.

Lemon Myrtle is sourced from the Byron Bay Hinterland, NSW, Australia and is also known as Lemon Scented Myrtle, Sweet Verbena Tree, Sweet Verbena Myrtle and Lemon Scented Ironwood. Well known for its essential oil profile, NE Cellular Extraction technology enables its water-soluble compounds to be incorporated into formulations.

Lemon Myrtle is fast becoming an Australian Hero ingredient in skin and hair/ scalp care featuring in lotions, scrubs, scalp serums, lip balms, shampoos/ conditioners, beauty glow products and more.

Recommended usage level: 0.5 – 1% concentrate; 1 – 5% dilution

Lemon Scented Tea Tree Cellular Extract

(INCI: Leptospermum Petersonii Leaf Extract)

Delivering “true to nature” hydrophilic plant profiles. Cellular Extraction harnesses the species’ water-soluble blueprint of phyto-compounds and their derivatives (the entourage), in their synergistic relationships, as they exist in the cell. Extracted rapidly under high pressure, NATIVE EXTRACTS maintain the molecules’ natural integrity.

Committed to conscious manufacturing, Cellular Extracts are created using purified, deionised, rain-harvested water and less plant material than past processes to produce a natural True to Nature plant extract, that is water-wise, repurposes waste, traceable to source, transparent in composition.

It smells like a lemon rainforest and has a beautiful eucalyptus and lemon aroma. Used in Aboriginal Australian tribes for generations to boost immunity, the leaves are gathered from the wild for use as a medicine. A natural anti-bacterial perfect for blemish prone skin.

Recommended usage level: 0.5 – 1% concentrate; 1 – 5% dilution

Licorice Cellular Extract

(INCI: Glycyrrhiza glabra Root Extract)

Delivering “true to nature” hydrophilic plant profiles. Cellular Extraction harnesses the species’ water-soluble blueprint of phyto-compounds and their derivatives (the entourage), in their synergistic relationships, as they exist in the cell.

Extracted rapidly under high pressure, NATIVE EXTRACTS maintain the molecules’ natural integrity.

Committed to conscious manufacturing, Cellular Extracts are created using purified, deionised, rain-harvested water and less plant material than past processes to produce a natural True to Nature plant extract, that is water-wise, repurposes waste, traceable to source, transparent in composition.

Licorice extract is known for its brightening properties, helping to reduce the appearance of dark spots and hyperpigmentation for a more even skin tone. It also has anti-inflammatory and antioxidant benefits, soothing irritated skin and protecting it from environmental damage.

Recommended usage level: 0.5 – 1% concentrate; 1 – 5% dilution

Lilli Pilli Riberry Cellular Extract

(INCI: Syzygium Leuhmannii Fruit Extract)

Delivering “true to nature” hydrophilic plant profiles. Cellular Extraction harnesses the species’ water-soluble blueprint of phyto-compounds and their derivatives (the entourage), in their synergistic relationships, as they exist in the cell. Extracted rapidly under high pressure, NATIVE EXTRACTS maintain the molecules’ natural integrity.

Committed to conscious manufacturing, Cellular Extracts are created using purified, deionised, rain-harvested water and less plant material than past processes to produce a natural True to Nature plant extract, that is water-wise, repurposes waste, traceable to source, transparent in composition.

An anti-ageing, anti-inflammatory, repairing, firming and lightening agent. It is suitable for collagen production and supports vitamin C. It prevents UVA/UVB damage

Recommended usage level: 0.5 – 1% concentrate; 1 – 5% dilution.

Linden Flower Cellular Extract

(INCI: Tilia cordata Flower Extract)

Delivering “true to nature” hydrophilic plant profiles. Cellular Extraction harnesses the species’ water-soluble blueprint of phyto-compounds and their derivatives (the entourage), in their synergistic relationships, as they exist in the cell.

Extracted rapidly under high pressure, NATIVE EXTRACTS maintain the molecules’ natural integrity.

Committed to conscious manufacturing, Cellular Extracts are created using purified, deionised, rain-harvested water and less plant material than past processes to produce a natural True to Nature plant extract, that is water-wise, repurposes waste, traceable to source, transparent in composition.

Linden flower extract is known for its calming and anti-inflammatory properties, making it ideal for soothing sensitive or irritated skin. It also hydrates and protects the skin, helping to improve elasticity and promote a healthy, radiant complexion.

Recommended usage level: 0.5 – 1% concentrate; 1 – 5% dilution

Mountain Pepper Berry Cellular Extract

(INCI: Tasmannia Lanceolata Fruit Extract)

Delivering “true to nature” hydrophilic plant profiles. Cellular Extraction harnesses the species’ water-soluble blueprint of phyto-compounds and their derivatives (the entourage), in their synergistic relationships, as they exist in the cell. Extracted rapidly under high pressure, NATIVE EXTRACTS maintain the molecules’ natural integrity.

Committed to conscious manufacturing, Cellular Extracts are created using purified, deionised, rain-harvested water and less plant material than past processes to produce a natural True to Nature plant extract, that is water-wise, repurposes waste, traceable to source, transparent in composition. Mountain Pepper Berry or Tasmanian Native Pepper is traditionally used for its antiseptic properties and flavour, derived from the high terpenoid content.

The NE Mountain Pepper Berry Cellular Extract delivers the natural molecules this botanical species can offer in a water-soluble format for formulations targeting improving skin condition, structure, anti-inflammation, anti-glycation, haircare applications.

Recommended usage level: 0.5 – 1% concentrate; 1 – 5% dilution

Mountain Pepper Leaf Cellular Extract

(INCI: Tasmannia lanceolata Leaf Extract)

Delivering “true to nature” hydrophilic plant profiles. Cellular Extraction harnesses the species’ water-soluble blueprint of phyto-compounds and their derivatives (the entourage), in their synergistic relationships, as they exist in the cell. Extracted rapidly under high pressure, NATIVE EXTRACTS maintain the molecules’ natural integrity.

Committed to conscious manufacturing, Cellular Extracts are created using purified, deionised, rain-harvested water and less plant material than past processes to produce a natural True to Nature plant extract, that is water-wise, repurposes waste, traceable to source, transparent in composition.

Specially designed for sensitive skin to protect and reduce skin sensibility. Perfect for post-shave and sunburn brief's.

Recommended usage level: 0.5 – 1% concentrate; 1 – 5% dilution

Native Bush Mint Cellular Extract

(INCI: Prostanthera rotundifolia Leaf Extract)

Delivering “true to nature” hydrophilic plant profiles. Cellular Extraction harnesses the species’ water-soluble blueprint of phyto-compounds and their derivatives (the entourage), in their synergistic relationships, as they exist in the cell. Extracted rapidly under high pressure, NATIVE EXTRACTS maintain the molecules’ natural integrity.

Committed to conscious manufacturing, Cellular Extracts are created using purified, deionised, rain-harvested water and less plant material than past processes to produce a natural True to Nature plant extract, that is water-wise, repurposes waste, traceable to source, transparent in composition.

Protecting skin from the inside, out with its natural antioxidant capabilities.

Recommended usage level: 0.5 – 1% concentrate; 1 – 5% dilution

Native Orange Pearl Cellular Extract

(INCI: Malcura Cochinchinensis Leaf Extract)

Delivering “true to nature” hydrophilic plant profiles. Cellular Extraction harnesses the species’ water-soluble blueprint of phyto-compounds and their derivatives (the entourage), in their synergistic relationships, as they exist in the cell. Extracted rapidly under high pressure, NATIVE EXTRACTS maintain the molecules’ natural integrity.

Committed to conscious manufacturing, Cellular Extracts are created using purified, deionised, rain-harvested water and less plant material than past processes to produce a natural True to Nature plant extract, that is water-wise, repurposes waste, traceable to source, transparent in composition.

An age prevention hero, anti-wrinkle & collagen booster, skin repairing and firming - perfect for skin barrier briefs.

Recommended usage level: 0.5 – 1% concentrate; 1 – 5% dilution.

Native Juniper Cellular Extract

(INCI: Myoporum Insulare Extract)

Delivering “true to nature” hydrophilic plant profiles. Cellular Extraction harnesses the species’ water-soluble blueprint of phyto-compounds and their derivatives (the entourage), in their synergistic relationships, as they exist in the cell. Extracted rapidly under high pressure, NATIVE EXTRACTS maintain the molecules’ natural integrity.

Committed to conscious manufacturing, Cellular Extracts are created using purified, deionised, rain-harvested water and less plant material than past processes to produce a natural True to Nature plant extract, that is water-wise, repurposes waste, traceable to source, transparent in composition.

It produces sweet astringent purple berries. A key ingredient in treatments for acne, oily skin, and dandruff, helping to balance sebum production.

Recommended usage level: 0.5 – 1% concentrate; 1 – 5% dilution

Native Raspberry Cellular Extract

(INCI: Rubus Parvifolius Fruit Extract)

Delivering “true to nature” hydrophilic plant profiles. Cellular Extraction harnesses the species’ water-soluble blueprint of phyto-compounds and their derivatives (the entourage), in their synergistic relationships, as they exist in the cell. Extracted rapidly under high pressure, NATIVE EXTRACTS maintain the molecules’ natural integrity.

Committed to conscious manufacturing, Cellular Extracts are created using purified, deionised, rain-harvested water and less plant material than past processes to produce a natural True to Nature plant extract, that is water-wise, repurposes waste, traceable to source, transparent in composition.

With a high composition of amino acids, this active ingredient fuels skin to fight off daily aggressors and protect the skin barrier.

Recommended usage level: 0.5 – 1% concentrate; 1 – 5% dilution

Native River Mint Cellular Extract

(INCI: *Mentha australis* Leaf Extract)

Delivering “true to nature” hydrophilic plant profiles. Cellular Extraction harnesses the species’ water-soluble blueprint of phyto-compounds and their derivatives (the entourage), in their synergistic relationships, as they exist in the cell. Extracted rapidly under high pressure, NATIVE EXTRACTS maintain the molecules’ natural integrity.

Committed to conscious manufacturing, Cellular Extracts are created using purified, deionised, rain-harvested water and less plant material than past processes to produce a natural True to Nature plant extract, that is water-wise, repurposes waste, traceable to source, transparent in composition.

The NE Native River Mint Cellular Extract delivers all the natural molecules this botanical species can offer in a water-soluble format, including amino and organic acids, phenolics, flavonoid glycosides, rosmarinic acid, terpenoids and methoxy flavonoids to power your products naturally. While native to all states, NATIVE EXTRACTS source their Native River Mint from the South Australia Riverlands region grown by their Indigenous Grower, Dominic Smith (Pundi Produce) using a water efficient aquaponics process.

There is a unique synergy between the phyto compounds in the NE Native River Mint Cellular Extract that make this Australian Botanical a unique plant profile, with a standout phyto-compound, rosmarinic acid, which is well-known for its anti-inflammatory, UV protection, anti-wrinkle, anti-scarring and anti-microbial properties.

Recommended usage level: 0.5 – 1% concentrate; 1 – 5% dilution

Native Seaweed Tasmanian Kelp Extract

(INCI: *Durvillea Potatorum* Extract)

Collected by Kelp harvesters from clean, unpolluted waters from the shores of King Island, Tasmania. Ethically sourced, it is only harvested from the shores after storms have torn it from the rocks and cast onto the beaches.

Consider these powerful phyto-compounds in supporting radiance and luminosity, hair products, premature ageing, anti-glycation, collagen and elastin support and blemished and reactive skin possibilities.

Recommended usage level: 1 – 2% concentrate; 3 – 6% dilution.

Native Snowflower Cellular Extract

(INCI: Melaluca Alternifolia Leaf Extract)

Delivering “true to nature” hydrophilic plant profiles. Cellular Extraction harnesses the species’ water-soluble blueprint of phyto-compounds and their derivatives (the entourage), in their synergistic relationships, as they exist in the cell. Extracted rapidly under high pressure, NATIVE EXTRACTS maintain the molecules’ natural integrity.

Committed to conscious manufacturing, Cellular Extracts are created using purified, deionised, rain-harvested water and less plant material than past processes to produce a natural True to Nature plant extract, that is water-wise, repurposes waste, traceable to source, transparent in composition.

Snowflower, otherwise known as Tea Tree, is sourced from the mother plants on a pristine organic land inland Northern Rivers region. A common household remedy with a long history of medicinal uses. Today, this species is valued for its antimicrobial properties, and the NE Snowflower Cellular Extract delivers compounds, including protocatechuic acid, phenolics, flavonoid glycosides, quercetin, kaempferol and more, that are beneficial for numerous hair and skin applications.

Recommended usage level: 0.5 – 1% concentrate; 1 – 5% dilution

Quandong Cellular Extract

(INCI: Santalum Acuminatum Fruit Extract)

Delivering “true to nature” hydrophilic plant profiles. Cellular Extraction harnesses the species’ water-soluble blueprint of phyto-compounds and their derivatives (the entourage), in their synergistic relationships, as they exist in the cell. Extracted rapidly under high pressure, NATIVE EXTRACTS maintain the molecules’ natural integrity.

Committed to conscious manufacturing, Cellular Extracts are created using purified, deionised, rain-harvested water and less plant material than past processes to produce a natural True to Nature plant extract, that is water-wise, repurposes waste, traceable to source, transparent in composition.

The desert Quandong is a unique Australian fruit found widely throughout the deserts, and semi- arid areas of Southern Australia. It has striking, shiny red fruit. Often referred to as ‘goorti’ (Nurungga) or ‘native peach’, the fruit has been a significant food source for Indigenous and the oil-rich kernels were used as anti-inflammatory and antibacterial pastes, to treat skin disorders, and used as a “hair conditioning oil”.

The NE Quandong Cellular Extract delivers the natural molecules this botanical species can offer in a water-soluble format, including amino and organic acids, phenolics, chlorogenic acid, anthocyanins, flavonoid glycosides, rutin and more.

Ideal for UV protection, anti-inflammatory and antioxidant. Available as a concentrate and as a 10% dilution.

Recommended usage level: 0.5 – 1% concentrate; 1 – 5% dilution

Queen Garnet Cellular Extract

(INCI: Prunus salicina Fruit Extract)

Queen Garnet was cultivated by Australian scientists, resulting in a powerhouse of bioactive compounds.

Due to longer 'hang time' on the tree, it produces more antioxidants than the average fruit. Protected by global plant breeding rights and listed on the Therapeutic Goods Administration (TGA), this plum packs the anthocyanin punch! NATIVE EXTRACTS' advances in Cellular Extraction deliver a species' water-soluble phyto-compounds, its water-soluble entourage.

The natural molecules are transferred from the cell and suspended in a liquid medium to incorporate in finished product formulations. NATIVE EXTRACTS' Queen Garnet extracts are packed with phyto-compounds, including Anthocyanins - Cyanidin 3 Glycoside, Chlorogenic Acid, Rutin, Epicatechin, Quercetin, and more.

Its unprecedented levels of Anthocyanin are indicated by its deep red and purple pigment. Anthocyanin is known to have antioxidant, antimicrobial and anti-inflammatory effects, making this an ideal option for inclusion in products targeting anti-ageing, antioxidant and anti-inflammatory.

Recommended usage level: 0.5 - 1%

Rainforest Lime Cellular Extract

(INCI: Citrus australis Fruit Extract)

Delivering "true to nature" hydrophilic plant profiles. Cellular Extraction harnesses the species' water-soluble blueprint of phyto-compounds and their derivatives (the entourage), in their synergistic relationships, as they exist in the cell. Extracted rapidly under high pressure, NATIVE EXTRACTS maintain the molecules' natural integrity.

Committed to conscious manufacturing, Cellular Extracts are created using purified, deionised, rain-harvested water and less plant material than past processes to produce a natural True to Nature plant extract, that is water-wise, repurposes waste, traceable to source, transparent in composition.

Providing a natural source of AHA's for gentle exfoliation resulting in improved skin luminosity.

Recommended usage level: 0.5 – 1% concentrate; 1 – 5% dilution

Red Rainforest Ginger Cellular Extract

(INCI: Alpinia Caerulea Extract)

Delivering “true to nature” hydrophilic plant profiles. Cellular Extraction harnesses the species’ water-soluble blueprint of phyto-compounds and their derivatives (the entourage), in their synergistic relationships, as they exist in the cell. Extracted rapidly under high pressure, NATIVE EXTRACTS maintain the molecules’ natural integrity.

Committed to conscious manufacturing, Cellular Extracts are created using purified, deionised, rain-harvested water and less plant material than past processes to produce a natural True to Nature plant extract, that is water-wise, repurposes waste, traceable to source, transparent in composition.

Revitalises the skin and awakens skin tone luminosity with natural antioxidant capabilities.

Recommended usage level: 0.5 – 1% concentrate; 1 – 5% dilution

Rosehip Cellular Extract

(INCI: Rosa canina Fruit Extract)

Delivering “true to nature” hydrophilic plant profiles. Cellular Extraction harnesses the species’ water-soluble blueprint of phyto-compounds and their derivatives (the entourage), in their synergistic relationships, as they exist in the cell.

Extracted rapidly under high pressure, NATIVE EXTRACTS maintain the molecules’ natural integrity.

Committed to conscious manufacturing, Cellular Extracts are created using purified, deionised, rain-harvested water and less plant material than past processes to produce a natural True to Nature plant extract, that is water-wise, repurposes waste, traceable to source, transparent in composition.

Rosehip extract is rich in vitamins A and C, which rejuvenate the skin, reduce scars and fine lines, and promote a radiant, even complexion. For hair, its essential fatty acids deeply nourish the scalp, strengthen strands, and enhance overall shine and softness.

Recommended usage level: 0.5 – 1% concentrate; 1 – 5% dilution

Rosella Cellular Extract

(INCI: Hibiscus Sabdariffa Flower Extract)

Delivering “true to nature” hydrophilic plant profiles. Cellular Extraction harnesses the species’ water-soluble blueprint of phyto-compounds and their derivatives (the entourage), in their synergistic relationships, as they exist in the cell. Extracted rapidly under high pressure, NATIVE EXTRACTS maintain the molecules’ natural integrity.

Committed to conscious manufacturing, Cellular Extracts are created using purified, deionised, rain-harvested water and less plant material than past processes to produce a natural True to Nature plant extract, that is water-wise, repurposes waste, traceable to source, transparent in composition.

The exotic Australian Rosella is indigenous to eastern parts of New South Wales and Queensland. From beautiful yellow or white flowers come red, candy-like calyxes. The Cellular Extract results in phyto-compounds with various functions for skin and hair support.

The NE Rosella Cellular Extract delivers the natural molecules this botanical species can offer in a water-soluble format, including anthocyanins, organic acids, phenolics, chlorogenic acid and more making it an ideal choice for skin lightening/ depigmentation, photo ageing, dark circles and anti-ageing. Available as a concentrate and as a 10% dilution.

Recommended usage level: 0.5 – 1% concentrate; 1 – 5% dilution

Salt Bush Cellular Extract

(INCI: Atriplex Nummularia)

Delivering “true to nature” hydrophilic plant profiles. Cellular Extraction harnesses the species’ water-soluble blueprint of phyto-compounds and their derivatives (the entourage), in their synergistic relationships, as they exist in the cell. Extracted rapidly under high pressure, NATIVE EXTRACTS maintain the molecules’ natural integrity.

Committed to conscious manufacturing, Cellular Extracts are created using purified, deionised, rain-harvested water and less plant material than past processes to produce a natural True to Nature plant extract, that is water-wise, repurposes waste, traceable to source, transparent in composition.

Ideal for acne and problematic skin as historically the leaves were medicinal, often added to water as skin cleansers for sores, burns, and wounds.

Recommended usage level: 0.5 – 1% concentrate; 1 – 5% dilution

Sea Fennel Cellular Extract

(INCI: Crithmum maritimum Extract)

Delivering “true to nature” hydrophilic plant profiles. Cellular Extraction harnesses the species’ water-soluble blueprint of phyto-compounds and their derivatives (the entourage), in their synergistic relationships, as they exist in the cell.

Extracted rapidly under high pressure, NATIVE EXTRACTS maintain the molecules’ natural integrity.

Committed to conscious manufacturing, Cellular Extracts are created using purified, deionised, rain-harvested water and less plant material than past processes to produce a natural True to Nature plant extract, that is water-wise, repurposes waste, traceable to source, transparent in composition.

Sea fennel extract is rich in antioxidants and minerals, which help protect the skin from environmental damage and promote a healthy, youthful complexion. Its hydrating and soothing properties support skin regeneration, improve elasticity, and reduce the appearance of fine lines and wrinkles.

Recommended usage level: 0.5 – 1% concentrate; 1 – 5% dilution

Sea Parsley Cellular Extract

(INCI: Apium Prostratum Extract)

Delivering “true to nature” hydrophilic plant profiles. Cellular Extraction harnesses the species’ water-soluble blueprint of phyto-compounds and their derivatives (the entourage), in their synergistic relationships, as they exist in the cell. Extracted rapidly under high pressure, NATIVE EXTRACTS maintain the molecules’ natural integrity.

Committed to conscious manufacturing, Cellular Extracts are created using purified, deionised, rain-harvested water and less plant material than past processes to produce a natural True to Nature plant extract, that is water-wise, repurposes waste, traceable to source, transparent in composition.

Well known for its high vitamin C content and antioxidant effects for the skin.

Recommended usage level: 0.5 – 1% concentrate; 1 – 5% dilution

Silky Oil Grass Cellular Extract

(INCI: Cymbopogon Bombycinus Leaf Extract)

Delivering “true to nature” hydrophilic plant profiles. Cellular Extraction harnesses the species’ water-soluble blueprint of phyto-compounds and their derivatives (the entourage), in their synergistic relationships, as they exist in the cell. Extracted rapidly under high pressure, NATIVE EXTRACTS maintain the molecules’ natural integrity.

Committed to conscious manufacturing, Cellular Extracts are created using purified, deionised, rain-harvested water and less plant material than past processes to produce a natural True to Nature plant extract, that is water-wise, repurposes waste, traceable to source, transparent in composition.

Belonging to the same genus as Lemongrass, commonly known as Native Lemongrass. It provides under eye repair and collagen support.

Recommended usage level: 0.5 – 1% concentrate; 1 – 5% dilution

Snake Vine Cellular Extract

(INCI: Hibbertia Scandens Leaf Extract)

Delivering “true to nature” hydrophilic plant profiles. Cellular Extraction harnesses the species’ water-soluble blueprint of phyto-compounds and their derivatives (the entourage), in their synergistic relationships, as they exist in the cell. Extracted rapidly under high pressure, NATIVE EXTRACTS maintain the molecules’ natural integrity.

Committed to conscious manufacturing, Cellular Extracts are created using purified, deionised, rain-harvested water and less plant material than past processes to produce a natural True to Nature plant extract, that is water-wise, repurposes waste, traceable to source, transparent in composition. The plant historically formed a paste to ease the pain of arthritis and other inflammatory conditions.

The sap was widely used as an antiseptic. Now, it is predicted to be a major player in natural cosmetics for its composition of phyto-compounds that can be considered for their antioxidant, anti-inflammatory, and skin-illuminating capacity.

Recommended usage level: 0.5 – 1% concentrate; 1 – 5% dilution.

Starfruit Cellular Extract

(INCI: Averrhoa carambola Fruit Extract)

Delivering “true to nature” hydrophilic plant profiles. Cellular Extraction harnesses the species’ water-soluble blueprint of phyto-compounds and their derivatives (the entourage), in their synergistic relationships, as they exist in the cell.

Extracted rapidly under high pressure, NATIVE EXTRACTS maintain the molecules’ natural integrity.

Committed to conscious manufacturing, Cellular Extracts are created using purified, deionised, rain-harvested water and less plant material than past processes to produce a natural True to Nature plant extract, that is water-wise, repurposes waste, traceable to source, transparent in composition.

Starfruit extract is rich in antioxidants and vitamin C, which brighten the skin, reduce dark spots, and combat signs of aging. Its natural hydrating properties improve skin texture and leave it smooth, refreshed, and radiant.

Recommended usage level: 0.5 – 1% concentrate; 1 – 5% dilution

Strawberry Cellular Extract

(INCI: Fragaria ananassa Fruit Extract)

Delivering “true to nature” hydrophilic plant profiles. Cellular Extraction harnesses the species’ water-soluble blueprint of phyto-compounds and their derivatives (the entourage), in their synergistic relationships, as they exist in the cell. Extracted rapidly under high pressure, NATIVE EXTRACTS maintain the molecules’ natural integrity. Committed to conscious manufacturing, Cellular Extracts are created using purified, deionised, rain-harvested water and less plant material than past processes to produce a natural True to Nature plant extract, that is water-wise, repurposes waste, traceable to source, transparent in composition.

The NE Strawberry Cellular Extract's unique synergy between its compounds delivers a powerhouse of natural ingredients to consider ... along with beautiful new imagery to create unique content for your brand. While strawberry season often only lasts through summer, you can still reap the benefits of this phenomenal fruit year-round—as a powerful skincare ingredient!

Strawberries are not only healthy and delicious to eat but also work to maintain a healthy-looking, radiant complexion when used topically in skincare. The deep red colour and heart shape of strawberries make them sacred to Venus and Aphrodite. One may extend this to other goddesses of love and beauty, as well.

Recommended usage level: 0.5 – 1% concentrate; 1 – 5% dilution

Strawberry Gum Cellular Extract

(INCI: Eucalyptus Olida Leaf Extract)

Delivering “true to nature” hydrophilic plant profiles. Cellular Extraction harnesses the species’ water-soluble blueprint of phyto-compounds and their derivatives (the entourage), in their synergistic relationships, as they exist in the cell. Extracted rapidly under high pressure, NATIVE EXTRACTS maintain the molecules’ natural integrity.

Committed to conscious manufacturing, Cellular Extracts are created using purified, deionised, rain-harvested water and less plant material than past processes to produce a natural True to Nature plant extract, that is water-wise, repurposes waste, traceable to source, transparent in composition.

Suitable for de-pigmentation and redness reduction this anti-inflammatory active provides brighter and happier skin.

Recommended usage level: 0.5 – 1% concentrate; 1 – 5% dilution

Tasmanian Blue Gum Cellular Extract

(INCI: Eucalyptus Globulus Leaf Extract)

Delivering “true to nature” hydrophilic plant profiles. Cellular Extraction harnesses the species’ water-soluble blueprint of phyto-compounds and their derivatives (the entourage), in their synergistic relationships, as they exist in the cell. Extracted rapidly under high pressure, NATIVE EXTRACTS maintain the molecules’ natural integrity.

Committed to conscious manufacturing, Cellular Extracts are created using purified, deionised, rain-harvested water and less plant material than past processes to produce a natural True to Nature plant extract, that is water-wise, repurposes waste, traceable to source, transparent in composition.

Tasmania Blue Gum is most widely found in the open forests of Tasmania and southern Victoria, Eucalyptus globulus has evolved over millions of years and is a unique Australian ‘pioneer species’ commonly known as “southern blue gum”. It has the ability to create and store an abundance of powerful phyto-compounds.

The NE Tasmanian Blue Gum Cellular Extract delivers natural molecules in a water-soluble format, including phloroglucinol, quercetin, ellagic and gallic acid, phenolics and more. These powerful phyto-compounds make Tasmanian Blue Gum ideal for skin radiance and luminosity, hair products, premature ageing, anti-glycation, collagen and elastin support, and blemished and reactive skin.

Recommended usage level: 0.5 – 1% concentrate; 1 – 5% dilution

Tasmanian Lavender Cellular Extract

(INCI: Lavendula angustifolia Flower Extract)

Owing to to Tasmania's unique climate and nutrient rich soils, the Lavender grown there is known for its most delightful aroma. A traditional botanical, highly regarded throughout the hair and skin care industry, it is commonly used in fragrances and shampoo.

Beyond the volatile scent compounds, this species has even more to offer through its water-soluble phyto-compounds, which may be considered for their antioxidant, anti-inflammatory, antimicrobial, age lines and premature aging benefits.

The NE Tasmanian Lavender Cellular Extract delivers the natural molecules this botanical species can offer in a water-soluble format, including phenolics, anthocyanins, apigenin and more.

Recommended usage level: 0.5 – 1% concentrate; 1 – 5% dilution

Tulsi Cellular Extract

(INCI: Ocimum sanctum Extract)

Delivering “true to nature” hydrophilic plant profiles. Cellular Extraction harnesses the species' water-soluble blueprint of phyto-compounds and their derivatives (the entourage), in their synergistic relationships, as they exist in the cell.

Extracted rapidly under high pressure, NATIVE EXTRACTS maintain the molecules' natural integrity.

Committed to conscious manufacturing, Cellular Extracts are created using purified, deionised, rain-harvested water and less plant material than past processes to produce a natural True to Nature plant extract, that is water-wise, repurposes waste, traceable to source, transparent in composition.

Tulsi extract, known for its anti-inflammatory and antibacterial properties, helps reduce acne, redness, and irritation while promoting clearer skin. Its high antioxidant content also protects against environmental damage, improving skin tone and enhancing a healthy, glowing complexion.

Recommended usage level: 0.5 – 1% concentrate; 1 – 5% dilution

Vitamin C Trio Cellular Extract

(INCI: Terminalia ferdinandiana Fruit Extract, Citrus glauca Fruit Extract, Citrus australasica Fruit Extract)

Delivering “true to nature” hydrophilic plant profiles. Cellular Extraction harnesses the species’ water-soluble blueprint of phyto-compounds and their derivatives (the entourage), in their synergistic relationships, as they exist in the cell.

Extracted rapidly under high pressure, NATIVE EXTRACTS maintain the molecules’ natural integrity.

Committed to conscious manufacturing, Cellular Extracts are created using purified, deionised, rain-harvested water and less plant material than past processes to produce a natural True to Nature plant extract, that is water-wise, repurposes waste, traceable to source, transparent in composition.

The NE Vitamin C Trio Blend Cellular Extract represents unique combinations of the water-soluble phytocompounds extracted from Desert Lime, Finger Lime Caviar and Kakadu Plum.

With over 16 exciting natural compounds combined, this blend offers a source of natural vitamin C predominately from the Kakadu Plum (considered the species with the highest source of natural vitamin C (biological ascorbic acid)).

Recommended usage level: Concentrate: 1.0 - 2.0%, Standard 1:10, Wash on/off 3.0 - 6.0%

Waratah Cellular Extract

(INCI: Telopea Speciosissima Flower/Leaf Extract)

Delivering “true to nature” hydrophilic plant profiles. Cellular Extraction harnesses the species’ water-soluble blueprint of phyto-compounds and their derivatives (the entourage), in their synergistic relationships, as they exist in the cell. Extracted rapidly under high pressure, NATIVE EXTRACTS maintain the molecules’ natural integrity.

Committed to conscious manufacturing, Cellular Extracts are created using purified, deionised, rain-harvested water and less plant material than past processes to produce a natural True to Nature plant extract, that is water-wise, repurposes waste, traceable to source, transparent in composition.

Used by indigenous people as a medical tonic for centuries, the phyto-compounds, can be considered for firming and toning skin as well as numerous skin conditions, including reactive skin, fine lines and wrinkles.

Recommended usage level: 0.5 – 1% concentrate; 1 – 5% dilution.

Wattleseed Cellular Extract

(INCI: Acacia Victoriae Seed Extract)

Delivering “true to nature” hydrophilic plant profiles. Cellular Extraction harnesses the species’ water-soluble blueprint of phyto-compounds and their derivatives (the entourage), in their synergistic relationships, as they exist in the cell. Extracted rapidly under high pressure, NATIVE EXTRACTS maintain the molecules’ natural integrity.

Committed to conscious manufacturing, Cellular Extracts are created using purified, deionised, rain-harvested water and less plant material than past processes to produce a natural True to Nature plant extract, that is water-wise, repurposes waste, traceable to source, transparent in composition.

Medicinally, infusions and smoke treatments were widely used for headaches, skin complaints, aches and pains, infections and toothache. Now, its uses in blemish and problematic skin allow a unique story for your formulation.

Recommended usage level: 0.5 – 1% concentrate; 1 – 5% dilution

White Cypress Leaf Cellular Extract

(INCI: Callitris Glaucochyli Leaf Extract)

Delivering “true to nature” hydrophilic plant profiles. Cellular Extraction harnesses the species’ water-soluble blueprint of phyto-compounds and their derivatives (the entourage), in their synergistic relationships, as they exist in the cell. Extracted rapidly under high pressure, NATIVE EXTRACTS maintain the molecules’ natural integrity.

Committed to conscious manufacturing, Cellular Extracts are created using purified, deionised, rain-harvested water and less plant material than past processes to produce a natural True to Nature plant extract, that is water-wise, repurposes waste, traceable to source, transparent in composition.

With a wide range of interesting compounds, creating a multifunctional ingredient providing extra hydration to the skin, skin that looks firm and toned.

Recommended usage level: 0.5 – 1% concentrate; 1 – 5% dilution

Waxflower Leaf Cellular Extract

(INCI: Chamelaucium Uncinatum Extract)

Delivering “true to nature” hydrophilic plant profiles. Cellular Extraction harnesses the species’ water-soluble blueprint of phyto-compounds and their derivatives (the entourage), in their synergistic relationships, as they exist in the cell. Extracted rapidly under high pressure, NATIVE EXTRACTS maintain the molecules’ natural integrity.

Committed to conscious manufacturing, Cellular Extracts are created using purified, deionised, rain-harvested water and less plant material than past processes to produce a natural True to Nature plant extract, that is water-wise, repurposes waste, traceable to source, transparent in composition.

The primary compound in green tea, it contains polyphenolic compounds which act on a number of biochemical pathways, therefore yielding anti-oxidant and anti-inflammatory effects. A study demonstrated that Waxflower Leaf Cellular Extract suppress mushroom tyrosinase, which may be responsible for the skin-lightening effect.

Recommended usage level: 0.5 – 1% concentrate; 1 – 5% dilution.

Wild Orange Cellular Extract

(INCI: Capparis Mitchellii Extract)

Delivering “true to nature” hydrophilic plant profiles. Cellular Extraction harnesses the species’ water-soluble blueprint of phyto-compounds and their derivatives (the entourage), in their synergistic relationships, as they exist in the cell. Extracted rapidly under high pressure, NATIVE EXTRACTS maintain the molecules’ natural integrity.

Committed to conscious manufacturing, Cellular Extracts are created using purified, deionised, rain-harvested water and less plant material than past processes to produce a natural True to Nature plant extract, that is water-wise, repurposes waste, traceable to source, transparent in composition.

A key player in skin barrier reinforcement, it provides UVB protection, hydration, conditioning and wound healing.

Recommended usage level: 0.5 – 1% concentrate; 1 – 5% dilution

Willow Herb Cellular Extract

(INCI: Epilobium angustifolium Leaf Extract)

Delivering “true to nature” hydrophilic plant profiles. Cellular Extraction harnesses the species’ water-soluble blueprint of phyto-compounds and their derivatives (the entourage), in their synergistic relationships, as they exist in the cell. Extracted rapidly under high pressure, NATIVE EXTRACTS maintain the molecules’ natural integrity.

Committed to conscious manufacturing, Cellular Extracts are created using purified, deionised, rain-harvested water and less plant material than past processes to produce a natural True to Nature plant extract, that is water-wise, repurposes waste, traceable to source, transparent in composition.

The unique anti-inflammatory and antioxidant synergy found in this extract make it an integral ingredient for a wide range of superior topical applications. Provides fast relief from skin irritations.

Recommended usage level: 0.5 – 1% concentrate; 1 – 5% dilution

Yerba Mate Cellular Extract

(INCI: Ilex paraguariensis Leaf Extract)

Yerba mate is known by some as “the green tea of South America.” It is renowned for its nourishing properties in central and southern regions of South America and Argentina, and this practice of drinking it has remained relatively unchanged for over 500 years.

An antioxidant powerhouse, the NE Yerba Mate Cellular Extract’s phyto-compounds, including caffeine, can particularly be considered for firming and toning skin as well as numerous skin conditions, including blemishes, reactive skin, fine lines and wrinkles, inflammation, hair maintenance and protection and more.

The NE Yerba Mate Cellular Extract delivers a wide range of natural molecules in a water-soluble format, theobromine, phenolic acids, caffeine, chlorogenic acid, flavonoid glycoside, rutin, lignan, quercetin and kaempferol, to power your products naturally.

Recommended usage level: 0.5 – 1% concentrate; 1 – 5% dilution

Yuzu Cellular Extract

(INCI: Citrus junos Fruit Extract)

Delivering “true to nature” hydrophilic plant profiles. Cellular Extraction harnesses the species’ water-soluble blueprint of phyto-compounds and their derivatives (the entourage), in their synergistic relationships, as they exist in the cell.

Extracted rapidly under high pressure, NATIVE EXTRACTS maintain the molecules’ natural integrity.

Committed to conscious manufacturing, Cellular Extracts are created using purified, deionised, rain-harvested water and less plant material than past processes to produce a natural True to Nature plant extract, that is water-wise, repurposes waste, traceable to source, transparent in composition.

Yuzu extract is rich in vitamin C and antioxidants, which help brighten the skin, even out skin tone, and combat signs of aging. Its hydrating properties deeply moisturize the skin, leaving it smooth, radiant, and protected from environmental stressors.

Recommended usage level: 0.5 – 1% concentrate; 1 – 5% dilution

Contact Us

Interested?

Then contact the Infinity team
for more information:

T: 01344 354 900

E: technical@infinity-ingredients.co.uk

W: infinity-ingredients.co.uk