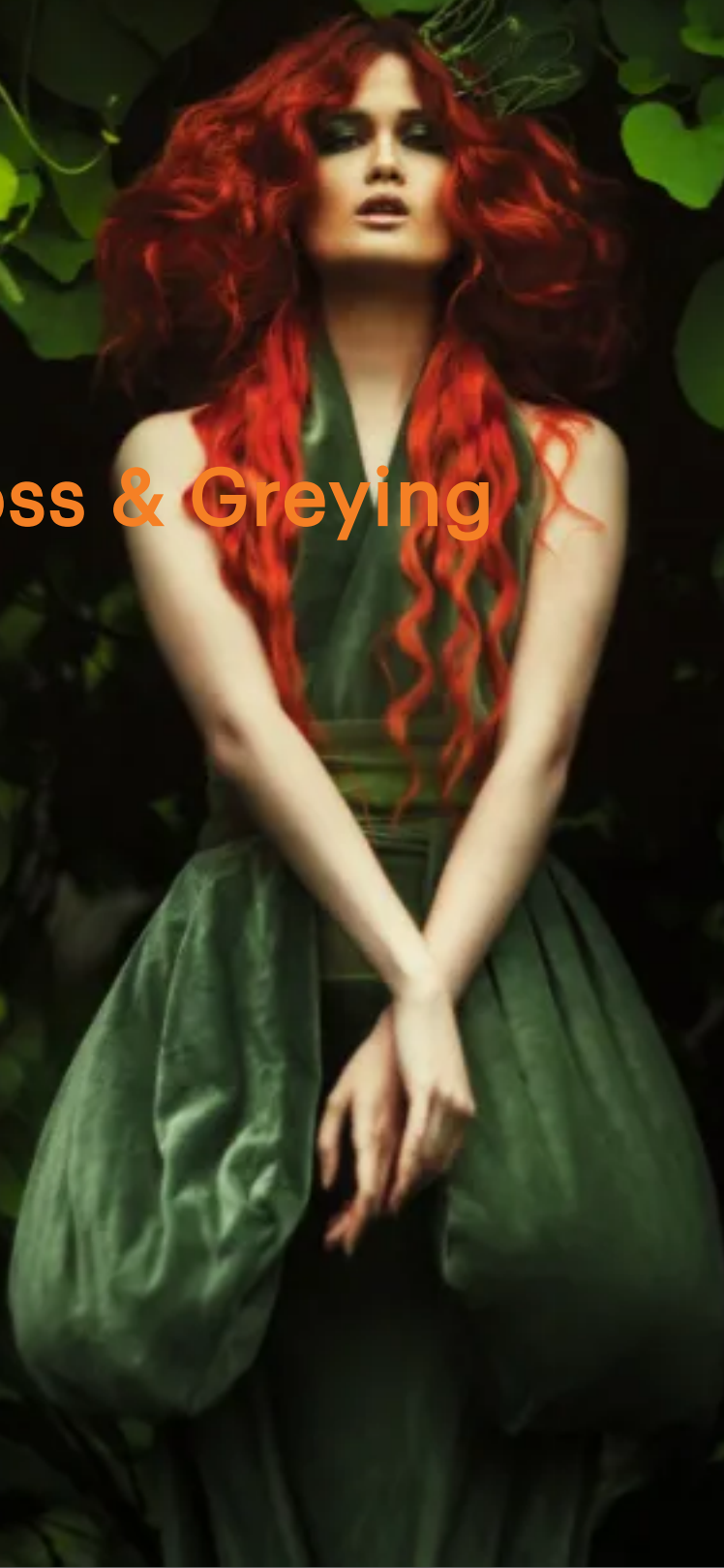


INFINITY GRADIENTS

Inspiring Cosmetics

Hair Loss & Greying



Hair Loss & Greying

5 α -Avocuta[®] T

(INCI: Butyl Avocadate, Tocopherol)

Avocado research has been one of Expanscience's areas of excellence for the past 40 years. This expertise is now illustrated by a number of patents.

5 α Avocuta[®] T contains plant esters extracted from avocado oil using a green chemical process. The purity of the active ingredient is guaranteed to be over 95% in esters through a molecular distillation process patented by Expanscience.

This active ingredient from green chemistry is sustainably sourced from Mexico, Peru and South Africa. 5 α Avocuta[®] T reduces excessive secretions of sebum from the scalp and skin, reduces the shiny appearance of the T-zone and decreases dandruff.

Recommended usage level: 0.5 – 2%

Andiroba oil

(INCI: Carapa guaianensis seed oil)

Andiroba oil is composed of fatty acids: myristic, palmitic, stearic, oleic, linoleic and linolenic. Studies show its use as a natural insect repellent, anti-cellulite and the activation of melanin production (acting preventively in the appearance of gray hair). It also offers an anti-inflammatory and regenerative action.

Recommended usage level: 2 - 5% as phytocosmetic in creams and moisturisers, shampoos, conditioners, creams, lotions and gels. Creams/ lotions and repellents 1 - 5%

AlphaComplete[®] Face

(INCI: Bisabolol and Melaleuca alternifolia leaf oil)

AlphaComplete[®] is a 100% natural and bactericidal alternative for the treatment of acne, itch relief and oil control. Result of a potent bactericidal mixture in natural and bacteriostatic in low concentrations.

Properties include antimicrobial, anti-irritant, anti-inflammatory, regenerative and healing properties, providing significant efficacy in the treatment of acne and excessive oiliness. It also has bacteriostatic and antiseptic action besides antifungal activity.

Recommended usage level: 1 - 5%

APPLE VINEGAR

(INCI: Vinegar)

APPLE VINEGAR provides cell regeneration by its AHA's content, as well as antioxidant and astringent properties.

Recommended usage level: 1 – 3%

AQUAXTREM™

(INCI: Propanediol, Aqua, Rheum Rhaponticum Root Extract)

Activates the own mechanisms of the skin for a long-lasting moisturisation.

Skin hydration from the inside. Stimulates the skin natural mechanisms of hydration through the activation of PPAR-γ. Stratum corneum resistance and cohesion. Improvement of barrier function and NMF. Normalises stratum corneum desquamation. Deep and long-lasting moisturisation.

Recommended usage level: 0.5 – 1.5 %

BAMBOO EXTRACT D.C. - M.S

(INCI: Propylene Glycol, Water, Bambusa Arundinacea Leaf Extract, Potassium Sorbate, Sodium Benzoate)

BAMBOO EXTRACT D.C. - M.S. is an extract in Propylene Glycol / water from the leaves of "Bambusa arundinacea (Retz.) Willd".

Bamboo leaves contain flavonoids, phenolic acids, lactones, polysaccharides, amino acids, and minerals. The extracts of Bambusa arundinacea have been used in Indian folk medicine to treat various inflammatory conditions.

Besides scavenging free radicals, chelating metal ions and inhibiting oxidase enzymes, the flavonoids of bamboo may increase the availability of endogenous antioxidants and the activity of antioxidant enzymes.

BAMBOO EXTRACT D.C. - M.S. is recommended to formulate cosmetic products with anti-irritant activity, the protection of skin and hair, integrity against oxidative processes and cosmetic products aimed at improving general blood circulation.

Flavonoids are vein-active and vessel-protective agents because they reduce the permeability and increase the resistance of blood capillaries.

This extract is of great use to formulate cosmetic products with anti-ageing, photo protection and hair colour protection and general blood circulation stimulation activities.

Recommended usage level: 0.5 - 5%

AVOCADO OIL

(INCI: Persea Gratissima (Avocado) Oil)

AVOCADO OIL is an emollient that stimulates the skin and improves dermal metabolism for an anti-ageing effect. It also provides moisturisation, wound healing, hair conditioning and repairing and anti-hair loss.

Recommended usage level: 0.5-5%

Bamboo MicroPlant 25

(INCI: Bambusa arundinacea stem extract)

Bamboo MicroPlant 25 is a micronised powder made from the exudates of bamboo stems. Rich in plant silica, this ingredient is an alternative silica for a wide variety of applications including absorption of sebum, abrasive toothpaste and as an opacifier.

Its abrasive properties make it an interesting ingredient for formulating solid toothpastes. Considered as a bulking agent providing naturality, Bamboo MicroPlant 25 is useful for formulating cosmetic products in solid and powder such as: mattifying powder, loose powder, dry shampoo or solid toothpaste.

Recommended usage level: 1 - 100%

Bearberry Leaf Cellular Extract

(INCI: Arctostaphylos uva ursi Leaf Extract)

Delivering “true to nature” hydrophilic plant profiles. Cellular Extraction harnesses the species’ water-soluble blueprint of phyto-compounds and their derivatives (the entourage), in their synergistic relationships, as they exist in the cell. Extracted rapidly under high pressure, NATIVE EXTRACTS maintain the molecules’ natural integrity.

Committed to conscious manufacturing, Cellular Extracts are created using purified, deionised, rain-harvested water and less plant material than past processes to produce a natural True to Nature plant extract, that is water-wise, repurposes waste, traceable to source, transparent in composition.

The NE Bearberry Cellular Extract delivers the natural molecules this botanical species can offer in a water-soluble format, including arbutin, kaempferol, quercetin, gallic acid (GA), catechin and flavonoid glycosides.

Ideal for haircare, blemished skin, brightening, hair loss and premature ageing applications. Available as a concentrate and as a 10% dilution.

Recommended usage level: 0.5 – 1% concentrate; 1 – 5% dilution

BIOACTIVE TOTAROL™ Powder

(INCI: Totarol Powder)

A world first organic super ingredient sustainably sourced from the fallen New Zealand Totara Tree. Bioactive Totarol™ is a highly potent antioxidant (7 times more potent than vitamin E) and antibacterial (including acne causing bacteria), transforming human health by harnessing 100 million years of nature. In the 1990’s international and New Zealand scientists conducted research on the To-tara tree.

They were intrigued by the fact that To-tara wood seemed to survive environmental attacks and degradation. The wood had proved to be virtually unblemished after hundreds of years of growth. After testing it, they discovered that Bioactive Totarol™ located in the heartwood of the tree was the magic ingredient at play.

Bioactive Totarol™ is able to penetrate harmful, pathogenic bacteria and destroy them. It also fights free radicals which are unstable molecules that can damage cells, contributing to many health concerns.

Successfully used in cosmetic formulations for the last 20 years, this highly effective, multi-tasking and versatile ingredient can be used across cosmetics, skin care, oral and pet care products. Offering a microbiome friendly solution for acne, anti-ageing and inflammation.

Recommended usage level: 0.2%

BIOACTIVE TOTAROL™ T9 Cosmetic

(INCI: Totarol Powder, Helianthus annuus seed oil, Polysorbate 60, Caprylhydroxamic Acid, Glyceryl Caprylate, Glycerin)

A world first organic super ingredient sustainably sourced from the fallen New Zealand Totara Tree. Bioactive Totarol™ is a highly potent antioxidant (7 times more potent than vitamin E) and antibacterial (including acne causing bacteria), transforming human health by harnessing 100 million years of nature. In the 1990's international and New Zealand scientists conducted research on the To-tara tree.

They were intrigued by the fact that To-tara wood seemed to survive environmental attacks and degradation. The wood had proved to be virtually unblemished after hundreds of years of growth. After testing it, they discovered that Bioactive Totarol™ located in the heartwood of the tree was the magic ingredient at play.

Bioactive Totarol™ is able to penetrate harmful, pathogenic bacteria and destroy them. It also fights free radicals which are unstable molecules that can damage cells, contributing to many health concerns.

Successfully used in cosmetic formulations for the last 20 years, this highly effective, multi-tasking and versatile ingredient can be used across cosmetics, skin care, oral and pet care products. Offering a microbiome friendly solution for acne, anti-ageing and inflammation.

Recommended usage level: 0.8-1%

BIRCH OIL

(INCI: Helianthus Annuus (Sunflower) Seed Oil, Betula Alba Leaf Extract, Tocopherol)

BIRCH OIL is an anti-cellulite. Firming. Anti-inflammatory. Sensitive and/ or irritated skin. Anti-seborrhea. Hair care. Antimicrobial. Purifying. Antiseptic.

Recommended usage level: 0.5-5%

CARESOFTM

(INCI: Propanediol, Glycerin, Aqua, Curculigo Orchioides Root Extract)

CARESOFTM is a new approach to improve the sensitive skin's overall condition from the roots of "Curculigo orchioides Gaetrn".

Through the regulation of the NHE1 protein, CARESOFTM acts on the internal control mechanism of skin pH, repairing the barrier function and causing a decrease in skin reactivity and sensitivity.

It provides various co-factors and ways of modulating the activity of NHE1 and is the ideal active ingredient for the improvement of sensitive skin.

The recommended uses for this product are genital hygiene products, makeup products for sensitive skin, male and female sensitive skin, product lines for babies and hair care for sensitive scalps.

Recommended usage level: 3 - 5%

COFFEE - ECO

(INCI: Glycerin, Aqua, Propanediol, Coffea Arabica (Coffee) Seed Extract, Sodium Benzoate, Potassium Sorbate)

This well-known product has methylxanthines, with caffeine among them, and other compounds which act on the adipose tissue and circulation, facilitating the slimming and diminishing effects on the fatty tissue. It is appropriate for slimming, body weight diminishing and/ or cellulite processes and also as an antioxidant agent. Stimulates hair growth, increases hair density and reduces hair loss.

Recommended usage level: 0.5 – 5%

CERAFLUID

(INCI: Olive Glycerides, Ceramide NP)

CeraFluid is an exceptionally easy to formulate liquid Ceramide which shows the highest compatibility with skin components thanks to its natural Olive di- and triglycerides base.

It provides long-term hydration as well as improving adhesion amongst Corneocytes, thus regulating skin barrier for water retention and protecting it from external aggression.

It also improves skin elasticity and smoothness and helps to restore the barrier effect leading to protection and prevention of dehydration.

Recommended usage level: 0.5 - 2.5

CYTOFRUIT[®] WATERS Green Mandarin

(INCI: Citrus Nobilis Fruit Extract)

CYTOFRUIT[®] WATERS Green Mandarin is a Cosmos certifiable and circular economy fruit water from the production of Green Mandarin juice.

The fruits are harvested in the Mediterranean and show precious antiseptic characteristics as well as an anti-stress, making it ideal for use in relaxing, anti-stress, uplifting, refreshing, anti-depressant, soothing and lenitive applications.

Thanks to the presence of oligo-elements, this CYTOFRUIT[®] Water could sustain skin biological benefits through an improvement of cell vitality, a protection against external agents or a physiological improvement.

Recommended usage level: 1 - 100%

CYTOFRUIT® WATERS Kiwi

(INCI: Actinidia Chinensis Fruit Extract)

CYTOFRUIT® WATERS Kiwi is a Cosmos certifiable and circular economy fruit water from the production of Kiwi juice.

The fruits are harvested in the Mediterranean and are suitable for all skin types due to Kiwi's versatile protective properties. Suitable for energising skin and stimulating the skin's defence system.

Thanks to the presence of oligo-elements, this CYTOFRUIT® Water could sustain skin biological benefits through an improvement of cell vitality, a protection against external agents or a physiological improvement.

Recommended usage level: 1 - 100%

DERMASOOTH™

(INCI: Propanediol, Aqua, Enteromorpha Compressa Extract, Silybum Marianum Fruit Extract, Ocimum Sanctum Leaf Extract, Citric Acid)

DERMASOOTH™ is a truly soothing solution for sensitive skin.

It inhibits the synthesis of prostaglandins and pro-inflammatory mediators IL-6/ IL-8 while increasing collagen synthesis in the extracellular matrix for hydrated, soothed skin after mechanical and chemical external aggressions.

This product has excellent anti-redness benefits, and is recommended for aftershave and after waxing treatment, sun care, and for post aesthetic minor procedures.

Recommended usage level: 0.5 – 1.5%

CYTOFRUIT® WATERS Sweet Orange

(INCI: Citrus Aurantium Dulcis Fruit Extract)

CYTOFRUIT® WATERS Sweet Orange is a Cosmos certifiable and circular economy fruit water from the production of Sweet Orange juice. The fruits are harvested in the Mediterranean and are rich in Vitamin C.

Sweet Orange fruits gently awaken the skin with a cocktail of vitamins, whilst providing a re-energising fresh, fruity zest for a reborn skin.

Thanks to the presence of oligoelements, this CYTOFRUIT® Water could sustain skin biological benefits through an improvement of cell vitality, a protection against external agents or a physiological improvement.

Recommended usage level: 1 - 100%

DETOSKIN™

(INCI: Propanediol, Aqua, Paeonia Lactiflora Root Extract, Trehalose, Citric Acid)

DETOSKIN™ renews skin mitochondria, activating mitophagy so that cells recover all their energy, which becomes visually evident in fewer signs of ageing such as wrinkles, roughness and uneven tone.

Detoxifies and rejuvenates the skin removing damaged mitochondria by mitophagy. Boosts "clean energy" via a sustainable cellular mechanism. Decreases the anisotropy and skin tone is more homogeneous, to regain a youthful glow. Only wrinkles of smiles will remain. Blue light protection.

Recommended usage level: 1-2%

DETOSKIN™ ZNSN

(INCI: Propanediol, Aqua, Paeonia Lactiflora Root Extract, Trehalose, Citric Acid)

Detoxifies, rejuvenates and protects the skin from blue light using peony, the queen of flowers. Activates mitophagy, improves mitochondrial function and stress resistance by energizing the cells.

Recommended usage level: 1 - 2%

ENERGEN™

(INCI: Glycerin, Aqua, Sapindus Mukorossi Fruit Extract, Caesalpinia Spinosa Gum, Potassium Sorbate, Sodium Benzoate)

Triple action: hydrating, revitalising and energising with long-lasting results thanks to the exclusive 3D Matrix technology with sequential active ingredient release.

Increases cell energy (ATP) produced in the mitochondria, reactivating cell metabolism.

ENERGEN™ provides a source of energy for men's skin by increasing cellular ATP. Ideal for formulations looking to tone, rejuvenate, moisturise and revitalise the skin.

Recommended usage level: 2 – 5%

Evicare® cool

(INCI: Menthyl Lactate)

Evicare® cool acts as an active ingredients and can be used in cooling gels, sport creams, after sun care, shaving products and many more.

Due to its mint-like odour it is also used in flavour (oral care) and fragrance applications.

Evicare® cool is an ester of Menthol and Lactic Acid sourced from natural origin

Recommended usage level: 0.1-2%

Ener-GY plus

(INCI: Citrus Limon Fruit Extract, Glyceryl Glucoside, Glycerin, Potassium Sorbate)

Ener-GY plus is your microbiota-friendly smiling skin energiser. Developed by enzymatic technology this glyceryl glucoside is in an upcycled and sustainable Mediterranean solvent matrix rich in fruit oligo-elements.

Ener-GY plus supports cell vitality by boosting mitochondrial biochemical pathways, increasing ATP production and boosting cell energy for an anti-fatigue effect.

Recommended usage level: 1%

ENERGEN™ GNNX

(INCI: Aqua, Glycerin, Sapindus Mukorossi Fruit Extract, Caesalpinia Spinosa Gum, Pentylene Glycol, Levulinic Acid, Glyceryl Caprylate)

ENERGEN™ GNNX is a source of energy for men's skin.

It increases cellular ATP produced in the mitochondria, reactivating cell metabolism. It's tonifying, reduces relief imperfections, moisturises and revitalises with long-lasting results thanks to the exclusive 3D Matrix technology with sequential active ingredient release for prolonged delivery.

Recommended usage level: 2 - 5%

Evicare® heat

(INCI: Vanillyl Butyl Ether)

Evicare® heat induces a pleasant warming sensation upon application to the skin, and is often used in warming O/W creams designed for treatment of the back or the feet as well as gels and creams to warm muscles before or after sports.

Recommended usage level: 0.1 - 0.5%

Evicare® heat eco

(INCI: Vanillyl Butyl Ether)

Evicare® heat eco is able to interact with the TRPV1 receptors on human skin to induce a gentle but long-lasting warming sensation. The onset is typically within 5-10 minutes, while the warming effect can last for several hours.

It is often used in warming O/W creams designed for treatment of the back or the feet as well as gels and creams to warm muscles before or after sports. However, other areas of application have been explored as well, such as lip products with plumping effect, personal lubricants, scalp treatments and pain relief products such as patches.

In all cases the mode of action is based on the increase of microcirculation, meaning that blood flow is increased in the treated area.

Recommended usage level: 0.1-0.5%

Evicare® wintergreen

(INCI: Salicylic Acid)

Evicare® wintergreen is a natural antimicrobial active and preservative. Salicylic acid is well known in the industry and used as a preservative but even more as an active with specific function as anti-dandruff agent, anti-acne active and for its keratinolytic affect.

Evicare® wintergreen is 100% natural and sourced sustainably from the wintergreen shrub as a by-product from aroma sourcing. It is moderately water soluble and can simply be added to the water phase. It is often used in anti-acne and anti-dandruff products as a main active.

Recommended usage level: 0.5 - 2.5%

EXO FDS Azelaic Fusion

(INCI: Aqua, Propanediol, Glycerin, Phosphatidylcholine, Mannitol, Azelaic Acid, Potassium Sorbate, Ethylhexylglycerin, Beta-Sitosterol, Sorbitan Oleate, Chamomilla Recutita Extract, Salvia Officinalis Leaf Extract, Tropaeolum Majus Extract, Arctium Lappa Root Extract, Cetrimonium Chloride, Phytosphingosine)

Exosomes are natural lipid vesicles that facilitate cell communication and modulate physiological processes, mimicking intercellular communication. Biomimetic Exosomes combine ancient plant extracts rich in biocompounds with cutting-edge delivery technology. Follicular Delivery bioexosomes transport active ingredients into the hair follicle.

Plant extracts, along with azelaic acid, offer a comprehensive solution for acne-prone skin. Azelaic acid regulates cell turnover, reducing acne formation and inflammation. Chamomile soothes irritation, sage calms swelling, and nasturtium stimulates collagen production for skin repair. Burdock detoxifies, aiding acne clearance.

Together, these ingredients create a holistic approach to clearer, healthier skin. The delivery system protects the extracts from degradation caused by pH or interaction whilst delivering the active ingredient to the interior of the hair follicle, optimising its access to the sebaceous gland.

EXO FDS Azelaic Fusion regulates cell turnover reducing acne and inflammation, soothes irritation and redness, provides anti-inflammatory properties to calm swelling associated with acne breakouts, stimulates collagen production for skin repair, acts as a detoxifying agent, and protects the skin against free radicals and environmental damage.

Recommended usage level: 1-10%

EXO FDS FolliXield

(INCI: Aqua, Glycerin, Phosphatidylcholine, Mannitol, Methylpropanediol, Trifolium Pratense Extract, Caprylyl Glycol, Ethylhexylglycerin, Sorbitan Oleate, Betasitosterol, Acetyl Tetrapeptide-3, Phenylpropanol, Potassium Sorbate, Cetrimonium Chloride, Phytosphingosine)

Exosomes are natural lipid vesicles that facilitate cell communication and modulate physiological processes, mimicking intercellular communication. Biomimetic Exosomes combine ancient plant extracts rich in biocompounds with cutting-edge delivery technology. Follicular Delivery bioexosomes transport active ingredients into the hair follicle.

Acetyl tetrapeptide-3 and red clover extract are known for their synergistic effects in preventing hair loss. Acetyl tetrapeptide-3 strengthens hair roots by boosting collagen production, enhancing elasticity, and resistance to breakage. Red clover extract stimulates scalp circulation and hair cell production, promoting thicker growth.

Their combined anti-inflammatory and antioxidant properties soothe the scalp and enhance hair growth.

The delivery system protects against degradation caused by pH or interaction whilst delivering the active ingredient to the interior of the hair follicle, optimising its access to the sebaceous gland. Strengthens follicles, enhances matrix proteins, reduces hair shedding, promotes hair anchorage, prevents hair loss and provides stronger, more resilient hair whilst also providing protection against environmental stressors.

Recommended usage level: 1-10%

Finger Lime Caviar Cellular Extract

(INCI: Citrus Australasica Fruit Extract)

Delivering “true to nature” hydrophilic plant profiles. Cellular Extraction harnesses the species’ water-soluble blueprint of phyto-compounds and their derivatives (the entourage), in their synergistic relationships, as they exist in the cell. Extracted rapidly under high pressure, NATIVE EXTRACTS maintain the molecules’ natural integrity.

Committed to conscious manufacturing, Cellular Extracts are created using purified, deionised, rain-harvested water and less plant material than past processes to produce a natural True to Nature plant extract, that is water-wise, repurposes waste, traceable to source, transparent in composition.

The NE Finger Lime Caviar Cellular Extract delivers the natural molecules this botanical species can offer in a water-soluble format, including limocitrin, tryptophan, flavone-C-glycoside, flavonoid glycosides, organic acids, amino acids and phenolics, to power your products naturally. These exotic “finger shaped” fruits are bursting with tiny pearls or caviar, loaded with exciting water-soluble phyto-compounds making it an ideal choice for barrier function, hydration, reactive skin conditions, blemished skin and wound healing.

Available as a concentrate or as a 10% dilution.

Recommended usage level: 0.5 – 1% concentrate; 1 – 5% dilution

GINSENG EXTRACT GNB

(INCI: Aqua, Glycerin, Panax Ginseng Root Extract, Potassium Sorbate, Sodium Benzoate)

GINSENG EXTRACT GNB is a water-soluble extract. Ideal for anti-ageing, anti-wrinkles and firming. It increases collagen synthesis, acts as an antioxidant and stimulates hair growth.

Recommended usage level: 0.5 – 5%

GINKGO - ECO

(INCI: Glycerin, Aqua, Ginkgo Biloba Leaf Extract, Potassium Sorbate, Sodium Benzoate)

GINKGO – ECO is a standardised extract in Glycerin/ water from the leaves of "Ginkgo biloba L.", proceeding from organic crop. It contains min.100 ppm of Total Flavonoids. Ideal for anti-ageing and free radical scavenging. It reduces inflammatory processes, increases lipolysis, and stimulates blood circulation. It is an anti-cellulite that is energising and stimulates fibroblast metabolism. GINKGO – ECO is recommended for the protection of skin and hair integrity against oxidative agents and cosmetic products which stimulate blood circulation and have anti-irritation activity.

Recommended usage level: 0.1-3%

GINSENG OIL

(INCI: Helianthus Annuus (Sunflower) Seed Oil, Panax Ginseng Root Extract, Tocopherol)

GINSENG OIL is an antioxidant offering anti-ageing, photoprotection, antiseptic and purifying properties.

Recommended usage level: 0.5-5%

GOJI - ECO

(INCI: Propanediol, Aqua, Lycium Barbarum Fruit Extract, Sodium Benzoate, Potassium Sorbate)

GOJI - ECO is COSMOS certified, this exotic product gives energy and vitality to the skin due to the high variety of compounds which offers. It helps to maintain a healthy and good looking skin. It is dermo-stimulant and antioxidant.

Recommended usage level: 0.5 – 5%

GRAPE EXTRACT GNB

(INCI: Glycerin, Aqua, Vitis Vinifera (Grape) Fruit Extract, Sodium Benzoate, Potassium Sorbate)

GRAPE EXTRACT GNB is a water-soluble extract. Antioxidant. Anti-aging. Hair colour protection. Photoprotection. Anti-inflammatory. Anti-irritant. Soothing. Vasoprotective. Anti-edema. Hair growth stimulator. Against hair loss.

Recommended usage level: 0.5-5%

HIBISCUS - ECO

(INCI: Glycerin, Aqua, Hibiscus Sabdariffa Flower Extract, Potassium Sorbate, Sodium Benzoate)

HIBISCUS – ECO is a standardised extract in a medium of Glycerin/ water from the flowers of "Hibiscus sabdariffa L.", proceeding from organic crop. It contains a minimum 1.5% of Anthocyanosides.

HIBISCUS – ECO largely inhibits elastin degradation, which results in beneficial effects on skin such as the maintenance of elasticity and its consequent anti-ageing effects, and a clear recovery of inflammatory processes involving this enzyme.

It can be used in skin care vitalising and rejuvenating treatments, special products to maintain skin tone and elasticity, anti-acne preparations and after-shave products. It can also be used in re-firming and anti-cellulite products and hair conditioners and colour enhancing products.

Recommended usage level: 0.1-4%

GRAPE (SEED) EXTRACT H.GL. - M.S

(INCI: Glycerin, Aqua, Vitis Vinifera (Grape) Seed Extract, Potassium Sorbate, Sodium Benzoate)

GRAPE SEED EXTRACT H.GL.-M.S. is a water-soluble extract with anti-ageing, antioxidant, photoprotection, anti-inflammatory properties. In hair it offers colour protection and works against hair loss. Vasoprotective and blood circulation stimulation. Anti-acne, purifying and antiseptic.

Recommended usage level: 0.5 – 5%

GUARANA EXTRACT GDB

(INCI: Aqua, Glycerin, Paullinia Cupana Fruit Extract, Sodium Benzoate, Potassium Sorbate)

GUARANA EXTRACT GDB is a water-soluble extract that acts on the adipose tissue.

Stimulates blood circulation, provides an anti-cellulite effect as well as regulating sebum. Wounds healing and astringent properties.

Recommended usage level: 0.5 – 5%

Kahai Oil

(INCI: Caryodendron orinocense nut oil)

100% natural anti-ageing oil, extracted by cold pressing the nuts of the Cacay tree. It has a high penetration capability, a dry skin feel and a mild nutty scent, which fades quickly.

Its high content of natural Vitamin E, F and Retinol nourishes, softens and repairs damaged skin making it an ideal choice for scar treatments, tattoo care, stretch marks and aftershave creams.

Kahai Oil revitalises the skins radiance, reduces fine lines and wrinkles, minimises dark spots and provides long lasting hydration. Kahai Oil contains 50% more Vitamin E and twice the amount of Linoleic Acid than Argan oil and it has 3 times more Retinol than Rose Hip Oil. When used on nails it strengthens brittle nails and relieves nail psoriasis. On hair it provides thermal protection, repairs split ends, increases gloss and reduces frizz at high humidity, out performing Argan oil (tested at 5%).

Recommended usage level: Various

Kakadu Plum Cellular Extract

(INCI: Terminalia Ferdinandiana Fruit Extract)

Delivering “true to nature” hydrophilic plant profiles. Cellular Extraction harnesses the species’ water-soluble blueprint of phyto-compounds and their derivatives (the entourage), in their synergistic relationships, as they exist in the cell. Extracted rapidly under high pressure, NATIVE EXTRACTS maintain the molecules’ natural integrity.

Committed to conscious manufacturing, Cellular Extracts are created using purified, deionised, rain-harvested water and less plant material than past processes to produce a natural True to Nature plant extract, that is water-wise, repurposes waste, traceable to source, transparent in composition. The NE Kakadu Plum Cellular Extract delivers stable, natural, active and biological/recycling vitamin C in a water-soluble format.

This botanical species, is the highest source of vitamin C, offering other natural molecules in a water-soluble format that contains natural antioxidant capacity. Kakadu Plum also known as Gubinge, Billygoat Plum or Murunga, is a native tree from Australia, the fruit is wild harvested by Indigenous communities exclusively in the Kimberleys, Northern Territory and Arnhem Land. Indigenous Australians have used this fruit extensively for food, its healing properties and traditional medicine.

Ideal for anti-ageing, wellness and haircare. Available as a concentrate or as a 10% dilution.

Recommended usage level: 0.5 – 1% concentrate; 1 – 5% dilution

KERANUTRI™

(INCI: Aqua, Glycerin, Ceratonia Siliqua (Carob) Seed Extract, Hydrolyzed Soy Protein, Zea Mays (Corn) Starch, Polyquaternium-16, Sodium Benzoate, Potassium Sorbate, Polyquaternium-7, Guar Hydroxypropyltrimonium Chloride)

Hair strengthener for healthy and damaged hair with sequential active ingredient release thanks to exclusive 3D Matrix technology. The cation matrix creates a protective film on the hair, while sequentially releasing amino acids and peptides to strengthen and repair the hair fiber. Ideal for daily use, strengthening and intensive repairing products, after chemical and/ or thermal treatment as well as styling and fixing hair products.

Recommended usage level: 1.5 – 2.5%

KERASCALP™

(INCI: Propanediol, Glycerin, Phyllanthus Emblica Fruit Extract)

A healthy scalp for a healthy hair. Hair loss and hair greying are two of consumers main concerns.

KERASCALP™ stimulates and energises the scalp for healthier, stronger hair. Reduces and prevents the appearance of the first grey hairs. Increases hair shine and improves the overall healthy appearance of hair.

With 100% natural origin Amla, a traditional rasayana (anti-ageing) and adaptogen fruit, used in ayurvedic medicine and highly revered in India.

Recommended usage level: 1-2%

LINSEED OIL

(INCI: Linum Usitatissimum (Linseed) Seed Oil)

LINSEED OIL provides moisturising, emollient and conditioning. Anti-hair loss.

Recommended usage level: 0.5-5%

LEGACTIF™ QNNN

(INCI: Aqua, Glycerin, Propanediol, Ruscus Aculeatus Root Extract, Citrus Limon (Lemon) Peel Extract, Solidago Virgaurea (Goldenrod) Extract, Pentylene)

LEGACTIF™ QNNN improves circulation and reduces swelling in the legs and around the eyes.

It reduces the permeability and fragility of blood vessels and the quantity of melanin around the eyes thanks to the high flavonoid content.

Ideal for products targeting tired legs, anti-edema, decongestion, fatigue, microcirculation, eye bags, dark circles and wrinkles.

Recommended usage level: 0.5 – 1.5%

Mountain Pepper Leaf Cellular Extract

(INCI: Tasmanian lanceolata Leaf Extract)

Delivering “true to nature” hydrophilic plant profiles. Cellular Extraction harnesses the species’ water-soluble blueprint of phyto-compounds and their derivatives (the entourage), in their synergistic relationships, as they exist in the cell. Extracted rapidly under high pressure, NATIVE EXTRACTS maintain the molecules’ natural integrity.

Committed to conscious manufacturing, Cellular Extracts are created using purified, deionised, rain-harvested water and less plant material than past processes to produce a natural True to Nature plant extract, that is water-wise, repurposes waste, traceable to source, transparent in composition.

Specially designed for sensitive skin to protect and reduce skin sensibility. Perfect for post-shave and sunburn brief's.

Recommended usage level: 0.5 – 1% concentrate; 1 – 5% dilution

Native Orange Pearl Cellular Extract

(INCI: Malcura Cochinchinensis Leaf Extract)

Delivering “true to nature” hydrophilic plant profiles. Cellular Extraction harnesses the species’ water-soluble blueprint of phyto-compounds and their derivatives (the entourage), in their synergistic relationships, as they exist in the cell. Extracted rapidly under high pressure, NATIVE EXTRACTS maintain the molecules’ natural integrity.

Committed to conscious manufacturing, Cellular Extracts are created using purified, deionised, rain-harvested water and less plant material than past processes to produce a natural True to Nature plant extract, that is water-wise, repurposes waste, traceable to source, transparent in composition.

An age prevention hero, anti-wrinkle & collagen booster, skin repairing and firming - perfect for skin barrier briefs.

Recommended usage level: 0.5 – 1% concentrate; 1 – 5% dilution.

Native River Mint Cellular Extract

(INCI: Mentha australis Leaf Extract)

Delivering “true to nature” hydrophilic plant profiles. Cellular Extraction harnesses the species’ water-soluble blueprint of phyto-compounds and their derivatives (the entourage), in their synergistic relationships, as they exist in the cell. Extracted rapidly under high pressure, NATIVE EXTRACTS maintain the molecules’ natural integrity.

Committed to conscious manufacturing, Cellular Extracts are created using purified, deionised, rain-harvested water and less plant material than past processes to produce a natural True to Nature plant extract, that is water-wise, repurposes waste, traceable to source, transparent in composition.

The NE Native River Mint Cellular Extract delivers all the natural molecules this botanical species can offer in a water-soluble format, including amino and organic acids, phenolics, flavonoid glycosides, rosmarinic acid, terpenoids and methoxy flavonoids to power your products naturally. While native to all states, NATIVE EXTRACTS source their Native River Mint from the South Australia Riverlands region grown by their Indigenous Grower, Dominic Smith (Pundi Produce) using a water efficient aquaponics process.

There is a unique synergy between the phyto compounds in the NE Native River Mint Cellular Extract that make this Australian Botanical a unique plant profile, with a standout phyto-compound, rosmarinic acid, which is well-known for its anti-inflammatory, UV protection, anti-wrinkle, anti-scarring and anti-microbial properties.

Recommended usage level: 0.5 – 1% concentrate; 1 – 5% dilution

NELUPURE™

(INCI: Propanediol, Glycerin, Nymphaea Caerulea Flower Extract, Nelumbo Nucifera Flower Extract)

NELUPURE™ contains a blended extract from two types of lotus flower, the Egyptian Lotus (Nymphaea caerulea) and the Sacred Lotus (Nelumbo nucifera), whose synergic action transmits purity and luminosity.

NELUPURE™ reduces excess oils and prevents the appearance of blemishes, whilst inhibiting expression of the leptin receptor to reduce sebaceous hypersecretion.

It is the active for getting oily skin under control by reducing the activity of key factors in excess sebum production that cause inflammation of the pores, leaving a smooth, radiant and pure complexion.

Just one application is enough to see results after only 8 hours.

Recommended usage level: 2%

OPAL ALGA™

(INCI: Glycerin, Aqua, Cystoseira Tamariscifolia Extract)

OPAL ALGA™ is a light-responsive technology to awaken the skin.

Based on a sophisticated strategy by the Cystoseira Tamariscifolia alga, which has the ability to activate and deactivate opal-like photonic crystals and adapt to the light rhythmicity induced by the tidal cycles in Brittany.

Powerful active substances: phlorotannins (phloroglucinol) and specialised sugars (mannitol) make it unique. It acts by resetting the skin's circadian rhythm and improving skin cells communication whilst preventing inflammatory microenvironment of skin.

This 100% natural origin, water soluble, organic and French sourced active erases vascular dark circles, boosts firmness, revives tired skin, deeply hydrates and plumps the skin.

Recommended usage level: 1-3%

OAT MILK M.S

(INCI: Aqua, Glycerin, Avena Sativa (Oat) Kernel Extract, PEG-60 Hydrogenated Castor Oil, Helianthus Annuus (Sunflower) Seed Oil, Tocopherol, Potassium Sorbate, Sodium Benzoate)

OAT MILK M.S is an extract of Avena sativa seeds, which contains oat lipids, proteins and carbohydrates as an emulsion. It also contains minerals and vitamins.

Oat β -glucan is structurally similar to hyaluronic acid, which is extensively used to produce high-viscosity preparations and as a skin moisturising and smoothing agent. Skin and hair conditioning, hair and skin repair and as an antifungal are the suggested applications for Oat Extract.

External applications of oat seeds have a helpful emollient effect in cases of skin irritation, seborrhea and different types of pruritus. Oat mucilage is used in creams to treat sun-induced erythema. Oat flour has long been used in cosmetics as an ingredient of face masks and as an additive of soaps to relieve irritation and itching.

Recommended usage level: 0.5 – 5%

PHYTOSERENE

(INCI: Phytosterols)

PhytoSerene is a pure beta-sitosterol; a natural micro-nutrient plant lipid found in the cells and membranes of the Pine tree. Chemically, the material is very similar to cholesterol.

This plant sterol is different in its biological function and because humans do not synthesise sterols in the body, it is necessary to replace daily losses.

Phytoserene demonstrates the capacity to reduce skin redness after exposure to a chemical agent and to diminish TEWL by forming a protective barrier on the skin.

Recommended usage level: 0.5 - 2.5

Pixalia®

(INCI: Propanediol, Water, Cleome gynandra Leaf Extract)

Cleome gynandra is a plant known for its high level of polyphenols and particularly flavonoids, which are molecules with significant antioxidant and anti-inflammatory properties.

Pixalia® is an extract rich in polyphenols, obtained exclusively from the dried leaves of Cleome gynandra, using an extraction process that protects both people and the environment, patented by Laboratoires Expanscience. This eco-designed active ingredient is responsibly sourced from Burkina Faso.

Pixalia® rebalances skin microbiota, regulates C.acnes phylotypes, and rebalances sebum balance in quantity and quality by acting on oxidative squalene. In hair it supports a balanced scalp microbiome by targeting Malassezia restricta, one of the main yeasts responsible for dandruff, for a purified scalp. It also inhibits key markers involved in inflammatory response to P. acnes to reduce inflammation.

Recommended usage level: 1 – 3%

Plerasan® Re-balance

(INCI: Aqua, Beta-glucan)

A natural polysaccharide found in the cell wall of the oyster mushroom. This biologically active beta-glucan balances the skin defence system of sensitive skin whilst stimulating the skin repair process. It improves skin moisturisation whilst protecting the skin and boosting active ingredients.

Confirmed clinical effect in patients with mild to moderate eczema. Ideal for post-laser/peeling treatments, after shave, wound healing, after sun, baby care.

Recommended usage level: 2.0%

POLYPLANT MARINE H.GL. - M.S

(INCI: Infinity Ingredients is the UK distributor of POLYPLANT MARINE H.GL. - M.S from Provital)

POLYPLANT MARINE H.GL. - M.S is a plant extract complex that contains some of the following algae: Fucus, Nori, Enteromorpha, Wakame and Lithothamnium. Fucus is included in anti-cellulite gels and mesotherapy creams and used to heal wounds.

Nori contains polysaccharides, pigments, vitamins and minerals. Carbohydrates are the most abundant Enteromorpha components (48%), followed by proteins (10-18%) and lipids (0.5-1.7%).

Wakame extract is used in cosmetics because of its polysaccharide, protein, vitamin and mineral content. POLYPLANT MARINE H.GL. - M.S is highly recommended to formulate cosmetic products with moisturising, emollient and calming properties. It also has energising activities.

Incorporation of algae to the world of cosmetics helps restore the natural skin balance, due to their ion-based elements (chelate forms of oligoelements, vitamins and minerals).

POLYPLANT MARINE H.GL. - M.S is of great use to formulate cosmetic products with skin tonifying, revitalising and stimulating activities.

Recommended usage level: Recommended usage level: 0.5 - 5%

POMEGRANATE EXTRACT H.GL. - M.S

(INCI: Glycerin, Aqua, Punica Granatum Fruit Extract, Sodium Benzoate, Potassium Sorbate)

POMEGRANATE EXTRACT H.GL. - M.S is a water-soluble extract with astringent and sebum regulating properties. It soothes and provides an anti-inflammatory effect. Ideal for sensitive skin, anti-dandruff, antioxidant, photoprotection, anti-ageing, hair colour protection products.

Recommended usage level: 0.5-5%

POLYPLANT MARINE SEAWEEDS GNFN

(INCI: Glycerin, Aqua, Fucus Vesiculosus Extract, Laminaria Digitata Extract, Spirulina Maxima Extract, Porphyra Umbilicalis Extract, Ascophyllum Nodosum Extract, Gluconolactone, Calcium Gluconate, Sodium Benzoate, Potassium Sorbate)

POLYPLANT MARINE SEAWEEDS GNFN is a water-soluble extract providing energising, tonifying, revitalising, moisturising, soothing, film forming and stimulant Properties.

Recommended usage level: 2 – 5%

PrincipHYAL® Aurora

(INCI: Sodium Hyaluronate)

PrincipHYAL® Aurora is a specific biotechnological fraction that targets skin regeneration. A very small molecular weight Sodium Hyaluronate, it is designed to obtain the perfect balance between skin penetration and skin activation.

AURORA optimises the regeneration cycle of the skin through an increased proliferation of cells and stimulation of the skin reparative and healing processes, resulting in an improvement in the global epidermis health and skin cohesion through a better integrity of the Epidermis layers.

Recommended usage level: 0.2 - 1.0

PrincipHYAL[®] Cube3

(INCI: Sodium Hyaluronate)

PrincipHYAL[®] Cube3 is a full-spectrum biotechnological fraction of Sodium Hyaluronate that targets short-term anti-ageing effects. A unique 3-in-1 ingredient which quickly improves the global epidermis health thanks to a strengthening of the barrier function of the skin.

Skin shows an immediate lifting effect when evaluated by elasticity, smoothness, number and depth of wrinkles, synthesis of neoelastin, and a general improvement of the skin aspect.

CUBE3 also enhances skin penetration of other lipophilic and hydrophilic active ingredients to optimise their activity

Recommended usage level: 0.5 - 1.0

PrincipHYAL[®] Signal-10

(INCI: Hyaluronic Acid)

PrincipHYAL[®] Signal-10 is a fast-track moisturiser derived from a stable extremely low molecular weight (standardised at less than 10 kDa) oligomer of Hyaluronic Acid.

SIGNAL-10 acts very quickly as it permeates more efficiently than classic forms of Hyaluronans. This stimulates the proliferation and regeneration of Fibroblasts, and gives a fast improvement in skin of moisturisation and elasticity.

Ideal for developing products where speed is everything and TURBO cosmetics is the concept.

Recommended usage level: 0.1 - 0.5

PrincipHYAL[®] Difference

(INCI: Sodium Hyaluronate)

PrincipHYAL[®] Difference is a full-spectrum biotechnological fraction of Sodium Hyaluronate that targets long-term anti-ageing effects. DIFFERENCE is a specific fraction that targets skin wrinkles, by increasing skin elasticity.

This anti-wrinkle activity (clinically evaluated in-vivo on smoothness, roughness, wrinkleness, scaliness, and wrinkle number) results in an overall visible improvement in global Epidermal health.

Recommended usage level: 0.5 - 1.0

PRONALEN FIBRO-ACTIF BCCS

(INCI: Butylene Glycol, Aqua, Glycine Soja (Soybean) Germ Extract, Triticum Vulgare (Wheat) Germ Extract, Phenoxyethanol, Potassium Sorbate)

PRONALEN FIBRO-ACTIF BCCS is a standardised hydrosoluble extract of Germs of Soy and Wheat.

Stimulates hair growth and increases oxidative cell metabolism thanks to bioactive biopeptides and oligosaccharides.

Improves styling control for rejuvenated and healthy hair.

Recommended usage level: 1 - 2%

PRONALEN SPORT RE-ENERGIZER

(INCI: Aqua, Glycerin, Enteromorpha Compressa Extract, Sodium Benzoate, Potassium Sorbate)

PRONALEN SPORT RE-ENERGIZER is a marine active obtained from the water-soluble fraction of the algae *Enteromorpha compressa* (L.) Nees harvested during summer, when it contains optimal carbohydrate levels, especially an important fraction of oligosaccharides.

PRONALEN SPORT RE-ENERGIZER is a cosmetic active compound, a botanical osmoregulator, designed for improving and, in some extreme cases, reinforcing the skin homeostasis in such a way that the own epidermal cell mechanisms may auto-regulate and re-balance the situation.

PRONALEN SPORT RE-ENERGIZER may be added to different cosmetic product lines designed for skin and hair, because of its main action as a skin ionic balance restorer (skin homeostasis) under daily or intense physical activity situations and because of its additional advantages as a moisturising and refreshing agent.

Recommended usage level: 1 - 5%

QUILLAJA EXTRACT H.GL. - M.S.

(INCI: Glycerin, Aqua, Quillaja Saponaria Bark Extract, Sodium Benzoate, Potassium Sorbate)

Water-soluble extract with sebo-regulating, anti-hair loss, antimicrobial, purifying and antiseptic properties.

Recommended usage level: 0.5-5.0%

PURESKIN NNSN

(INCI: PEG-30 Castor Oil, Sulfur)

PURESKIN NNSN is a biosulphur fluid. Sebum regulation for oily skin.

The topical sulphur is used to treat acne. Thanks to its antifungal and antibacterial activity, it can help to reduce excess sebum and soothe redness and inflammation, as well as helping to clean the pores and prevent the spread of pimples and blackheads.

Suitable for hair care, antifungal, purifying and antiseptic applications.

Recommended usage level: 0.5-2%

RED CLOVER EXTRACT H.GL. - M.S

(INCI: Glycerin, Aqua, Trifolium Pratense (Clover) Extract, Potassium Sorbate, Sodium Benzoate)

RED CLOVER EXTRACT H.GL. - M.S. is a water-soluble extract ideal for anti-ageing, mature skin, firming, antioxidant, photoprotection, anti-alopecia and sebo-regulating.

Recommended usage level: 0.5 – 5%

Rhassoul Clay

(INCI: Moroccan lava clay)

Rhassoul is a Moroccan lava clay, part of the Hammam rituals and is used in both skin and hair care. Unlike soap, Rhassoul cleanses without surfactant by naturally absorbing grease, sebum and impurities to purify the skin and hair.

Rhassoul Clay is ideal for formulating solid and powder cosmetic products such as, powdered face masks, cleansing pastes, powder cleansers, lotions, body wraps, scrubs, powdered shower gels, solid soap, shampoo bars, dry shampoo and hair masks.

Recommended usage level: 1-40%

ROYALAMIN

(INCI: Glycerin, Royal Jelly)

ROYALAMIN is a Glycerin suspension of Royal Jelly, is a fluid secretion produced by worker bees. Recommended to formulate cosmetic products with purifying, antiseptic, skin moisturising and smoothing effects as well as hair conditioners and emollients.

Recommended usage level: 0.5 – 5%

Rice MicroPlant 25

(INCI: Oyza sativia powder)

Rice MicroPlant 25 is a multifunctional ingredient used as a mattifying agent, texturiser, bulking agent, to provide softness and as an alternative to titanium. Thanks to its starchy composition, Rice MicroPlant 25 brings a texturising effect to the product and extreme softness to the final product.

It improves adhesion to the skin leaving a soft and silky touch. It is useful to formulate cosmetic products solid and powder such as mask, powder or solid cleanser, solid shampoo.

Recommended usage level: 1 - 100%

SAGE EXTRACT H.GL. - M.S

(INCI: Glycerin, Aqua, Salvia Officinalis (Sage) Leaf Extract, Potassium Sorbate, Sodium Benzoate)

SAGE EXTRACT H.GL. - M.S. is an extract in Glycerin/ water from the leaves of "Salvia officinalis L."

Sage Extract demonstrates antimicrobial activity, antioxidant activity, anti-secretory, anti-perspirant activity, anti-inflammatory activity, activity on hair and astringent activity. The antimicrobial activity is mainly due to the thujones in the essential oil. Externally applied thujones seem to have antihydrotic activity, since they block the nerve terminals in sweat glands.

Sage leaves also have a well-known antioxidant activity based on their phenolic compounds content.

SAGE EXTRACT H.GL. - M.S. is ideal for formulating tonics, deodorants, purifying, reactivating, anti-perspirant and anti-dandruff products up to 1% dry extract and up to 5% glycolic and fluid extracts when used in stimulating and purifying hair lotions, toothpastes, greasy and opaque skin products, deodorants and anti-perspirants. It can be used at up to 10% in bath and shower gel and shampoo.

Recommended usage level: 0.5-5%

SAW PALMETTO EXTRACT GNBN

(INCI: Glycerin, Water, Serenoa Serrulata Fruit Extract, Sodium Benzoate, Potassium Sorbate)

Saw palmetto is rich in sugar and high molecular weight polysaccharides, making it an ideal moisturiser and film former.

It's dual inhibitory effect on both arachidonic acid metabolic pathways provides anti-irritancy properties and the anti-androgenic activity makes saw palmetto extract useful in formulating cosmetic products to treat androgenic alopecia and cosmetic products for greasy skin and hair.

Recommended usage level: 0.5 – 5%

TELOCAPIL™ BNBS

(INCI: Butylene Glycol, Aqua, Dihydromyricetin , Sodium Bisulfite, Disodium EDTA, Sodium Benzoate, Potassium Sorbate)

TELOCAPIL™ BNBS is a natural retardant that delays hair growth and accelerates hair removal.

Its selective inhibition of kinase tyrosine activity in the IGF-1 receptor of cells in the hair matrix, impeded growth stimuli in the follicle's anagen phase.

Ideal for post-depilation treatments and daily use products such as body moisturising and after-shaves.

Recommended usage level: 0.5 - 1.5% in daily use products; 1.0 - 2.0% in specific treatment products

SENSFEEL™

(INCI: Propanediol, Coleus Forskohlii Root Extract, Camellia Sinensis Leaf Extract)

SENSFEEL™ is an active ingredient which acts as a synergistic enhancer of the production of male pheromone, androstadienone through the synergy of its two components, forskolin and theaflavins.

With SENSFEEL™ the amount of released pheromones will be even greater. This makes it a very suitable element for cosmetic products designed to increase the perceived attractiveness of men. It can be used in daily hygiene products, such as deodorants or bath gels, male cosmetics, such as aftershave products and body milks and lotions.

Recommended usage level: 1 – 2%

TRIKENOL™ PLUS

(INCI: Methylpropanediol, 4-Terpineol, Salicylic Acid, Salix Alba (Willow) Bark Extract)

Iconic microbiome regulator that mattifies and rebalances the microbiota to reduce imperfections.

It works by inhibiting the growth of dysbiotic microorganisms and cyclooxygenase (COX), responsible for the synthesis of inflammatory mediators.

TRIKENOL™ PLUS can be used in the formulation of cosmetic products for the treatment of acne-prone oily skin at different doses depending on the desired effect or activity.

Recommended usage level: 0.8%

Vegan CDS Glycolic

(INCI: Aqua, Mannitol, Phosphatidylcholine, Glycerin, Glycolic Acid, Decyl Glucoside, Cetyl Alcohol, Potassium Sorbate, Sodium Benzoate, Ceramide NP (Ceramide 3), Xanthan Gum, Sodium Chloride)

Glycolic acid is the most popular of the Alpha hydroxyl acids (AHAs) or fruit acids and it is characterised by its very low molecular weight which enables it to penetrate the deeper skin levels.

In low concentrations it has hydrating properties. In higher concentrations it is a powerful exfoliator which dissolves the lipids that attach to dead cells facilitating their release and thereby stimulating the cell renewal cycle. For this reason, it is indicated for anti-aging treatment and as an adjuvant treatment for dyschromias and acne.

The delivery system maintains the Glycolic acid at a low pH level until the point of delivery and enables formulation at any pH without the risk of the acid dissociating. A smaller dose of acid is required to obtain the same amount of non-dissociated acid in the stratum corneum therefore reducing irritation.

Recommended usage level: 1-10%

Vegan CDS Lactic

(INCI: Aqua, Mannitol, Phosphatidylcholine, Glycerin, Lactic Acid, Decyl Glucoside, Cetyl Alcohol, Potassium Sorbate, Sodium Benzoate, Ceramide NP (Ceramide 3), Xanthan Gum, Sodium Chloride)

Lactic acid is an Alpha hydroxyl acid (AHA) produced by the fermentation of certain foodstuffs such as milk. It is one of the most skin-sensitive AHAs which enables it be used on dry and/or moderately sensitive skins.

In low concentrations it has hydrating properties. In higher concentrations it is a powerful exfoliator which dissolves the lipids that attach to dead cells and facilitates their release, thereby stimulating the cell renewal cycle. It is indicated for the treatment of sun produced skin blemishes and for skin tone and texture improvement. It also has important skin moisturising properties.

The benefits of the encapsulation system enable the Lactic acid to be maintained at a low pH level until the point of delivery. Allows formulations at any pH level without the encapsulated acid dissociating. Selective delivery of the active ingredient in the stratum corneum to ensure a higher concentration at that level and the avoidance of skin penetration, thereby reducing irritation.

Recommended usage level: 1-10%

Vegan CDS Mandelic

(INCI: Aqua, Mannitol, Phosphatidylcholine, Glycerin, Mandelic Acid, Polyglyceryl-10 Laurate, Cetyl Alcohol, Potassium Sorbate, Sodium Benzoate, Ceramide NP (Ceramide 3), Xanthan Gum, Sodium Chloride)

AHA derived from Almonds. It has twice the molecular weight of glycolic acid and consequently is less skin penetrative and causes less irritation. It is apt for use on moderately sensitive skins and accelerates the renewal of the stratum corneum.

Encapsulation into the nanovesicles maintains the Mandelic acid at a low pH level until the point of delivery. It facilitates formulations at any pH level without the encapsulated acid dissociating. Smaller dose of acid is required to obtain the same amount of non-dissociated acid in the stratum corneum.

Selective delivery of the active ingredient in the stratum corneum to ensure a higher concentration at that level. The gradual delivery of the acid ensures a more sustainable skin renewal action.

Recommended usage level: 1-10%

Vegan DDS Oligo HA

(INCI: Aqua, Mannitol, Phosphatidylcholine, Glycerin, Hyaluronic Acid, Cetyl Alcohol, Decyl Glucoside, Potassium Sorbate, Sodium Benzoate, Xanthan Gum, Sodium Chloride)

Hyaluronic Acid is a structural polysaccharide which is naturally present in the skin and which can capture and retain large amounts of water. As the body ages, the presence of this substance is reduced considerably and by the age of 50 only 50% of the endogenous hyaluronic acid remains.

As a consequence, the skin loses its volume and firmness and suffers an increased wrinkling effect. Oligo Hyaluronic Acid is obtained via an advanced and complicated full degradation process with hyaluronidase of hyaluronic acid, achieving sizes smaller than 10Kda (20 times less than that known as the "low molecular weight hyaluronic acid").

This specific type of hyaluronic acid can be transported by the nanovesicles until its delivery to the skin levels where it replaces lost hyaluronic acid, captures water thereby recovering the skin volume, reduces wrinkle depth and restores the elasticity and tonicity more typically associated with much younger skin.

Recommended usage level: 1 - 10%

Vegan DDS Pure Retinal

(INCI: Aqua, Phosphatidylcholine, Pentyleneglycol, Mannitol, Glycerin, Polyglyceryl-10 Laurate, Retinal, Cetyl Alcohol, Tocopherol)

Retinal stimulates the production of hyaluronic acid, collagen and elastin, improving skin strength and elasticity. It accelerates the skin cell renewal process, improving the overall appearance and texture of the skin and minimising pores. It also boasts greater antibacterial action than other retinoids which makes it especially effective in the treatment of acne. The encapsulated DDS delivery system protects the Retinal against degradation and colour change of the finished formulation. Maximum delivery of the active ingredient to the deep skin levels is provided gradually for a longer lasting effect.

Recommended usage level: 1-10%

Vegan DDS Retinol

(INCI: Aqua, Mannitol, Phosphatidylcholine, Glycerin, Retinyl Palmitate, Cetyl Alcohol, Potassium Sorbate, Sodium Benzoate, Decyl Glucoside, Lauryl Glucoside, Xanthan Gum, Sodium Chloride)

Retinyl Palmitate is an ester of vitamin A and is one of the most reliable ways to provide the skin with vitamin A. On delivery to the deep skin levels, Retinyl converts to Retinol (Vitamin A) which in turn converts to Retinal (Retinaldehyde), before finally converting to Retinoic Acid.

Its ability to stimulate the production of hyaluronic acid, collagen and elastin is why it is considered one of the most potent anti-aging active ingredients. It also accelerates the cell regeneration process, improving the general appearance and texture of the skin and minimising the pore size. For this reason, together with its ability to regulate sebum production, it is commonly found in acne treatment products.

Furthermore, it represses the production of melanin thereby reducing the number and intensity of skin blemishes. Retinyl Palmitate is encapsulated in the Deep Delivery System (DDS) where it is specifically delivered to the deepest strata of the epidermis for a more intense and precise effect on the structures and cells located there. The use of DDS enables up to twelve times the amount of active ingredient to reach the interior of the skin compared to when applied freely.

Recommended usage level: 1 - 10%

Vegan FDS Zinc PCA

(INCI: Aqua, Mannitol, Phosphatidylcholine, Glycerin, Zinc PCA, Cetyl Alcohol, Sodium Benzoate, Sorbitan Oleate, Polysorbate 80, Xanthan Gum, Stearamine, Sodium Chloride, Dimyristoyl Phosphatidylcholine)

Zinc PCA is the zinc salt of the L-PCA (pyrrolidine carboxylic acid) a doubly active complex that provides the skin and hair with the beneficial effects of the zinc and L-PCA.

Zinc is involved not only in the synthesis of the nucleic acids, including the DNA, but also in the synthesis of proteins, cell division and in the structure and coenzymatic activation of many key molecules in the body and the skin. It also prevents the development of microbial infections thanks to its considerable antiseptic properties.

It has been shown that zinc reduces sebum secretion by inhibiting the 5 α - reductase. When joining L-PCA to an active molecule such as zinc, it becomes a physiological vector which optimises its bioavailability and in addition acts as a signalling molecule to stimulate the epidermal differentiation and strengthen the skin barrier function.

Recommended usage level: 1 - 10%

XERADIN™

(INCI: Propanediol, Aqua, Glycerin, Salvia Sclarea (Clary) Extract, Potassium Sorbate, Sodium Benzoate)

Vegetable source of 24-hour hydration based on adaptogenic mechanism of a xerophytic plant. Provides hydrating action thanks to its high sugar and flavonoid content. Immediate and all-day-long hydration power. Ideal for immediate action; face and body creams, milks and lotions, shampoos, aftershaves and bath moisturising products. It can also be used in 24-hour action products such as intensive moisturising products, products for dry skin, anti-ageing and extreme sports moisturisation.

Recommended usage level: 2 - 4%

WHITE NETTLE EXTRACT M.S

(INCI: Propylene glycol, Aqua, Lamium Album Extract, Sodium Benzoate, Potassium Sorbate)

WHITE NETTLE EXTRACT M.S is a water-soluble extract providing astringent, purifying, antiseptic, moisturising, soothing and sebum secretion regulation properties.

Recommended usage level: 0.5 – 5%

Contact Us

Interested?

Then contact the Infinity team
for more information:

T: 01344 354 900

E: technical@infinity-ingredients.co.uk

W: infinity-ingredients.co.uk