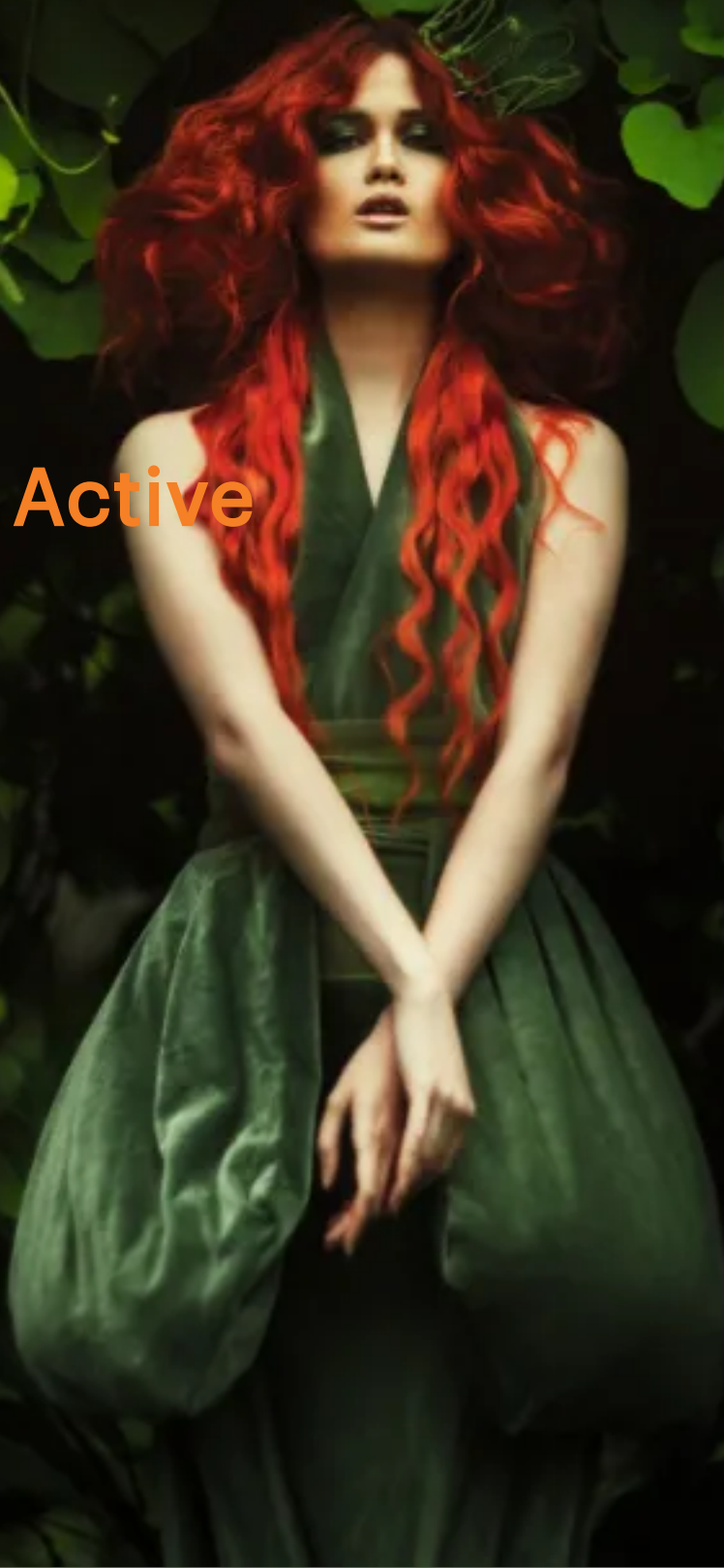


# INFINITY GREDIENTS

Inspiring Cosmetics

Pellets Active



## Pellets Active

### Actimp<sup>®</sup> Powder Bio

(INCI: Hydrolysed Lupin Proteins)

Lupine is a legume whose seeds are very high in protein and contain secondary oil and minor biologically active components. This plant is an important source of molecules for cosmetic and nutritional products. Actimp<sup>®</sup> Powder Bio is a concentrate of Lupine peptides obtained directly from the seeds, using a bio-enzymatic process patented by Laboratoires Expanscience.

This eco-designed active ingredient is sustainably sourced in France and helps strengthen the dermal-epidermal junction by stimulating expression of the essential components of the dermis-epidermis cohesion. It protects the key actors of the dermal matrix by inhibiting metalloproteinases 1, 9, 3 and restores the elastic properties of the skin.

Two versions exist: Actimp<sup>®</sup> Powder Bio\* and Actimp<sup>®</sup> Liquid.

Recommended usage level: 0.01 – 0.2%

### Alder Buckthorn Dye Extract - Hair

(INCI: Frangula alnus bark extract, Maltodextrin)

Dark Yellow soluble dye plant extract recommended for hair care applications.

Recommended usage level: 1 - 5%

### Alder Buckthorn Dye Extract

(INCI: Frangula alnus bark extract, Maltodextrin)

Orange soluble dye plant extract recommended for skin care and Personal Care applications.

Recommended usage level: Aqueous and transparent formulations: 0.1 - 0.5%; Emulsions: 1 - 3%

### Annato Dye Extract

(INCI: Maltodextrin, Annatto / CI 75120 / E160b, Potassium hydroxide)

Orange soluble dye plant extract recommended for skin care and Personal Care applications.

Recommended usage level: Aqueous and transparent formulations: 0.1 - 0.5%; Emulsions: 1 - 3%

## Aqualicia® Bio

(INCI: Hydrolysed Acacia Macrostachya Seed Extract, Maltodextrin)

Acacia macrostachya, a shrub native to Western Africa, grows in hot, dry environments. This species has adapted to these extreme climatic conditions and developed a natural strategy for capturing the water it needs to grow. Aqualicia Bio is a concentrate of peptides obtained from Acacia macrostachya seeds by a bio-enzymatic process that protects both people and the environment, patented by Laboratoires Expanscience.

This biomimetic active ingredient is sustainably sourced from Burkina Faso and helps trap and distribute water within the epidermis, controlling water loss and improving cohesion or the corneum and granulosum layers.

Recommended usage level: 0.1 – 0.5%

## Avocado Powder

(INCI: Persea Gratissima (Avocado) Fruit Powder)

The avocado has been a product of excellence at Laboratoires Expanscience for over 30 years. By choosing to work with local partners through our South African and Latin American avocado suppliers, Laboratoires Expanscience are taking concrete steps to fight deforestation, encourage best cultural practices based on tradition and contribute to strengthening the producer's economy and society.

Avocado powder is produced by grinding the whole dehydrated, delipidated fruit (stone, pulp and skin). The smooth avocado particles obtained (average granulometry: 100-500µm) act gently rather than abrasively on the skin surface.

An alternative to plastic micro-beads, plant scrubs remove dead cells and impurities from the skin mechanically and gently. It accelerates skin renewal and brightens the complexion. Plant scrubs soften and unify the epidermis and facilitate the penetration skin care products.

Recommended usage level: 0 - 100%

## Ascophyllum MicroPlant 50

(INCI: Ascophyllum nodosum powder)

Harvested in the Atlantic Ocean, Ascophyllum Nodosum is recognized for its slimming and firming properties, which makes it interesting for slimming and anti-ageing cosmetic applications.

Considered as a bulking agent providing naturality, Ascophyllum MicroPlant 50 is useful for formulating delightful cosmetic products such as wraps, exfoliating products or in solid cosmetics or toothpaste.

Recommended usage level: 1 - 100%

## Bamboo MicroPlant 25

(INCI: Bambusa arundinacea stem extract)

Bamboo MicroPlant 25 is a micronised powder made from the exudates of bamboo stems. Rich in plant silica, this ingredient is an alternative silica for a wide variety of applications including absorption of sebum, abrasive toothpaste and as an opacifier.

Its abrasive properties make it an interesting ingredient for formulating solid toothpastes. Considered as a bulking agent providing naturality, Bamboo MicroPlant 25 is useful for formulating cosmetic products in solid and powder such as: mattifying powder, loose powder, dry shampoo or solid toothpaste.

Recommended usage level: 1 - 100%

## Beige Clay

(INCI: Montmorillonite)

Beige Clay is a natural silicate, complex of aluminium, iron and magnesium. Ideal for detoxifying, remineralising and soothing. Can also provide natural colour to cosmetic products.

Recommended usage level: 1 - 40%

## BIOACTIVE TOTAROL™ Powder

(INCI: Totarol Powder)

A world first organic super ingredient sustainably sourced from the fallen New Zealand Totara Tree. Bioactive Totarol™ is a highly potent antioxidant (7 times more potent than vitamin E) and antibacterial (including acne causing bacteria), transforming human health by harnessing 100 million years of nature. In the 1990's international and New Zealand scientists conducted research on the To-tara tree.

They were intrigued by the fact that To-tara wood seemed to survive environmental attacks and degradation. The wood had proved to be virtually unblemished after hundreds of years of growth. After testing it, they discovered that Bioactive Totarol™ located in the heartwood of the tree was the magic ingredient at play.

Bioactive Totarol™ is able to penetrate harmful, pathogenic bacteria and destroy them. It also fights free radicals which are unstable molecules that can damage cells, contributing to many health concerns.

Successfully used in cosmetic formulations for the last 20 years, this highly effective, multi-tasking and versatile ingredient can be used across cosmetics, skin care, oral and pet care products. Offering a microbiome friendly solution for acne, anti-ageing and inflammation.

Recommended usage level: 0.2%

## Black Sand from Polynesia

(INCI: Silica)

Black Sand exfoliating powder from Polynesia for physical exfoliation of dead skin cells.

Recommended usage level: 0.2 to 10%, depending on application.

## Carrot Pink MicroPlant 25

(INCI: Daucus carota sativa root powder)

Carrot Pink MicroPlant 25 is made from purple carrots. Its intense purplish pink colour is due to its high concentration of anthocyanins. These anthocyanins have been identified as powerful antioxidants.

Considered as a bulking agent providing naturality, our Carrot Pink MicroPlant 25 is useful for formulating cosmetic products in solid and in colored powder such as lip scrub, gloss, blush, eye shadow or body wraps.

Recommended usage level: 1 - 100%

## Charcoal MicroPlant 50

(INCI: Charcoal powder)

Charcoal MicroPlant 50 is an activated charcoal obtained from the carbonisation of coconut shells. Coal has many cosmetic advantages. Detoxifying, absorbing, brightening, it is an ingredient regularly used in cosmetics in skincare (purifying masks, cleansing powders), bodycare (exfoliation, solid soaps), haircare (hair masks).

Recommended usage level: 1 - 100%

## ButterPlus™ E

(INCI: Octyl dodecanol, Euphorbia Cerifera (Candelilla) Wax, Isostearyl Isostearate, Stearyl Behenate, Polyhydroxystearic acid, Olea Europaea (Olive) Fruit Oil, Stearyl Alcohol, Behenic Acid, Stearyl Stearate, Cetyl Stearate)

ButterPlus™ E is a new Natural Structured Butter Complex™, designed to provide superb barrier qualities, combined with great moisturisation and excellent emollience.

It is a soft and creamy paste, that begins to liquefy on skin contact, its melt profile provides outstanding spread and play time with excellent skin feel, without greasiness.

ButterPlus™ E is also an excellent delivery system for incorporating essential oils into skincare preparations, providing extended oxidative stability, and aids in fragrance longevity. It's an elegant natural alternative to conventional type butters for a wide range of other skin and sun care applications.

Recommended usage level: 1 - 10%

## CERAFLUID

(INCI: Olive Glycerides, Ceramide NP)

CeraFluid is an exceptionally easy to formulate liquid Ceramide which shows the highest compatibility with skin components thanks to its natural Olive di- and triglycerides base.

It provides long-term hydration as well as improving adhesion amongst Corneocytes, thus regulating skin barrier for water retention and protecting it from external aggression.

It also improves skin elasticity and smoothness and helps to restore the barrier effect leading to protection and prevention of dehydration.

Recommended usage level: 0.5 - 2.5

## Chestnut Dye Extract - Hair

(INCI: Castanea sativa extract, Maltodextrin)

Beige/ Brown soluble dye plant extract recommended for hair care applications.

Recommended usage level: 1 - 5%

## Chestnut Pigment

(INCI: Castanea sativa extract, Potassium alum, Calcium carbonate)

Brown/ Beige insoluble natural pigment. Dispersible in oil. Ideal for make-up products, oily emulsions and soaps.

Recommended usage level: 1 - 5% in the oily phase.

## Coffee MicroPlant 50

(INCI: Coffea arabica seed powder)

Coffee is recognised for its energising and anti-fatigue properties with an intoxicating and strong aroma. It is a perfect ally for formulating a gourmet cosmetic products aimed at slimming and revitalising effects. Coffee MicroPlant 50 is ideal to formulate powder forms formulations as face or hair masks, wraps.

Recommended usage level: 1 - 100%

## Coreopsis Dye Extract - Hair

(INCI: Coreopsis tinctoria flower/leaf/stem extract, Maltodextrin)

Golden Yellow soluble dye plant extract recommended for hair care applications.

Recommended usage level: 1 - 5%

## Cocoa MicroPlant 50

(INCI: Theobroma cacao shell powder)

Symbol of sweetness and comfort, cocoa possesses well-being and anti-stress properties. The Cocoa MicroPlant 50 is ideal to formulate powder forms formulations as face or hair masks, wraps.

Recommended usage level: 1 - 100%

## Coreopsis Dye Extract

(INCI: Coreopsis tinctoria flower/leaf/stem extract, Maltodextrin)

Yellow soluble dye plant extract recommended for skin care and Personal Care applications.

Recommended usage level: Aqueous and transparent formulations: 0.1 - 0.5%; Emulsions: 1 - 3%

## Cranberry MicroPlant 50

(INCI: Vaccinium macrocarpon fruit powder)

Cranberry MicroPlant 50 is made from micronised Cranberry pulp. Cranberry is an interesting cosmetic ingredient for its protective, antioxidant and anti-ageing properties. It is regularly used in cosmetics to formulate anti-ageing and hair care products to strengthen the hair. Cranberry MicroPlant 50 can be used in formulations solid and powdered cosmetics such as face masks, anti-ageing lotions, wraps, blush, gloss and toothpaste.

Recommended usage level: 1 - 100%



## Cutch Dye Extract - Hair

(INCI: Acacia catechu wood extract, Maltodextrin)

Beige/ Brown soluble dye plant extract recommended for hair care applications.

Recommended usage level: 1 - 5%

## Dyer's Sorghum Dye Extract

(INCI: Sorghum bicolour leaf/stem extract, Maltodextrin)

Pink/ Red soluble dye plant extract recommended for skin care and Personal Care applications.

Recommended usage level: Aqueous and transparent formulations: 0.1 - 0.5%; Emulsions: 1 - 3%

## Effipulp®

(INCI: Persea Gratissima (Avocado) Fruit Extract, Maltodextrin)

Avocado research has been one of Expanscience's areas of excellence for the past 40 years, especially in Peru where Expanscience owns a plant to transform them through a patented process. This expertise is now illustrated by a number of patents.

Effipulp® is a concentrate of peptides resulting from an enzymatic hydrolysis of delipidated avocado pulp, obtained through a green process that respects the fruit's naturalness. This avocado pulp is exclusively developed by experts at the Laboratoires Expanscience to stimulate the endogenic synthesis of Hyaluronic Acid and increase the volume of the epidermis.

Thanks to its detoxifying effect, Effipulp® restores cellular function.

Recommended usage level: 0.1 – 0.6%

## DefensoWin™

(INCI: Ectoin)

A powerful pure molecule from a specific selected bacterial strain from cutting edge bio-fermentation technology.

This probiotic works by balancing the skin microenvironment to help prevent acute environmental stress whilst providing superior moisturisation and improving skin barrier function. Ectoin possesses excellent anti-acne properties and is clinically tested to provide high skin cell protection against osmotic stress.

Recommended usage level: 0.5 - 2%

## Dyer's Sorghum Dye Extract - Hair

(INCI: Sorghum bicolour leaf/stem extract, Maltodextrin)

Brown soluble dye plant extract recommended for hair care applications.

Recommended usage level: 1 - 5%

## EquiBiotics™ LA

(INCI: Maltodextrin, Lactobacillus)

EquiBiotics® LA is an active focussed on skin microbiota and sensitive skin. It is a probiotic-derived ingredient obtained by *L. acidophilus* PBS066 integral-structure preservation.

As post-biotic ingredient, EquiBiotics® LA, is able to modulate the amount of TNF-alpha to enhance the skin barrier and balance the skin microbiota. These activities make it the perfect active for sensitive skin.

It is designed to take care of the epidermis, treating it as a complex ecosystem considering multiple variables, especially the skin microbiota and the cross-talk with the skin. It supports skin microbiota and sensitive skin through, enhancement of the skin barrier, modulation of the skin microbiota and modulation of the induction of inflammation.

Recommended usage level: 1%

## EquiBiotics™ LRh

(INCI: Maltodextrin, Lactobacillus Ferment)

Probiotic-derived active ingredient obtained from L. rhamnosus LRH020 tyndallization process that naturally supports the resident microbiota through the promotion of commensal bacteria. It is able to exert a "prebiotic" effect on Synbalance® strains to promote probiotic growth as efficiently as glucose. EquiBiotics™ LRh strengthens the skin barrier and its natural defences to promote the skin ecosystem along with well-being by preventing the colonisation of pathogens. It significantly reduces TEWL, redness and wrinkle depth whilst improving elasticity and firmness. Ideal for biotic serums, active make-up, protective lotions, soothing gels, strengthening creams and skin relief treatments.

Recommended usage level: 0.5 - 2.0%

## ESSACHEM® JP-C

(INCI: Jojoba Esters)

A unique, solid, Natural Sensory Complex™ derived from Jojoba seed designed to offer a solid to liquefying effect when spread on the skin and hair that is extremely soft and non-greasy.

The ESSACHEM® JP-C offers exceptional texture and film forming properties for pigmented systems and melting creams without compromising the target skin sensory profile required in facial applications. Provides natural water-resistancy.

Recommended usage level: 5 - 12%

## ESSACHEM® BW

(INCI: Behenyl Olivat)

A natural based ester complex designed to offer thickening properties without compromising the spread of the formulation on the skin and hair. ESSACHEM® BW will thicken the oil phase of emulsions, lip applications and oil enriched cleansers to aid stabilisation whilst delivering an exceptional skin feel.

This natural complex will enhance the moisturisation properties and post rinse after feel from oil enriched body wash formulations without impacting the cleansing and foaming properties.

Recommended usage level: 2 - 8%

## ESSACHEM® SOW

(INCI: Stearyl Olivat)

ESSACHEM® SOW is a natural based ester complex designed to offer exceptional sensory properties for skin and hair. The ESSACHEM® SOW will liquify on contact with the skin delivering a soft, natural transition of spread.

This natural complex will enhance the moisturising properties while delivering a long lasting, non-tacky after feel that will provide protection to the skin. Used in emulsion systems, lip care and body wash formulations.

ESSACHEM® SOW is your ideal, natural sensory and structuring additive for lip and body applications.

Recommended usage level: 3 - 8%



## Evicare® aquatex 14

(INCI: Xanthan Gum)

Evicare® aquatex 14 is a Cosmos certified, non-GMO, transparent and vegan gelling agent. Electrolyte tolerant it is compatible with up to 40% alcohol.

Incredibly fast solubility and excellent transparency due to its granulated form.

Evicare® aquatex 14 offers a higher viscosity yield compared to Evicare® aquatex 80.

Recommended usage level: 0.1 – 1.0 %

## Evicare® complex 12

(INCI: Sodium Phytate)

Evicare® complex 12 is a natural substitute for EDTA. With a strong complexing function this readily biodegradable raw material traps undesired metal ions that accelerate oxidation and helps to protect sensitive materials in cosmetic products. By removing Magnesium and Calcium it makes water softer and helps to boost foam in shampoos and cleansing products. The pre-neutralized Evicare® complex 12 is the purest form of this natural chelator. Readily water soluble it can simply be added to the water phase. In emulsions it supports antioxidants by removing metal ions that catalyse oxidation processes. In surfactant-based products it helps to increase foam volume.

Recommended usage level: 0.1 - 0.3%

## Evicare® emulgiza light

(INCI: Glyceryl Stearate Citrate, Cetearyl Alcohol, Glyceryl Laurate)

Evicare® emulgiza light is a versatile O/W emulsifier blend that has the ability to create a variety of textures.

It is 100% natural, COSMOS/ECOCERT and NaTrue approved.

Supplied in pellets for ease of handling this fast-emulsifying emulsifier also offers a preservative boosting effect.

Recommended usage level: 3.5 - 5.0%

## Evicare® aquatex 80

(INCI: Xanthan Gum)

Evicare® aquatex 80 is a Cosmos certified, non-GMO, transparent and vegan gelling agent. Electrolyte tolerant it is compatible with up to 40% alcohol.

Fast solubility and excellent transparency. Highly compatible with surfactants and significantly reduced stringiness. Evicare® aquatex 14 offers a higher viscosity yield compared to Evicare® aquatex 80.

Recommended usage level: 0.1 – 1.0 %

## Evicare® cool

(INCI: Menthyl Lactate)

Evicare® cool acts as an active ingredients and can be used in cooling gels, sport creams, after sun care, shaving products and many more. Due to its mint-like odour it is also used in flavour (oral care) and fragrance applications.

Evicare® cool is an ester of Menthol and Lactic Acid sourced from natural origin

Recommended usage level: 0.1-2%

## Evicare® emulgiza rich

(INCI: Glyceryl Stearate Citrate, Cetearyl Alcohol, Glyceryl Behenate)

Evicare® emulgiza rich is a highly effective emulsifier blend for O/W-emulsions to create both low and high viscosities.

It is a combination of the well-known food grade emulsifier, Glyceryl Stearate Citrate (proven for many years to be safe and skin compatible) with two co-emulsifiers, Cetearyl Alcohol and Glyceryl Behenate in an easy-to-use pelletised blend, which is suitable to create a range of different formulation concepts.

Recommended usage level: 2.5 - 7%

## Evicare® GB

(INCI: Glyceryl Behenate)

Evicare® GB is a 100% natural O/W co-emulsifier and thickener. It imparts body and texture to emulsions by its crystallization in the emulsion and by forming a network between the oil droplets. It also lowers the surface tension between water and oil and therefore helps in the emulsification process like other long chain glyceryl monoesters. Due to its very long (C-22) carbon chain it is more effective and creates a different character in the cream. Evicare® GB can be added to the hot water phase as it requires melting to be activated. Mix it well prior to addition of the oil phase and homogenization.

Recommended usage level: 1 - 3%

## Evicare® GSC pof

(INCI: Glyceryl Stearate Citrate)

Evicare® GSC palm free is a true evergreen in O/W-technology. This powerful, robust and 100% natural emulsifier gives reliable and stable emulsions under many conditions. It works with all kinds of emollients and other ingredients and even with surfactants. For people concerned about the sustainability of palm products we have this important emulsifier in a palm free version, too. Evicare® GSC pof is used in natural and conventional skin care products. Skin care, face care, baby care or sun care – there are virtually no limits for this easy to use O/W-emulsifier. It can be used on its own or combined with co-emulsifiers or texturizers.

Recommended usage level: 2.0 - 3.0%

## Evicare® GSC

(INCI: Glyceryl Stearate Citrate)

Evicare® GSC is a true evergreen in O/W-technology. This powerful, robust and 100% natural emulsifier gives reliable and stable emulsions under many conditions. It works with all kinds of emollients and other ingredients and even with surfactants. It is food grade and like all other palm-based products of our range RSPO MB. Used in natural and conventional skin care products such as, face care, baby care and sun care – there are virtually no limits for this easy to use O/W-emulsifier. It can be used on its own or combined with co-emulsifiers or texturizers.

Recommended usage level: 2.0 - 3.0%

## Evicare® lipoguard C

(INCI: Ascorbyl Palmitate)

Evicare® lipoguard C is a 100% natural and GMO-free oil soluble form of Vitamin C. It regenerates oxidised Tocopherol to not only protect sensitive oils within your formulation but also aid product stability and extend shelf-life.

Recommended usage level: 0.1 – 0.5%

## Evicare® lipotex

(INCI: Hydrogenated Vegetable Oil)

Evicare® lipotex is a 100% natural and non-palm derived oil thickener.

It can increase the viscosity of liquid oils and convert them in soft fluid paste or even totally solid textures. It works with most vegetable or ester oils and makes application of oil phases such as massage oils neat and clean. Solid butters easily produced with Evicare® lipotex softly melt on the skin with our body temperature.

It is palm oil free and derived from rapeseed.

Evicare® lipotex melts in oils at a temperature of approximately 60-70°C. Mix it thoroughly for a homogeneous distribution and let it cool down to yield a pasty to solid oil phase. The viscosity achieved depends on the concentration.

Recommended usage level: 5 - 15%

## Evicare® PGS

(INCI: Polyglyceryl-3 Stearate)

A highly efficient emulsifier for oil-in-water (O/W) systems. It can be applied in any emulsion type, from soft to rich and with varying viscosities including sprays.

The product is composed of Polyglyceryl-3 Stearate, which has been used in cosmetics and food for many years. It is non-toxic and compatible with ingredients of any type or structure. The product is completely natural, manufactured from glycerin and stearic acid by esterification.

Evicare® PGS is COSMOS certified and conforms with other natural cosmetics certification labels.

Recommended usage level: 1 – 4% depending on oil phase and presence of co-emulsifiers.

## Evicare® magnolia

(INCI: Magnolia Officinalis Bark Extract)

Evicare® magnolia displays a high antimicrobial activity at low concentrations against a number of different micro-organisms, be it gram-positive or gram-negative bacteria, yeasts or moulds. Thus, the material can be used as a general antimicrobial booster in your formulation at low concentration.

This oil soluble and pH independent active can not only be used as an effective ingredient against skin pathogens such as the organisms responsible for acne, athlete's foot, dermatosis, oral bacterial etc., it can also be used as an antimicrobial in anhydrous systems such as, lipsticks, lip balms, bath oils etc. Due to the faint and pleasant herbal odour, mild taste and light colour, no unwanted olfactory characteristics will be imparted on the formulation.

In addition to these antimicrobial benefits, Evicare® magnolia also possesses an antioxidative property due to the phenolic structure of the two actives magnolol and honokiol.

Recommended usage level: 0.05% as an active in anti-acne or oral application; 0.2% - 0.3% as an anti-microbial booster

## Evicare® wintergreen

(INCI: Salicylic Acid)

Evicare® wintergreen is a natural antimicrobial active and preservative. Salicylic acid is well known in the industry and used as a preservative but even more as an active with specific function as anti-dandruff agent, anti-acne active and for its keratinolytic effect.

Evicare® wintergreen is 100% natural and sourced sustainably from the wintergreen shrub as a by-product from aroma sourcing. It is moderately water soluble and can simply be added to the water phase. It is often used in anti-acne and anti-dandruff products as a main active.

Recommended usage level: 0.5 - 2.5%

## Evicide® anisate

(INCI: Sodium Anisate)

Evicide® anisate is the nature-identical sodium salt of p-Anisic Acid and is especially designed for cosmetics with reliable performance against yeast and mold. When used in combination with the right anti-bacterial agent such as, Evicide® levulinate it is easily possible to entirely replace the use of traditional preservatives.

Evicide® anisate has a very good water-solubility and works perfectly as a strong fungicidal component for the full protection of surfactant-based products such as, shampoos and shower gels. In emulsions the use of a boosting agent is recommended.

Recommended usage level: 0.1 - 0.3%

## Evicide® anise

(INCI: p-Anisic Acid)

Evicide® anise is a well-known strong fungicide with a reliable performance against yeast and mold. When used in combination with the right anti-bacterial product from the Evicide® range it is easily possible to completely replace traditional preservatives. In surfactant-based products such as, shampoos and shower gels Evicide® anise can be used for protection against yeast and mold. In emulsions the use of a boosting agent is recommended.

Recommended usage level: 0.1 - 0.3%

## Evicide® anisate eco

(INCI: Sodium Anisate)

The 100% natural Evicide® anisate eco is the sodium salt of p-Anisic Acid and is especially designed for natural cosmetics with reliable performance against yeast and mold. When used in combination with the right anti-bacterial agent such as, Evicide® levulinate it is easily possible to entirely replace the use of traditional preservatives.

Evicide® anisate eco has a very good water-solubility and works perfectly as a strong fungicidal component for the full protection of surfactant-based products such as, shampoos and shower gels. In emulsions the use of a boosting agent is recommended.

Recommended usage level: 0.1 - 0.3%

## Evicide® anise eco

(INCI: p-Anisic Acid)

Evicide® anise eco is a well-known 100% natural fungicide, especially designed for natural cosmetics. When used in combination with the right anti-bacterial agent such as, Evicide® levulinate it is easily possible to replace existing traditional preservatives. Evicide® anise eco works perfectly and easily as a strong fungicidal component for the full protection of surfactant-based products such as, shampoos and shower gels. In emulsions Evicide® anise eco is used globally as well, in some cases the use of a boosting agent such as, Evicide® G 5 eco or Evicide® GMCY is recommended.

Recommended usage level: 0.1 - 0.3%

## Evicide® cassia

(INCI: Benzoic Acid)

The 100% natural Evicide® cassia is a traditional powerful food preservative: Benzoic Acid. Produced by fermentation from natural precursors from the Cassia tree this raw material can be used for natural cosmetics that strive to have 100% natural content. The performance as a preservative is well-known and used everywhere in the world of personal care. Evicide® cassia is water-soluble. It works extremely efficiently as a strong preservative component for the full protection of surfactant-based products such as, shampoos and shower gels. In emulsions Evicide® cassia, in some cases requires the use of a boosting agent.

Recommended usage level: 0.1 - 0.5%

## Evicide® GMCY

(INCI: Glyceryl Caprylate)

The 100% natural Evicide® GMCY is an interesting processing aid in emulsification processes. It can accelerate the emulsification process and save time in production. On top of this Evicide® GMCY is the best known and most widely used natural preservation boosting agent that improves the preservative effect of every known system. Evicide® GMCY is the preferred boosting agent in skin care formulations. It is especially powerful in all emulsion types and works at low levels to boost the performance of any preservative system. Perfect for all certified natural products.

Recommended usage level: 0.3 - 0.7%

## Evicide® G 8

(INCI: Caprylyl Glycol)

Evicide® G 8 provides the strongest antimicrobial activity in the family of glycols and is widely used in the personal care industry as a natural preservation boosting agent.

Evicide® G 8 is the preferred boosting agent in skin care formulations. It is especially powerful in all emulsion types and works at low levels to improve the performance of any preservative system. In addition, it can also accelerate the emulsification process to save time in production and provide protection to anhydrous products such as, lipsticks.

Recommended usage level: 0.3 - 0.7%

## Evicide® GML

(INCI: Glyceryl Laurate)

Evicide® GML has a number of exciting functions: It is a skin conditioner, surfactant thickener and also a co-emulsifier used for a quicker emulsifying process and for achieving a highly homogenous droplet dispersion in O/W emulsions. Evicide® GML is mostly known for its antimicrobial effect and preservative boosting capabilities in cosmetic formulations.

The short chain glyceryl monoesters show good efficacy against microorganisms. Within this group, Evicare® GMCY stands out in terms of efficacy but can sometimes compromise the emulsion stability. Evicide® GML is very interesting regarding its promoting effect for emulsion formation while having no issues of lowering viscosity or destabilising emulsions.

Recommended usage level: 0.5 - 2%

## Evicide® Potassium Sorbate eco

(INCI: Potassium Sorbate)

Evicide® Potassium Sorbate eco is an innovative natural alternative for petrochemical sourced Potassium Sorbate. It is sourced from Cassava and has a strong fungicidal activity.

Fully water-soluble and works perfectly against potential contamination from fungi, yeast and mold. For a full preservative effect other organic acids like Levulinic Acid should be added. This combination is also available in a ready to use blend Evicide® levulinate S eco.

Organic acids are the perfect antimicrobials for surfactant based products like shampoos or shower gels. In emulsions organic acids are used globally as well, in some cases the use of a boosting agent is recommended.

Recommended usage level: 0.1 - 0.5%

## EXFO-BAMBOO BODY

(INCI: Bambusa Arundinacea Stem Powder)

Physical exfoliant using bamboo with granules specifically sized for the body. Removes dead surface cells through a mechanical action that improves the texture of the skin, the natural regeneration of the epidermis and the penetration of cosmetic active ingredients.

Recommended usage level: 5 - 10%

## EXFO-OLIVE BODY

(INCI: Olea Europaea (Olive) Seed Powder)

EXFO-OLIVE BODY is produced from the pits of olive fruits (*Olea europae*), which are milled to obtain two cosmetic active compounds: one with particle size 200 µm and the other with particle size 500 µm.

It is a natural and physical exfoliant using upcycled olive stones with granules specifically sized for the body. It removes dead surface cells through a mechanical action that improves the texture of the skin, the natural regeneration of the epidermis and the penetration of cosmetic active ingredients.

Recommended usage level: 5-10%

## EXFO-AMBER

(INCI: Amber Powder)

Natural organic gem for physical skin exfoliation and skin purifying.

For smooth, bright and luminous skin with a touch of elegance. Removes dead surface cells through a mechanical action that improves the texture of the skin, the natural regeneration of the epidermis and the penetration of cosmetic active ingredients.

Recommended usage level: 5-10%

## EXFO-BAMBOO FACE

(INCI: Bambusa Arundinacea Stem Powder)

A natural exfoliant from bamboo, native to Asia.

At 200µm it is ideal for facial applications and is dispersible in both oil and water.

Recommended usage level: 5-10%

## FLOWER OF SUN

(INCI: Sea Salt (Maris Sal))

FLOWER OF SUN is a high quality of salt flower rich in magnesium and harvested under traditional method in the Provence region of France. These salt marshes are very special. The presence of a microscopic algae colours the pools creating, a colour chart from pink to purple. Flower of sun corresponds to the very thin layer made of salt flower crystals in the surface of the pools. Magnesium-rich seasalt is known as an effective treatment of sensitive skin as well as psoriasis and atopic dermatitis. Ideal for exfoliation, skin homeostasis and skin soothing.

Recommended usage level: 1-3%



## FOAMIN'TEA

(INCI: Camellia oleifera seed extract)

FOAMIN'TEA is a 100% natural and upcycled plant powder with surfactant assets and is a by-product of the tea seeds oil extraction. Thanks to its properties, FOAMIN'TEA can replace your usual surfactant to create a generous foaming effect, with cleaning and antimicrobial actions. This anionic surfactant is ideal for use in a variety of applications including: dry cleansers, micellar waters, shower gels, shampoos, cleaning pastes and toothpastes.

Recommended usage level: TBC

## Gardenia Blue MicroPlant 25

(INCI: Gardenia Florida fruit extract, Maltodextrin)

Gardenia Blue MicroPlant is a micronised powder made from a dry extract of gardenia flowers. The extract is micronised into very fine particles allowing it to be used as a plant pigment. The extreme fine size of its particles allows a dispersion or solubilisation in many formulas, providing the product with a deep natural blue colour and intense. Gardenia Blue MicroPlant 25 is designed to be dispersible in the oily phase of products such as lotion, soap, cleanser, waxes, butter, oily gel.

Recommended usage level: 1 - 100%

## Genipa Dye Extract

(INCI: Genipa americana fruit extract, Maltodextrin, Potassium Sorbate)

Blue soluble dye plant extract recommended for skin care and Personal Care applications.

Recommended usage level: Aqueous and transparent formulations: 0.1 - 0.5%; Emulsions: 1 - 3%

## Golden Rod Dye Extract - Hair

(INCI: Solidago virgaurea extract, Maltodextrin)

Yellow soluble dye plant extract recommended for hair care applications.

Recommended usage level: 1 - 5%

## Fucus MicroPlant 50

(INCI: Fucus vesiculosus powder)

Fucus are brown algae that have been used for more than a century for industrial uses (thalassotherapy cares, health food, cosmetics, fertilisers and feedstock). This algae rich in iodine, vitamins and minerals. It is recognised for its anti-fatigue and anti-inflammatory, moisturising and soothing properties. It is regularly used to formulate slimming and moisturising cosmetic products. Fucus MicroPlant 50 is ideal to formulate powder forms formulations as face masks or body wraps.

Recommended usage level: 1 - 100%

## GELLIN-K

(INCI: Glucomannan)

GELLIN-K is a gelling agent obtained by extracting polysaccharides from konjac's root. It provides colourless gels with high viscosity, leaving a protective film and fresh feeling on the skin. It can be used in either hot or cold processes and is the perfect natural alternative to synthetic polymers. Ideal to formulate shower gels, shampoos, slimming gels, gel scrub, freshness gel mask.

Recommended usage level: 0.1-1.5%

## Golden Rod Dye Extract

(INCI: Solidago virgaurea extract, Maltodextrin)

Yellow soluble dye plant extract recommended for skin care and Personal Care applications.

Recommended usage level: Aqueous and transparent formulations: 0.1 - 0.5%; Emulsions: 1 - 3%

## Goldenrod Pigment

(INCI: Solidago virgaurea extract, Potassium alum, Calcium carbonate)

Yellow insoluble natural pigment. Dispersible in oil. Ideal for make-up products, oily emulsions and soaps.

Recommended usage level: 1 - 5% in the oily phase.

## Green Clay

(INCI: Montmorillonite)

Green Clay is a natural silicate, complex of aluminium, iron and magnesium. Green Clay has the strongest adsorptive power compared to other types of clays.

Thanks to its richness in mineral salts and trace elements, it has many properties which makes it a good ingredients for skin and hair care products including, adsorbing and absorbing, detoxifying, remineralising and tonifying, purifying and repairing. It can also be used in toothpastes as a thickener and/ or as mild abrasive. Can also provide natural colour to cosmetic products.

Recommended usage level: 1 - 40%

## Green Clay - Illite

(INCI: Illite)

Green Clay is recommended for products used to treat greasy hair and oily, acne-prone skin. Provides antiseptic, purifying, remineralising and seborregulating activities. Can also provide natural colour to cosmetic products.

Recommended usage level: 1 - 40%

## Green Tea MicroPlant 50

(INCI: Camellia sinensis leaf)

Green tea is known for its antioxidant properties and a perfect cleansing agent with a pleasant taste. It is mainly used as a facial treatment, anti-ageing, slimming thanks to its richness in caffeine but also for cleansing the oral cavity.

Considered as a bulking agent providing naturality, our Green Tea MicroPlant 50 is useful for formulating solid and powder cosmetic products such as: face and hair masks, powder cleanser, anti-ageing lotion, cleansing foam body wraps, slimming cream or solid toothpaste.

Recommended usage level: 1 - 100%

## Henna Dye Extract - Hair

(INCI: Lawsonia inermis, Maltodextrin, Lysine hydrochloride)

Brown soluble dye plant extract recommended for hair care applications.

Recommended usage level: 1 - 5%

## HP I.O.Yellow/Red/Black 3AS

(INCI: Iron Oxides, Triethoxycaprylylsilane)

Highly pigmented and high purity grades of Iron Oxide with low oil absorption and good dispersibility and hydrophobicity. Ideal for use in powders, oil dispersion and W/O emulsion.

Recommended usage level: 0.1 - 2.0%

## Hyaluronic Tucuma Extra

(INCI: Astrocaryum Vulgare Seed Butter)

Sustainably upcycled Tucuma with zero waste. Highly nutritious, a natural source of pro-vitamin A, Hyaluronic Tucuma Extra presents itself as an excellent emollient, with a high spreading power and provides a silky and smooth touch to the skin, whilst inducing the synthesis of hyaluronic acid (27%).

Responsible for forming a transparent protective film on the skin without clogging pores or impairing lipid exchange, ideal for very dry skin, it is efficient in protecting against sun damage, skin revitalisation and restoration of damaged hair strands.

Due to the emollient and moisturising properties of Hyaluronic Tucuma Extra, it provides an excellent alternative to volatile silicones in hair products.

Recommended usage level: 0.5-5% hair and make-up; 0.5-3.0% body and facial cleansers; 0.5-30% body, face and bar soaps.

## Hydra-T

(INCI: Tremella fuciformis polysaccharide)

Native to China, the Tremella fuciformis is also known as the “snow mushroom” is considered a gift from nature. With its translucent colour and gelatinous texture, it is traditionally used in Chinese medicine to refine women’s beauty. HYDRA-T is 100% natural and Cosmos compliant.

It contains a low molecular weight natural hyaluronic acid, which can penetrate deeply into the skin. As we all know, Hyaluronic acid is a compound naturally present in the dermis that acts as a molecular sponge, where it is able to fix up to 1000 times its weight in water. Its function is to ensure the hydration of the skin, whilst helping form the connective tissue of the dermis to support collagen and elastin fibres.

It plays a fundamental role in the density and tone of the skin, but over the years, the production of hyaluronic acid by the body tends to decrease (a decline of around 6% per decade), which causes the appearance of the first wrinkles and fine lines on the surface of the epidermis. It is therefore advantageous to incorporate active ingredients rich in hyaluronic acid, such as Tremella fuciformis to the dermis as part of an anti-ageing strategy.

HYDRA-T is rich in polysaccharides and protects the skin whilst improving the impermeability of the skin barrier. Easy to formulate and does not induce a tightening effect on the skin. Ideal for use in anti-ageing cream, body care, decorative cosmetics and hair care.

Recommended usage level: 0.1 - 1%

## Indigo Micronized Leaves Dye Extract - Hair

(INCI: Indigofera tinctoria leaf powder, Maltodextrin)

Blue/ Black soluble dye plant extract recommended for hair care applications.

Recommended usage level: 1 - 5%

## Indigo Pigment

(INCI: Indigofera tinctoria extract)

Blue insoluble natural pigment. Dispersible in oil. Ideal for make-up products, oily emulsions and soaps.

Recommended usage level: 1 - 5% in the oily phase.

## Iron MicroPlant 50

(INCI: Iron powder)

Iron MicroPlant is a very fine powder derived from the mineral of iron. It allows the formulation of a unique masks that can be removed by a magnet. This Iron MicroPlant is innovative and interesting because it allows you to formulate skincare masks that you just need a magnet to remove it for a successful user experience! With the effect of the magnet on the MicroPlant, the magnetite is attracted. The magnetic field around the magnet is therefore visible.

Considered as a bulking agent providing naturality, our Iron MicroPlant 50 is useful for formulating solid and powder cosmetic products such as face masks.

Recommended usage level: 1 - 100%

## Laminaria MicroPlant 50

(INCI: Laminaria digitata powder)

Laminaria digitata belongs to the brown seaweed family. It lives fixed on the rocks from 0 to 10 meters under the level of the lower tide.

Laminaria MicroPlant 50 is ideal for formulating powder formulations such as, as face masks or body wraps.

Recommended usage level: 1 - 100%

## Lemon MicroPlant 25

(INCI: Citrus limon peel powder)

Lemon MicroPlant 25 is ideal for formulating cosmetic products due to its film-forming and astringent properties. It is therefore interesting for formulating cleansing cosmetic products. Its high pectin content has a film-forming effect, providing softness to the hair.

Lemon MicroPlant 25 is useful for formulating solid and powder cosmetic products such as powdered cleanser, face and hair mask, dry shampoo.

Recommended usage level: 1 - 100%

## Lithothamnium MicroPlant 50

(INCI: Lithothamnium calcareum powder)

Its fragile and calcareous fronds are impregnated with numerous marine elements and trace elements (more than 32) in a readily available form. It presents a prominent porosity which increases the availability of trace elements. Lithothamnium are used in many industries: Cosmetics (thalassotherapy), Health foods, anti-pollution industry, Dietetics for feedstock manufacturers.

The Lithothamnium MicroPlant 50 is ideal for formulating powder formulations such as, face masks or body wraps.

Recommended usage level: 1 - 100%

## Logwood Dye Extract - Hair

(INCI: Haematoxylum campechianum wood extract, Maltodextrin)

Brown/ Purple soluble dye plant extract recommended for hair care applications.

Recommended usage level: 1 - 5%

## Lucerne's Chlorophyll Dye Extract

(INCI: E141(ii) / CI 75810)

Green soluble dye plant extract recommended for skin care and Personal Care applications.

Recommended usage level: Aqueous and transparent formulations: 0.1 - 0.5%; Emulsions: 1 - 3%

## Lucerne's chlorophyll Pigment

(INCI: CI 75815 / E 141ii, Potassium alum, Calcium carbonate)

Green insoluble natural pigment. Dispersible in oil. Ideal for make-up products, oily emulsions and soaps.

Recommended usage level: 1 - 5% in the oily phase.

## Madder Dye Extract

(INCI: Rubia tinctorum root extract, Maltodextrin)

Yellow/ Orange soluble dye plant extract recommended for skin care and Personal Care applications.

Recommended usage level: Aqueous and transparent formulations: 0.1 - 0.5%; Emulsions: 1 - 3%

## Madder Pink Pigment

(INCI: Rubia tinctorum root extract, Potassium alum, Calcium carbonate)

Pink insoluble natural pigment. Dispersible in oil. Ideal for make-up products, oily emulsions and soaps.

Recommended usage level: 1 - 5% in the oily phase.

## Madder Rich Pigment

(INCI: Rubia tinctorum root extract, Potassium alum, Calcium carbonate)

Red insoluble natural pigment. Dispersible in oil. Ideal for make-up products, oily emulsions and soaps.

Recommended usage level: 1 - 5% in the oily phase.

## Lucerne's Chlorophyll Dye Extract - Hair

(INCI: E141(ii) / CI 75810)

Green soluble dye plant extract recommended for hair care applications.

Recommended usage level: 1 - 5%

## M-ZnO P AS

(INCI: Zinc Oxide, Triethoxycaprylylsilane)

High transparency, nano (30 ~ 50 nm) Zinc Oxide sunscreen with excellent UVA protection.

Recommended usage level: 5 - 25%

## Madder Dye Extract - Hair

(INCI: Rubia tinctorum root extract, Maltodextrin)

Red soluble dye plant extract recommended for hair care applications.

Recommended usage level: 1 - 5%

## Madder Rich Dye Extract

(INCI: Rubia tinctorum root extract, Maltodextrin)

Orange soluble dye plant extract recommended for skin care and Personal Care applications.

Recommended usage level: Aqueous and transparent formulations: 0.1 - 0.5%; Emulsions: 1 - 3%

## Mica GH AS

(INCI: Mica, Triethoxycaprylylsilane)

Triethoxycaprylylsilane treated extender pigment with excellent spreadability, shine and transparency. Provides a glossy and thin finish which is suitable for all types of applications.

Recommended usage level: 10 - 20%



## Mica L

(INCI: Mica)

This lamellar shaped mica has a high aspect ratio and provides a super glossy and transparent look. Mica L offers excellent spreadability and oil absorption. Suitable for all applications.

Recommended usage level: 10-20%

## Natalc

(INCI: Cellulose acetate, Tapioca starch)

Natalc is a plant alternative to talc, with the same hydrophobicity properties.

It is ideal to protect the skin against moisture and is a perfect natural plant ingredient to formulate baby powder.

Made from a manioc extract powder with cellulose acetate powder, it offers protective properties thanks to the hydrophobicity of the material.

Recommended for oily and acne prone skin care products, make-up, dry shampoo, baby powder, footcare, make-up and more.

Thanks to its absorbent assets and its extreme softness, Natalc provides a soft touch to formulations and can be used alone or in combination with other powders. Cold process.

Recommended usage level: 2-5%

## MT-012 SA

(INCI: Titanium Dioxide, Aluminum Hydroxide, Stearic Acid)

High transparency, nano (12-15 nm) coated Titanium Dioxide sunscreen with excellent UVB protection.

Recommended usage level: 5 - 15%

## Natural Black Pigment

(INCI: CI 77268:1)

Black insoluble natural pigment. Dispersible in oil. Ideal for make-up products, oily emulsions and soaps.

Recommended usage level: 1 - 5%

## Organic Snail Slime

(INCI: Snail secretion filtrate)

The composition of snail slime includes Allantoin for regeneration and healing; Collagen and Elastin to aid skin elasticity; Glycolic acid to reduce wrinkles, acne and hyperpigmentation; Polysaccharides to improve hydration; Peptide Antibiotics act as a protective barrier by destroying pathogens; sugars for moisturisation; Vitamin A, C and E to protect and soften the skin; and Essential Trace Elements allowing cells to work well.

The harvesting method is made in accordance with Annex 1 of Treaty of Rome which respects animal's well-being, which enables to get the Ecocert Greenlife certification according to Cosmos Standard. The extraction is from secretion from the "Petit gris" Hélix Aspersa Müller (the only slime recognised for its active principles).

Recommended usage level: Hand cream: 0.2 to 1.5%; Body cream: 0.5 to 1%; Make-up removing water: 0.2 to 0.8%; Eye contour: 0.2 to 2%; BB Cream: 0.5 to 2%; Facial mask: 0.2 to 3%; Serum: 0.8 to 4%; Regenerating cream (anti-wrinkle, stain-resisting): 2 - 8%; Anti-acne cream: 4 to 8%; Cream in burn scars and grafts: 5 to 8%

## P-Alumina150

(INCI: Alumina (or Synthetic Sapphire))

Provides soft focus and coverage for flawless skin.

P-Alumina 150 covers even the tiniest pores, wrinkles and blemishes making it ideal for powders, eyeshadow, foundation and lipstick.

Recommended usage level: 1 - 10%

## Organic Stevia Rebaudiana

(INCI: Stevia Rebaudiana Extract)

Traditionally used in Toothpastes and Mouthwashes for its sweetening activity it also limits bacterial growth and improving cicatrization. When used in skin care it is used for moisturising and anti-ageing, as well as oil-based products such as, lipsticks, gloss, lip balms etc., to bring good taste! In hair care it is often used in oily hair shampoos and can also aid anti-hair loss treatments as well as providing hair shine

Recommended usage level: 1 – 5%

## PHYTOSERENE

(INCI: Phytosterols)

PhytoSerene is an pure beta-sitosterol; a natural micro-nutrient plant lipid found in the cells and membranes of the Pine tree. Chemically, the material is very similar to cholesterol.

This plant sterol is different in its biological function and because humans do not synthesise sterols in the body, it is necessary to replace daily losses.

Phytoserene demonstrates the capacity to reduce skin redness after exposure to a chemical agent and to diminish TEWL by forming a protective barrier on the skin.

Recommended usage level: 0.5 - 2.5

## Pink Clay SP

(INCI: Kaolin)

Pink Clay SP is obtained by drying of natural clay (kaolinite). Then it is grinded to reduce the particle size.

Pink Clay SP is very rich in trace elements and mineral salts. It can constricts skin pores thanks to its astringent effect. Moreover, Pink Clay SP is antiseptic, and has regenerating properties.

It offers an healthy-glow effect, decreases redness and gives a clear complexion to tired skin.

It provides a pink colour

Recommended usage level: 1 - 40%

## PrincipHYAL<sup>®</sup> Aurora

(INCI: Sodium Hyaluronate)

PrincipHYAL<sup>®</sup> Aurora is a specific biotechnological fraction that targets skin regeneration. A very small molecular weight Sodium Hyaluronate, it is designed to obtain the perfect balance between skin penetration and skin activation.

AURORA optimises the regeneration cycle of the skin through an increased proliferation of cells and stimulation of the skin reparative and healing processes, resulting in an improvement in the global epidermis health and skin cohesion through a better integrity of the Epidermis layers.

Recommended usage level: 0.2 - 1.0

## PLANKTON GLASS FLOWER<sup>™</sup>

(INCI: Plankton Extract or Fragilaria Pinnata Extract)

PLANKTON GLASS FLOWER<sup>™</sup> is a dispersible volcanic powder with soft and silky touch. This phytoplankton created a shield of glass with a unique mineral composition to protect from light and pollution stress. On skin, it acts as a powerful digital and urbanshield. It can also be used as a natural soft focus (blurring) with mattifying effect.

Recommended usage level: 0.5-3%

## PrincipHYAL<sup>®</sup> Cube3

(INCI: Sodium Hyaluronate)

PrincipHYAL<sup>®</sup> Cube3 is a full-spectrum biotechnological fraction of Sodium Hyaluronate that targets short-term anti-ageing effects. A unique 3-in-1 ingredient which quickly improves the global epidermis health thanks to a strengthening of the barrier function of the skin.

Skin shows an immediate lifting effect when evaluated by elasticity, smoothness, number and depth of wrinkles, synthesis of ne elastin, and a general improvement of the skin aspect.

CUBE3 also enhances skin penetration of other lipophilic and hydrophilic active ingredients to optimise their activity

Recommended usage level: 0.5 - 1.0

## PrincipHYAL<sup>®</sup> Difference

(INCI: Sodium Hyaluronate)

PrincipHYAL<sup>®</sup> Difference is a full-spectrum biotechnological fraction of Sodium Hyaluronate that targets long-term anti-ageing effects. DIFFERENCE is a specific fraction that targets skin wrinkles, by increasing skin elasticity.

This anti-wrinkle activity (clinically evaluated in-vivo on smoothness, roughness, wrinkleness, scaliness, and wrinkle number) results in an overall visible improvement in global Epidermal health.

Recommended usage level: 0.5 - 1.0

## PrincipHYAL<sup>®</sup> OC

(INCI: Sodium Hyaluronate)

A full spectrum, second generation sodium hyaluronate specifically designed to promote support the oral ecosystem.

PrincipHYAL<sup>®</sup> OC not only provides moisturisation to the oral epithelium it also repairs oral tissue that has been damaged.

Ideal for inclusion within toothpastes, mouth washes, oral sprays and gels.

Recommended usage level: 1.0%

## PrincipHYAL<sup>®</sup> Line

(INCI: Sodium Hyaluronate)

Top quality Sodium Hyaluronate for cosmetic applications. Different actions linked to different molecular weights.

Range of Molecular Weights available:

PrincipHYAL (10)  
PrincipHYAL (10-50)  
PrincipHYAL (50-100)  
PrincipHYAL (200-400)  
PrincipHYAL (400-600)  
PrincipHYAL (600-800)  
PrincipHYAL (800-1000)  
PrincipHYAL (1000-1400)  
PrincipHYAL (1400-1800)  
PrincipHYAL (1800-2200)

Recommended usage level: 0.1 - 2%

## PrincipHYAL<sup>®</sup> Oligo

(INCI: Hyaluronic Acid)

Top quality Hyaluronic Acid for cosmetic applications.

Ideal to formulate anti-ageing and moisturising cosmetic products.

Recommended usage level: 0.1 – 2.0%

## PrincipHYAL<sup>®</sup> Signal-10

(INCI: Hyaluronic Acid)

PrincipHYAL<sup>®</sup> Signal-10 is a fast-track moisturiser derived from a stable extremely low molecular weight (standardised at less than 10 kDa) oligomer of Hyaluronic Acid.

SIGNAL-10 acts very quickly as it permeates more efficiently than classic forms of Hyaluronans. This stimulates the proliferation and regeneration of Fibroblasts, and gives a fast improvement in skin of moisturisation and elasticity.

Ideal for developing products where speed is everything and TURBO cosmetics is the concept.

Recommended usage level: 0.1 - 0.5

## Red Clay

(INCI: Montmorillonite)

Red Clay offers soothing, re-balancing and re-mineralising properties. Ideal for sensitive and reactive skin types. It is also very useful for tightening dilated pores and for attenuating small skin redness. Can also provide natural colour to cosmetic products for a healthy glow effect. In solid formulations, its pink-orange colour makes it a perfect additive for colouring soaps.

Recommended usage level: 1 - 40%

## Reseda Dye Extract

(INCI: Reseda Luteola extract, Maltodextrin)

Yellow soluble dye plant extract recommended for skin care and Personal Care applications.

Recommended usage level: Aqueous and transparent formulations: 0.1 - 0.5%; Emulsions: 1 - 3%

## PROVENCE CRYSTAL

(INCI: Sea Salt (Maris Sal))

Rich in minerals such as, calcium, sodium, magnesium and potassium, this thick layer of sea salt provides exfoliation for a soothing effect and skin homeostasis.

Recommended usage level: 1 - 80%

## Red Grape Micropowder 50

(INCI: Vitis vinifera skin powder)

Red grape is known to concentrate various polyphenols (OCP, tannins and anthocyanins) in its seeds and peel. As natural anti-oxidants they fight against free radicals which are responsible for the ageing of the skin.

The Red Grape MicroPlant 50 is ideal for formulating formulations such as, powder face or hair masks, wraps, solid shampoos.

Recommended usage level: 1 - 100%

## Reseda Pigment

(INCI: Reseda Luteola extract, Potassium alum, Calcium carbonate)

Yellow insoluble natural pigment. Dispersible in oil. Ideal for make-up products, oily emulsions and soaps.

Recommended usage level: 1 - 5% in the oily phase.

## Rhassoul Clay

(INCI: Moroccan lava clay)

Rhassoul is a Moroccan lava clay, part of the Hammam rituals and is used in both skin and hair care. Unlike soap, Rhassoul cleanses without surfactant by naturally absorbing grease, sebum and impurities to purify the skin and hair.

Rhassoul Clay is ideal for formulating solid and powder cosmetic products such as, powdered face masks, cleansing pastes, powder cleansers, lotions, body wraps, scrubs, powdered shower gels, solid soap, shampoo bars, dry shampoo and hair masks.

Recommended usage level: 1-40%

## Sappanwood Dye Extract

(INCI: Caesalpinia sappan bark extract, Maltodextrin)

Orange/ Red soluble dye plant extract recommended for skin care and Personal Care applications.

Recommended usage level: Aqueous and transparent formulations: 0.1 - 0.5%; Emulsions: 1 - 3%

## Sappanwood Pigment

(INCI: Caesalpinia sappan extract, Potassium alum, Calcium carbonate)

Pink/ Red insoluble natural pigment. Dispersible in oil. Ideal for make-up products, oily emulsions and soaps.

Recommended usage level: 1 - 5% in the oily phase.

## Rice MicroPlant 25

(INCI: Oyza sativia powder)

Rice MicroPlant 25 is a multifunctional ingredient used as a mattifying agent, texturiser, bulking agent, to provide softness and as an alternative to titanium. Thanks to its starchy composition, Rice MicroPlant 25 brings a texturising effect to the product and extreme softness to the final product.

It improves adhesion to the skin leaving a soft and silky touch. It is useful to formulate cosmetic products solid and powder such as mask, powder or solid cleanser, solid shampoo.

Recommended usage level: 1 - 100%

## Sappanwood Dye Extract - Hair

(INCI: Caesalpinia sappan bark extract, Maltodextrin)

Pink/ Red soluble dye plant extract recommended for hair care applications.

Recommended usage level: 1 - 5%

## SB K SSA

(INCI: Silica, Dimethicone)

Dimethicone treated spherical powder with excellent rolling effect and UVB cover. Ideal for loose and pressed powders.

Recommended usage level: 1 - 5%



## Sericite H

(INCI: Mica (Sericite))

Matte texture Sericite with excellent hardness in pressed powder pact.

Perfect application for talc free cosmetics. Very soft and smooth lamellar shape fine powder.

Also available with various surface treatments.

Recommended usage level: 5 - 10%  
Eyeshadows, 20-30% Powder Pact

## Sericite L

(INCI: Mica (Sericite))

High purity grade (low heavy metals) Sericite with high aspect ratio, excellent spreadability and high whiteness. Very smooth, soft, lamellar shape with high aspect ratio perfect for powders.

Also available with various surface treatments.

Recommended usage level: 5 - 10%  
Eyeshadows, 20-30% Powder Pact

## Sericite S

(INCI: Mica (Sericite))

Lustrous and transparent Sericite with excellent spreadability. Sleek, thin finish lamellar shape with a high aspect ratio and good affinity to the skin.

Also available with various surface treatments.

Recommended usage level: 5 - 10%  
Eyeshadows, 20-30% Powder Pact

## Sericite J

(INCI: Mica (Sericite))

Glossy and transparent Sericite with excellent spreadability and high whiteness. Very smooth, soft, lamellar shape with high aspect ratio and good affinity to the skin.

Also available with various surface treatments.

Recommended usage level: 5 - 10%  
Eyeshadows, 20-30% Powder Pact

## Sericite M

(INCI: Mica (Sericite))

Matte texture Sericite with good spreadability and affinity to the skin.

High whiteness, very smooth, soft lamellar shape and high aspect ration powder. Also available with various surface treatments. Alternative to talc.

Recommended usage level: 5 - 10%  
Eyeshadows, 20-30% Powder Pact

## Silica L-51(105)

(INCI: Silica)

Non-treated silica bead with high oil absorption (105ml/100g). Ideal for make-up and skin care.

Recommended usage level: 5 - 15%

## Skinhairgium® Bio

(INCI: Lepidium Meyenii Root Extract, Maltodextrin)

Active ingredient from a patented bio-enzymatic process Extract of Maca, a sacred root sustainably sourced from Peru. Maca is revered for its medicinal properties and grows in fragile soils. This tuber is one of the very rare plants able to survive in the extreme climatic conditions common on the high Andean plateaux. It is commonly called "Peruvian ginseng" for its energising properties.

Skinhairgium® Bio is a concentrate of active molecules obtained from an enzyme hydrolysis of Maca powder, a process that protects both people (Fair for Life certified by Ecocert) and the environment, patented by Laboratoires Expanscience. It stimulates cellular renewal, reduces wrinkles and improves luminosity and radiance of skin tone. It also stimulates hair growth and slows down hair loss as well as fortifying and revitalising hair.

Two versions exist: Skinhairgium® Bio (powder) and Skinhairgium® 2 (liquid).

Recommended usage level: 0.01 – 0.5%

## Spirulina MicroPlant 50

(INCI: Spirulina maxima powder)

Spirulina is a microscopic filamentous alga belonging to the blue algae family. It is very rich in proteins and vitamins A & E. Rich in antioxidants, Spirulina is useful in skin care to reduce wrinkles, or in hair care as fortifying agent. It is also widely used in thalassos, spas and balneotherapy as wraps or masks.

The Spirulina MicroPlant 50 is ideal for formulating powder formulations such as, face or hair masks, solid cleanser, solid soaps, solid shampoos or wraps.

Recommended usage level: 1 - 100%

## Sorghum Pigment

(INCI: Sorghum bicolour leaf/stem extract, Potassium alum, Calcium carbonate)

Brown insoluble natural pigment. Dispersible in oil. Ideal for make-up products, oily emulsions and soaps.

Recommended usage level: 1 - 5% in the oily phase.

## Sweetone® Bio

(INCI: Schisandra Sphenanthera Fruit Extract, Maltodextrin)

Schisandra sphenanthera is a creeper whose berries are widely used in traditional Eastern, and particularly Chinese, medicine.

Sweetone® Bio is a concentrate of active molecules extracted from Schisandra Sphenanthera berries by a bio-enzymatic process that protects both people and the environment, patented by Laboratoires Expanscience. This active ingredient from biotechnological process is sourced from the central region of China.

Sweetone® Bio reduces redness by controlling specific vascular and neurogenic inflammation. Skin tone is unified and the synthesis of melanin is reduced, limiting its spread through the epidermis.

Recommended usage level: 0.1 – 0.5%

## Syn-Mica HP1/HP2/HP3 AS

(INCI: Synthetic Fluorphlogopite, Triethoxycaprylylsilane)

High purity grade Synthetic Mica (low heavy metal content). Lamellar structure with high aspect ratio, excellent spreadability and long lasting cover for all applications. HP1 grade offers a matt cover and HP3 provides a glossy transparent finish.

Recommended usage level: 10 - 20%

## Talc L AS

(INCI: Talc, Triethoxycaprylylsilane)

OMC processed lamellar shape talc. Transparent and an excellent affinity to skin with smooth, soft and good spreadability. Ideal for all applications.

Recommended usage level: 30 - 50%

## Talc 2K DAS

(INCI: Talc, Dimethicone, Triethoxycaprylylsilane)

Lamella shape with high aspect ratio and fine particle appearance offering a sleek and thin finish with high whiteness.

Good spreadability and pressability with water repellence. Long lasting. Ideal for loose and pressed powders

Recommended usage level: 30 - 50%

## TANOSITOL™ SPE

(INCI: Inositol)

TANOSITOL™ SPE is a novel plant active ingredient, which intensifies and prolongs skin tanning through an innovative mechanism based on the activation of second messengers involved in melanin synthesis, providing a longer lasting bronzing effect.

TANOSITOL™ SPE stimulates post-irradiation melanogenesis, thus accelerating the late phase of suntan providing a quicker, safer and longer lasting skin pigmentation.

Furthermore, it prevents cutaneous photo-ageing by increasing collagen I synthesis for a safer and more intense tan.

Recommended usage level: 0.05 – 0.1%

## TechnoHYAL HYAPEARL

(INCI: Triolein, Sodium Hyaluronate)

TechnoHYAL HyaPearl is a highly effective lipo-available Sodium Hyaluronate suitable for decorative and anhydrous formulations. This cutting edge and unique technology entraps Hyaluronic Acid in a matrix of synergistic triglycerides (Triolein) from 100% natural origin, enabling HyaPearl to better penetrate the skin compared to HA in water.

HyaPearl significantly improves moisturisation, strengthens the barrier function of the skin and provides excellent skin feel with a smooth gliding effect.

Recommended usage level: 0.5 - 1.5

## TiO2 CR-50 AS

(INCI: Titanium Dioxide, Aluminum Hydroxide, Triethoxycaprylylsilane)

2% Triethoxycaprylylsilane treated. Excellent affinity to skin and hydrophobicity with high opacifying properties.

No aggregate, each primary particles are coated by OMC process. Ideal for use in powders, oil dispersion and W/O emulsions.

Recommended usage level: 5 - 10%

## TiO2 CR-50 DSG

(INCI: Titanium Dioxide, Aluminum Hydroxide, Disodium Stearoyl Glutamate)

3% Disodium Stearoyl Glutamate treated Titanium Dioxide with high opacifying properties. Excellent affinity to skin, hydrophobicity and dispersibility.

Ideal for use in W/O emulsions, oil dispersions and powders.

Recommended usage level: 5 - 10%

## WHEAT CERAMIDE P

(INCI: Triticum vulgare (Wheat) seed extract)

Wheat Ceramide P is extracted from a by-product of wheat seed. It is a polar lipid fraction of wheat seed. As a consequence, it doesn't contain gluten protein fraction. Naturally present into the skin, ceramide is a molecule known to act as a cement between skin cells, which ensures an effective barrier function. Ceramide is also used as a major ingredient in cosmetic product formulations (skin and hair care) due to its nourishing assets. Ceramide is a natural nutrient which nourishes hair and epidermis. Ideal for dry and sensitive skin.

Recommended usage level: 0.3%

## White Sand from Polynesia

(INCI: Calcium carbonate)

White Sand from Polynesia for physical exfoliation of dead skin cells.

Recommended usage level: 0.2 to 10%, depending on application.

## TM 50 DAS

(INCI: Titanium Dioxide, Aluminum Hydroxide, Mica, Dimethicone, Triethoxycaprylsilane)

Composite pigment of Titanium Dioxide and Mica (50:50) treated with Alkyl Silane and Dimethicone. Provides good affinity to skin and excellent hydrophobicity.

No dragging or shineness. Spreads evenly and enables a sleek and thin finish with good spreadability that's non-drying. Ideal for pressed and loose powders.

Recommended usage level: 5 - 15%

## White Clay

(INCI: Kaolin)

White clay is very effective for fragile and dry skin thanks to its adsorbing, purifying, cleansing, absorbing and mattifying, repairing and soothing properties. White clay can be used in toothpastes as a thickener and/ or as mild abrasive.

Recommended usage level: 1 - 40%

## ZENIGLOSS® S

(INCI: Castor Isostearate Beeswax Succinate)

This unique solid polymer with its high molecular weight improves substantivity and puts exceptional gloss in a wide variety of applications.

ZENIGLOSS® S has excellent pigment wetting and dispersion attributes. It is ideal for use in colour cosmetics, AP sticks, makeup sticks, and pencils as well as body scrubs.

It is natural and biodegradable and 100% active.

Recommended usage level: 2 - 10%

## ZENIGLOSS® UPH

(INCI: Castor Isostearate Succinate, Hydrogenated Castor)

This natural Ultra-Pure polymer has been created specifically for demanding applications where low odour and taste are a requirement. It has a high molecular weight, which improves substantivity, adhesion and exceptional gloss in lip sticks.

This unique compound has superb pigment wetting and dispersion properties. It also offers excellent TEWL properties and is easily formulated into finished products.

Recommended usage level: 2 - 25%

## ZENIVEG™

(INCI: Octyl dodecanol, Euphorbia Cerifera (Candelilla) Wax, Stearyl Behenate, Polyhydroxystearic acid, Behenic Acid, Cetyl Stearate, Stearyl Stearate)

Zeniveg™ is a soft and creamy all vegetable moisturiser derived from ingredients of natural origin. It is derived from the trans-esterification of a fatty alcohol with various vegetable waxes, having a similar profile to beeswax.

Zeniveg™ provides superb barrier and moisturising qualities without the greasiness of conventional butters. It has great skin feel, and starts melting at skin temperature giving it good transition and play time.

Zeniveg™ offers outstanding formulation flexibility in high water containing skin care emulsions, from light daily lotions to heavy moisturising body butters.

Recommended usage level: 1 - 10%

## Zinc Oxide AS

(INCI: Zinc Oxide, Triethoxycaprylylsilane)

Triethoxycaprylylsilane treated Zinc Oxide that provides excellent shielding against UV-A. Good dispersibility in W/S type emulsion products.

Light texture with no stickiness. Long lasting. Suitable for all applications.

Recommended usage level: 2 - 5%

# Contact Us

Interested?

Then contact the Infinity team  
for more information:

T: 01344 354 900

E: [technical@infinity-ingredients.co.uk](mailto:technical@infinity-ingredients.co.uk)

W: [infinity-ingredients.co.uk](http://infinity-ingredients.co.uk)