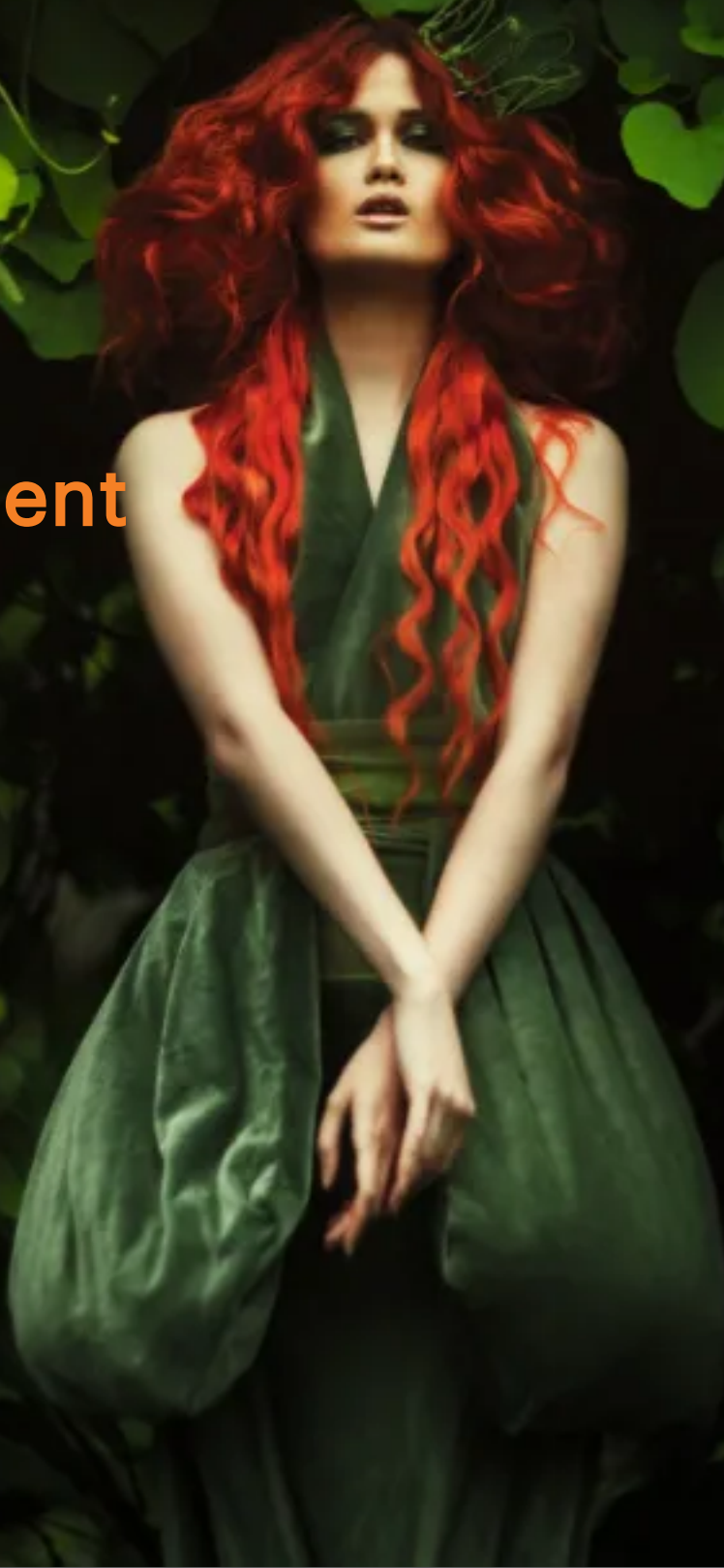


# INFINITY GRADIENTS

Inspiring Cosmetics

Treatment



## Treatment

### 5 $\alpha$ -Avocuta<sup>®</sup> T

(INCI: Butyl Avocadate, Tocopherol)

Avocado research has been one of Expanscience's areas of excellence for the past 40 years. This expertise is now illustrated by a number of patents.

5 $\alpha$ Avocuta<sup>®</sup> T contains plant esters extracted from avocado oil using a green chemical process. The purity of the active ingredient is guaranteed to be over 95% in esters through a molecular distillation process patented by Expanscience.

This active ingredient from green chemistry is sustainably sourced from Mexico, Peru and South Africa. 5 $\alpha$ Avocuta<sup>®</sup> T reduces excessive secretions of sebum from the scalp and skin, reduces the shiny appearance of the T-zone and decreases dandruff.

Recommended usage level: 0.5 – 2%

### AFFIPORE<sup>™</sup>

(INCI: Butylene Glycol, Barosma Betulina Leaf Extract, Citric Acid)

AFFIPORE<sup>™</sup> is obtained from the leaves of Barosma betulina, a traditional African ingredient that refines pores.

It works by inhibiting the action of APN (aminopeptidase N) in the sebocyte membrane by blocking the peptide induced stimulation of APM, reducing excessive cell differentiation and sebum secretion. By decreasing the final amount of sebum on the skin surface, all signs of oily skin are improved, reducing and refining enlarged facial pores, mattifying shiny patches and eliminating oiliness.

Recommended usage level: 1 – 3%

## AlphaComplete® Face

(INCI: Bisabolol and Melaleuca alternifolia leaf oil)

AlphaComplete® is a 100% natural and bactericidal alternative for the treatment of acne, itch relief and oil control. Result of a potent bactericidal mixture in natural and bacteriostatic in low concentrations.

Properties include antimicrobial, anti-irritant, anti-inflammatory, regenerative and healing properties, providing significant efficacy in the treatment of acne and excessive oiliness. It also has bacteriostatic and antiseptic action besides antifungal activity.

Recommended usage level: 1 - 5%

## AlphaShield

(INCI: Bisabolol, Melaleuca alternifolia leaf oil)

ALPHASHIELD is a powerful synergy of certified essential oils from a sustainable source to provide a potent germicidal action by quickly eliminating (within one minute) 99.99% of germs (gram positive and negative bacteria, as well as fungi). The Active is hypoallergenic and anti-irritant.

ALPHASHIELD helps in the antiseptic power of formulations and can be combined with the action of surfactants for complete cleaning or as antiseptic solutions (also containing alcohol or benzalkonium chloride) for topical use. Its lipophilic nature and high soothing power inhibit the appearance of itching, in addition to reducing adverse reactions caused by disinfection and excessive sanitisation of the skin.

ALPHASHIELD is a dermo-purifier that restores the health of the skin, providing moisturisation and control of moisture loss. This active is safe, even in products without rinsing, protecting against contamination by microorganisms. ALPHASHIELD is a cosmetic active that represents a new proposal to conventional bactericides, such as triclosan, for a safe, effective and ecological approach.

ALPHASHIELD can still be used as a natural preservative, allowing the finished product to use the "preservative free" claim.

Recommended usage level: 0.5 – 5

## APIBREEZE™

(INCI: Aqua, Gluconolactone, Glycerin, Honey, Lactobionic Acid)

APIBREEZE™ is a 100% natural active ingredient that offers a mild skin renewal together with and ethical and responsible supplying with biotechnological polyhydroxy acids (PHAs) as gluconolactone and lactobionic acid, and an award-winning multi-flower honey, locally produced, to meet growing demand for sustainability and well-tolerated ingredients.

In vitro have demonstrated that APIBREEZE™ has a keratolytic action as effective as glycolic acid with no irritant effects.

Suitable for sensitive skin, it prevents premature ageing, promoting the optimal maintenance of the extracellular matrix and boosting collagen, ensuring a moisturising effect, acting on hyaluronic acid synthesis.

The glow of a new skin emerges naturally, whatever the skin type, season, or time of day.

Recommended usage level: 5 – 10% hydration; 20% exfoliation

## APPLE VINEGAR

(INCI: Vinegar)

APPLE VINEGAR provides cell regeneration by its AHA's content, as well as antioxidant and astringent properties.

Recommended usage level: 1 – 3%

## APPLE - ECO

(INCI: Aqua, Glycerin, Pyrus Malus (Apple) Fruit Extract, Potassium Sorbate, Sodium Benzoate)

APPLE – ECO is standardised extract in Glycerin / water from the fruits of "Pyrus malus L.", harvested from organic crop. It contains 0.5 - 1.5% of reducing sugars.

Trans-epidermal water loss (TEWL) regulatory activity is due to the carbohydrates and  $\alpha$ -hydroxyacids (AHA) in apple. Most AHA's are natural active compounds that promote normal keratinization and desquamation.

Carbohydrates are hygroscopic, namely they adsorb water thus contributing to keep a healthy moisture level in the horny layer. Due to its high content in phenol compounds and vitamin C, apple has antioxidant properties, scavenges free radicals and protects the organism from cell deterioration.

Apple Eco is highly recommendable to formulate cosmetic products with moisturising activity on skin and hair.

## Bamboo MicroPlant 25

(INCI: Bambusa arundinacea stem extract)

Bamboo MicroPlant 25 is a micronised powder made from the exudates of bamboo stems. Rich in plant silica, this ingredient is an alternative silica for a wide variety of applications including absorption of sebum, abrasive toothpaste and as an opacifier.

Its abrasive properties make it an interesting ingredient for formulating solid toothpastes. Considered as a bulking agent providing naturality, Bamboo MicroPlant 25 is useful for formulating cosmetic products in solid and powder such as: mattifying powder, loose powder, dry shampoo or solid toothpaste.

Recommended usage level: 1 - 100%

## Bearberry Leaf Cellular Extract

(INCI: Arctostaphylos uva ursi Leaf Extract)

Delivering “true to nature” hydrophilic plant profiles. Cellular Extraction harnesses the species’ water-soluble blueprint of phyto-compounds and their derivatives (the entourage), in their synergistic relationships, as they exist in the cell. Extracted rapidly under high pressure, NATIVE EXTRACTS maintain the molecules’ natural integrity.

Committed to conscious manufacturing, Cellular Extracts are created using purified, deionised, rain-harvested water and less plant material than past processes to produce a natural True to Nature plant extract, that is water-wise, repurposes waste, traceable to source, transparent in composition.

The NE Bearberry Cellular Extract delivers the natural molecules this botanical species can offer in a water-soluble format, including arbutin, kaempferol, quercetin, gallic acid (GA), catechin and flavonoid glycosides.

Ideal for haircare, blemished skin, brightening, hair loss and premature ageing applications. Available as a concentrate and as a 10% dilution.

Recommended usage level: 0.5 – 1% concentrate; 1 – 5% dilution

## BIOACTIVE TOTAROL™ Powder

(INCI: Totarol Powder)

A world first organic super ingredient sustainably sourced from the fallen New Zealand Totara Tree. Bioactive Totarol™ is a highly potent antioxidant (7 times more potent than vitamin E) and antibacterial (including acne causing bacteria), transforming human health by harnessing 100 million years of nature. In the 1990’s international and New Zealand scientists conducted research on the To-tara tree.

They were intrigued by the fact that To-tara wood seemed to survive environmental attacks and degradation. The wood had proved to be virtually unblemished after hundreds of years of growth. After testing it, they discovered that Bioactive Totarol™ located in the heartwood of the tree was the magic ingredient at play.

Bioactive Totarol™ is able to penetrate harmful, pathogenic bacteria and destroy them. It also fights free radicals which are unstable molecules that can damage cells, contributing to many health concerns.

Successfully used in cosmetic formulations for the last 20 years, this highly effective, multi-tasking and versatile ingredient can be used across cosmetics, skin care, oral and pet care products. Offering a microbiome friendly solution for acne, anti-ageing and inflammation.

Recommended usage level: 0.2%

## BIOACTIVE TOTAROL™ T9 Cosmetic

(INCI: Totarol Powder, Helianthus annuus seed oil, Polysorbate 60, Caprylhydroxamic Acid, Glyceryl Caprylate, Glycerin)

A world first organic super ingredient sustainably sourced from the fallen New Zealand Totara Tree. Bioactive Totarol™ is a highly potent antioxidant (7 times more potent than vitamin E) and antibacterial (including acne causing bacteria), transforming human health by harnessing 100 million years of nature. In the 1990's international and New Zealand scientists conducted research on the To-tara tree.

They were intrigued by the fact that To-tara wood seemed to survive environmental attacks and degradation. The wood had proved to be virtually unblemished after hundreds of years of growth. After testing it, they discovered that Bioactive Totarol™ located in the heartwood of the tree was the magic ingredient at play.

Bioactive Totarol™ is able to penetrate harmful, pathogenic bacteria and destroy them. It also fights free radicals which are unstable molecules that can damage cells, contributing to many health concerns.

Successfully used in cosmetic formulations for the last 20 years, this highly effective, multi-tasking and versatile ingredient can be used across cosmetics, skin care, oral and pet care products. Offering a microbiome friendly solution for acne, anti-ageing and inflammation.

Recommended usage level: 0.8-1%

## BIRCH OIL

(INCI: Helianthus Annuus (Sunflower) Seed Oil, Betula Alba Leaf Extract, Tocopherol)

BIRCH OIL is an anti-cellulite. Firming. Anti-inflammatory. Sensitive and/ or irritated skin. Anti-seborrhea. Hair care. Antimicrobial. Purifying. Antiseptic.

Recommended usage level: 0.5-5%



## Bitter Orange Cellular Extract

(INCI: Citrus aurantium amara Peel Extract; Citrus aurantium amara (Bitter Orange) Peel Extract)

Delivering “true to nature” hydrophilic plant profiles. Cellular Extraction harnesses the species’ water-soluble blueprint of phyto-compounds and their derivatives (the entourage), in their synergistic relationships, as they exist in the cell.

Extracted rapidly under high pressure, NATIVE EXTRACTS maintain the molecules’ natural integrity.

Committed to conscious manufacturing, Cellular Extracts are created using purified, deionised, rain-harvested water and less plant material than past processes to produce a natural True to Nature plant extract, that is water-wise, repurposes waste, traceable to source, transparent in composition.

Bitter Orange offers an array of applications from blemish prone and reactive prone skin, and hydration to under eye care.

Recommended usage level: Recommended usage level: 0.5 – 1% concentrate; 1 – 5% dilution

## Blackwood Wattle Cellular Extract

(INCI: Acacia melanoxylon Leaf Extract)

Delivering “true to nature” hydrophilic plant profiles. Cellular Extraction harnesses the species’ water-soluble blueprint of phyto-compounds and their derivatives (the entourage), in their synergistic relationships, as they exist in the cell. Extracted rapidly under high pressure, NATIVE EXTRACTS maintain the molecules’ natural integrity.

Committed to conscious manufacturing, Cellular Extracts are created using purified, deionised, rain-harvested water and less plant material than past processes to produce a natural True to Nature plant extract, that is water-wise, repurposes waste, traceable to source, transparent in composition.

The ideal partner for anti-ageing and blemish prone skin.

Recommended usage level: 0.5 – 1% concentrate; 1 – 5% dilution

## BLACK PEPPER EXTRACT H.GL. - M.S

(INCI: Aqua, Glycerin, Piper Nigrum (Pepper) Seed Extract, Sodium Benzoate, Potassium Sorbate)

BLACK PEPPER EXTRACT H.GL. - M.S. is a water-soluble extract offering antioxidant, anti-ageing, photoprotection, hair colour protection, antimicrobial, purifying, antiseptic, insect repellent, anti-cellulite and microcirculation properties.

Recommended usage level: 0.5 - 5%

## Blue Butterfly Pea Cellular Extract

(INCI: Clitoria ternatea Flower Extract)

Delivering “true to nature” hydrophilic plant profiles. Cellular Extraction harnesses the species’ water-soluble blueprint of phyto-compounds and their derivatives (the entourage), in their synergistic relationships, as they exist in the cell.

Extracted rapidly under high pressure, NATIVE EXTRACTS maintain the molecules’ natural integrity.

Committed to conscious manufacturing, Cellular Extracts are created using purified, deionised, rain-harvested water and less plant material than past processes to produce a natural True to Nature plant extract, that is water-wise, repurposes waste, traceable to source, transparent in composition.

Butterfly Pea Cellular Extract’s unique synergy between its compounds delivers a powerhouse of natural ingredients to consider for haircare, blemished skin conditions, premature ageing and more.

Recommended usage level: 0.5 – 1% concentrate; 1 – 5% dilution

## CALENDULA OIL

(INCI: Helianthus Annuus (Sunflower) Seed Oil, Calendula Officinalis Flower Extract, Tocopherol)

CALENDULA OIL (Tocopherol) is ideal for sensitive and/ or irritated skin. It provides antimicrobial, purifying, and antiseptic properties.

Recommended usage level: 0.5 - 5%

## Coleus Cellular Extract

(INCI: Coleus barbadus Root Extract)

Delivering “true to nature” hydrophilic plant profiles. Cellular Extraction harnesses the species’ water-soluble blueprint of phyto-compounds and their derivatives (the entourage), in their synergistic relationships, as they exist in the cell.

Extracted rapidly under high pressure, NATIVE EXTRACTS maintain the molecules’ natural integrity.

Committed to conscious manufacturing, Cellular Extracts are created using purified, deionised, rain-harvested water and less plant material than past processes to produce a natural True to Nature plant extract, that is water-wise, repurposes waste, traceable to source, transparent in composition.

Several compounds extracted from the root of Coleus forskohlii show potential to help visibly improve common skin issues around breakouts and sensitive skin.

Recommended usage level: 0.5 – 1% concentrate; 1 – 5% dilution

## Calybiota® Bio

(INCI: Glycerin, Water, Bombax Costatum Flower Extract)

Calybiota® Bio is an extract rich in polysaccharides of red Kapokier calyces, a tree sourced in Africa. Calybiota® Bio is COSMOS certified by Ecocert and is particularly recommended for personal care and intimate hygiene products.

A clinical study has demonstrated its protective role of the vaginal flora. This study revealed a prebiotic effect in this flora, showing a reduction in inflammation and feelings of discomfort, hydration of the intimate area and an improvement in sexual comfort.

Calybiota® Bio is also recommended for acne-prone, atopic/ eczematous or hypersensitive skin, as well as for deodorant formulas, limiting unpleasant odours. This active ingredient protects and maintains the balance of the skin microbiota.

Recommended usage level: 1 - 3%

## CYTOFRUIT® WATERS Bergamot

(INCI: Citrus Aurantium Bergamia Fruit Extract)

CYTOFRUIT® WATERS Bergamot is a Cosmos certifiable and circular economy fruit water from the production of Bergamot juice. The fruits are harvested in the Mediterranean.

Bergamot offers calming and antiseptic properties for irritated skin as well as cooling and refreshing benefits. Ideal for use in cleansers and toners to achieve clear and flawless skin.

Thanks to the presence of oligo-elements, this CYTOFRUIT® Water could sustain skin biological benefits through an improvement of cell vitality, a protection against external agents or a physiological improvement.

Recommended usage level: 1 - 100%



## CYTOFRUIT® WATERS Grapefruit

(INCI: Citrus Grandis Fruit Extract)

CYTOFRUIT® WATERS Grapefruit is a Cosmos certifiable and circular economy fruit water from the production of Grapefruit juice. The fruit is harvested in the Mediterranean and is rich in bioflavonoids.

Grapefruit provides detoxifying and antioxidant properties, whilst improving cell energy levels for anti-ageing benefits. Ideal for skin toning, anti-cellulite, detoxifying and oily skin.

Thanks to the presence of oligo-elements, this CYTOFRUIT® Water could sustain skin biological benefits through an improvement of cell vitality, a protection against external agents or a physiological improvement.

Recommended usage level: 1 - 100%

## Davidson Plum Cellular Extract

(INCI: Davidsonia Jerseyana Fruit Extract)

Delivering “true to nature” hydrophilic plant profiles. Cellular Extraction harnesses the species’ water-soluble blueprint of phyto-compounds and their derivatives (the entourage), in their synergistic relationships, as they exist in the cell. Extracted rapidly under high pressure, NATIVE EXTRACTS maintain the molecules’ natural integrity.

Committed to conscious manufacturing, Cellular Extracts are created using purified, deionised, rain-harvested water and less plant material than past processes to produce a natural True to Nature plant extract, that is water-wise, repurposes waste, traceable to source, transparent in composition.

The NE Davidson Plum Cellular Extract is packed with an exciting range of phyto-compounds including gallic acid, ellagic acid, quercetin, organic + amino acids, sugars, and anthocyanin which is responsible for its dark red colour. The synergism of these powerful compounds delivers exciting new possibilities for natural solutions to premature ageing, age lines, radiance and luminosity, acne prone skin, suppleness, inflammation and antioxidant applications in skincare. A

available as a concentrate and as a 10% dilution.

Recommended usage level: 0.5 – 1% concentrate; 1 – 5% dilution

## CYTOFRUIT® WATERS Lemon

(INCI: Citrus Limon Fruit Extract)

CYTOFRUIT® WATERS Lemon is a Cosmos certifiable and circular economy fruit water from the production of Lemon Juice. The Lemons, harvested in the Mediterranean are rich in Vitamin C, Potassium and Citric Acid.

Lemon fruits cleanse and exfoliate dull and oily skins, whilst refreshing and quenching the skin’s thirst to provide a radiant glow. In addition, Lemon fruit also offers natural anti-bacterial and astringent properties.

Thanks to the presence of oligo-elements, this CYTOFRUIT® Water could sustain skin biological benefits through an improvement of cell vitality, a protection against external agents or a physiological improvement.

Recommended usage level: 1 - 100%

## DefensoWin™

(INCI: Ectoin)

A powerful pure molecule from a specific selected bacterial strain from cutting edge bio-fermentation technology.

This probiotic works by balancing the skin microenvironment to help prevent acute environmental stress whilst providing superior moisturisation and improving skin barrier function. Ectoin possesses excellent anti-acne properties and is clinically tested to provide high skin cell protection against osmotic stress.

Recommended usage level: 0.5 - 2%

## Elderflower Cellular Extract

(INCI: Sambucus nigra Flower Extract)

Delivering “true to nature” hydrophilic plant profiles. Cellular Extraction harnesses the species’ water-soluble blueprint of phyto-compounds and their derivatives (the entourage), in their synergistic relationships, as they exist in the cell.

Extracted rapidly under high pressure, NATIVE EXTRACTS maintain the molecules’ natural integrity.

Committed to conscious manufacturing, Cellular Extracts are created using purified, deionised, rain-harvested water and less plant material than past processes to produce a natural True to Nature plant extract, that is water-wise, repurposes waste, traceable to source, transparent in composition.

Elderflower Cellular Extract is recommended in antioxidant and blemish-prone skin formulas due to its composition rich in phyto-compounds.

Recommended usage level: 0.5 – 1% concentrate; 1 – 5% dilution

## Emu Apple Cellular Extract

(INCI: Kunzea Pomifera Fruit Extract)

Delivering “true to nature” hydrophilic plant profiles. Cellular Extraction harnesses the species’ water-soluble blueprint of phyto-compounds and their derivatives (the entourage), in their synergistic relationships, as they exist in the cell. Extracted rapidly under high pressure, NATIVE EXTRACTS maintain the molecules’ natural integrity.

Committed to conscious manufacturing, Cellular Extracts are created using purified, deionised, rain-harvested water and less plant material than past processes to produce a natural True to Nature plant extract, that is water-wise, repurposes waste, traceable to source, transparent in composition. A true global player in brightening, anti-acne & anti-inflammatory.

Extensive peer reviewed research identifies (by compound) what the extract profile may be considered for, this untapped little fruit could be the next big premature ageing phyto-nutrient powerhouse for moisturising ageing skin and inflammation.

Recommended usage level: 0.5 – 1% concentrate; 1 – 5% dilution.

## Emu Bush Cellular Extract

(INCI: Eremophila Longifolia Leaf Extract)

Delivering “true to nature” hydrophilic plant profiles. Cellular Extraction harnesses the species’ water-soluble blueprint of phyto-compounds and their derivatives (the entourage), in their synergistic relationships, as they exist in the cell. Extracted rapidly under high pressure, NATIVE EXTRACTS maintain the molecules’ natural integrity.

Committed to conscious manufacturing, Cellular Extracts are created using purified, deionised, rain-harvested water and less plant material than past processes to produce a natural True to Nature plant extract, that is water-wise, repurposes waste, traceable to source, transparent in composition.

NE Emu Bush is a unique Australian pioneer species that has evolved over centuries to create powerful mechanisms to store vast quantities of phyto-compounds needed to survive the extreme conditions of the Australian Desert. Records show its leaves were used by Aboriginal tribes to wash sores and cuts.

The NE Emu Bush Cellular Extract delivers natural molecules in a water-soluble format, including chlorogenic acid (CGA), ferulic acid, isorhamnetin, quercetin, verbascoside and more. Ideal for acne blemishes, soothing skin, signs of ageing and after sun care. Available as a concentrate and as a 10% dilution.

Recommended usage level: 0.5 – 1% concentrate; 1 – 5% dilution

## EVERLASTING - ECO

(INCI: Glycerin, Aqua, Helichrysum Stoechas Flower Extract, Potassium Sorbate, Sodium Benzoate)

EVERLASTING - ECO provides a good source of polyphenols to protect against the harmful effects of free radicals.

Recommended usage level: 0.1 – 3%

## Evicare® magnolia

(INCI: Magnolia Officinalis Bark Extract)

Evicare® magnolia displays a high antimicrobial activity at low concentrations against a number of different micro-organisms, be it gram-positive or gram-negative bacteria, yeasts or moulds. Thus, the material can be used as a general antimicrobial booster in your formulation at low concentration.

This oil soluble and pH independent active can not only be used as an effective ingredient against skin pathogens such as, the organisms responsible for acne, athlete's foot, dermatosis, oral bacterial etc., it can also be used as an antimicrobial in anhydrous systems such as, lipsticks, lip balms, bath oils etc. Due to the faint and pleasant herbal odour, mild taste and light colour, no unwanted olfactory characteristics will be imparted on the formulation.

In addition to these antimicrobial benefits, Evicare® magnolia also possesses an antioxidative property due to the phenolic structure of the two actives magnolol and honokiol.

Recommended usage level: 0.05% as an active in anti-acne or oral application; 0.2% - 0.3% as an anti-microbial booster

## EXFO-OLIVE BODY

(INCI: Olea Europaea (Olive) Seed Powder)

EXFO-OLIVE BODY is produced from the pits of olive fruits (*Olea europae*), which are milled to obtain two cosmetic active compounds: one with particle size 200 µm and the other with particle size 500 µm.

It is a natural and physical exfoliant using upcycled olive stones with granules specifically sized for the body. It removes dead surface cells through a mechanical action that improves the texture of the skin, the natural regeneration of the epidermis and the penetration of cosmetic active ingredients.

Recommended usage level: 5-10%

## Evicare® wintergreen

(INCI: Salicylic Acid)

Evicare® wintergreen is a natural antimicrobial active and preservative. Salicylic acid is well known in the industry and used as a preservative but even more as an active with specific function as anti-dandruff agent, anti-acne active and for its keratinolytic effect.

Evicare® wintergreen is 100% natural and sourced sustainably from the wintergreen shrub as a by-product from aroma sourcing. It is moderately water soluble and can simply be added to the water phase. It is often used in anti-acne and anti-dandruff products as a main active.

Recommended usage level: 0.5 - 2.5%

## EXFO-OLIVE FACE

(INCI: Olea Europaea (Olive) Seed Powder)

EXFO-OLIVE FACE is produced from the pits of olive fruits (*Olea europae*), which are milled to obtain two cosmetic active compounds: one with particle size 200 µm and the other with particle size 500 µm.

It is a natural and physical exfoliant using upcycled olive stones with granules specifically sized for the face. It removes dead surface cells through a mechanical action that improves the texture of the skin, the natural regeneration of the epidermis and the penetration of cosmetic active ingredients.

Recommended usage level: 5 - 10%

## EXO FDS Azelaic Fusion

(INCI: Aqua, Propanediol, Glycerin, Phosphatidylcholine, Mannitol, Azelaic Acid, Potassium Sorbate, Ethylhexylglycerin, Beta-Sitosterol, Sorbitan Oleate, Chamomilla Recutita Extract, Salvia Officinalis Leaf Extract, Tropaeolum Majus Extract, Arctium Lappa Root Extract, Cetrimonium Chloride, Phytosphingosine)

Exosomes are natural lipid vesicles that facilitate cell communication and modulate physiological processes, mimicking intercellular communication. Biomimetic Exosomes combine ancient plant extracts rich in biocompounds with cutting-edge delivery technology. Follicular Delivery bioexosomes transport active ingredients into the hair follicle.

Plant extracts, along with azelaic acid, offer a comprehensive solution for acne-prone skin. Azelaic acid regulates cell turnover, reducing acne formation and inflammation. Chamomile soothes irritation, sage calms swelling, and nasturtium stimulates collagen production for skin repair. Burdock detoxifies, aiding acne clearance.

Together, these ingredients create a holistic approach to clearer, healthier skin. The delivery system protects the extracts from degradation caused by pH or interaction whilst delivering the active ingredient to the interior of the hair follicle, optimising its access to the sebaceous gland.

EXO FDS Azelaic Fusion regulates cell turnover reducing acne and inflammation, soothes irritation and redness, provides anti-inflammatory properties to calm swelling associated with acne breakouts, stimulates collagen production for skin repair, acts as a detoxifying agent, and protects the skin against free radicals and environmental damage.

Recommended usage level: 1-10%

## Finger Lime Caviar Cellular Extract

(INCI: Citrus Australasica Fruit Extract)

Delivering “true to nature” hydrophilic plant profiles. Cellular Extraction harnesses the species’ water-soluble blueprint of phyto-compounds and their derivatives (the entourage), in their synergistic relationships, as they exist in the cell. Extracted rapidly under high pressure, NATIVE EXTRACTS maintain the molecules’ natural integrity.

Committed to conscious manufacturing, Cellular Extracts are created using purified, deionised, rain-harvested water and less plant material than past processes to produce a natural True to Nature plant extract, that is water-wise, repurposes waste, traceable to source, transparent in composition.

The NE Finger Lime Caviar Cellular Extract delivers the natural molecules this botanical species can offer in a water-soluble format, including limocitrin, tryptophan, flavone-C-glycoside, flavonoid glycosides, organic acids, amino acids and phenolics, to power your products naturally. These exotic “finger shaped” fruits are bursting with tiny pearls or caviar, loaded with exciting water-soluble phyto-compounds making it an ideal choice for barrier function, hydration, reactive skin conditions, blemished skin and wound healing.

Available as a concentrate or as a 10% dilution.

Recommended usage level: 0.5 – 1% concentrate; 1 – 5% dilution

## Flame Tree Cellular Extract

(INCI: Brachychiton Acerifolius Flower Extract)

Delivering “true to nature” hydrophilic plant profiles. Cellular Extraction harnesses the species’ water-soluble blueprint of phyto-compounds and their derivatives (the entourage), in their synergistic relationships, as they exist in the cell. Extracted rapidly under high pressure, NATIVE EXTRACTS maintain the molecules’ natural integrity.

Committed to conscious manufacturing, Cellular Extracts are created using purified, deionised, rain-harvested water and less plant material than past processes to produce a natural True to Nature plant extract, that is water-wise, repurposes waste, traceable to source, transparent in composition.

Flame Tree is famous for its bright red bell-shaped flowers with 5 fused petals that cover the tree when it is leafless. It reduces redness, repairs skin and under eye and supports vitamin C.

Recommended usage level: 0.5 – 1% concentrate; 1 – 5% dilution.

## Ginger Cellular Extract

(INCI: Zingibar officinalis Root Extract; Zingibar officinale (Ginger) Root Extract)

Delivering “true to nature” hydrophilic plant profiles. Cellular Extraction harnesses the species’ water-soluble blueprint of phyto-compounds and their derivatives (the entourage), in their synergistic relationships, as they exist in the cell.

Extracted rapidly under high pressure, NATIVE EXTRACTS maintain the molecules’ natural integrity.

Committed to conscious manufacturing, Cellular Extracts are created using purified, deionised, rain-harvested water and less plant material than past processes to produce a natural True to Nature plant extract, that is water-wise, repurposes waste, traceable to source, transparent in composition.

Ginger is loaded with nutrients and the NE Ginger Cellular Extract’s phyto-compound gingerol is known for its powerful anti-inflammatory and antioxidant effects.

Considered this powerful compound for blemishes, reactive skin, age lines, premature aging, inflammation, hair maintenance and protection and more.

Recommended usage level: 0.5 – 1% concentrate; 1 – 5% dilution



## Ginseng (Siberian) Cellular Extract

(INCI: Eleutherococcus senticosus Root Extract;  
Acanthopanax Senticosus Root Extract)

Delivering “true to nature” hydrophilic plant profiles. Cellular Extraction harnesses the species’ water-soluble blueprint of phyto-compounds and their derivatives (the entourage), in their synergistic relationships, as they exist in the cell.

Extracted rapidly under high pressure, NATIVE EXTRACTS maintain the molecules’ natural integrity.

Committed to conscious manufacturing, Cellular Extracts are created using purified, deionised, rain-harvested water and less plant material than past processes to produce a natural True to Nature plant extract, that is water-wise, repurposes waste, traceable to source, transparent in composition.

Ginseng can be used in skincare products to treat skin inflammation, acne, dandruff, and hair loss.

Recommended usage level: 0.5 – 1% concentrate; 1 – 5% dilution

## GRAPEFRUIT EXTRACT H.GL. - M.S

(INCI: Glycerin, Aqua, Citrus Grandis (Grapefruit) Fruit Extract, Sodium Benzoate, Potassium Sorbate)

GRAPEFRUIT EXTRACT H.GL. - M.S. is a water-soluble extract that providing collagen synthesis stimulation, anti-ageing, moisturisation, purifying and antimicrobial properties. Hairstyle fixation and conditioning.

Recommended usage level: 0.5 – 5%

## Green Clay - Illite

(INCI: Illite)

Green Clay is recommended for products used to treat greasy hair and oily, acne-prone skin. Provides antiseptic, purifying, remineralising and sebo-regulating activities. Can also provide natural colour to cosmetic products.

Recommended usage level: 1 - 40%

## Green Tea Cellular Extract

(INCI: Camellia sinensis Leaf Extract)

Delivering “true to nature” hydrophilic plant profiles. Cellular Extraction harnesses the species’ water-soluble blueprint of phyto-compounds and their derivatives (the entourage), in their synergistic relationships, as they exist in the cell.

Extracted rapidly under high pressure, NATIVE EXTRACTS maintain the molecules’ natural integrity.

Committed to conscious manufacturing, Cellular Extracts are created using purified, deionised, rain-harvested water and less plant material than past processes to produce a natural True to Nature plant extract, that is water-wise, repurposes waste, traceable to source, transparent in composition.

Green tea is rich in antioxidants, particularly catechins, which help protect the skin from damage caused by free radicals, reducing signs of aging. It also has anti-inflammatory properties that soothe irritated skin and can help reduce redness and acne breakouts.

Recommended usage level: 0.5 – 1% concentrate; 1 – 5% dilution

## GUARANA EXTRACT GDBN

(INCI: Aqua, Glycerin, Paullinia Cupana Fruit Extract, Sodium Benzoate, Potassium Sorbate)

GUARANA EXTRACT GDBN is a water-soluble extract that acts on the adipose tissue.

Stimulates blood circulation, provides an anti-cellulite effect as well as regulating sebum. Wounds healing and astringent properties.

Recommended usage level: 0.5 – 5%

## Hemp Seed Oil

(INCI: Cannabis sativa Seed Oil)

Balances skin's sebum production to reduce the shine and prevent breakouts.

An effective moisturiser and protectant for skin, increasing the elasticity and bringing new life to dry, tired or dehydrated skin.

Recommended usage level: 1-10%

## Hawthorn Berries Cellular Extract

(INCI: Crataegus monogyna Fruit Extract)

Delivering “true to nature” hydrophilic plant profiles. Cellular Extraction harnesses the species’ water-soluble blueprint of phyto-compounds and their derivatives (the entourage), in their synergistic relationships, as they exist in the cell.

Extracted rapidly under high pressure, NATIVE EXTRACTS maintain the molecules’ natural integrity.

Committed to conscious manufacturing, Cellular Extracts are created using purified, deionised, rain-harvested water and less plant material than past processes to produce a natural True to Nature plant extract, that is water-wise, repurposes waste, traceable to source, transparent in composition.

Hawthorn berries are packed with antioxidants that help protect the skin from environmental damage and promote a youthful complexion. They also have anti-inflammatory and antimicrobial properties, which can help calm irritated skin and reduce acne-related inflammation.

Recommended usage level: 0.5 – 1% concentrate; 1 – 5% dilution

## HIBISCUS - ECO

(INCI: Glycerin, Aqua, Hibiscus Sabdariffa Flower Extract, Potassium Sorbate, Sodium Benzoate)

HIBISCUS – ECO is a standardised extract in a medium of Glycerin/ water from the flowers of "Hibiscus sabdariffa L.", proceeding from organic crop. It contains a minimum 1.5% of Anthocyanosides.

HIBISCUS – ECO largely inhibits elastin degradation, which results in beneficial effects on skin such as the maintenance of elasticity and its consequent anti-ageing effects, and a clear recovery of inflammatory processes involving this enzyme.

It can be used in skin care vitalising and rejuvenating treatments, special products to maintain skin tone and elasticity, anti-acne preparations and after-shave products. It can also be used in re-firming and anti-cellulite products and hair conditioners and colour enhancing products.

Recommended usage level: 0.1-4%

## Holy Basil Cellular Extract

(INCI: Ocimum sanctum Extract)

Delivering “true to nature” hydrophilic plant profiles. Cellular Extraction harnesses the species’ water-soluble blueprint of phyto-compounds and their derivatives (the entourage), in their synergistic relationships, as they exist in the cell.

Extracted rapidly under high pressure, NATIVE EXTRACTS maintain the molecules’ natural integrity.

Committed to conscious manufacturing, Cellular Extracts are created using purified, deionised, rain-harvested water and less plant material than past processes to produce a natural True to Nature plant extract, that is water-wise, repurposes waste, traceable to source, transparent in composition.

Holy Basil, also known as tulsi, has powerful antioxidant and anti-inflammatory properties that help protect the skin from premature aging and environmental stressors. It also aids in balancing oily skin and reducing acne by preventing bacterial growth and soothing irritation.

Recommended usage level: 0.5 – 1% concentrate; 1 – 5% dilution

## HYDROMANIL™ H.GL. - M.S

(INCI: Aqua, Glycerin, Hydrolyzed Caesalpinia Spinosa Gum, Caesalpinia Spinosa Gum, Sodium Benzoate, Potassium Sorbate)

Provital’s iconic moisturiser, now with an additional antibacterial protective effect.

Exclusive 3D Matrix technology for immediate and long-lasting hydration, even after rinsing/cleansing. Provides film-forming effect that prevents transepidermal water loss, desquamation and cracking. Inhibits the formation of bacterial biofilm.

Recommended usage level: 2-10%

## Honeysuckle Cellular Extract

(INCI: Lonicera Japonica Flower Extract)

Delivering “true to nature” hydrophilic plant profiles. Cellular Extraction harnesses the species’ water-soluble blueprint of phyto-compounds and their derivatives (the entourage), in their synergistic relationships, as they exist in the cell.

Extracted rapidly under high pressure, NATIVE EXTRACTS maintain the molecules’ natural integrity.

Committed to conscious manufacturing, Cellular Extracts are created using purified, deionised, rain-harvested water and less plant material than past processes to produce a natural True to Nature plant extract, that is water-wise, repurposes waste, traceable to source, transparent in composition.

Honeysuckle has natural anti-inflammatory and antibacterial properties, making it effective in soothing irritated skin and reducing breakouts. It also helps to hydrate and brighten the skin, promoting a healthier, more even complexion.

Recommended usage level: 0.5 – 1% concentrate; 1 – 5% dilution

## JADE ALGA™

(INCI: Aqua, Hydrolyzed Ulva Lactuca Extract)

JADE ALGA™ is a patented active ingredient composed of native ulvans coming from the green seaweed *Ulva Armoricana*. It is the only alga with “Shape Memory Technology”, allowing it to challenge the repeat cell deformations (contraction/expansion) induced by the tides. Jade Alga restores an optimal skin shape memory through the stimulation of Involucrin and Cornifin as well as its protective effect against the over production of Heme Oxygenase induced by pollutants. It also provides a soft enzymatic and chemical peeling (BHA) for skin radiance. A clinical study showed the reduction of intercellular spaces and the improvement of cellular cohesion, skin softness and satin effect.

Recommended usage level: 1-3%

## Kaffir Lime Cellular Extract

(INCI: Citrus hystrix, ext.)

Delivering “true to nature” hydrophilic plant profiles. Cellular Extraction harnesses the species’ water-soluble blueprint of phyto-compounds and their derivatives (the entourage), in their synergistic relationships, as they exist in the cell.

Extracted rapidly under high pressure, NATIVE EXTRACTS maintain the molecules’ natural integrity.

Committed to conscious manufacturing, Cellular Extracts are created using purified, deionised, rain-harvested water and less plant material than past processes to produce a natural True to Nature plant extract, that is water-wise, repurposes waste, traceable to source, transparent in composition.

Kaffir lime extract is rich in vitamin C and antioxidants, helping to brighten the skin and reduce the appearance of dark spots. Its natural astringent properties also help tighten the skin, control excess oil, and improve overall skin texture.

Recommended usage level: 0.5 – 1% concentrate; 1 – 5% dilution

## Kangaroo Apple Cellular Extract

(INCI: Solanum Aviculare Fruit Extract)

Delivering “true to nature” hydrophilic plant profiles. Cellular Extraction harnesses the species’ water-soluble blueprint of phyto-compounds and their derivatives (the entourage), in their synergistic relationships, as they exist in the cell. Extracted rapidly under high pressure, NATIVE EXTRACTS maintain the molecules’ natural integrity.

Committed to conscious manufacturing, Cellular Extracts are created using purified, deionised, rain-harvested water and less plant material than past processes to produce a natural True to Nature plant extract, that is water-wise, repurposes waste, traceable to source, transparent in composition. The fruit has been used as an anti-inflammatory poultice on swollen joints.

Extensive peer reviewed research identifies the extract’s compounds potential use for inflammation, blemishes and reactive/atopic skin conditions.

Recommended usage level: 0.5 – 1% concentrate; 1 – 5% dilution.

## Kahai Oil

(INCI: Caryodendron orinocense nut oil)

100% natural anti-ageing oil, extracted by cold pressing the nuts of the Cacay tree. It has a high penetration capability, a dry skin feel and a mild nutty scent, which fades quickly.

Its high content of natural Vitamin E, F and Retinol nourishes, softens and repairs damaged skin making it an ideal choice for scar treatments, tattoo care, stretch marks and aftershave creams.

Kahai Oil revitalises the skins radiance, reduces fine lines and wrinkles, minimises dark spots and provides long lasting hydration. Kahai Oil contains 50% more Vitamin E and twice the amount of Linoleic Acid than Argan oil and it has 3 times more Retinol than Rose Hip Oil. When used on nails it strengthens brittle nails and relieves nail psoriasis. On hair it provides thermal protection, repairs split ends, increases gloss and reduces frizz at high humidity, out performing Argan oil (tested at 5%).

Recommended usage level: Various

## Lemon Scented Tea Tree Cellular Extract

(INCI: Leptospermum Petersonii Leaf Extract)

Delivering “true to nature” hydrophilic plant profiles. Cellular Extraction harnesses the species’ water-soluble blueprint of phyto-compounds and their derivatives (the entourage), in their synergistic relationships, as they exist in the cell. Extracted rapidly under high pressure, NATIVE EXTRACTS maintain the molecules’ natural integrity.

Committed to conscious manufacturing, Cellular Extracts are created using purified, deionised, rain-harvested water and less plant material than past processes to produce a natural True to Nature plant extract, that is water-wise, repurposes waste, traceable to source, transparent in composition.

It smells like a lemon rainforest and has a beautiful eucalyptus and lemon aroma. Used in Aboriginal Australian tribes for generations to boost immunity, the leaves are gathered from the wild for use as a medicine. A natural anti-bacterial perfect for blemish prone skin.

Recommended usage level: 0.5 – 1% concentrate; 1 – 5% dilution

## Linden Flower Cellular Extract

(INCI: Tilia cordata Flower Extract)

Delivering “true to nature” hydrophilic plant profiles. Cellular Extraction harnesses the species’ water-soluble blueprint of phyto-compounds and their derivatives (the entourage), in their synergistic relationships, as they exist in the cell.

Extracted rapidly under high pressure, NATIVE EXTRACTS maintain the molecules’ natural integrity.

Committed to conscious manufacturing, Cellular Extracts are created using purified, deionised, rain-harvested water and less plant material than past processes to produce a natural True to Nature plant extract, that is water-wise, repurposes waste, traceable to source, transparent in composition.

Linden flower extract is known for its calming and anti-inflammatory properties, making it ideal for soothing sensitive or irritated skin. It also hydrates and protects the skin, helping to improve elasticity and promote a healthy, radiant complexion.

Recommended usage level: 0.5 – 1% concentrate; 1 – 5% dilution

## Manuka Essential Oil

(INCI: Leptospermum scoparium)

Manuka Essential Oil is manufactured by steam distilling oil from leaves and branches of the manuka bush. Three main manuka oil chemical identities (chemotypes) are based on triketone, pinene and sesquiterpene content. The antimicrobial potential of manuka oil is determined mainly by  $\beta$ -triketone content.

Able to be formulated into highly effective skincare products with good skin-feel using low concentrations of manuka oil. Anti-bacterial, antiviral, anti-fungal, anti-inflammatory, antioxidant, anti-ageing, wound healing and synergistic properties.

Used topically and is 1,000 times more powerful than manuka honey against bacteria that cause common skin infections.

Recommended usage level: Skincare and acne: 0.5 – 1%; Dermatological therapeutics: 1 - 2%; Personal care, oral care, sanitisation products: 0.2 - 1%; Aromatherapy: 2 - 5 drops, alone or with other oils.

## Macadamia Oil

(INCI: Macadamia intergrifolia Seed Oil)

Pure cold pressed with the lowest peroxide value at <1.0. It quickly absorbs and therefore can be considered for treating problematic skin conditions. It is low comedogenic, helping skin balance oil production. Widely tolerated by all skin types.

Packed with nutrients such as mono-unsaturated fatty acids, omega 3 and omega 6 fatty acids providing a softening and hydrating effect to the skin. The oil’s regenerative effects help chapped skin recover and thanks to omega 7, Macadamia Oil can also help to heal sunburn, scratched, and sore skin.

Its phytosterol content helps to soothe itchy areas and discomfort, making a bottle of macadamia oil a trusty friend to keep in your natural wellbeing kit.

Recommended usage level: 1-10%

## MERISTEM

(INCI: Aqua, Quercus Robur Root Extract)

Meristem is a water extracted botanical ingredient sourced from Oak tree root growth tissue (Meristem). Plant Meristem cells are rich in substances physiologically active to support and protect cell growth, especially Phenylpropanoids which play a very important role in defending the plant against external stresses.

In vitro studies have shown that the material modulates the agonist of the TRPV3 pain receptor (nociceptive) system by more than 50% in 24h. In the skin this results in a lenitive and soothing behaviour.

Recommended usage level: 0.5 - 2.0



## Mountain Pepper Leaf Cellular Extract

(INCI: Tasmannia lanceolata Leaf Extract)

Delivering “true to nature” hydrophilic plant profiles. Cellular Extraction harnesses the species’ water-soluble blueprint of phyto-compounds and their derivatives (the entourage), in their synergistic relationships, as they exist in the cell. Extracted rapidly under high pressure, NATIVE EXTRACTS maintain the molecules’ natural integrity.

Committed to conscious manufacturing, Cellular Extracts are created using purified, deionised, rain-harvested water and less plant material than past processes to produce a natural True to Nature plant extract, that is water-wise, repurposes waste, traceable to source, transparent in composition.

Specially designed for sensitive skin to protect and reduce skin sensibility. Perfect for post-shave and sunburn brief’s.

Recommended usage level: 0.5 – 1% concentrate; 1 – 5% dilution

## Native Bush Mint Cellular Extract

(INCI: Prostanthera rotundifolia Leaf Extract)

Delivering “true to nature” hydrophilic plant profiles. Cellular Extraction harnesses the species’ water-soluble blueprint of phyto-compounds and their derivatives (the entourage), in their synergistic relationships, as they exist in the cell. Extracted rapidly under high pressure, NATIVE EXTRACTS maintain the molecules’ natural integrity.

Committed to conscious manufacturing, Cellular Extracts are created using purified, deionised, rain-harvested water and less plant material than past processes to produce a natural True to Nature plant extract, that is water-wise, repurposes waste, traceable to source, transparent in composition.

Protecting skin from the inside, out with its natural antioxidant capabilities.

Recommended usage level: 0.5 – 1% concentrate; 1 – 5% dilution

## Natalc

(INCI: Cellulose acetate, Tapioca starch)

Natalc is a plant alternative to talc, with the same hydrophobicity properties.

It is ideal to protect the skin against moisture and is a perfect natural plant ingredient to formulate baby powder.

Made from a manioc extract powder with cellulose acetate powder, it offers protective properties thanks to the hydrophobicity of the material.

Recommended for oily and acne prone skin care products, make-up, dry shampoo, baby powder, footcare, make-up and more.

Thanks to its absorbent assets and its extreme softness, Natalc provides a soft touch to formulations and can be used alone or in combination with other powders. Cold process.

Recommended usage level: 2-5%

## Native Juniper Cellular Extract

(INCI: Myoporum Insulare Extract)

Delivering “true to nature” hydrophilic plant profiles. Cellular Extraction harnesses the species’ water-soluble blueprint of phyto-compounds and their derivatives (the entourage), in their synergistic relationships, as they exist in the cell. Extracted rapidly under high pressure, NATIVE EXTRACTS maintain the molecules’ natural integrity.

Committed to conscious manufacturing, Cellular Extracts are created using purified, deionised, rain-harvested water and less plant material than past processes to produce a natural True to Nature plant extract, that is water-wise, repurposes waste, traceable to source, transparent in composition.

It produces sweet astringent purple berries. A key ingredient in treatments for acne, oily skin, and dandruff, helping to balance sebum production.

Recommended usage level: 0.5 – 1% concentrate; 1 – 5% dilution

## Native River Mint Cellular Extract

(INCI: Mentha australis Leaf Extract)

Delivering “true to nature” hydrophilic plant profiles. Cellular Extraction harnesses the species’ water-soluble blueprint of phyto-compounds and their derivatives (the entourage), in their synergistic relationships, as they exist in the cell. Extracted rapidly under high pressure, NATIVE EXTRACTS maintain the molecules’ natural integrity.

Committed to conscious manufacturing, Cellular Extracts are created using purified, deionised, rain-harvested water and less plant material than past processes to produce a natural True to Nature plant extract, that is water-wise, repurposes waste, traceable to source, transparent in composition.

The NE Native River Mint Cellular Extract delivers all the natural molecules this botanical species can offer in a water-soluble format, including amino and organic acids, phenolics, flavonoid glycosides, rosmarinic acid, terpenoids and methoxy flavonoids to power your products naturally. While native to all states, NATIVE EXTRACTS source their Native River Mint from the South Australia Riverlands region grown by their Indigenous Grower, Dominic Smith (Pundi Produce) using a water efficient aquaponics process.

There is a unique synergy between the phyto compounds in the NE Native River Mint Cellular Extract that make this Australian Botanical a unique plant profile, with a standout phyto-compound, rosmarinic acid, which is well-known for its anti-inflammatory, UV protection, anti-wrinkle, anti-scarring and anti-microbial properties.

Recommended usage level: 0.5 – 1% concentrate; 1 – 5% dilution

## Native Sandalwood Seed Oil

(INCI: Fusanus spicatus Kernel Seed Oil)

Rich in Omega 3, 6, 9, and Xymenynic acid it is ideal for finished products targeting skin tone, blemish prone skin, age lines, and hydration. The perfect ingredient to balance both mood & skin. Used for centuries to enhance feelings of calm & relaxation, Native Sandalwood Seed Oil smooths the skin, providing a firmer and more youthful look.

Recommended usage level: 1-10%

## Native Seaweed Tasmanian Kelp Extract

(INCI: Durvillea Potatorum Extract)

Collected by Kelp harvesters from clean, unpolluted waters from the shores of King Island, Tasmania. Ethically sourced, it is only harvested from the shores after storms have torn it from the rocks and cast onto the beaches.

Consider these powerful phyto-compounds in supporting radiance and luminosity, hair products, premature ageing, anti-glycation, collagen and elastin support and blemished and reactive skin possibilities.

Recommended usage level: 1 – 2% concentrate; 3 – 6% dilution.

## Native Snowflower Cellular Extract

(INCI: Melaluca Alternifolia Leaf Extract)

Delivering “true to nature” hydrophilic plant profiles. Cellular Extraction harnesses the species’ water-soluble blueprint of phyto-compounds and their derivatives (the entourage), in their synergistic relationships, as they exist in the cell. Extracted rapidly under high pressure, NATIVE EXTRACTS maintain the molecules’ natural integrity.

Committed to conscious manufacturing, Cellular Extracts are created using purified, deionised, rain-harvested water and less plant material than past processes to produce a natural True to Nature plant extract, that is water-wise, repurposes waste, traceable to source, transparent in composition.

Snowflower, otherwise known as Tea Tree, is sourced from the mother plants on a pristine organic land inland Northern Rivers region. A common household remedy with a long history of medicinal uses. Today, this species is valued for its antimicrobial properties, and the NE Snowflower Cellular Extract delivers compounds, including protocatechuic acid, phenolics, flavonoid glycosides, quercetin, kaempferol and more, that are beneficial for numerous hair and skin applications.

Recommended usage level: 0.5 – 1% concentrate; 1 – 5% dilution

## OAT MILK M.S

(INCI: Aqua, Glycerin, Avena Sativa (Oat) Kernel Extract, PEG-60 Hydrogenated Castor Oil, Helianthus Annuus (Sunflower) Seed Oil, Tocopherol, Potassium Sorbate, Sodium Benzoate)

OAT MILK M.S is an extract of Avena sativa seeds, which contains oat lipids, proteins and carbohydrates as an emulsion. It also contains minerals and vitamins.

Oat  $\beta$ -glucan is structurally similar to hyaluronic acid, which is extensively used to produce high-viscosity preparations and as a skin moisturising and smoothing agent. Skin and hair conditioning, hair and skin repair and as an antifungal are the suggested applications for Oat Extract.

External applications of oat seeds have a helpful emollient effect in cases of skin irritation, seborrhea and different types of pruritus. Oat mucilage is used in creams to treat sun-induced erythema. Oat flour has long been used in cosmetics as an ingredient of face masks and as an additive of soaps to relieve irritation and itching.

Recommended usage level: 0.5 – 5%

## ORANGE BLOSSOM RAIN

(INCI: Citrus Aurantium Amara (Bitter Orange) Flower Water, Gluconolactone, Sodium Benzoate, Calcium Gluconate)

ORANGE BLOSSOM RAIN is a distillate providing antimicrobial, antiseptic, tonifying, purifying and anti-cellulite properties.

Recommended usage level: 5 – 25%

## ONION EXTRACT GNB

(INCI: Glycerin, Aqua, Allium Cepa (Onion) Bulb Extract, Sodium Benzoate, Potassium Sorbate)

ONION EXTRACT GNB is a water-soluble extract for hair growth stimulation. It also provides antimicrobial, purifying, antiseptic, anti-inflammatory, anti-irritation, antioxidant, healing, anti-ageing, photoprotection and hair colour protection.

Recommended usage level: 0.5 – 5%

## Organic CBD Oil

(INCI: Cannabis sativa seed oil, Cannabidiol)

ORGANIC CBD OIL is a hemp extract obtained by extraction of Organic hemp's stems (Cannabis sativa) in a base of Organic Hemp seed oil. CBD OIL contains 1% CBD composition without any THC content.

It is a unique process which extracts the CBD from the stems and seeds to respond positively to regulatory constraints. CBD is known to reduce redness and soothe the skin. It is also known for its sebostatic, anti-acne and non-comedogenic properties.

Recommended usage level: 1 - 10%

## Organic Deodorised Argan Oil

(INCI: Argania Spinosa Kernel Oil)

Organic Deodorised Argan Oil is a rich oil containing high levels of fatty acids, Tocopherols and Sterols to reinforce skin barrier function of skin and scalp, restore shine to hair and strengthen nails. Also demonstrated to help maintain elasticity of postmenopausal skin and regulate skin sebum production. Ideal for skincare, bodycare and haircare.

Recommended usage level: 1-10%

## Organic Virgin Pomegranate Oil

(INCI: Punica Granatum Seed Oil)

Organic Virgin Pomegranate Oil contains 60% alpha-punicic acid, known for its calming and healing properties as well as vitamins E and F, to restore skin barrier and protect skin against UV and pollution. Ideal for atopic and mature skin, the eye contour, aftersun, after shave and after-depilatory products and products for dry hair.

Recommended usage level: 1-10%

## PARSLEY EXTRACT H.GL. - M.S

(INCI: Glycerin, Aqua, Carum Petroselinum (Parsley) Extract, Sodium Benzoate, Potassium Sorbate)

PARSLEY EXTRACT H.GL. - M.S. is a water-soluble extract. Anti-ageing. Antioxidant. Free radical scavenger. Protection of skin and hair integrity against oxidative processes. Photoprotection. Antimicrobial. Purifying. Antiseptic.

Recommended usage level: 0.5 – 5%

## Organic Virgin Jojoba Oil

(INCI: Simmondsia Chinensis Seed Oil)

Organic Virgin Jojoba Oil is a liquid wax ester rich in unsaponifiables and oleic acid to help moisturise, calm and regenerate the skin, as well as having sebum regulating properties. Ideal for any skin type from oily to dry, mature or sensitive.

Recommended usage level: 1-10%

## P-Alumina150

(INCI: Alumina (or Synthetic Sapphire))

Provides soft focus and coverage for flawless skin.

P-Alumina 150 covers even the tiniest pores, wrinkles and blemishes making it ideal for powders, eyeshadow, foundation and lipstick.

Recommended usage level: 1 - 10%

## PEARL ALGA™

(INCI: Propanediol, Aqua, Sargassum Muticum Extract)

PEARL ALGA™ is an enriched fraction of metabolites and phlorotannins coming from the brown seaweed, Sargassum muticum.

This unique and beautiful alga is composed of millions of micro-pearls. Its originality comes from the production of these specific substances with astringent, antibacterial and antifungal properties to protect from biofouling. Ageing and photo-ageing weaken collagen that supports pores and keeps them tight resulting in an increase of pore size.

Pore enlargement also induce pollutant penetration and over secretion of sebum leading to acne, irritating effects, pimples and zits. PEARL ALGA™ counteracts these effects by shrinking the size of pores, decreasing the pores numbers, firming up the connect tissue around the pores and refining skin grain. It finally reduces the greasy shiny aspect of the skin.

Recommended usage level: 1-3%

## PHYTOSERENE

(INCI: Phytosterols)

PhytoSerene is an pure beta-sitosterol; a natural micro-nutrient plant lipid found in the cells and membranes of the Pine tree. Chemically, the material is very similar to cholesterol.

This plant sterol is different in its biological function and because humans do not synthesise sterols in the body, it is necessary to replace daily losses.

Phytoserene demonstrates the capacity to reduce skin redness after exposure to a chemical agent and to diminish TEWL by forming a protective barrier on the skin.

Recommended usage level: 0.5 - 2.5

## PINK GRAPEFRUIT EXTRACT H.GL.PV. - SCONS

(INCI: Glycerin, Propanediol, Aqua, Citrus Paradisi (Grapefruit) Fruit Extract)

PINK GRAPEFRUIT EXTRACT H.GL.PV. - SCONS is a water-soluble extract. Anti-ageing. Antioxidant. Hair colour protection. Photoprotection. Moisturising. Refreshing. Smoothing. Hair conditioning. Antiseptic. Antimicrobial. Purifying.

Recommended usage level: 0.5 – 5%

## PINEAPPLE EXTRACT H.GL. - M.S

(INCI: Glycerin, Aqua, Ananas Sativus (Pineapple) Fruit Extract, Sodium Benzoate, Potassium Sorbate)

PINEAPPLE EXTRACT H.GL. - M.S is produced from the fruit of Ananas sativus.

The moisturising activity of pineapple is due to its carbohydrates and  $\alpha$ -hydroxyacids (AHA) content. The exfoliating activity of pineapple is due to AHA that acts at the stratum corneum level. They act on the cohesion between corneocytes in the deepest layers, so that they make the stratum corneum thinner and improve skin flexibility.

The collagen synthesis stimulating activity gives vitamin C wound-healing properties useful to treat injuries from trauma, skin burn or surgery. It is also beneficial for new tissue formation.

The cosmetic applications for Pineapple Extract are moisturising and emollient products, anti-ageing exfoliating and firming products, and hair colour and photo-protection products.

Recommended usage level: 0.5-5%

## Pixalia®

(INCI: Propanediol, Water, Cleome gynandra Leaf Extract)

Cleome gynandra is a plant known for its high level of polyphenols and particularly flavonoids, which are molecules with significant antioxidant and anti-inflammatory properties.

Pixalia® is an extract rich in polyphenols, obtained exclusively from the dried leaves of Cleome gynandra, using an extraction process that protects both people and the environment, patented by Laboratoires Expanscience. This eco-designed active ingredient is responsibly sourced from Burkina Faso.

Pixalia® rebalances skin microbiota, regulates C.acnes phylotypes, and rebalances sebum balance in quantity and quality by acting on oxidative squalene. In hair it supports a balanced scalp microbiome by targeting Malassezia restricta, one of the main yeasts responsible for dandruff, for a purified scalp. It also inhibits key markers involved in inflammatory response to P. acnes to reduce inflammation.

Recommended usage level: 1 – 3%



## POLYPLANT OILY SKIN GNB

(INCI: Glycerin, Aqua, Nasturtium Officinale Extract, Arctium Majus Root Extract, Salvia Officinalis (Sage) Leaf Extract, Citrus Limon (Lemon) Peel Extract, Hedera Helix (Ivy) Leaf Extract, Saponaria Officinalis Leaf/Root Extract, Fucus Vesiculosus Extract, Sodium Benzoate, Potassium Sorbate)

POLYPLANT OILY SKIN GNB is a complex of vegetable extracts in Glycerin / Water, which contains Seaweed, Great Burdock, Watercress, Ivy, Lemon, Sage and Common Soapwort.

Recommended usage level: 0.5 – 5%

## Premium Avocado Oil

(INCI: Persea Gratissima (Avocado) Oil)

Avocado research has been one of Expanscience's areas of excellence for the past 30 years. This expertise is now illustrated by a number of patents.

Refined and extensively winterised premium avocado oil is obtained from the finest quality avocado pears, responsibly sourced from Mexico, Peru and South Africa using a unique process developed by their pharmaceutical production service. Oil obtained by cold-pressed dehydrated avocado.

This emollient, provides a velvet touch whilst nourishing, softening and protecting the skin. Premium Avocado oil has been shown to reinforce the skin's hydrolipidic film, decrease TEWL and has an anti-inflammatory benefit. When used on hair, it provides shine and nourishment.

Recommended usage level: 0 – 100%

## POMEGRANATE EXTRACT H.GL. - M.S

(INCI: Glycerin, Aqua, Punica Granatum Fruit Extract, Sodium Benzoate, Potassium Sorbate)

POMEGRANATE EXTRACT H.GL. - M.S is a water-soluble extract with astringent and sebum regulating properties. It soothes and provides an anti-inflammatory effect. Ideal for sensitive skin, anti-dandruff, antioxidant, photoprotection, anti-ageing, hair colour protection products.

Recommended usage level: 0.5-5%

## PROVENCE CRYSTAL

(INCI: Sea Salt (Maris Sal))

Rich in minerals such as, calcium, sodium, magnesium and potassium, this thick layer of sea salt provides exfoliation for a soothing effect and skin homeostasis.

Recommended usage level: 1 - 80%

## PUREBLOME™

(INCI: Aqua, Propanediol, Glycerin, Bacillus Ferment, Pentyleneglycol, Levulinic Acid, Glyceryl Caprylate)

PUREBLOME™ redefines skincare for women in their blooming years.

This second ecosystem ingredient developed through the endophyte-based platform Triplobiome™ Technology, transfers the essence of this natural symbiosis directly to the skin. PUREBLOME™ is a post-biotic ingredient derived from an endophytic bacterium found in hyssop. It purifies the skin and addresses the broad challenges of mature women with a triple efficacy approach that combines anti-acne and well-ageing benefits.

A holistic blend of psychological balance, physical renewal and sustainable production that offers modern mature women a way to reconnect with nature's wisdom for balance and rejuvenation.

Recommended usage level: 2%

## QUILLAJA EXTRACT H.GL. - M.S.

(INCI: Glycerin, Aqua, Quillaja Saponaria Bark Extract, Sodium Benzoate, Potassium Sorbate)

Water-soluble extract with seoregulating, anti-hair loss, antimicrobial, purifying and antiseptic properties.

Recommended usage level: 0.5-5.0%

## PURESKIN NNSN

(INCI: PEG-30 Castor Oil, Sulfur)

PURESKIN NNSN is a biosulphur fluid. Sebum regulation for oily skin.

The topical sulphur is used to treat acne. Thanks to its antifungal and antibacterial activity, it can help to reduce excess sebum and soothe redness and inflammation, as well as helping to clean the pores and prevent the spread of pimples and blackheads.

Suitable for hair care, antifungal, purifying and antiseptic applications.

Recommended usage level: 0.5-2%

## RED CLOVER EXTRACT H.GL. - M.S

(INCI: Glycerin, Aqua, Trifolium Pratense (Clover) Extract, Potassium Sorbate, Sodium Benzoate)

RED CLOVER EXTRACT H.GL. - M.S. is a water-soluble extract ideal for anti-ageing, mature skin, firming, antioxidant, photoprotection, anti-alopecia and seoregulating.

Recommended usage level: 0.5 – 5%

## Rhassoul Clay

(INCI: Moroccan lava clay)

Rhassoul is a Moroccan lava clay, part of the Hammam rituals and is used in both skin and hair care. Unlike soap, Rhassoul cleanses without surfactant by naturally absorbing grease, sebum and impurities to purify the skin and hair.

Rhassoul Clay is ideal for formulating solid and powder cosmetic products such as, powdered face masks, cleansing pastes, powder cleansers, lotions, body wraps, scrubs, powdered shower gels, solid soap, shampoo bars, dry shampoo and hair masks.

Recommended usage level: 1-40%

## Rosehip Cellular Extract

(INCI: Rosa canina Fruit Extract)

Delivering "true to nature" hydrophilic plant profiles. Cellular Extraction harnesses the species' water-soluble blueprint of phyto-compounds and their derivatives (the entourage), in their synergistic relationships, as they exist in the cell.

Extracted rapidly under high pressure, NATIVE EXTRACTS maintain the molecules' natural integrity.

Committed to conscious manufacturing, Cellular Extracts are created using purified, deionised, rain-harvested water and less plant material than past processes to produce a natural True to Nature plant extract, that is water-wise, repurposes waste, traceable to source, transparent in composition.

Rosehip extract is rich in vitamins A and C, which rejuvenate the skin, reduce scars and fine lines, and promote a radiant, even complexion. For hair, its essential fatty acids deeply nourish the scalp, strengthen strands, and enhance overall shine and softness.

Recommended usage level: 0.5 – 1% concentrate; 1 – 5% dilution

## Rice MicroPlant 25

(INCI: Oyza sativia powder)

Rice MicroPlant 25 is a multifunctional ingredient used as a mattifying agent, texturiser, bulking agent, to provide softness and as an alternative to titanium. Thanks to its starchy composition, Rice MicroPlant 25 brings a texturising effect to the product and extreme softness to the final product.

It improves adhesion to the skin leaving a soft and silky touch. It is useful to formulate cosmetic products solid and powder such as mask, powder or solid cleanser, solid shampoo.

Recommended usage level: 1 - 100%

## SAGE EXTRACT H.GL. - M.S

(INCI: Glycerin, Aqua, Salvia Officinalis (Sage) Leaf Extract, Potassium Sorbate, Sodium Benzoate)

SAGE EXTRACT H.GL. - M.S. is an extract in Glycerin/ water from the leaves of "Salvia officinalis L."

Sage Extract demonstrates antimicrobial activity, antioxidant activity, anti-secretory, anti-perspirant activity, anti-inflammatory activity, activity on hair and astringent activity. The antimicrobial activity is mainly due to the thujones in the essential oil. Externally applied thujones seem to have antihydrotic activity, since they block the nerve terminals in sweat glands.

Sage leaves also have a well-known antioxidant activity based on their phenolic compounds content.

SAGE EXTRACT H.GL. - M.S. is ideal for formulating tonics, deodorants, purifying, reactivating, anti-perspirant and anti-dandruff products up to 1% dry extract and up to 5% glycolic and fluid extracts when used in stimulating and purifying hair lotions, toothpastes, greasy and opaque skin products, deodorants and anti-perspirants. It can be used at up to 10% in bath and shower gel and shampoo.

Recommended usage level: 0.5-5%

## Salt Bush Cellular Extract

(INCI: Atriplex Nummularia)

Delivering “true to nature” hydrophilic plant profiles. Cellular Extraction harnesses the species’ water-soluble blueprint of phyto-compounds and their derivatives (the entourage), in their synergistic relationships, as they exist in the cell. Extracted rapidly under high pressure, NATIVE EXTRACTS maintain the molecules’ natural integrity.

Committed to conscious manufacturing, Cellular Extracts are created using purified, deionised, rain-harvested water and less plant material than past processes to produce a natural True to Nature plant extract, that is water-wise, repurposes waste, traceable to source, transparent in composition.

Ideal for acne and problematic skin as historically the leaves were medicinal, often added to water as skin cleansers for sores, burns, and wounds.

Recommended usage level: 0.5 – 1% concentrate; 1 – 5% dilution

## Sea Fennel Cellular Extract

(INCI: Crithmum maritimum Extract)

Delivering “true to nature” hydrophilic plant profiles. Cellular Extraction harnesses the species’ water-soluble blueprint of phyto-compounds and their derivatives (the entourage), in their synergistic relationships, as they exist in the cell.

Extracted rapidly under high pressure, NATIVE EXTRACTS maintain the molecules’ natural integrity.

Committed to conscious manufacturing, Cellular Extracts are created using purified, deionised, rain-harvested water and less plant material than past processes to produce a natural True to Nature plant extract, that is water-wise, repurposes waste, traceable to source, transparent in composition.

Sea fennel extract is rich in antioxidants and minerals, which help protect the skin from environmental damage and promote a healthy, youthful complexion. Its hydrating and soothing properties support skin regeneration, improve elasticity, and reduce the appearance of fine lines and wrinkles.

Recommended usage level: 0.5 – 1% concentrate; 1 – 5% dilution

## Snake Vine Cellular Extract

(INCI: Hibbertia Scandens Leaf Extract)

Delivering “true to nature” hydrophilic plant profiles. Cellular Extraction harnesses the species’ water-soluble blueprint of phyto-compounds and their derivatives (the entourage), in their synergistic relationships, as they exist in the cell. Extracted rapidly under high pressure, NATIVE EXTRACTS maintain the molecules’ natural integrity.

Committed to conscious manufacturing, Cellular Extracts are created using purified, deionised, rain-harvested water and less plant material than past processes to produce a natural True to Nature plant extract, that is water-wise, repurposes waste, traceable to source, transparent in composition. The plant historically formed a paste to ease the pain of arthritis and other inflammatory conditions.

The sap was widely used as an antiseptic. Now, it is predicted to be a major player in natural cosmetics for its composition of phyto-compounds that can be considered for their antioxidant, anti-inflammatory, and skin-illuminating capacity.

Recommended usage level: 0.5 – 1% concentrate; 1 – 5% dilution.

## Starfruit Cellular Extract

(INCI: Averrhoa carambola Fruit Extract)

Delivering “true to nature” hydrophilic plant profiles. Cellular Extraction harnesses the species’ water-soluble blueprint of phyto-compounds and their derivatives (the entourage), in their synergistic relationships, as they exist in the cell.

Extracted rapidly under high pressure, NATIVE EXTRACTS maintain the molecules’ natural integrity.

Committed to conscious manufacturing, Cellular Extracts are created using purified, deionised, rain-harvested water and less plant material than past processes to produce a natural True to Nature plant extract, that is water-wise, repurposes waste, traceable to source, transparent in composition.

Starfruit extract is rich in antioxidants and vitamin C, which brighten the skin, reduce dark spots, and combat signs of aging. Its natural hydrating properties improve skin texture and leave it smooth, refreshed, and radiant.

Recommended usage level: 0.5 – 1% concentrate; 1 – 5% dilution

## SPRING SNOW™

(INCI: Glycerin, Aqua, Hydrolyzed Prunus Domestica)

Spring Snow™ is derived from the white flowers of wild prunus Prunus domestica and targets the “skin-brain” axis. It acts as neuro-soother and anti-dark spot shield.

Spring Snow™ breaks the vicious cycle of barrier defects, neurogenic inflammation and oxidative stress induced by exposome factors by reinforcing the barrier function in stressful situations, enhancing hydration, limiting the hypersensitivity of nerve fibers and neurogenic inflammation, relieves and soothes the skin against the deleterious effects of pollutants, whilst preventing the oxidation and browning of melanin induced by stressors including pollution and is responsible for the appearance of dark spots.

Skin recovery is accelerated and soothed for a brighter more even complexion. Skin comfort and improvement of the complexion reinforces well-being.

Recommended usage level: 1-3%

## Strawberry Gum Cellular Extract

(INCI: Eucalyptus Olida Leaf Extract)

Delivering “true to nature” hydrophilic plant profiles. Cellular Extraction harnesses the species’ water-soluble blueprint of phyto-compounds and their derivatives (the entourage), in their synergistic relationships, as they exist in the cell. Extracted rapidly under high pressure, NATIVE EXTRACTS maintain the molecules’ natural integrity.

Committed to conscious manufacturing, Cellular Extracts are created using purified, deionised, rain-harvested water and less plant material than past processes to produce a natural True to Nature plant extract, that is water-wise, repurposes waste, traceable to source, transparent in composition.

Suitable for de-pigmentation and redness reduction this anti-inflammatory active provides brighter and happier skin.

Recommended usage level: 0.5 – 1% concentrate; 1 – 5% dilution

## Sweetone® Bio

(INCI: Schisandra Sphenanthera Fruit Extract, Maltodextrin)

Schisandra sphenanthera is a creeper whose berries are widely used in traditional Eastern, and particularly Chinese, medicine.

Sweetone® Bio is a concentrate of active molecules extracted from Schisandra Sphenanthera berries by a bio-enzymatic process that protects both people and the environment, patented by Laboratoires Expanscience. This active ingredient from biotechnological process is sourced from the central region of China.

Sweetone® Bio reduces redness by controlling specific vascular and neurogenic inflammation. Skin tone is unified and the synthesis of melanin is reduced, limiting its spread through the epidermis.

Recommended usage level: 0.1 – 0.5%

## Tasmanian Blue Gum Cellular Extract

(INCI: Eucalyptus Globulus Leaf Extract)

Delivering “true to nature” hydrophilic plant profiles. Cellular Extraction harnesses the species’ water-soluble blueprint of phyto-compounds and their derivatives (the entourage), in their synergistic relationships, as they exist in the cell. Extracted rapidly under high pressure, NATIVE EXTRACTS maintain the molecules’ natural integrity.

Committed to conscious manufacturing, Cellular Extracts are created using purified, deionised, rain-harvested water and less plant material than past processes to produce a natural True to Nature plant extract, that is water-wise, repurposes waste, traceable to source, transparent in composition.

Tasmania Blue Gum is most widely found in the open forests of Tasmania and southern Victoria, Eucalyptus globulus has evolved over millions of years and is a unique Australian ‘pioneer species’ commonly known as “southern blue gum”. It has the ability to create and store an abundance of powerful phyto-compounds.

The NE Tasmanian Blue Gum Cellular Extract delivers natural molecules in a water-soluble format, including phloroglucinol, quercetin, ellagic and gallic acid, phenolics and more. These powerful phyto-compounds make Tasmanian Blue Gum ideal for skin radiance and luminosity, hair products, premature ageing, anti-glycation, collagen and elastin support, and blemished and reactive skin.

Recommended usage level: 0.5 – 1% concentrate; 1 – 5% dilution



## Tasmanian Lavender Cellular Extract

(INCI: Lavendula angustifolia Flower Extract)

Owing to to Tasmania's unique climate and nutrient rich soils, the Lavender grown there is known for its most delightful aroma. A traditional botanical, highly regarded throughout the hair and skin care industry, it is commonly used in fragrances and shampoo.

Beyond the volatile scent compounds, this species has even more to offer through its water-soluble phyto-compounds, which may be considered for their antioxidant, anti-inflammatory, antimicrobial, age lines and premature aging benefits.

The NE Tasmanian Lavender Cellular Extract delivers the natural molecules this botanical species can offer in a water-soluble format, including phenolics, anthocyanins, apigenin and more.

Recommended usage level: 0.5 – 1% concentrate; 1 – 5% dilution

## TRIKENOL™ PLUS

(INCI: Methylpropanediol, 4-Terpineol, Salicylic Acid, Salix Alba (Willow) Bark Extract)

Iconic microbiome regulator that mattifies and rebalances the microbiota to reduce imperfections.

It works by inhibiting the growth of dysbiotic microorganisms and cyclooxygenase (COX), responsible for the synthesis of inflammatory mediators.

TRIKENOL™ PLUS can be used in the formulation of cosmetic products for the treatment of acne-prone oily skin at different doses depending on the desired effect or activity.

Recommended usage level: 0.8%

## Tea Tree Cellular Extract

(INCI: Melaleuca Alternifolia Leaf Extract)

Delivering “true to nature” hydrophilic plant profiles. Cellular Extraction harnesses the species’ water-soluble blueprint of phyto-compounds and their derivatives (the entourage), in their synergistic relationships, as they exist in the cell. Extracted rapidly under high pressure, NATIVE EXTRACTS maintain the molecules’ natural integrity.

Committed to conscious manufacturing, Cellular Extracts are created using purified, deionised, rain-harvested water and less plant material than past processes to produce a natural True to Nature plant extract, that is water-wise, repurposes waste, traceable to source, transparent in composition.

A natural anti-bacterial perfect for blemish prone skin.

Recommended usage level: 0.5 – 1% concentrate; 1 – 5% dilution

## Tulsi Cellular Extract

(INCI: Ocimum sanctum Extract)

Delivering “true to nature” hydrophilic plant profiles. Cellular Extraction harnesses the species’ water-soluble blueprint of phyto-compounds and their derivatives (the entourage), in their synergistic relationships, as they exist in the cell.

Extracted rapidly under high pressure, NATIVE EXTRACTS maintain the molecules’ natural integrity.

Committed to conscious manufacturing, Cellular Extracts are created using purified, deionised, rain-harvested water and less plant material than past processes to produce a natural True to Nature plant extract, that is water-wise, repurposes waste, traceable to source, transparent in composition.

Tulsi extract, known for its anti-inflammatory and antibacterial properties, helps reduce acne, redness, and irritation while promoting clearer skin. Its high antioxidant content also protects against environmental damage, improving skin tone and enhancing a healthy, glowing complexion.

Recommended usage level: 0.5 – 1% concentrate; 1 – 5% dilution

## Vegan CDS Glycolic

(INCI: Aqua, Mannitol, Phosphatidylcholine, Glycerin, Glycolic Acid, Decyl Glucoside, Cetyl Alcohol, Potassium Sorbate, Sodium Benzoate, Ceramide NP (Ceramide 3), Xanthan Gum, Sodium Chloride)

Glycolic acid is the most popular of the Alpha hydroxyl acids (AHAs) or fruit acids and it is characterised by its very low molecular weight which enables it to penetrate the deeper skin levels.

In low concentrations it has hydrating properties. In higher concentrations it is a powerful exfoliator which dissolves the lipids that attach to dead cells facilitating their release and thereby stimulating the cell renewal cycle. For this reason, it is indicated for anti-aging treatment and as an adjuvant treatment for dyschromias and acne.

The delivery system maintains the Glycolic acid at a low pH level until the point of delivery and enables formulation at any pH without the risk of the acid dissociating. A smaller dose of acid is required to obtain the same amount of non-dissociated acid in the stratum corneum therefore reducing irritation.

Recommended usage level: 1-10%

## Vegan CDS Lactic

(INCI: Aqua, Mannitol, Phosphatidylcholine, Glycerin, Lactic Acid, Decyl Glucoside, Cetyl Alcohol, Potassium Sorbate, Sodium Benzoate, Ceramide NP (Ceramide 3), Xanthan Gum, Sodium Chloride)

Lactic acid is an Alpha hydroxyl acid (AHA) produced by the fermentation of certain foodstuffs such as milk. It is one of the most skin-sensitive AHAs which enables it be used on dry and/or moderately sensitive skins.

In low concentrations it has hydrating properties. In higher concentrations it is a powerful exfoliator which dissolves the lipids that attach to dead cells and facilitates their release, thereby stimulating the cell renewal cycle. It is indicated for the treatment of sun produced skin blemishes and for skin tone and texture improvement. It also has important skin moisturising properties.

The benefits of the encapsulation system enable the Lactic acid to be maintained at a low pH level until the point of delivery. Allows formulations at any pH level without the encapsulated acid dissociating. Selective delivery of the active ingredient in the stratum corneum to ensure a higher concentration at that level and the avoidance of skin penetration, thereby reducing irritation.

Recommended usage level: 1-10%

## Vegan CDS Mandelic

(INCI: Aqua, Mannitol, Phosphatidylcholine, Glycerin, Mandelic Acid, Polyglyceryl-10 Laurate, Cetyl Alcohol, Potassium Sorbate, Sodium Benzoate, Ceramide NP (Ceramide 3), Xanthan Gum, Sodium Chloride)

AHA derived from Almonds. It has twice the molecular weight of glycolic acid and consequently is less skin penetrative and causes less irritation. It is apt for use on moderately sensitive skins and accelerates the renewal of the stratum corneum.

Encapsulation into the nanovesicles maintains the Mandelic acid at a low pH level until the point of delivery. It facilitates formulations at any pH level without the encapsulated acid dissociating. Smaller dose of acid is required to obtain the same amount of non-dissociated acid in the stratum corneum.

Selective delivery of the active ingredient in the stratum corneum to ensure a higher concentration at that level. The gradual delivery of the acid ensures a more sustainable skin renewal action.

Recommended usage level: 1-10%

## Vegan DDS Enoxolone

(INCI: Aqua, Mannitol, Phosphatidylcholine, Glycerin, Polyglyceryl-10 Laurate, Cetyl Alcohol, Sodium Benzoate, Potassium Sorbate, Glycyrrhetic Acid, Xanthan Gum)

Enoxolone, derived from licorice root, is extensively used in Chinese natural medicine for its anti-inflammatory, antioxidant, and antimicrobial properties. It inhibits the enzyme 11-hydroxysteroid dehydrogenase, reducing inflammation and offering benefits like preventing DNA fragmentation, itchiness in dermatitis and promoting skin tone evenness.

Enoxolone is a superior alternative to hydrocortisone for treating conditions such as, eczema, dermatitis, psoriasis, acne, sunburn, and hyperpigmentation. Encapsulated within DDS (Deep Delivery System), which is composed of mainly phospholipids and membrane stabilisers, it contains the right amount of penetration enhancers and edge activators that help the system reach the desired cells for maximum efficacy. Once there, Enoxolone helps soothe and calm irritated skin, reduces the appearance of age spots and protects the skin from free radical damage whilst moisturising the skin making it softer and smoother.

Recommended usage level: 1-10%

## Vegan CDS Piroctone

(INCI: Aqua, Mannitol, Phosphatidylcholine, Glycerin, Piroctone Olamine, Cetyl Alcohol, Potassium Sorbate, Sodium Benzoate, Ceramide NP, Citric Acid, Sodium Chloride)

Piroctone controls excess skin desquamation, normalises the skin renewal cycle, provides an antibacterial and antifungal action, reduces body odour and excess oil on the skin, whilst increasing the average thickness of the hair shaft. INdermal's Corneum Delivery System (CDS) encapsulates the Piroctone Olamine protecting it against degradation. CDS selectively releases the active ingredient in the stratum corneum for higher concentrations and a progressive release for a long-lasting effect. The encapsulated technology also increases the bioavailability of the active ingredient providing up to 15 times greater concentration than other standard liposome products.

Recommended usage level: 1-10%

## Vegan DDS Niacinamide

(INCI: Aqua, Mannitol, Phosphatidylcholine, Glycerin, Niacinamide, Cetyl Alcohol, Potassium Benzoate, Sodium Benzoate, Xanthan Gum, Citric Acid, Sodium Chloride)

Niacinamide is a version of Vitamin B3 and is well known for its positive effect on skin health such as, brightness, hydration, pore and wrinkle reduction as well as fighting inflammation. While Niacinamide is very stable it can break down when it is in extreme acid or alkaline environments. The Vegan DDS delivery system not only provides protection, it also enables up to twelve times the amount of active ingredient to reach the interior of the skin compared to when applied freely.

Recommended usage level: 1-10

## Vegan DDS Pure Retinal

(INCI: Aqua, Phosphatidylcholine, Pentyleneglycol, Mannitol, Glycerin, Polyglyceryl-10 Laurate, Retinal, Cetyl Alcohol, Tocopherol)

Retinal stimulates the production of hyaluronic acid, collagen and elastin, improving skin strength and elasticity. It accelerates the skin cell renewal process, improving the overall appearance and texture of the skin and minimising pores. It also boasts greater antibacterial action than other retinoids which makes it especially effective in the treatment of acne. The encapsulated DDS delivery system protects the Retinal against degradation and colour change of the finished formulation. Maximum delivery of the active ingredient to the deep skin levels is provided gradually for a longer lasting effect.

Recommended usage level: 1-10%

## Vegan DDS Retinol

(INCI: Aqua, Mannitol, Phosphatidylcholine, Glycerin, Retinyl Palmitate, Cetyl Alcohol, Potassium Sorbate, Sodium Benzoate, Decyl Glucoside, Lauryl Glucoside, Xanthan Gum, Sodium Chloride)

Retinyl Palmitate is an ester of vitamin A and is one of the most reliable ways to provide the skin with vitamin A. On delivery to the deep skin levels, Retinyl converts to Retinol (Vitamin A) which in turn converts to Retinal (Retinaldehyde), before finally converting to Retinoic Acid.

Its ability to stimulate the production of hyaluronic acid, collagen and elastin is why it is considered one of the most potent anti-aging active ingredients. It also accelerates the cell regeneration process, improving the general appearance and texture of the skin and minimising the pore size. For this reason, together with its ability to regulate sebum production, it is commonly found in acne treatment products.

Furthermore, it represses the production of melanin thereby reducing the number and intensity of skin blemishes. Retinyl Palmitate is encapsulated in the Deep Delivery System (DDS) where it is specifically delivered to the deepest strata of the epidermis for a more intense and precise effect on the structures and cells located there. The use of DDS enables up to twelve times the amount of active ingredient to reach the interior of the skin compared to when applied freely.

Recommended usage level: 1 - 10%

## Vegan DDS Tranexamic

(INCI: Aqua, Mannitol, Phosphatidylcholine, Glycerin, Tranexamic Acid, Cetyl Alcohol, Decyl Glucoside, Potassium Sorbate, Sodium Benzoate, Niacinamide, Xanthan Gum, Sodium Chloride)

Tranexamic Acid is a widely known molecule in medicine which is normally used as an antifibrinolytic owing to its ability to inhibit plasmin. This same property is used in cosmetics to reduce pigmentations since plasmin is involved with melanogenesis. Furthermore, Tranexamic Acid acts on keratinocytes which contain melanin, interrupting the inflammatory process that produces blemishing following external aggressions or injuries such as acne.

Finally, it also reduces increased vascularisation which always accompanies a recurrent hyperpigmentation such as melasma. These three modes of action of Tranexamic Acid, together with the ability of Niacinamide (Vit.B3) to inhibit the transfer of melanosomes and protect the DNA from UV damage, provide a potent treatment for all types of blemishes. It is particularly effective in the treatment of photo induced pigmentations such as, Melasma and Liver spots.

Encapsulated within INdermal's Deep Delivery System (DDS) it enables the Tranexamic Acid to be delivered to the deepest strata of the epidermis for a more intense and precise effect on the structures and cells located there. The use of DDS enables up to twelve times the amount of active ingredient to reach the interior of the skin compared to when applied freely

Recommended usage level: 1 - 10%

## Vegan DDS True Retinol

(INCI: Aqua, Phosphatidylcholine, Pentylene Glycol, Polyglycerul-10 Laurate, Glycerin, Retinol, Cetyl Alcohol, Tocopherol Acetate)

Retinol is the best and most demanded anti-ageing active. It increases skin cell production, helping to exfoliate your skin and increase collagen production. This helps to reduce the appearance of fine lines and wrinkles and, also helps to prevent clogged pores. All these characteristics make Retinol a very useful active ingredient to treat acne, scars caused by acne, melasma spots or wrinkles and expression lines.

Vegan DDS True Retinol contains Pure Retinol without BHT and BHA, only tocopherol acetate as an antioxidant. Encapsulated in the Deep Delivery system, retinol is delivered specifically into the deepest strata of the epidermis for a more intense and precise effect on the structures and cells located there. The use of these deep delivery systems enables up to twelve times the amount of active ingredient to reach the interior of the skin compared to when applied freely.

Recommended usage level: 1 - 10%

## Vegan FDS Zinc PCA

(INCI: Aqua, Mannitol, Phosphatidylcholine, Glycerin, Zinc PCA, Cetyl Alcohol, Sodium Benzoate, Sorbitan Oleate, Polysorbate 80, Xanthan Gum, Stearamine, Sodium Chloride, Dimyristoyl Phosphatidylcholine)

Zinc PCA is the zinc salt of the L-PCA (pyrrolidine carboxylic acid) a doubly active complex that provides the skin and hair with the beneficial effects of the zinc and L-PCA.

Zinc is involved not only in the synthesis of the nucleic acids, including the DNA, but also in the synthesis of proteins, cell division and in the structure and coenzymatic activation of many key molecules in the body and the skin. It also prevents the development of microbial infections thanks to its considerable antiseptic properties.

It has been shown that zinc reduces sebum secretion by inhibiting the 5  $\alpha$ - reductase. When joining L-PCA to an active molecule such as zinc, it becomes a physiological vector which optimises its bioavailability and in addition acts as a signalling molecule to stimulate the epidermal differentiation and strengthen the skin barrier function.

Recommended usage level: 1 - 10%

## Vitamin C Trio Cellular Extract

(INCI: Terminalia ferdinandiana Fruit Extract, Citrus glauca Fruit Extract, Citrus australasica Fruit Extract)

Delivering “true to nature” hydrophilic plant profiles. Cellular Extraction harnesses the species’ water-soluble blueprint of phyto-compounds and their derivatives (the entourage), in their synergistic relationships, as they exist in the cell.

Extracted rapidly under high pressure, NATIVE EXTRACTS maintain the molecules’ natural integrity.

Committed to conscious manufacturing, Cellular Extracts are created using purified, deionised, rain-harvested water and less plant material than past processes to produce a natural True to Nature plant extract, that is water-wise, repurposes waste, traceable to source, transparent in composition.

The NE Vitamin C Trio Blend Cellular Extract represents unique combinations of the water-soluble phytocompounds extracted from Desert Lime, Finger Lime Caviar and Kakadu Plum.

With over 16 exciting natural compounds combined, this blend offers a source of natural vitamin C predominately from the Kakadu Plum (considered the species with the highest source of natural vitamin C (biological ascorbic acid)).

Recommended usage level: Concentrate: 1.0 - 2.0%, Standard 1:10, Wash on/off 3.0 - 6.0%

## Waratah Cellular Extract

(INCI: Telopea Speciosissima Flower/Leaf Extract)

Delivering “true to nature” hydrophilic plant profiles. Cellular Extraction harnesses the species’ water-soluble blueprint of phyto-compounds and their derivatives (the entourage), in their synergistic relationships, as they exist in the cell. Extracted rapidly under high pressure, NATIVE EXTRACTS maintain the molecules’ natural integrity.

Committed to conscious manufacturing, Cellular Extracts are created using purified, deionised, rain-harvested water and less plant material than past processes to produce a natural True to Nature plant extract, that is water-wise, repurposes waste, traceable to source, transparent in composition.

Used by indigenous people as a medical tonic for centuries, the phyto-compounds, can be considered for firming and toning skin as well as numerous skin conditions, including reactive skin, fine lines and wrinkles.

Recommended usage level: 0.5 – 1% concentrate; 1 – 5% dilution.

## White Clay

(INCI: Kaolin)

White clay is very effective for fragile and dry skin thanks to its adsorbing, purifying, cleansing, absorbing and mattifying, repairing and soothing properties. White clay can be used in toothpastes as a thickener and/ or as mild abrasive.

Recommended usage level: 1 - 40%

## Wattleseed Cellular Extract

(INCI: Acacia Victoriae Seed Extract)

Delivering “true to nature” hydrophilic plant profiles. Cellular Extraction harnesses the species’ water-soluble blueprint of phyto-compounds and their derivatives (the entourage), in their synergistic relationships, as they exist in the cell. Extracted rapidly under high pressure, NATIVE EXTRACTS maintain the molecules’ natural integrity.

Committed to conscious manufacturing, Cellular Extracts are created using purified, deionised, rain-harvested water and less plant material than past processes to produce a natural True to Nature plant extract, that is water-wise, repurposes waste, traceable to source, transparent in composition.

Medicinally, infusions and smoke treatments were widely used for headaches, skin complaints, aches and pains, infections and toothache. Now, its uses in blemish and problematic skin allow a unique story for your formulation.

Recommended usage level: 0.5 – 1% concentrate; 1 – 5% dilution

## WHITE NETTLE EXTRACT M.S

(INCI: Propylene glycol, Aqua, Lamium Album Extract, Sodium Benzoate, Potassium Sorbate)

WHITE NETTLE EXTRACT M.S is a water-soluble extract providing astringent, purifying, antiseptic, moisturising, soothing and sebum secretion regulation properties.

Recommended usage level: 0.5 – 5%



## Willow Herb Cellular Extract

(INCI: Epilobium angustifolium Leaf Extract)

Delivering “true to nature” hydrophilic plant profiles. Cellular Extraction harnesses the species’ water-soluble blueprint of phyto-compounds and their derivatives (the entourage), in their synergistic relationships, as they exist in the cell. Extracted rapidly under high pressure, NATIVE EXTRACTS maintain the molecules’ natural integrity.

Committed to conscious manufacturing, Cellular Extracts are created using purified, deionised, rain-harvested water and less plant material than past processes to produce a natural True to Nature plant extract, that is water-wise, repurposes waste, traceable to source, transparent in composition.

The unique anti-inflammatory and antioxidant synergy found in this extract make it an integral ingredient for a wide range of superior topical applications. Provides fast relief from skin irritations.

Recommended usage level: 0.5 – 1% concentrate; 1 – 5% dilution

## YUCCA EXTRACT H.GL. - M.S

(INCI: Aqua, Glycerin, Yucca Filamentosa Extract, Potassium Sorbate, Sodium Benzoate)

YUCCA EXTRACT H.GL. - M.S. is a water-soluble extract. Ideal for aged skin, anti-inflammatory, antimicrobial. Purifying and antiseptic products.

Recommended usage level: 0.5 - 5%

# Contact Us

Interested?

Then contact the Infinity team  
for more information:

T: 01344 354 900

E: [technical@infinity-ingredients.co.uk](mailto:technical@infinity-ingredients.co.uk)

W: [infinity-ingredients.co.uk](http://infinity-ingredients.co.uk)